



MILES ESTATE AGENTS

**4 St. Lukes Mews Cotford St. Luke
Taunton TA4 1NT £240,000**



FURTHER PRICE IMPROVEMENT. BEST VALUE 3 BED IN THE VILLAGE An immaculately presented and well maintained 3 bedroom semi detached modern house in this ever popular village 5 miles North West of Taunton within Kingsmead catchment area. Good size living room and kitchen / dining room, pretty low maintenance garden, garage and off road parking. Sensibly priced to attract early interest - viewing highly recommended. Freehold Council Tax Band C EPC : C.





Features:

- Entrance lobby
- Good size sitting room
- Kitchen/dining room
- Cloakroom
- 3 bedrooms
- Bathroom
- Enclosed low maintenance garden
- Single garage with electric door
- Off road parking space
- Freehold
- Council Tax Band C
- EPC : C



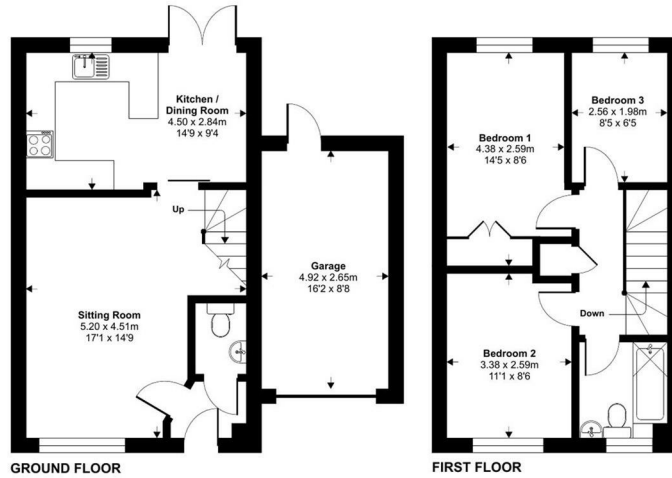
St. Lukes Mews, Cottford St. Luke, Taunton, TA4

Approximate Area = 784 sq ft / 72.8 sq m

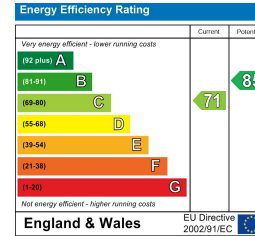
Garage = 140 sq ft / 13 sq m

Total = 924 sq ft / 85.8 sq m

For identification only - Not to scale



Floor plan produced in accordance with RICS Property Measurement 2nd Edition, incorporating International Property Measurement Standards (IPMS Residential). Produced for Miles Alexander Limited T/A Miles Estate Agents. REF: 1261403 © richcom 2025.



Viewings strictly through the selling agents:

Miles Estate Agents

2 Piffin Lane, Bishops Lydeard, Taunton, Somerset, TA4 3AS

Tel: 01823 470 500

lydeard@milesestateagents.co.uk

www.milesestateagents.co.uk



rightmove

OnTheMarket.com

MILES ESTATE AGENTS



BEST

ESTATE AGENT GUIDE
2019 : EXCEPTIONAL

SALES