



**MILES ESTATE AGENTS**

**6 Taunton Road Bishops Lydeard  
Taunton TA4 3LW Guide Price £500,000**





A unique and well presented, extended detached 1930's house with 4 double bedrooms (one on the ground floor currently used as a study) and flexible accommodation set in a generous sized plot in this ever popular Quantock village with its wide range of amenities and within Kingsmead catchment area. 3 reception rooms including fabulous family room with three large skylight windows and bifold doors to enclosed walled garden, lots of parking, car port and workshop - early viewing highly recommended. Freehold Council Tax Band E EPC: E.







## Features:

- Entrance porch
- Hall
- Useful store room
- Utility room
- Kitchen/breakfast room with Rayburn
- Separate dining room
- Fabulous family room with bifold doors
- Sitting room with woodburning stove
- Large study / bedroom 4
- Ground floor bathroom
- 3 double bedrooms
- Shower room
- Enclosed walled garden and 2nd lawned garden to front
- Car port & parking for multiple cars
- Freehold
- Council Tax Band E
- EPC : E

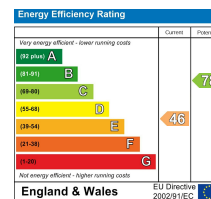
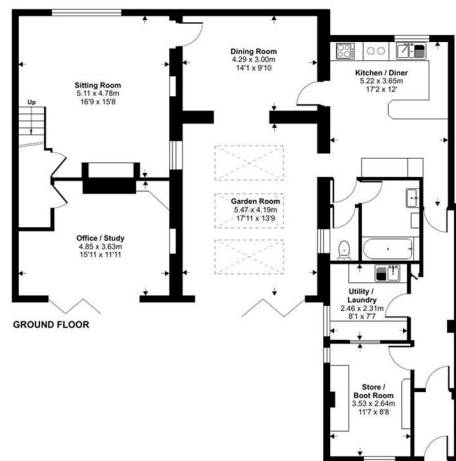




# Taunton Road, Bishops Lydeard, Taunton, TA4

Approximate Area = 2091 sq ft / 194.2 sq m (excludes carport)

For identification only - Not to scale



Floor plan produced in accordance with RICS Property Measurement 2nd Edition, incorporating International Property Measurement Standards (IPMS Residential). Produced for Miles Alexander Limited T/A Miles Estate Agents. REF: 1306404. ©richcom 2025.



Viewings strictly through the selling agents:

**Miles Estate Agents**

2 Piffin Lane, Bishops Lydeard, Taunton, Somerset, TA4 3AS

**Tel: 01823 470 500**

[lydeard@milesestateagents.co.uk](mailto:lydeard@milesestateagents.co.uk)

[www.milesestateagents.co.uk](http://www.milesestateagents.co.uk)



**rightmove**

**OnTheMarket.com**

**MILES ESTATE AGENTS**

**BEST**  
ESTATE AGENT GUIDE  
2019 : EXCEPTIONAL  
SALES