



MILES ESTATE AGENTS

**9 Four Acre Mead Bishops Lydeard
Taunton TA4 3NW £299,950**



PRICE IMPROVEMENTA
good size extended 2 bedroom
detached bungalow with lovely
enclosed garden close to the extensive
amenities of this ever popular
Quantock village north west of
Taunton. Spacious living/dining room,
conservatory, garage and off road
parking - immediately available with
NO ONWARD CHAIN. Early
viewing highly recommended.
Freehold Council Tax Band D EPC:
D.





Features:

- Entrance hall
- Spacious living/dining room
- Conservatory extension
- Kitchen
- 2 good size bedrooms
- Bathroom
- Lovely enclosed garden
- Summerhouse & garden shed
- Single garage & off road parking
- NO ONWARD CHAIN
- Freehold
- Council Tax Band D
- EPC : D



Four Acre Mead, Bishops Lydeard, Taunton, TA4

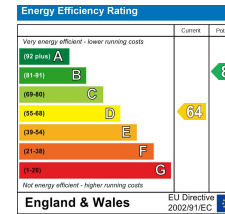
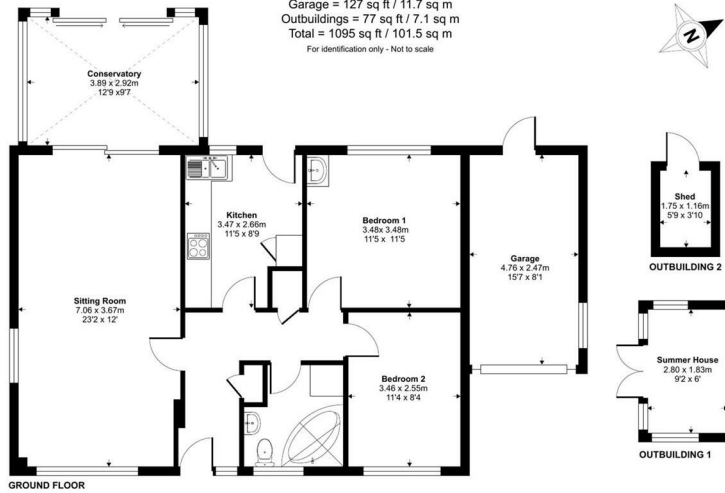
Approximate Area = 891 sq ft / 82.7 sq m

Garage = 127 sq ft / 11.7 sq m

Outbuildings = 77 sq ft / 7.1 sq m

Total = 1095 sq ft / 101.5 sq m

For identification only - Not to scale



Floor plan produced in accordance with RICS Property Measurement 2nd Edition, incorporating International Property Measurement Standards (IPMS2 Residential). © richcom 2024. Produced for Miles Alexander Limited T/A Miles Estate Agents. REF: 1209002



Viewings strictly through the selling agents:

Miles Estate Agents

2 Piffin Lane, Bishops Lydeard, Taunton, Somerset, TA4 3AS

Tel: 01823 470 500

lydeard@milesestateagents.co.uk

www.milesestateagents.co.uk

rightmove

OnTheMarket.com

MILES ESTATE AGENTS

