



MILES ESTATE AGENTS

25 Burge Crescent Cotford St. Luke
Taunton TA4 1NU £270,000



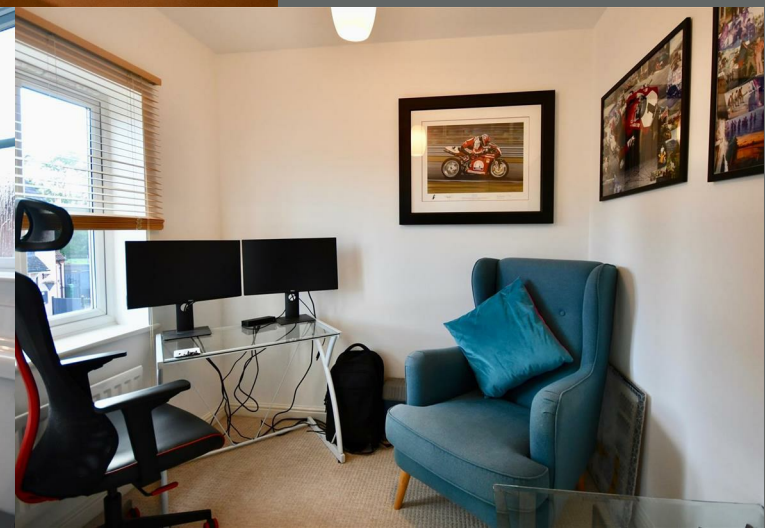
A well presented and generously proportioned modern 3 bedroom end terrace house with spacious sitting room and separate dining room in this ever popular village 5 miles north west of Taunton close to the Quantock Hills in Kingsmead catchment area. Larger than average enclosed garden, garage and parking - early viewing highly recommended and NO ONWARD CHAIN. Freehold Council Tax Band C EPC : C





Features:

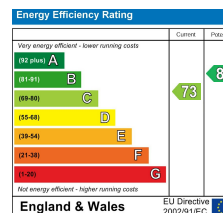
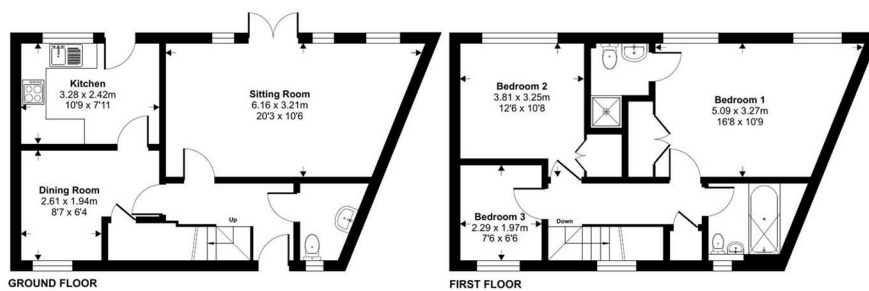
- Entrance hall
- Spacious sitting room
- Separate dining room
- Good size kitchen
- Generous master bedroom with en suite
- 2 further bedrooms
- Family bathroom
- Larger than average enclosed garden
- Single garage & off road parking
- NO ONWARD CHAIN
- Freehold
- Council Tax Band C
- EPC : C



Burge Crescent, Cotford St. Luke, Taunton, TA4

Approximate Area = 974 sq ft / 90.4 sq m

For identification only - Not to scale



Floor plan produced in accordance with RICS Property Measurement Standards incorporating International Property Measurement Standards (IPMS2 Residential). © richcom 2024. Produced for Miles Estate Agents Limited T/A Miles Estate Agents. REF: 1198489



Viewings strictly through the selling agents:

Miles Estate Agents

2 Piffin Lane, Bishops Lydeard, Taunton, Somerset, TA4 3AS

Tel: 01823 470 500

lydeard@milesestateagents.co.uk

www.milesestateagents.co.uk



rightmove

Zoopla.co.uk

onTheMarket.com

MILES ESTATE AGENTS

