



MILES ESTATE AGENTS

**138 Greenway Bishops Lydeard
Taunton TA4 3DB £250,000**



A well presented and spacious 2 double bedroom semi detached house with fabulous large garden on the edge of this ever popular Quantock village with its superb range of amenities. Good size refitted kitchen/dining room and off road parking for 2 cars. Early viewing recommended and NO ONWARD CHAIN. Freehold Council Tax Band B EPC : C





Features:

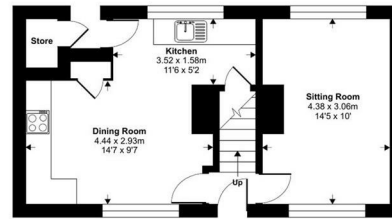
- Entrance lobby
- Sitting room
- Spacious refitted kitchen / dining room
- 2 good size double bedrooms
- Bathroom
- Large enclosed garden
- Off road parking for 2 cars
- NO ONWARD CHAIN
- Freehold
- EPC : C
- Council Tax Band B



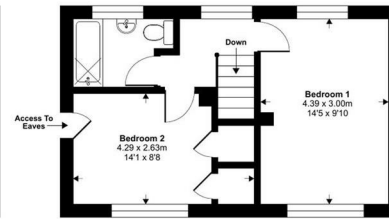
Greenway, Bishops Lydeard, Taunton, TA4

Approximate Area = 755 sq ft / 70.1 sq m

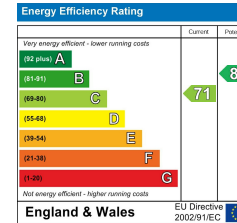
For identification only - Not to scale



GROUND FLOOR



FIRST FLOOR



Floor plan produced in accordance with RICS Property Measurement Standards incorporating International Property Measurement Standards (IPMS) Residential - 6th Edition 2024. Produced for Miles Estate Agents Limited T/A Miles Estate Agents. REF: 1191631



Viewings strictly through the selling agents:

Miles Estate Agents

2 Piffin Lane, Bishops Lydeard, Taunton, Somerset, TA4 3AS

Tel: 01823 470 500

lydeard@milesestateagents.co.uk

www.milesestateagents.co.uk



rightmove

Zoopla.co.uk

onTheMarket.com

MILES ESTATE AGENTS

