



MILES ESTATE AGENTS

24 Venn Close Cotford St. Luke  
Taunton TA4 1JQ



**\*\*\*SUPERB  
VALUE\*\*\*** A well presented modern 3 bedroom semi detached house immediately available with **NO ONWARD CHAIN** in this popular village 5 miles from Taunton close to open countryside and the Quantock Hills. Enclosed low maintenance garden, single garage and off road parking. Early viewing highly recommended. Freehold Council Tax Band C EPC : C.



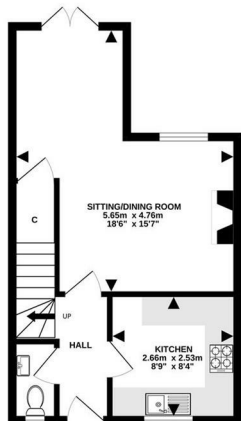


## Features:

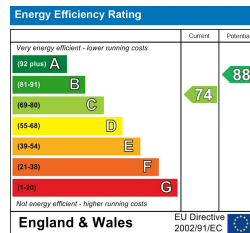
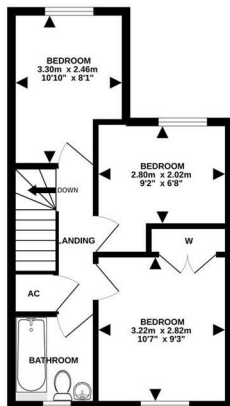
- Entrance Hall
- Lounge/Dining Room
- Kitchen
- Cloakroom
- 3 Bedrooms
- Family Bathroom
- Enclosed Low Maintenance Garden
- Single Garage
- Off Road Parking
- NO ONWARD CHAIN
- Freehold
- Council Tax Band C



GROUND FLOOR  
33.6 sq.m. (302 sq.ft.) approx.



1ST FLOOR  
33.2 sq.m. (357 sq.ft.) approx.



Viewings strictly through the selling agents:

**Miles Estate Agents**

2 Piffin Lane, Bishops Lydeard, Taunton, Somerset, TA4 3AS

Tel: 01823 470 500

lydeard@milesestateagents.co.uk

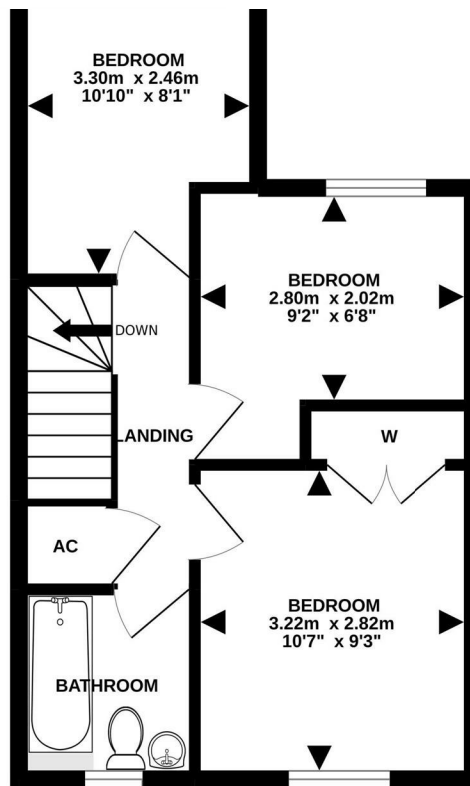
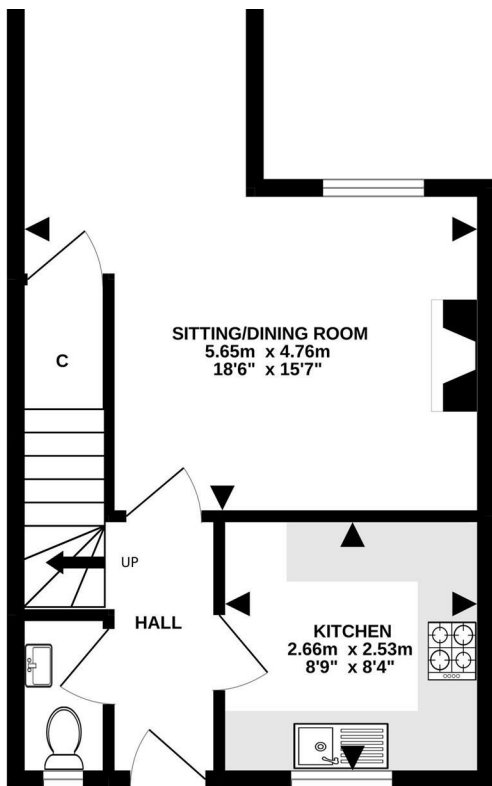
www.milesestateagents.co.uk

rightmove

Zoopla.co.uk

onTheMarket.com

TOTAL FLOOR AREA - 66.8 sq.m. (719 sq.ft.) approx.  
Made with Metropix (2022)



MILES ESTATE AGENTS

