



MILES ESTATE AGENTS

6 Burge Crescent Cotford St. Luke
Taunton TA4 1PD £300,000



A superbly presented and spacious 3 double bedroom 3 storey town house recently modernised to a high standard throughout with brand new kitchen, refitted en suite, new carpets and fresh decoration in every room in this ever popular village 5 miles from Taunton within Kingsmead catchment area. Enclosed landscaped garden, single garage and parking - all with NO ONWARD CHAIN. Early viewing highly recommended. Freehold Council Tax Band D EPC : C





Features:

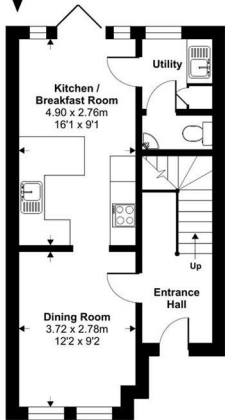
- Entrance hall
- Dining room
- Brand new kitchen/breakfast room
- Utility & cloakroom
- Spacious first floor sitting room
- Master bedroom with refitted en suite
- 2 further double bedrooms
- Family bathroom
- Enclosed landscaped garden
- Adjacent single garage & off road parking
- Freehold
- Council Tax Band D
- EPC : C
- NO ONWARD CHAIN



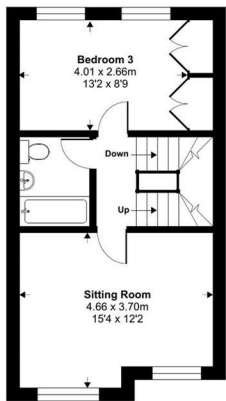
Burge Crescent, Cotford St. Luke, Taunton, TA4

Approximate Area = 1255 sq ft / 116.6 sq m

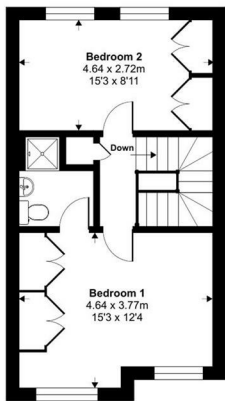
For identification only - Not to scale



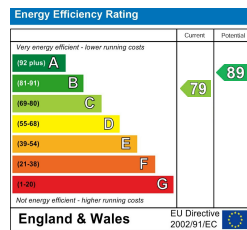
GROUND FLOOR



FIRST FLOOR



SECOND FLOOR



Floor plan produced in accordance with RICS Property Measurement Standards incorporating International Property Measurement Standards (IPMS Residential). ©valhoom 2024. Produced for Miles Estate Limited T/A Miles Estate Agents. REF: 1169273



Viewings strictly through the selling agents:

Miles Estate Agents

2 Piffin Lane, Bishops Lydeard, Taunton, Somerset, TA4 3AS

Tel: 01823 470 500

lydeard@milesestateagents.co.uk

www.milesestateagents.co.uk

rightmove

Zoopla.co.uk

onTheMarket.com

MILES ESTATE AGENTS

