



MILES ESTATE AGENTS

**Bowey Bushy Cross Lane Ruishton
Taunton TA3 5LB £500,000**



A great opportunity to purchase a substantial 4 double bedroom detached bungalow set in generous gardens now requiring modernisation and hidden at the top of a private driveway in this much favoured village just south of Taunton, within Heathfield catchment area giving easy access to the M5. On the market for the first time in over 30 years with superb proportions throughout there are 2 receptions, bathroom and en suite, double garage and lots of parking. NO ONWARD CHAIN. Early viewing highly recommended. Freehold Council Tax Band G EPC : F





Features:

- Entrance hall
- Spacious sitting room opening to
- Generous dining room
- Good size kitchen
- Utility & cloakroom
- Master bedroom with large en suite
- 3 further double bedrooms
- Family bathroom
- Large enclosed gardens to front and rear
- Double garage and lots of parking
- NO ONWARD CHAIN
- Council Tax Band G
- EPC : F



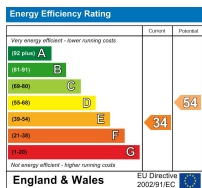
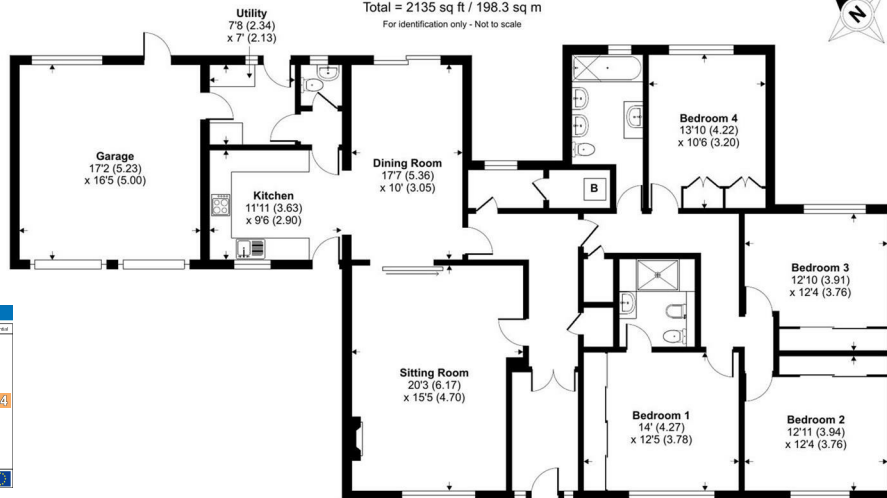
Bushy Cross Lane, Taunton, TA3

Approximate Area = 1848 sq ft / 171.7 sq m

Garage = 287 sq ft / 26.6 sq m

Total = 2135 sq ft / 198.3 sq m

For identification only - Not to scale



Floor plan produced in accordance with RICS Property Measurement Standards incorporating International Property Measurement Standards (IPMS2 Residential). © rnhcecom 2023. Produced for Miles Alexander Limited T/A Miles Estate Agents. REF: 1139929



Viewings strictly through the selling agents:

Miles Estate Agents

2 Piffin Lane, Bishops Lydeard, Taunton, Somerset, TA4 3AS

Tel: 01823 470 500

lydeard@milesestateagents.co.uk

www.milesestateagents.co.uk

rightmove

Zoopla.co.uk

onTheMarket.com



MILES ESTATE AGENTS

