



MILES ESTATE AGENTS

**19 Southgate Wiveliscombe
Taunton TA4 2NG Guide Price £230,000**



On the open market for the first time ever, and with lots of potential for improvement, this lovely, spacious 3 bedroom terraced house is set in good size gardens and close to Kingsmead School and the amenities of this popular small town 11 miles west of Taunton. Recent new roof but otherwise lots of original features - early viewing recommended. Freehold Council Tax band B EPC : E.





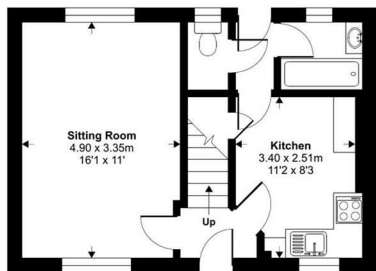
Features:

- Entrance lobby
- Spacious living room
- Kitchen/breakfast room
- Ground floor bathroom
- Cloakroom
- 3 good size bedrooms
- Useful first floor cloakroom
- Lovely enclosed gardens
- NO ONWARD CHAIN
- Freehold
- Council Tax Band B
- EPC : E

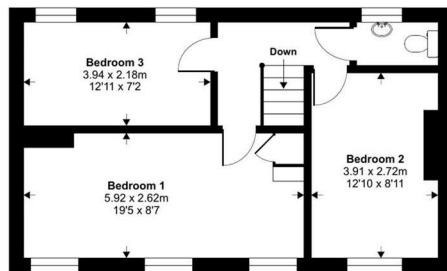


Southgate, Wiveliscombe, Taunton, TA4

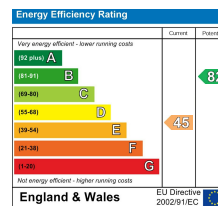
Approximate Area = 856 sq ft / 79.5 sq m
For identification only - Not to scale



GROUND FLOOR



FIRST FLOOR



Floor plan produced in accordance with RICS Property Measurement Standards incorporating International Property Measurement Standards (IPMS2 Residential). © ricshecom 2024. Produced for Miles Alexander Limited T/A Miles Estate Agents. REF: 1141667



Viewings strictly through the selling agents:

Miles Estate Agents

2 Piffin Lane, Bishops Lydeard, Taunton, Somerset, TA4 3AS

Tel: 01823 470 500

lydeard@milesestateagents.co.uk

www.milesestateagents.co.uk



rightmove

Zoopla.co.uk

onTheMarket.com

MILES ESTATE AGENTS

