



MILES ESTATE AGENTS

**7 Quantock Way Kingston St. Mary
Taunton TA2 8JG £310,000**



A well presented and extended 2 bedroom semi detached house set in large south facing gardens with fantastic views front and rear, close to the primary school in this much favoured village north of Taunton on the edge of the Quantock Hills. Cosy sitting room with woodburner, good size kitchen / dining room, useful conservatory and lots of parking - early viewing highly recommended. Freehold Council Tax Band B EPC : C





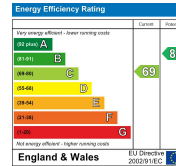
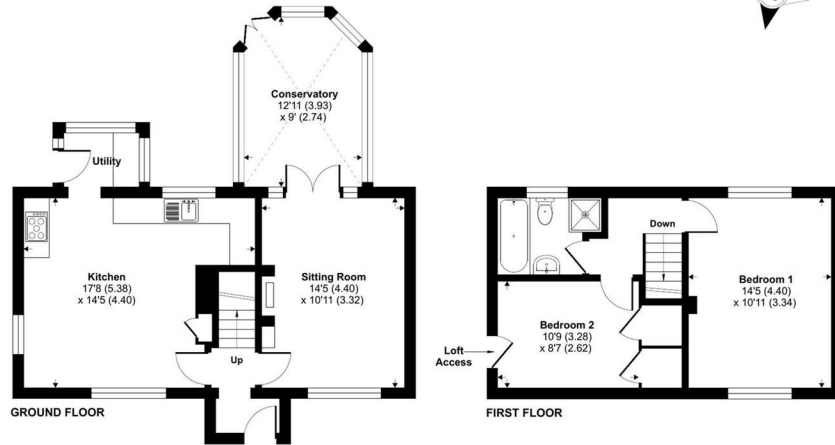
Features:

- Entrance porch & hall
- Cosy sitting room with woodburner
- Spacious kitchen/dining room
- Useful conservatory
- Small utility
- 2 good size bedrooms
- Bathroom
- Fantastic mature south facing garden backing on to open fields
- Lots of off road parking
- Super views front & rear
- Freehold
- Council Tax Band B
- EPC : C



Quantock Way, Kingston St. Mary, Taunton, TA2

Approximate Area = 948 sq ft / 88 sq m
For identification only - Not to scale



Floor plan produced in accordance with RICS Property Measurement Standards incorporating International Property Measurement Standards (IPMS Residential). © rics.com 2024. Produced for Miles Alexander Limited T/A Miles Estate Agents. REF: 1147341



Viewings strictly through the selling agents:

Miles Estate Agents

2 Piffin Lane, Bishops Lydeard, Taunton, Somerset, TA4 3AS

Tel: 01823 470 500

lydeard@milesestateagents.co.uk

www.milesestateagents.co.uk



rightmove

Zoopla.co.uk

onTheMarket.com

MILES ESTATE AGENTS

