



MILES ESTATE AGENTS

**Parkgate House , West Bagborough,
Taunton, Somerset TA4 3EP
£750,000**



***OFFERS

INVITED*** A substantial
5 bedroom, 4 bathroom
detached modern house
offering generously
proportioned living spaces
and set in around an acre
of grounds on the edge of
this most favoured
Quantock village. Superb
kitchen/dining/family
room, double garage,
parking and NO
ONWARD CHAIN. Early
viewing highly
recommended Freehold
Council Tax Band F. EPC:
F





Features:

- Entrance Porch
- Large Kitchen /Dining/Family Room
- Conservatory
- Spacious Sitting Room
- Study
- Utility & Cloakroom
- 5 Double Bedrooms
- 3 En Suites
- Refitted Family Bathroom
- Garden Extending to around 1 Acre
- Large Patio with Play Area & Pool
- Double Garage & Workshop
- Council Tax Band F
- Freehold
- NO ONWARD CHAIN



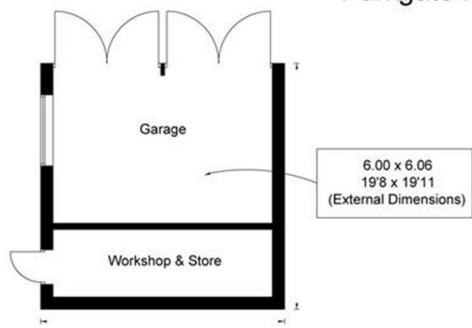






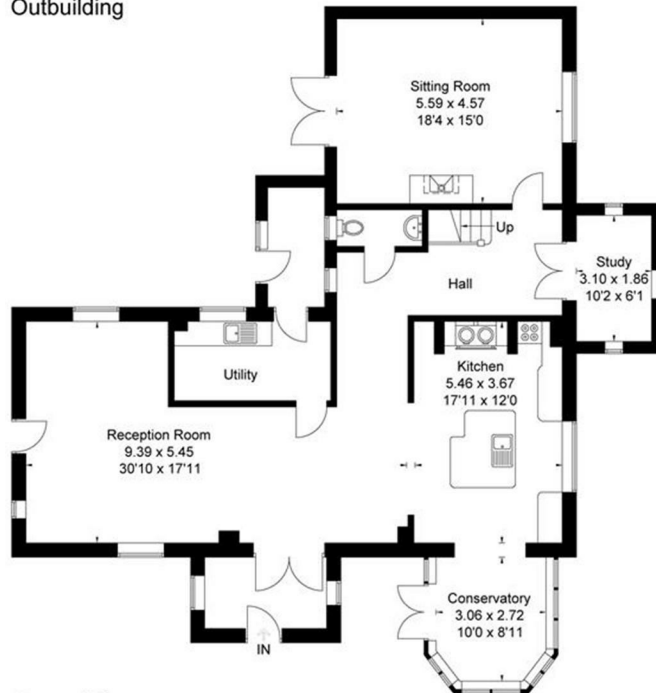
Parkgate House, New Road, West Bagborough, Somerset ,TA4 3EP

Approximate Gross Internal Area = 261 sq m / 2809 sq ft
 Outbuilding = 29 sq m / 312 sq ft
 Total = 290 sq m / 3121 sq ft

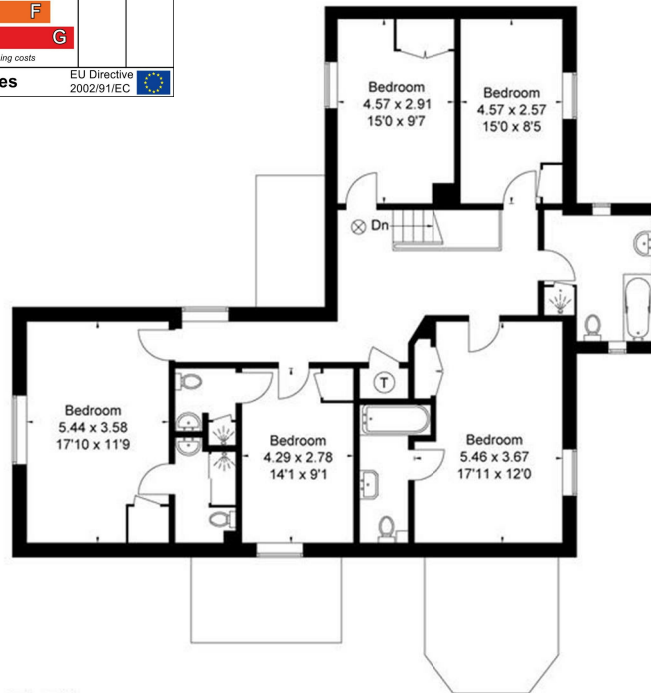


(Not Shown In Actual Location / Orientation)
 Outbuilding

Energy Efficiency Rating		
	Current	Potential
Very energy efficient - lower running costs		
(92 plus) A		
(81-91) B		
(69-80) C		73
(55-68) D		
(39-54) E	37	
(21-38) F		
(1-20) G		
Not energy efficient - higher running costs		
England & Wales		
EU Directive 2002/91/EC		



Ground Floor



First Floor

FLOORPLANZ © 2014 0845 6344080 Ref: 130607

This plan is for layout guidance only. Drawn in accordance with RICS guidelines. Not drawn to scale unless stated. Windows & door openings are approximate. Whilst every care is taken in the preparation of this plan, please check all dimensions, shapes & compass bearings before making any decisions reliant upon them.



Viewings strictly through the selling agents:

Miles Estate Agents

2 Piffin Lane, Bishops Lydeard, Taunton,
 Somerset, TA4 3AS

Tel: 01823 470 500

lydeard@milesestateagents.co.uk

www.milesestateagents.co.uk

rightmove

OnTheMarket.com

MILES ESTATE AGENTS



