



MILES ESTATE AGENTS

Cheddon Corner Cottage Cheddon Fitzpaine
Taunton TA2 8LB Guide Price: £625,000



An enchanting detached cottage with secret garden tucked away behind a wall with views over the surrounding countryside to Hestercombe Gardens. Sitting room, kitchen/dining room, garden room, 2 double bedrooms, bathroom & cloakroom.

Detached Barn with ancillary accommodation of 2 further double bedrooms both en-suite. Beautiful private gardens - a haven for wildlife! Also featured in Period Living. Freehold. Council Tax Band C, EPC: E. what3words: [reply.print.across](https://www.what3words.com/reply.print.across)





Features

- Enchanting Detached Country Cottage
- Beautiful Bespoke Kitchen/Dining Room
- Sitting Room with Woodburner
- Stylish Recently Built Garden Room
- 2 Double Bedrooms & Spacious Family Bathroom
- Cloakroom - "The Thunderbox"
- Detached Barn with 2 Further En-Suite Double Bedrooms
- Pretty Secret Cottage Gardens
- Private and Secluded Location
- Views over Countryside towards Hestercombe Gardens
- Rural yet within easy access of Taunton
- FREEHOLD Council Tax Band C







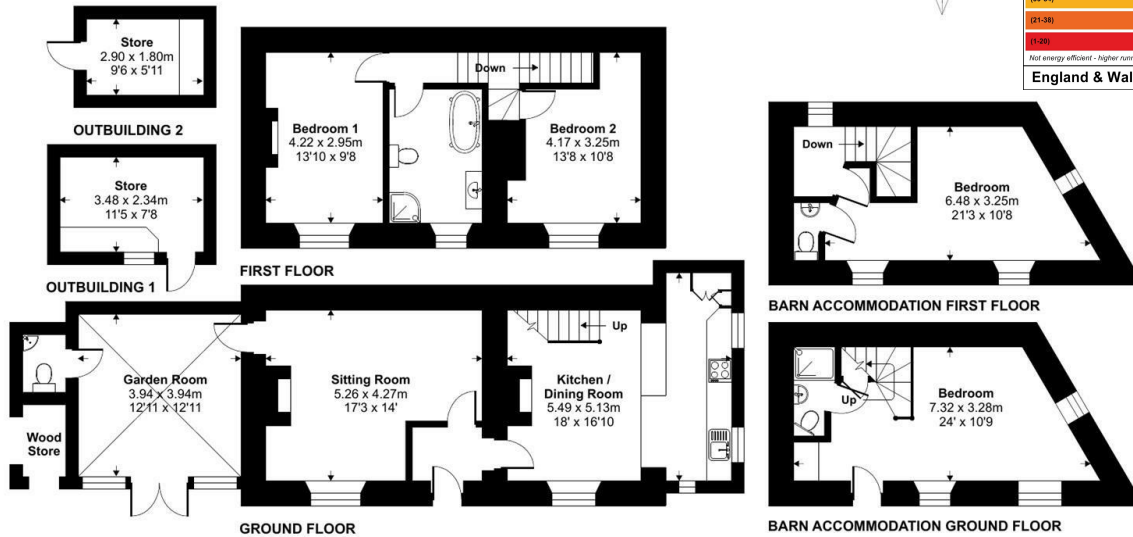
Cheddon Corner Cottage, Cheddon Fitzpaine, Taunton, TA2

Approximate Area = 1196 sq ft / 111.1 sq m
 Barn Accommodation = 468 sq ft / 43.5 sq m
 Outbuilding(s) = 147 sq ft / 13.6 sq m
 Total = 1811 sq ft / 168.2 sq m

For identification only - Not to scale



Energy Efficiency Rating		Current	Potential
Very energy efficient - lower running costs			
(92 plus)	A		
(81-91)	B		
(69-80)	C		
(55-68)	D		
(39-54)	E	39	
(21-38)	F		
(1-20)	G		
Not energy efficient - higher running costs			
England & Wales		EU Directive 2002/91/EC	



Certified Property Measurer
 Floor plan produced in accordance with RICS Property Measurement Standards incorporating International Property Measurement Standards (IPMS2 Residential). © richrecom 2023. Produced for Miles Alexander Limited T/A Miles Estate Agents. REF: 1036333



Viewings strictly through the selling agents:

Miles Estate Agents

2 Piffin Lane, Bishops Lydeard, Taunton,
 Somerset, TA4 3AS

Tel: 01823 470 500

lydeard@milesestateagents.co.uk

www.milesestateagents.co.uk



rightmove

Zoopla.co.uk

onTheMarket.com

MILES ESTATE AGENTS

