



MILES ESTATE AGENTS

1 Atlantic Villas Cleeve Hill
Watchet TA23 0JP £295,000



A well presented and fully renovated 2 bedroom semi detached house with useful attic room in this wonderful elevated position between Watchet and Blue Anchor with 2 receptions, super views and a garden requiring landscaping. Bathroom and full En Suite, LPG gas central heating, double glazing and 2 parking spaces. Early viewing highly recommended. Freehold Council Tax Band C

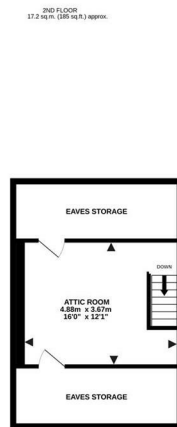
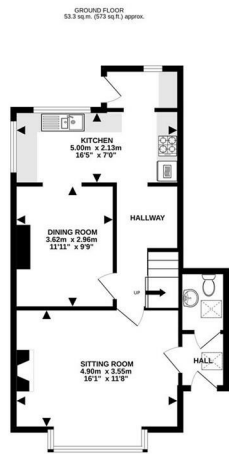
AGENTS NOTE The road up to Cleeve Hill from Watchet has been closed so access is via Washford / Old Cleeve / Blue Anchor only***





- Features:
- Entrance Lobby
 - Cloakroom
 - Spacious Sitting Room with Woodburning Stove
 - Inner Hall
 - Separate Dining Room
 - Modern Kitchen
 - Utility
 - Master Bedroom with En Suite Bathroom
 - 2nd Bedroom / Study
 - Useful Attic Room
 - Good Size Garden Requiring Landscaping
 - Large Workshop/Shed
 - LPG Central Heating & Double Glazing
 - Freehold
 - Council Tax Band C





TOTAL FLOOR AREA: 109.3 sq.m. (1175 sq.ft.) approx.
Made with Metapic ©2023



Viewings strictly through the selling agents:

Miles Estate Agents

2 Piffin Lane, Bishops Lydeard, Taunton,
Somerset, TA4 3AS

Tel: 01823 470 500

lydeard@milesestateagents.co.uk

www.milesestateagents.co.uk

rightmove

Zoopla.co.uk

onTheMarket.com

MILES ESTATE AGENTS

