



**MILES ESTATE AGENTS**

**The New House Station Road  
Bishops Lydeard TA4 3BU £425,000**



A beautifully presented 4 bedroom detached modern house set in a generous plot with fabulous kitchen/dining room and separate study in this ever popular Quantock village within Kingsmead catchment area. Master bedroom with en suite, larger than average garage and lots of parking - early viewing highly recommended. Freehold Council Tax Band E. EPC rating: B.



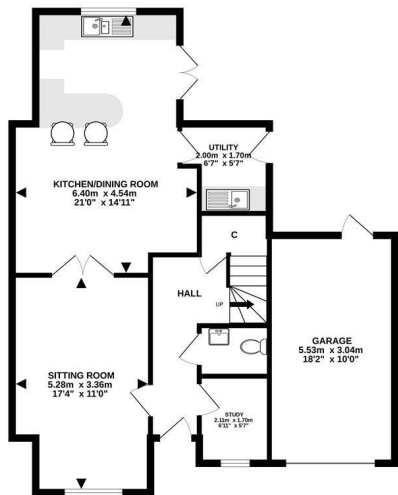


## Features:

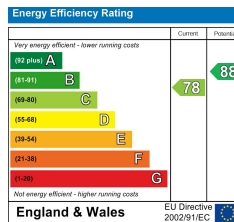
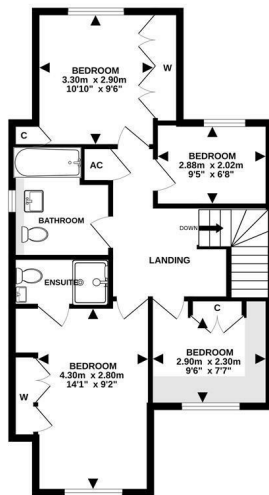
- Entrance Hall
- Spacious Sitting Room
- Fabulous Kitchen/Dining Room
- Utility Room
- Separate Study
- Cloakroom
- Master Bedroom with En Suite
- 3 Further Good Size Bedrooms
- Lovely Family Bathroom
- Enclosed Garden to Rear
- Large Garden to Front with Lots of Parking
- Larger than Average Garage
- Freehold
- Council Tax Band E



GROUND FLOOR  
78.8 sq.m. (848 sq.ft.) approx.



1ST FLOOR  
58.7 sq.m. (632 sq.ft.) approx.



TOTAL FLOOR AREA: 137.5 sq.m. (1480 sq.ft.) approx.  
Made with Metropack ©2023



Viewings strictly through the selling agents:

**Miles Estate Agents**

2 Piffin Lane, Bishops Lydeard, Taunton, Somerset, TA4 3AS

Tel: 01823 470 500

lydeard@milesestateagents.co.uk

www.milesestateagents.co.uk

rightmove

Zoopla.co.uk

onTheMarket.com



MILES ESTATE AGENTS

