



HUNTERS[®]
HERE TO GET *you* THERE

 2  1  2  C

Baronet Grove, London, N17

Offers In Excess Of £560,000



EXTENDED TO THE REAR + BRICK BUILT OUTHOUSE

Tucked away on the charming and sought after Baronet Grove in N17, this CHAIN FREE well presented two double bedroom mid-terrace period property effortlessly combines classic character with modern enhancements.

Set behind an attractive façade, the home welcomes you with rich mahogany varnished floorboards that flow throughout the ground floor, adding warmth and timeless appeal. Two generously sized reception rooms offer flexible living and dining spaces, ideal for entertaining or relaxing, while a convenient downstairs toilet enhances functionality.

At the rear, an extended kitchen is bathed in natural light thanks to a good sized skylight, creating an airy and inviting atmosphere perfect for cooking and casual meals. The kitchen opens out to a 70ft garden, featuring a fully equipped outhouse at the far end. The outhouse offers versatile use as a home office, studio, or guest space, and comes complete with running electrics, on its doorstep a working pond, adding a unique and calming touch to the outdoor space.

Upstairs, the property continues to impress with two spacious double bedrooms, both bright and well proportioned. A large family bathroom serves the upper floor, offering both a bathtub with overhead shower, along with ample storage space. This home offers an exceptional opportunity for buyers seeking period charm, modern comfort, and generous outdoor space, all within easy reach of local amenities, parks, and transport links.

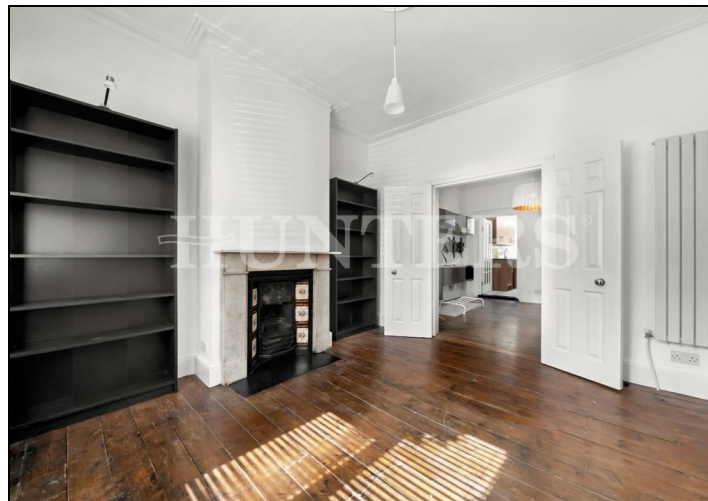
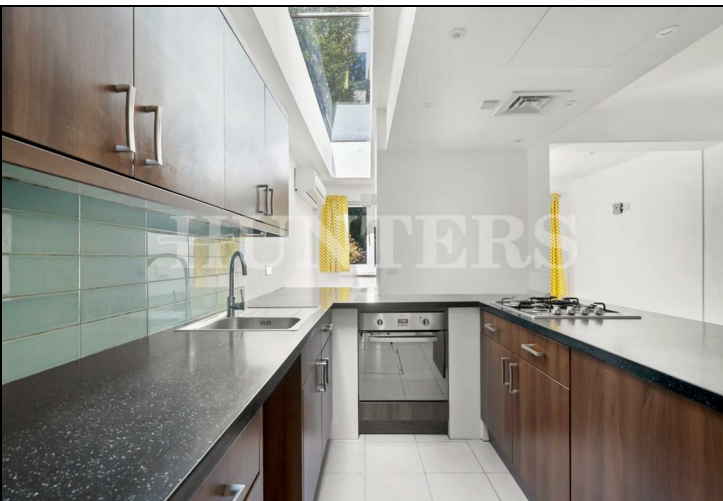
Council Tax - Band C

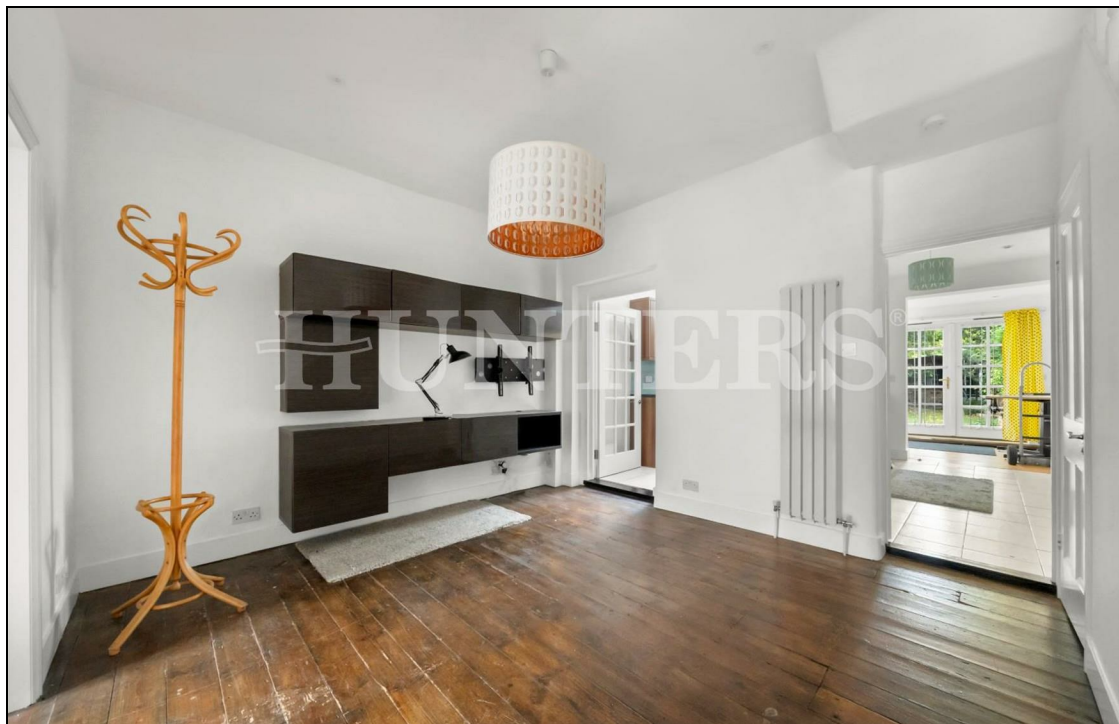
EPC - C



KEY FEATURES

- Chain free
- Charming 2-bedroom period property
 - Outhouse
 - 70ft rear garden
 - Downstairs W/C
- Good size for families
- Extended to rear
- Council Tax - D
 - EPC - C
- Potential for loft extension (STPP)

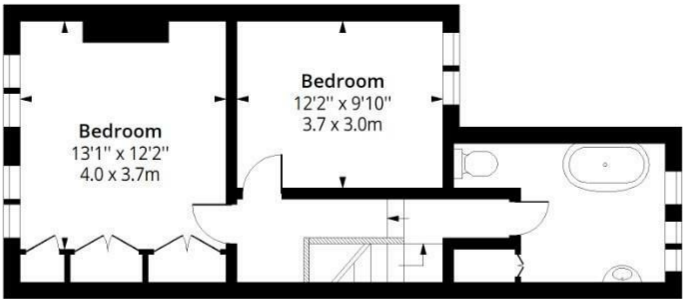
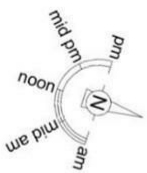






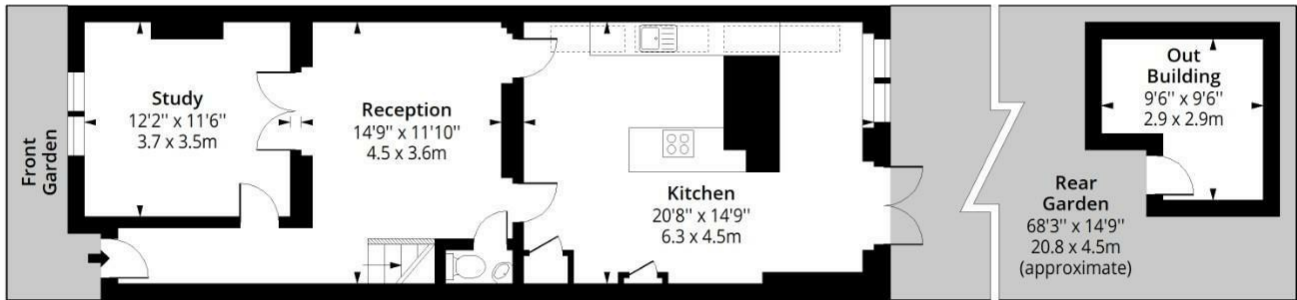
Baronet Grove, N17

Approximate Gross Internal Area = 1203 Sq Ft - 111.76 Sq M



First Floor

Floor Area 492 Sq Ft - 45.71 Sq M

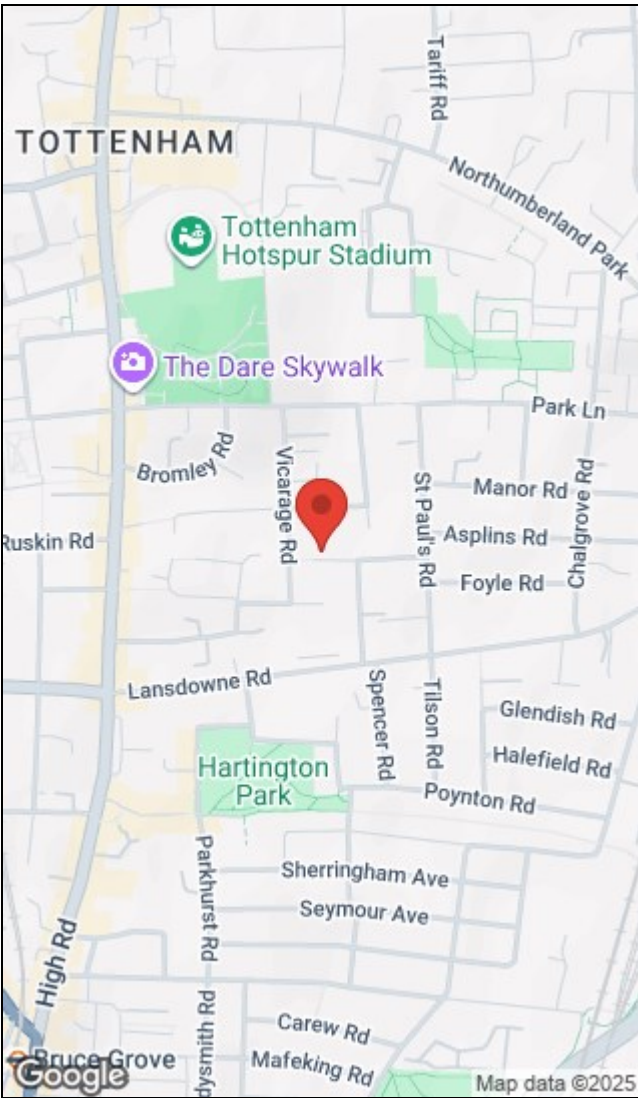


Ground Floor

Floor Area 711 Sq Ft - 66.05 Sq M



Measured according to RICS IPMS2. Floor plan is for illustrative purposes only and is not to scale. Every attempt has been made to ensure the accuracy of the floor plan shown, however all measurements, fixtures, fittings and data shown are an approximate interpretation for illustrative purposes only. 1 sq m = 10.76 sq feet.



Energy Efficiency Rating			Environmental Impact (CO ₂) Rating		
	Current	Potential		Current	Potential
Very energy efficient - lower running costs			Very environmentally friendly - lower CO ₂ emissions		
(92 plus) A			(92 plus) A		
(81-91) B			(81-91) B		
(69-80) C			(69-80) C		
(55-68) D			(55-68) D		
(39-54) E			(39-54) E		
(21-38) F			(21-38) F		
(1-20) G			(1-20) G		
Not energy efficient - higher running costs			Not environmentally friendly - higher CO ₂ emissions		
England & Wales			England & Wales		
EU Directive 2002/91/EC			EU Directive 2002/91/EC		

284 High Road, Tottenham, London, N15 4AJ | 0208 261 7570
tottenham@hunters.com | www.hunters.com



This Hunters business is independently owned and operated by Alexander Williams Ltd : Registered Address: 284 High Road, London, England, N15 4AJ : Registered Number: 10411714 England and Wales : VAT No: 255 9446 70 with the written consent of Hunters Franchising Limited.