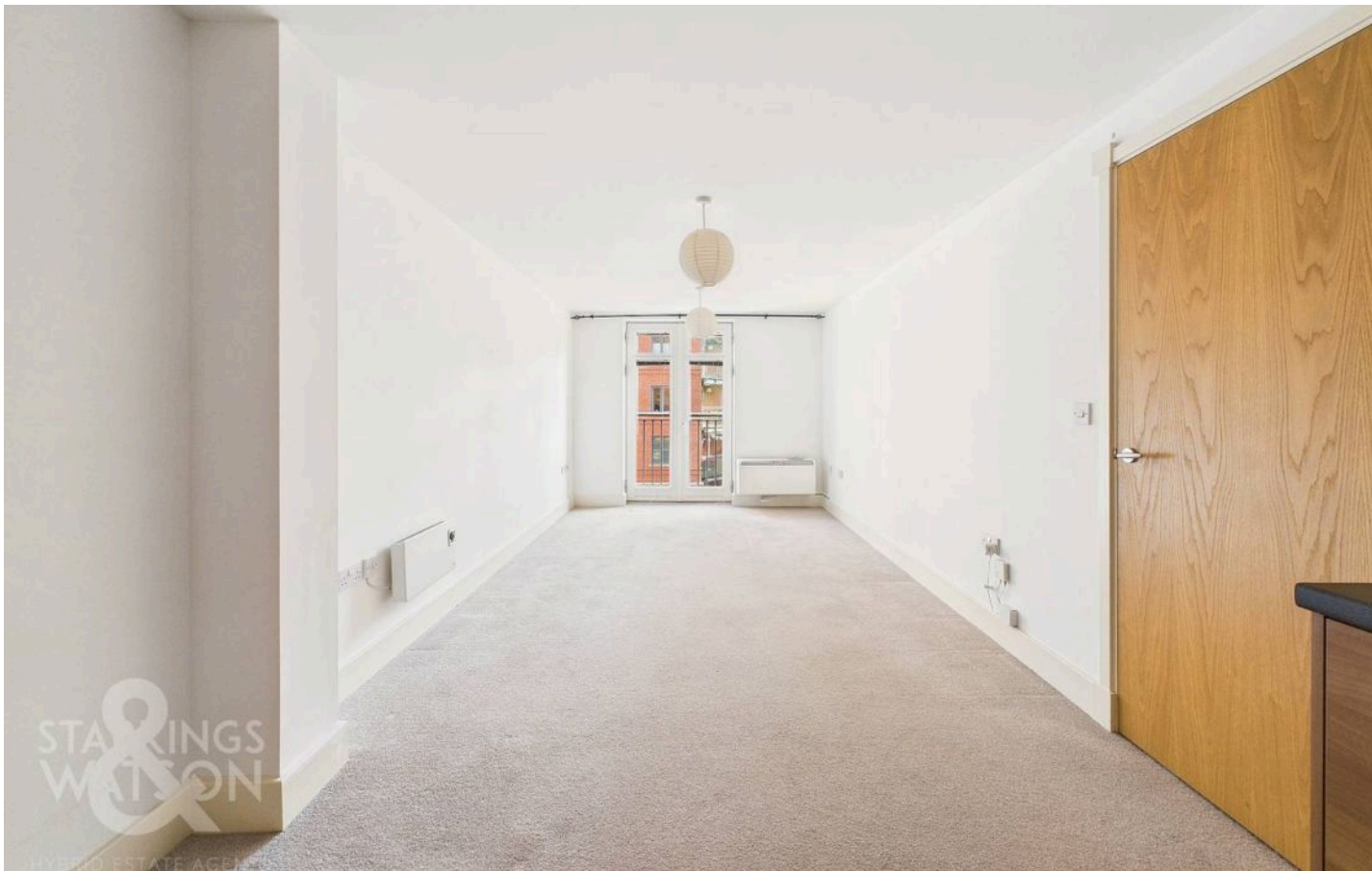




St. Stephens Road, Norwich - NR1 3SG



St. Stephens Road

Norwich

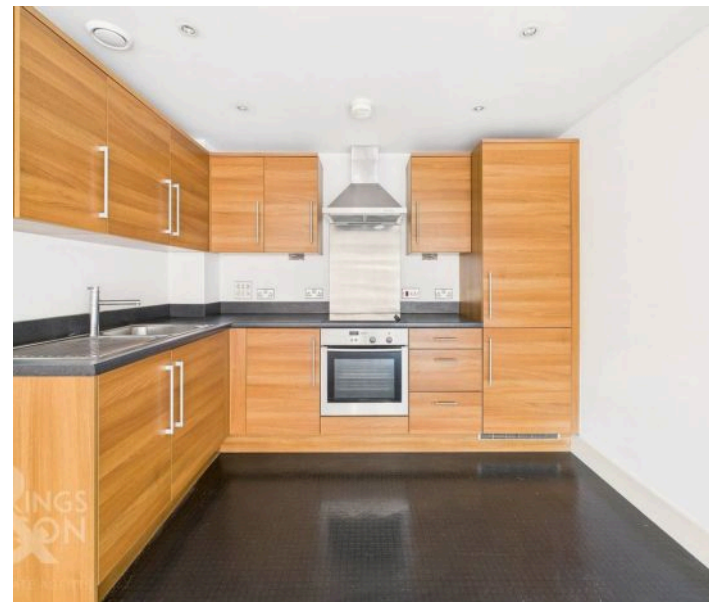
This modern CITY CENTRE apartment offers OPEN PLAN LIVING and ALLOCATED PARKING for one vehicle. This well kept building offers COMMUNAL GARDENS and a characterful feel. Internally, a HALL ENTRANCE offers STORAGE, leading into the OPEN PLAN SITTING ROOM and kitchen with an integrated FRIDGE/FREEZER and washer/dryer. French doors open to a JULIET style BALCONY. One DOUBLE BEDROOM offers a built-in wardrobe, with an adjacent family bathroom including a SHOWER over the bath.

Council Tax band: A

EPC Energy Efficiency Rating: C

EPC Environmental Impact Rating: C

- City Centre Apartment
- Open Plan Living
- Allocated Parking
- Hall Entrance with Storage
- 23' Open Plan Kitchen/Living Space
- One Double Bedroom with Wardrobe
- Family Bathroom with Shower
- Communal Gardens



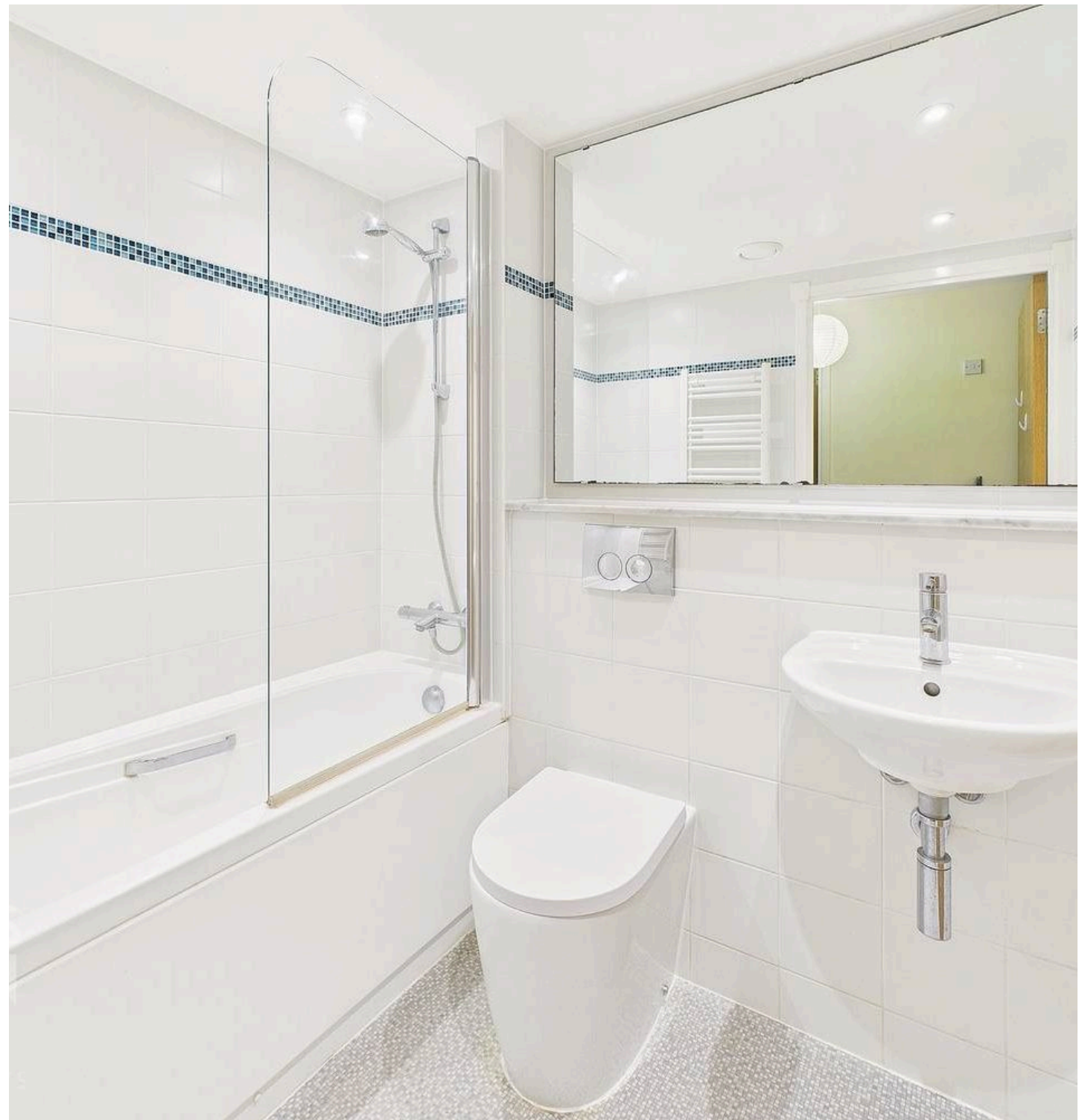
Located in the heart of Norwich City Centre to provide an urban retreat, whilst being far enough away from the hustle and bustle, but within convenient walking distance to the main shopping district, city college, train station and Riverside complex. A number of pubs, cafes, restaurants, cinema and bars can be found along with fantastic shopping outlets. Easy access to main road links can be found, in particular the A11 and A47.

SETTING THE SCENE

With well kept communal areas, the property offers a secure entrance with parking provided for one vehicle.

THE GRAND TOUR

Finished with wood effect flooring, the hall entrance offers built-in storage, entry telecom system and an electric heater. Doors lead off to the open plan sitting/dining room and kitchen - finished with two types of flooring to mark the separate sections. The sitting room offers fitted carpet and two heaters, with French doors to a Juliet style balcony. The kitchen offers a vinyl flooring with a full range of wall and base level units, an inset electric ceramic hob and built-in electric oven, along with an integrated fridge/freezer and washer/dryer.



Back into the hall, a door leads to the double bedroom, with fitted carpet and a built-in double wardrobe. The family bathroom is finished with a contemporary white three piece suite, with tiled walls and a shower over the bath. A further cupboard offers storage.

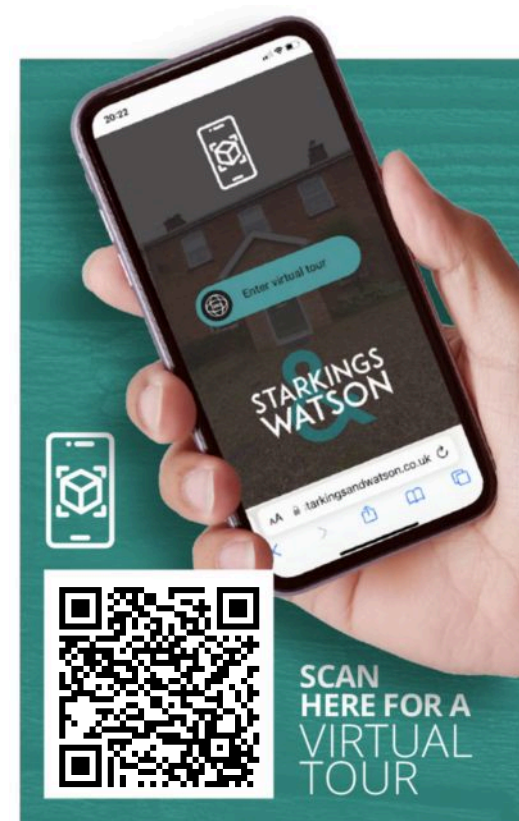
FIND US

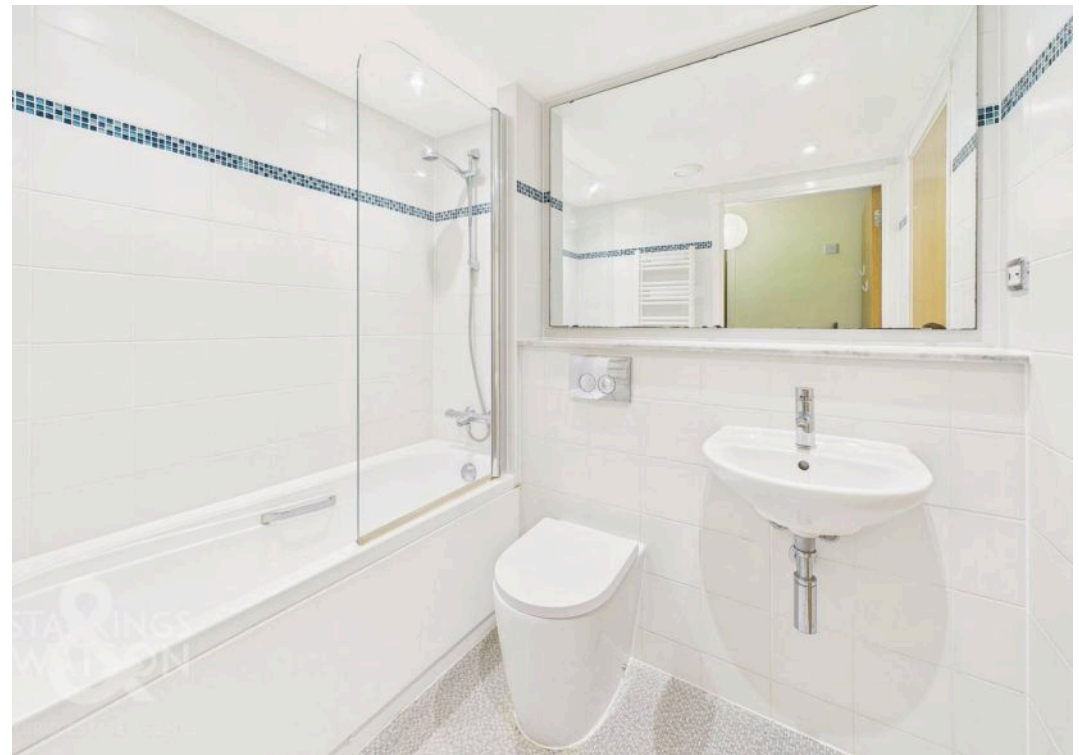
Postcode : NR1 3SG

What3Words : ///chins.coast.frames

VIRTUAL TOUR

View our virtual tour for a full 360 degree of the interior of the property.

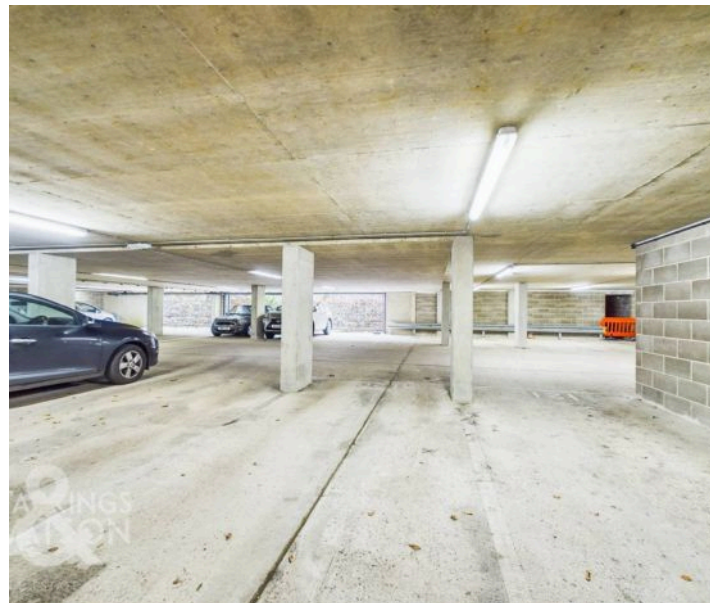


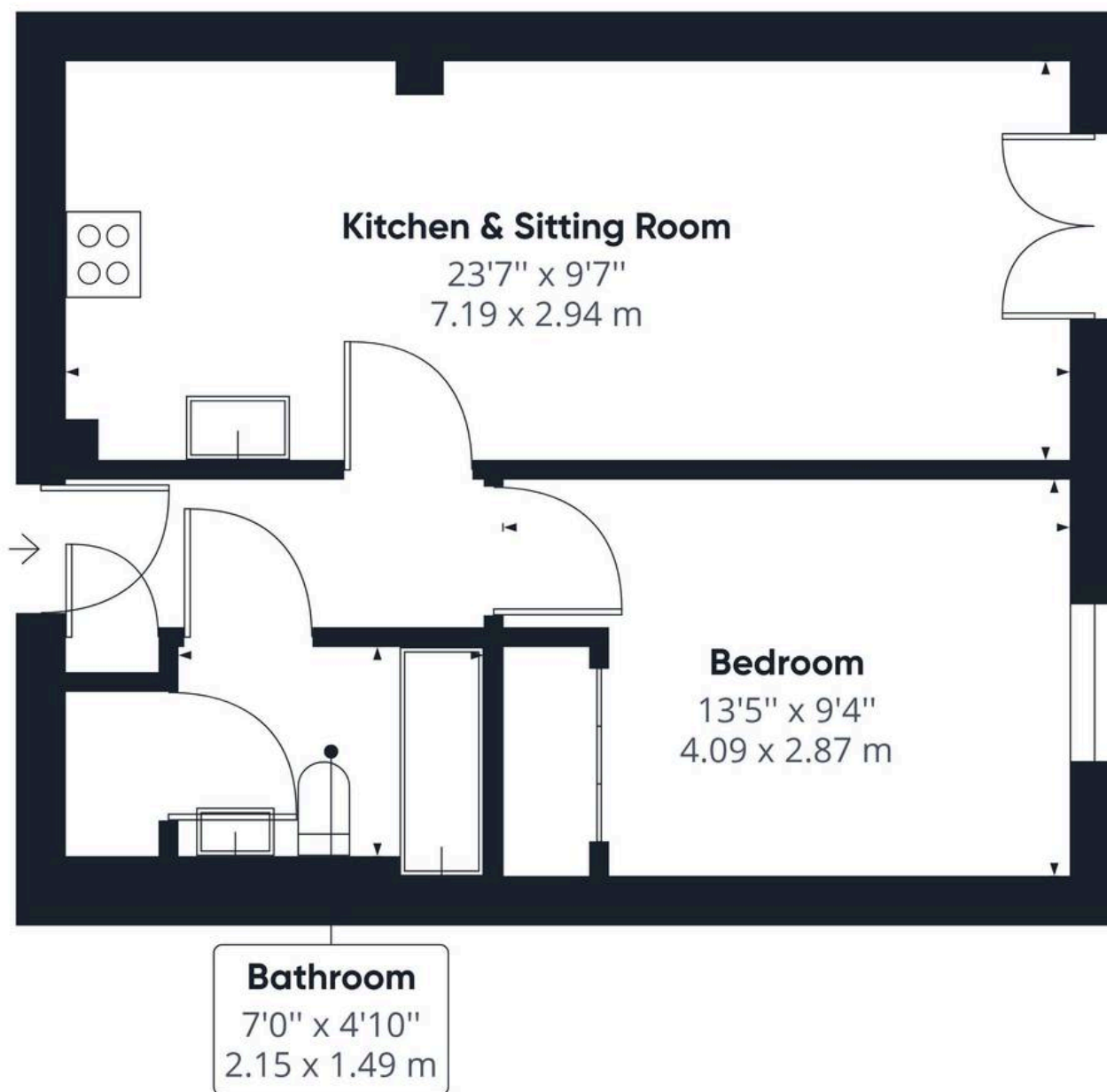




THE GREAT OUTDOORS

Lawned communal gardens can be found throughout the development, with access within the building to the allocated parking.





Approximate total area⁽¹⁾

444.96 ft²

41.34 m²

(1) Excluding balconies and terraces

While every attempt has been made to ensure accuracy, all measurements are approximate, not to scale. This floor plan is for illustrative purposes only.

GIRAFFE360



Starkings & Watson Hybrid Estate Agents

Roxburgh House, Rosebery Business Park Mentmore Way - NR14 7XP

01603 336116 • centralisedhub@starkingsandwatson.co.uk • starkingsandwatson.co.uk/

Disclaimer: Whilst every care has been taken to prepare these sales particulars, they are for guidance purposes only. All measurements are approximate and for general guidance purposes only and whilst every care has been taken to ensure their accuracy, they should not be relied upon and potential buyers are advised to recheck the measurements.