

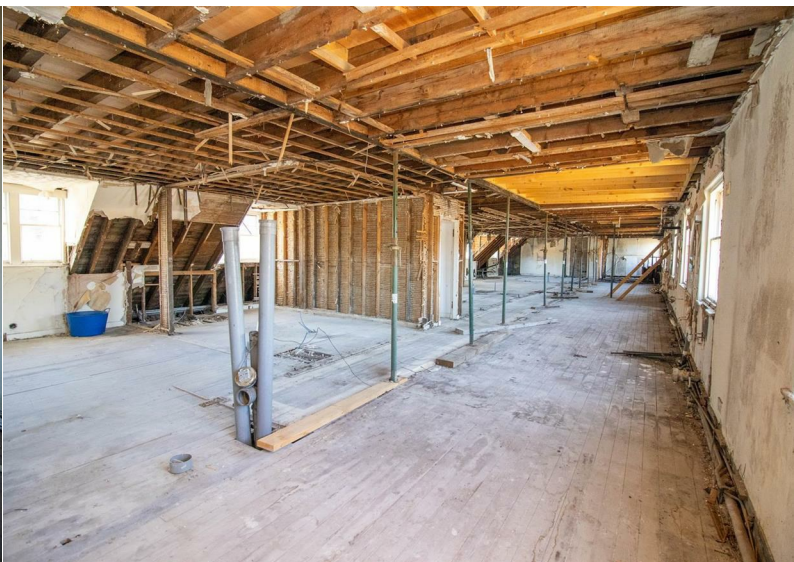
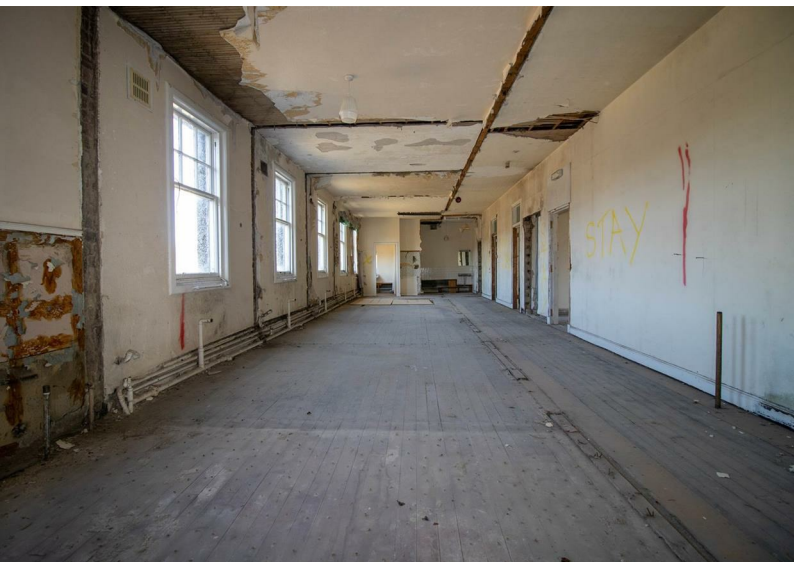


BANNERMANBURKE

PROPERTIES LIMITED

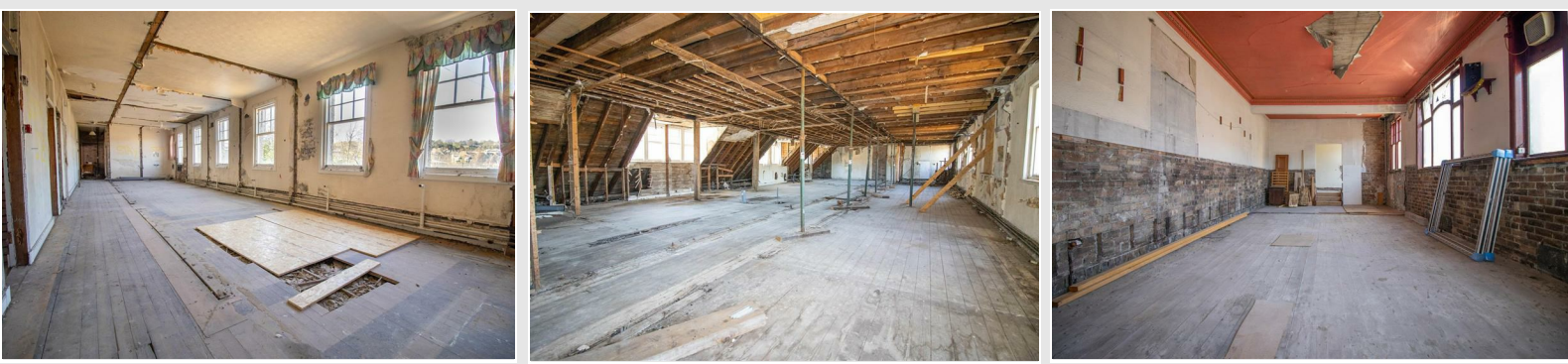


Buccleuch Annex 1 Trinity Street, Hawick, TD9 9NR
Offers Over £85,000



Buccleuch Annex 1 Trinity Street, Hawick, TD9 9NR

Offers Over £85,000



■ NEW ROOF INCLUDING FLASHING AND GUTTERS ■ DEVELOPMENT OF WORKSHOP AT BASEMENT LEVEL WITH VEHICLE ACCESS AND COURTYARD ■ PLANNING PERMISSION GRANTED FOR WORKSHOP ■ POTENTIAL DEVELOPMENT OF TWO UPPER FLOORS ■ NEW PHASE 3 ELECTRIC MAIN AND FUSE BOARD IN WORKSHOP ■ NEW WATER MAIN AND METER ■ PROFESSIONAL SECURITY CAMERA SYSTEM ■ MISC BUILDING MATERIAL REQUIRED FOR DEVELOPMENT INCLUDED IN SALE

A fantastic opportunity to purchase the Buccleuch Annex with amazing potential for development. Set over three floors with the prospect of converting the upper two floors into either 4 residential dwellings or a mix of residential/commercial units, this property must be seen to fully appreciate. Vehicle access to the rear via large secure doors leads to an already developed workshop at basement level with planning permission granted in 2020 (some works still to be completed). The workshop has been completed to an exacting standard with 3 phase electric main and fuse board, concrete floors with damp proof course, insulation and double doors, ideal for deliveries or private car parking for an upstairs development. Other benefits such as security cameras and a new roof are a great advantages.

The Workshop

The workshop and courtyard are entered through a private vennel which leads to the rear of the building. Pedestrian and vehicular access to the workshop is from the rear courtyard. Solid timber double doors and single entry door with 5 lever mortice lock provide secure entry into the large workshop and store rooms. The concrete installed flooring with damp proof course and metal reinforcing are all compliant with building regulations and have been passed to date. The timber external partition including OSB boarding, thermal building paper wrap and Kingspan insulation, have also been passed to building

regulations. The insulation required to complete the inside perimeter timber frame is included in the sale and on site.

Development Potential

The two upper floors are currently cleared of all materials with walls removed providing a blank canvas for development. Plans have been drawn up as a guide, to form a mix of residential and commercial properties (available on request). The floor space of the combined levels is approximately 435 Square Metres (4683 Square Feet). These drawings are indicative to enable the permissions being granted for the workshop below and will be looked at favourably once the workshop is completed and passed by building regulations.

Floor Sizes (Approximate)

Basement Workshop - 22M x 9.6M

Ground Floor - 22M x 9.6M

First Floor - 30M x 8.6M

Total Space - 680 Square Metres (7320 Square Feet)

Additional Information

The rear courtyard is private and exclusive to the Annex building.

A security camera system has been professionally installed and includes 2 cameras, hard drive and monitor.

The workshop is exempt from business rates due to small

business relief rates. (Dependant on ownership)

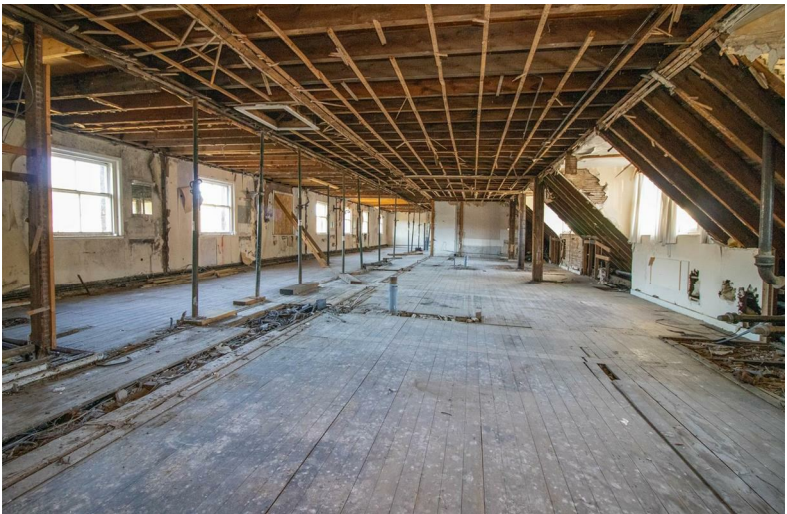
New 3 phase electric main and fuse board to separate the supply between the Annex and the former Buccleuch Hotel.

New water main and meter fitted again to separate the Annex and the former Buccleuch Hotel.

A new flat roof has been installed along with gutters and flashings. The dormers still need attention and the materials, including Sarnafil membrane on site and included in purchase.

Services

Mains Electricity and Mains Drainage.



Offers:

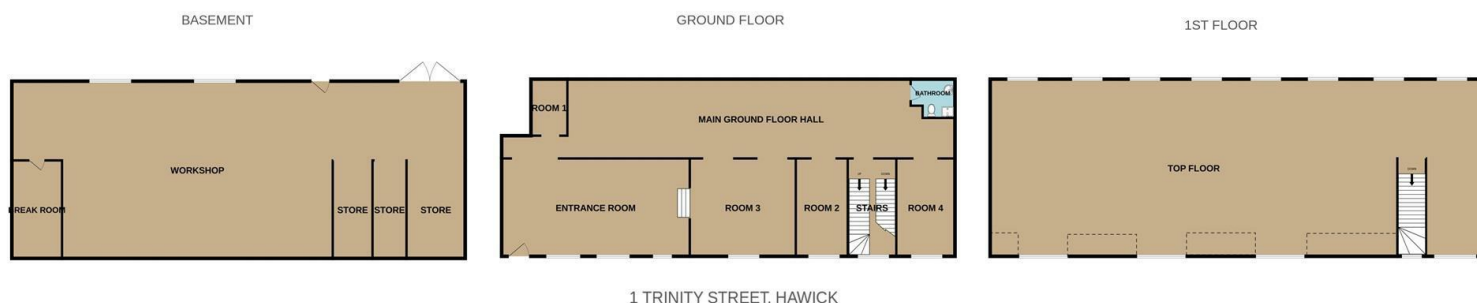
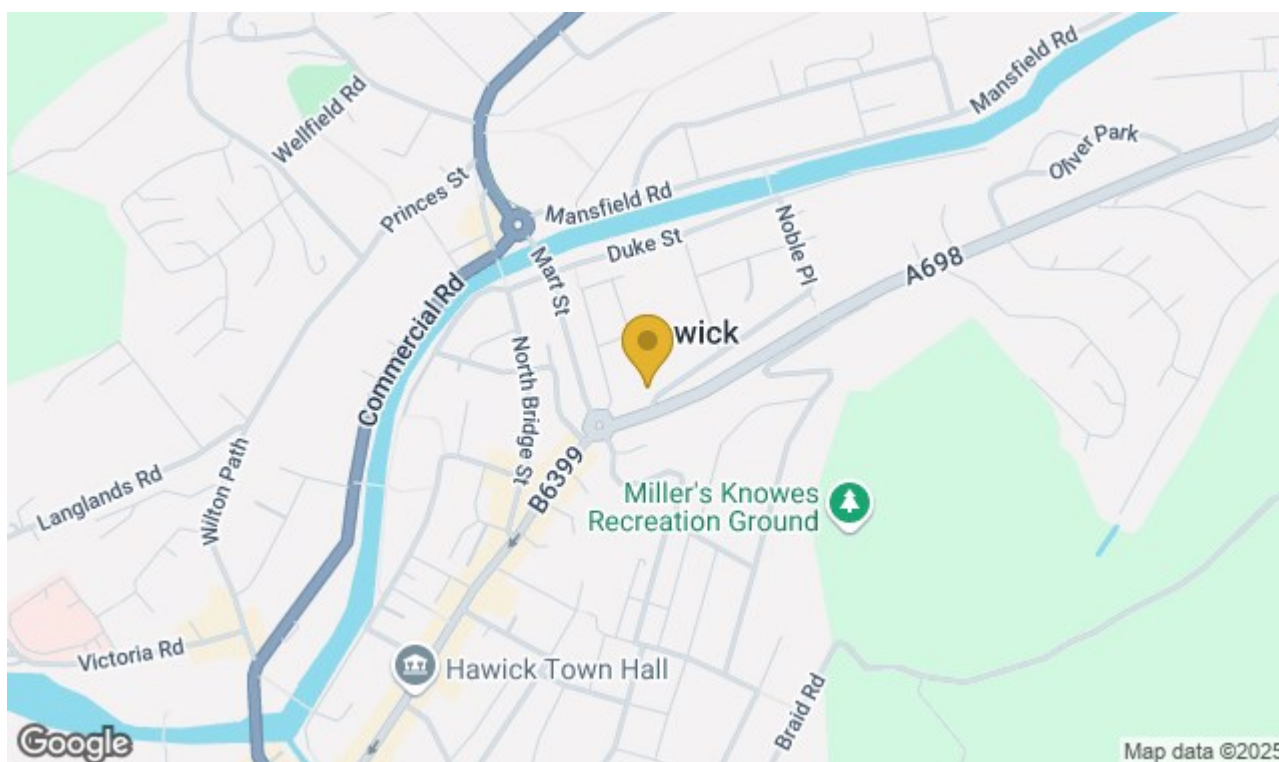
Offers are invited and should be submitted in Scottish legal form to Bannerman Burke Properties Ltd, 28 High Street, Hawick, TD9 9EH. Tel (01450) 375567. property@bannermanburke.co.uk. Any person wishing to note their interest in the property, or be informed of a closing date, should notify the selling agents by way of their solicitors as soon as possible. The seller shall not be bound to fix a closing date or accept the highest or, indeed any offer and reserves the right to sell privately.

Viewings:

Strictly by appointment through Bannerman Burke Properties Ltd.

Notice:

These particulars do not form any part of any contract. Whilst every effort has been made to ensure the accuracy of the particulars, the statements or floor/land plans contained herein are not guaranteed nor to scale. Measurements have been taken by sonic tape at the widest point and are approximate. Services and appliances have not been tested for efficiency or safety by the selling agents. No warranties are given as to the compliance with any regulations. Interested purchasers should satisfy themselves with regard to these matters.

**Important:**

You may download, store and use the material for your own personal use and research. You may not republish, re transmit, redistribute or otherwise make the material available to any party or make the same available on any website, online service or bulletin board of your own or of any other party or make the same available in hard copy or in any other media without the website owner's express prior written consent. Bannerman Burke Properties Ltd copyright must remain on all reproductions of material taken from this website.