

Luxury+Prestige

# HARBOUR HOUSE

11 ELMS AVENUE, LILLIPUT, POOLE, BH14 8EE















































# TAKE A STEP INSIDE



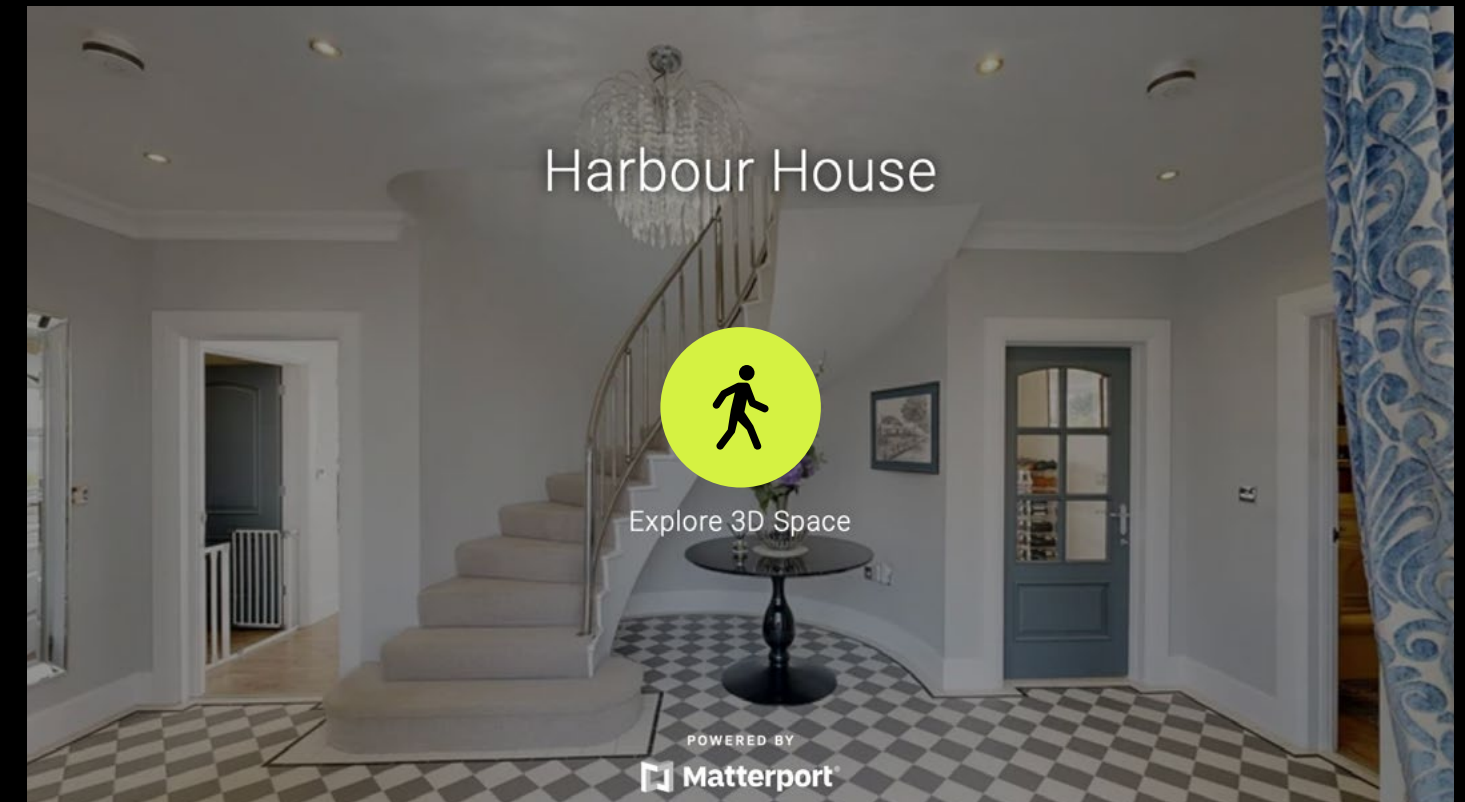
Simply click on the thumbnail above to let one of our team give you a guided tour of the highlights.

If you are longing for a more in-depth explore at your own pace, then head across the page to our fully interactive 3D tour.

**vimeo**

## Can't wait to view in person?

All of our properties feature a professionally produced one minute video, personally introduced by a member of our team as well as a fully interactive 3D tour.



Simply click on the thumbnail above to take a step inside and explore this beautiful home.

This fully immersive experience allows you to 'click and drag' your way through the property at your own pace. It is best viewed on a desktop screen or in landscape mode on your smartphone or tablet.

**Matterport**



# Floorplan

Harbour House, 11 Elms Avenue,  
Lilliput, Poole, BH14 8EE

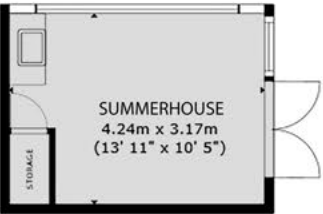
## GROSS INTERNAL AREA

House:	
Ground Floor:	2,008 sq. ft / 187 m²
First Floor:	1,439 sq. ft / 134 m²
Garage:	322 sq. ft / 30 m²
Total:	3,769 sq. ft / 351 m²

Summerhouse: 145 sq. ft / 13 m²

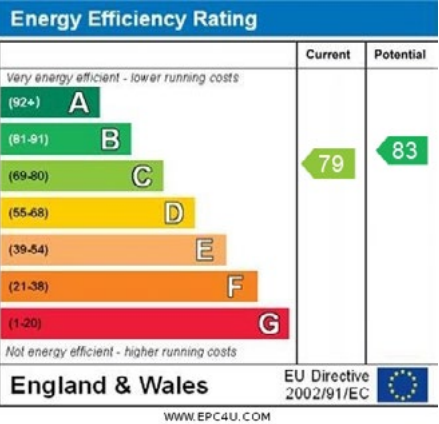
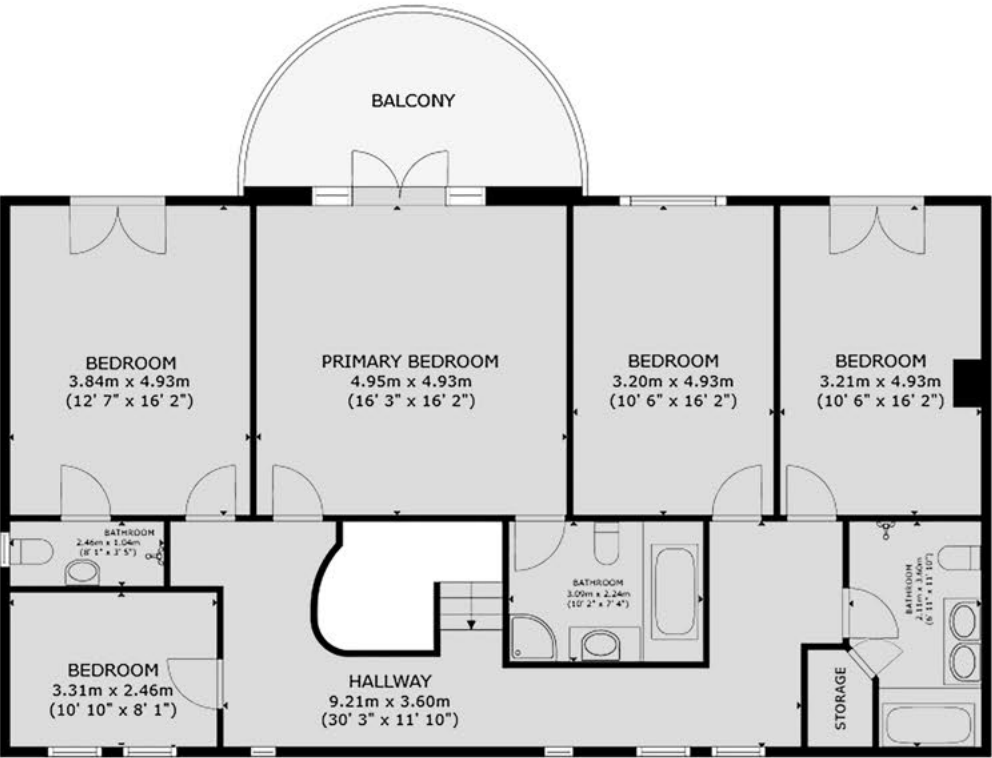
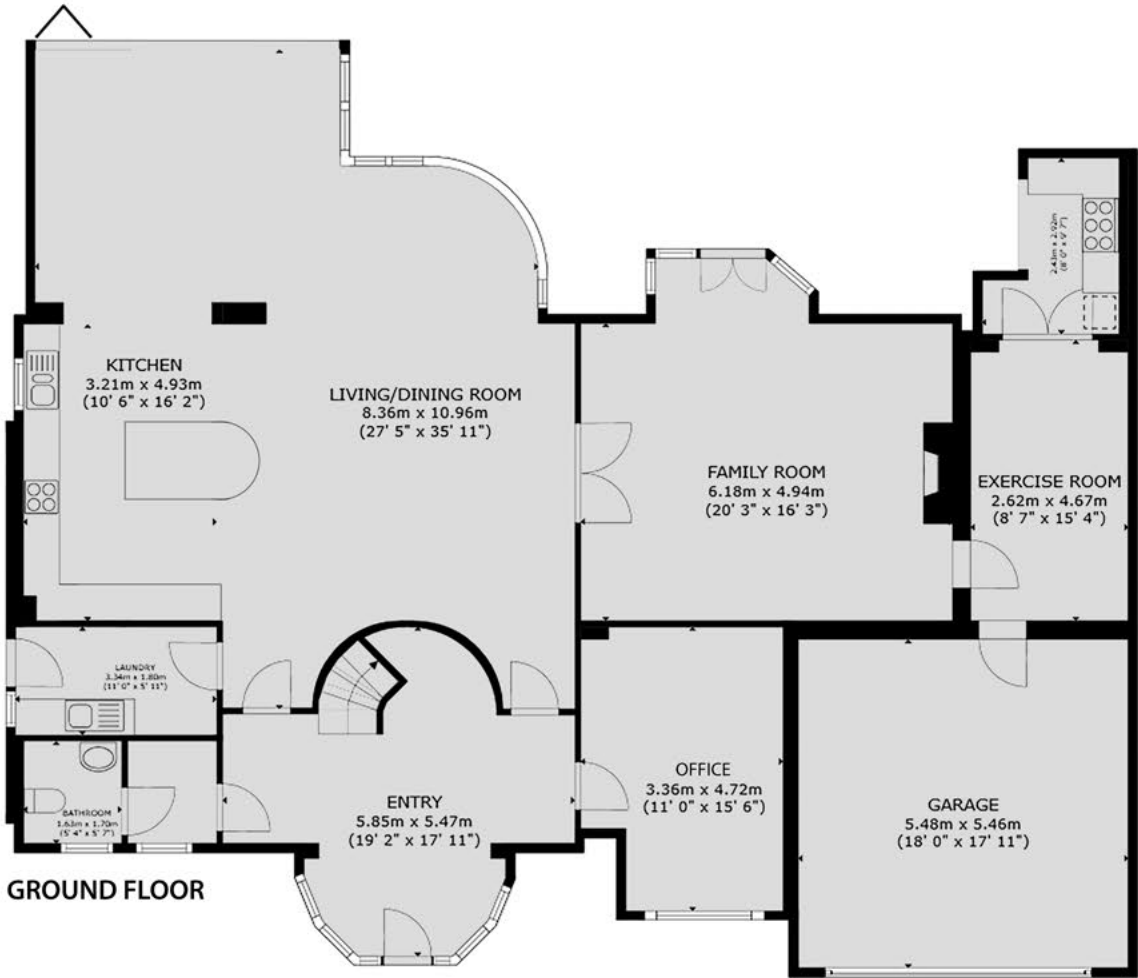
Overall Total: 3,914 sq. ft / 364 m²

Sizes and dimensions are approximate, actual may vary.



SUMMERHOUSE\*

\*NOT SHOWN IN ACTUAL LOCATION OR ORIENTATION





# Summary

Harbour House is ideal for anyone looking to make a lifestyle move to a luxury house on the water.

It was originally built by one of the area's leading luxury house builders but it has been the subject of many improvements by the current owners, for it has been a treasured home. One of the stand out features is the wonderful open plan kitchen family room which is zoned for the luxury hand painted kitchen complete with centre island and breakfast bar, informal dining and comfortable sitting, all benefitting from what must be one of the best view points in the road. There are bi-fold doors connecting to the magnificent private sun terrace which has a well equipped outdoor kitchen and steps down to the lawn. Elsewhere there is a formal sitting room, a small gymnasium, a home office and the reception hall has a stunning radius staircase with a galleried landing. On the first floor there are five bedrooms and three bathrooms and the primary bedroom benefits from a private sun balcony. Harbour House occupies an exceptional plot with a wide frontage to the water and a substantial jetty, not to mention a sun room and separate store. Add a gated driveway and an integral double garage to complete this picture perfect property.

# Details

Guide Price:	£4,300,000
Tenure:	Freehold
Lease Length:	N/A
Maintenance:	N/A
Ground Rent:	N/A* * Ground Rents can increase over time and advice should always be sought from your solicitor before exchange of contracts.
Stamp Duty:	Main Home           £429,250** Additional Home   £644,750** ** based on guide price, correct as at 14.04.25
Local Authority:	BCP Council
Council Tax:	Band H 2025/2026           £4,509.88pa*** *** Amount shown is for a main home, please seek advice for additional home.
Services:	Mains gas, electricity, water and drainage



# Key features

- + Direct water frontage
- + Exceptional views across the Blue Lagoon and Poole Harbour
- + Wide plot and great garden
- + Private sun terrace and outdoor kitchen
- + Five bedrooms, three bathrooms
- + Wonderful open plan kitchen family room
- + Formal sitting & home office
- + Beautiful decor
- + Over just two storeys
- + Vendors suited



# Our team



**Steve Isaacs**  
Director

07970 878106  
steve@luxuryandprestige.com



**David Chissell**  
Director

07795 835647  
david@luxuryandprestige.com



**Harriet Towing**  
Head of Sales

07809 908718  
harriet@luxuryandprestige.com



**Adrianna Ciereszko**  
Photographer

01202 007373  
adrianna@luxuryandprestige.com



**Ryan Horan**  
Land & New Homes

07512 196688  
ryan@luxuryandprestige.com



**Thomas Powner**  
Residential Sales

07437 491094  
tom@luxuryandprestige.com



**Asia Roberston**  
Social Media Manager

01202 007373  
asia@luxuryandprestige.com



**Valentina Morana**  
Residential Sales

07366 799790  
valentina@luxuryandprestige.com



**Joanne Bound**  
Search Agent

01202 007373  
jbound@luxuryandprestige.com



# Get in touch

In person:	28A Haven Road Canford Cliffs Poole BH13 7LP
By phone:	01202 007373
By email:	info@luxuryandprestige.com
Online:	luxuryandprestige.com
Facebook:	facebook.com/luxuryandprestige
Instagram:	@luxuryprestigerealty
Property ref:	1049
Published:	April 2025



**Important notice**  
Luxury and Prestige Realty Ltd, its clients and any joint agents give notice that 1: They are not authorised to make or give any representations or warranties in relation to the property either here or elsewhere, either on their own behalf or on behalf of their client otherwise. They assume no responsibility for any statement that may be made in these particulars. These particulars do not form part of any offer or contract and must not be relied upon as statements or representations of fact. 2: Any areas, measurements or distances are approximate. The text, photographs and plans are for guidance only and are not necessarily comprehensive. It should not be assumed that the property has all necessary planning, building regulation or other consents and Luxury and Prestige have not tested any services, equipment or facilities. Purchasers must satisfy themselves by inspection or otherwise.



# Luxury+Prestige

[luxuryandprestige.com](http://luxuryandprestige.com)