

Luxury+Prestige

SUNRISE

34 WHITECLIFF ROAD, WHITECLIFF, POOLE, BH14 8DX





















TAKE A STEP INSIDE



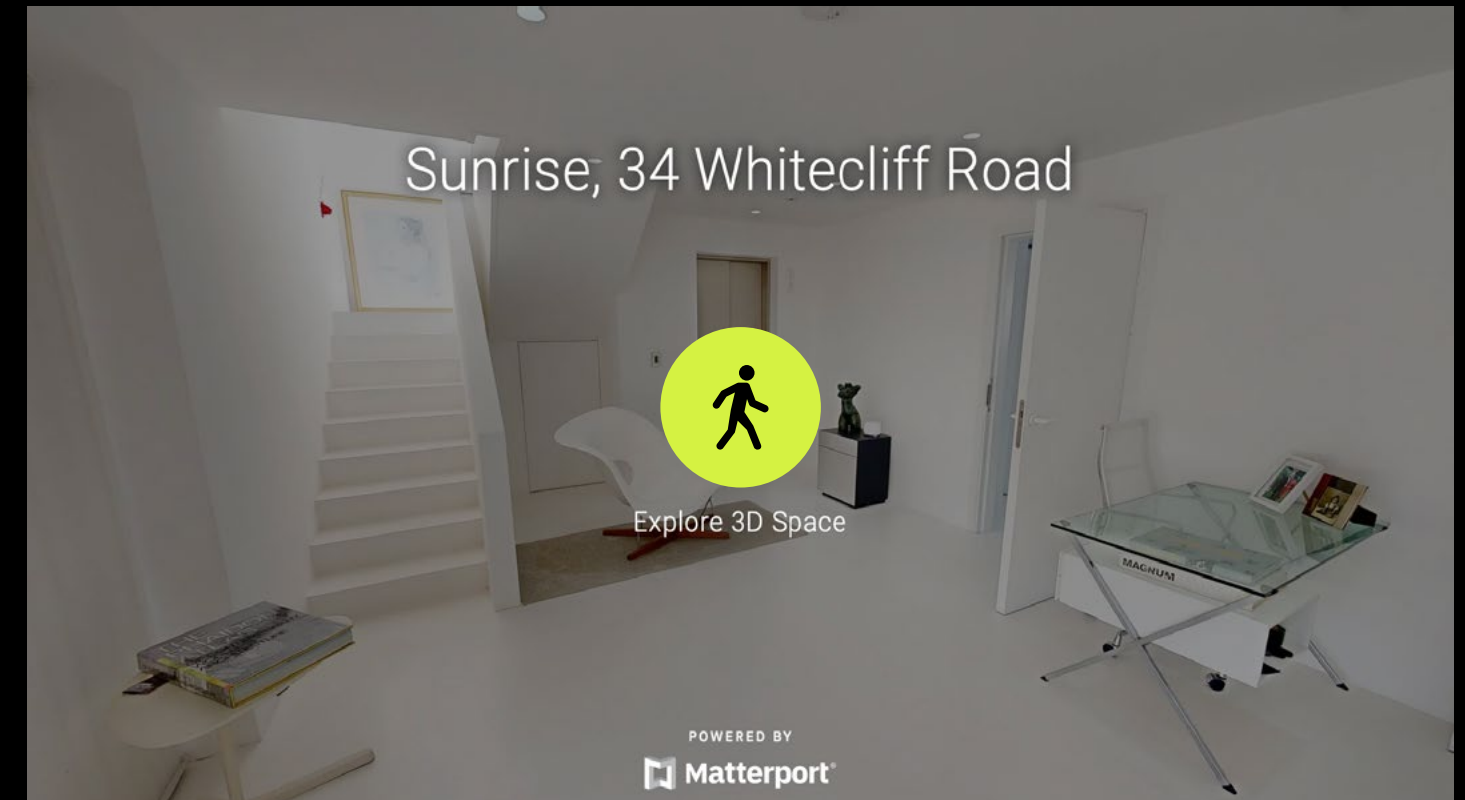
Simply click on the thumbnail above to let one of our team give you a guided tour of the highlights.

If you are longing for a more in-depth explore at your own pace, then head across the page to our fully interactive 3D tour.

vimeo

Can't wait to view in person?

All of our properties feature a professionally produced one minute video, personally introduced by a member of our team as well as a fully interactive 3D tour.



Simply click on the thumbnail above to take a step inside and explore this beautiful home.

This fully immersive experience allows you to 'click and drag' your way through the property at your own pace. It is best viewed on a desktop screen or in landscape mode on your smartphone or tablet.

Matterport™

Floorplan

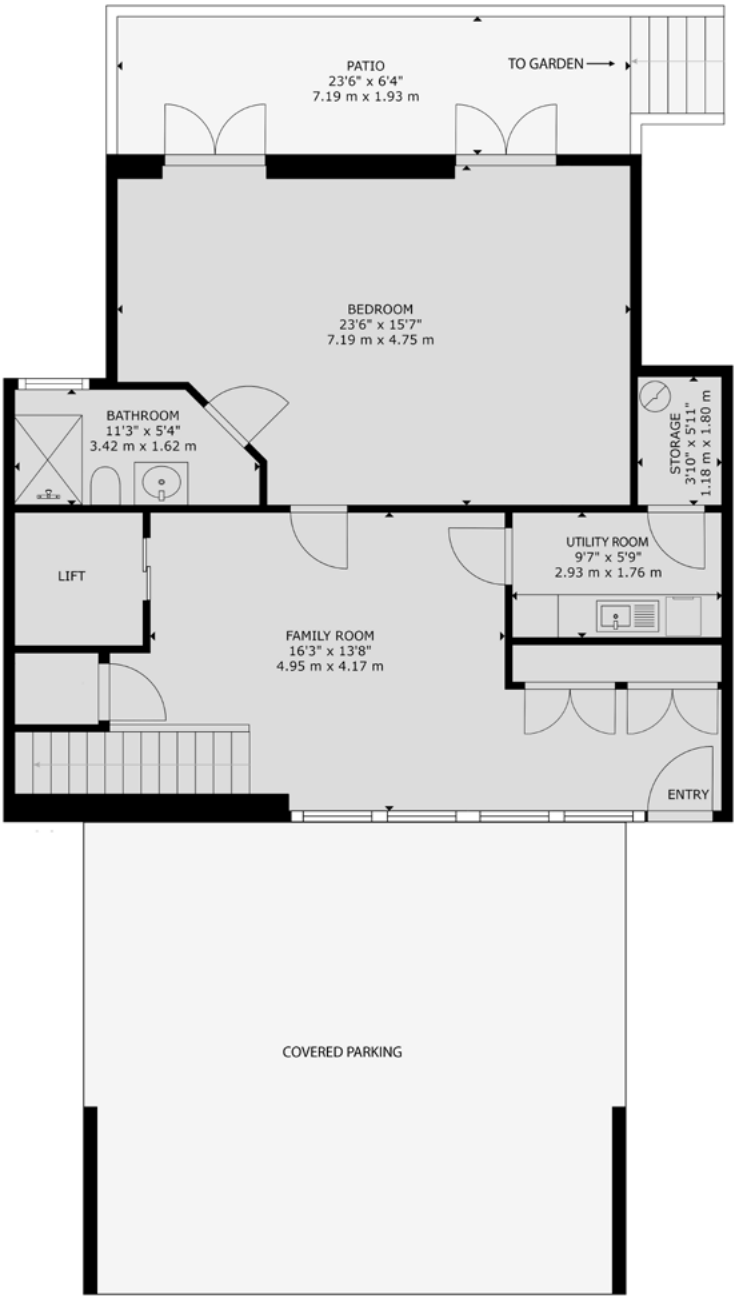
Sunrise, 34 Whitecliff Road,
Whitecliff, Poole, BH14 8DX

GROSS INTERNAL AREA

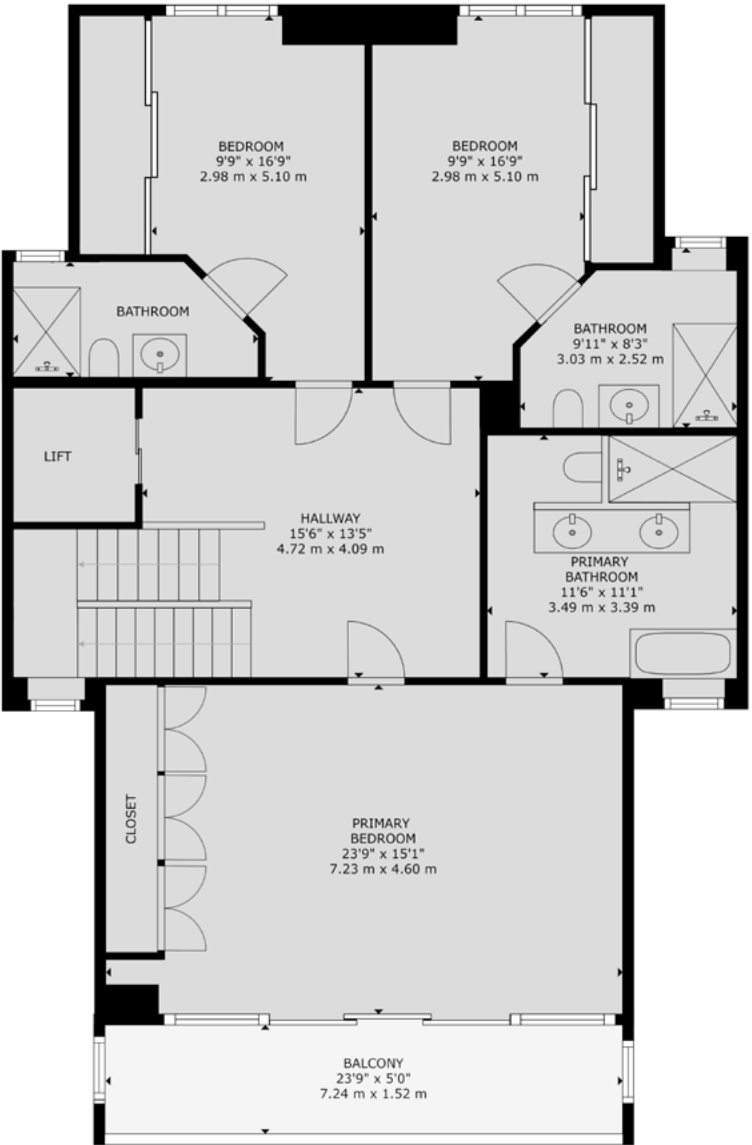
House:
Ground Floor: 882 sq. ft / 82 m²
First Floor: 1,262 sq. ft / 117 m²
Second Floor: 1,215 sq. ft / 113 m²

Overall Total: 3,359 sq. ft / 312 m²

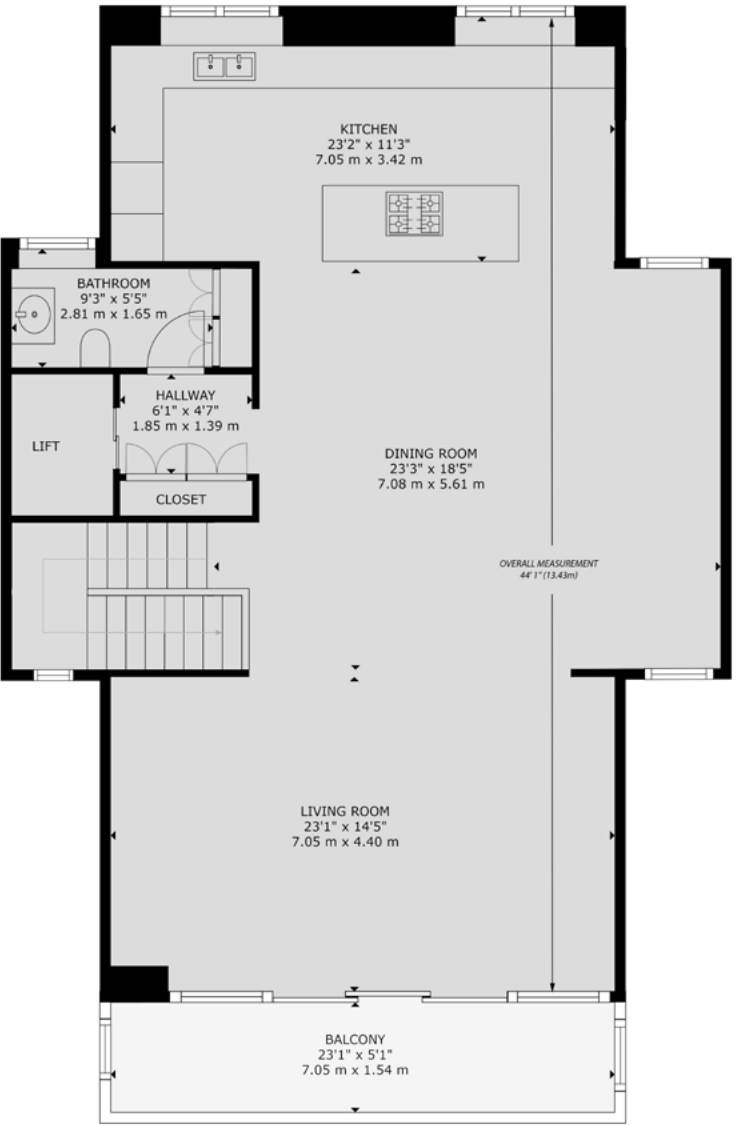
Sizes and dimensions are approximate, actual may vary.



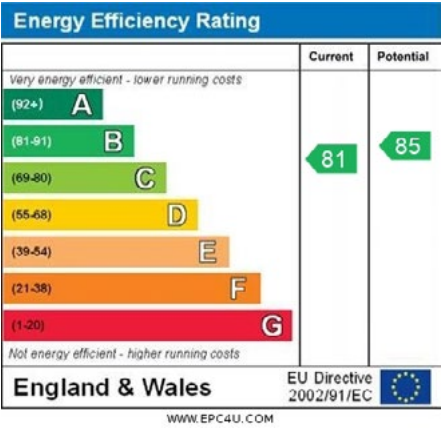
GROUND FLOOR



FIRST FLOOR



SECOND FLOOR



Summary

Sunrise is one of three stunning contemporary homes tucked away in an exclusive gated development overlooking Whitecliff Park and Poole Harbour beyond.

The built form extends to just over 3,350 square feet meaning there is space in abundance and the well planned accommodation is laid out over three floors, all of which are accessed via a private lift. There is a huge open plan living area on the top floor benefiting from harbour views which is zoned for kitchen, informal dining and relaxed living, that connects to a private sun balcony.

There are four bedrooms in total, each with dedicated en suite facilities, the most impressive of which is the primary bedroom on the first floor complete with its own full width sun balcony. The interior is super contemporary with an exceptional standard of finish.

There is lots of white wall space which would make for a perfect setting for stunning artwork as well as a wonderful backdrop for contemporary classic and high design furniture. The high end specification includes programmable lighting and under floor heating and with amenities including a boat club and a waterside brasserie nearby this is the quintessential lifestyle home.

Details

Guide Price:	£1,795,000		
Tenure:	Freehold		
Lease Length:	N/A		
Maintenance:	N/A		
Ground Rent:	N/A*		
	* Ground Rents can increase over time and advice should always be sought from your solicitor before exchange of contracts.		
Stamp Duty:	Main Home	£129,150**	
	Additional Home	£218,900**	
	** based on guide price, correct as at 28.05.25		
Local Authority:	BCP Council		
Council Tax:	Band G		
	2025/2026	£3,758.23pa***	
	*** Amount shown is for a main home, please seek advice for additional home.		
Services:	Mains gas, electricity, water and drainage		

Key features

- + **Stunning lifestyle home**
- + **Beautiful harbour views**
- + **Part of a gated community**
- + **Approximately 3,350 square feet**
- + **Lift to all floors**
- + **Four bedrooms, four bathrooms**
- + **Cool & contemporary interior**
- + **Opposite Whitecliff Park**
- + **Convenient for boat club and nearby bistro**
- + **Open plan living**

Our team



Steve Isaacs
Director

07970 878106
steve@luxuryandprestige.com



David Chissell
Director

07795 835647
david@luxuryandprestige.com



Harriet Towing
Head of Sales

07809 908718
harriet@luxuryandprestige.com



Adrianna Ciereszko
Photographer

01202 007373
adrianna@luxuryandprestige.com



Ryan Horan
Land & New Homes

07512 196688
ryan@luxuryandprestige.com



Thomas Powner
Residential Sales

07437 491094
tom@luxuryandprestige.com



Asia Roberston
Social Media Manager

07484 719645
asia@luxuryandprestige.com



Valentina Morana
Marketing Assistant

01202 007373
valentina@luxuryandprestige.com



Joanne Bound
Search Agent

01202 007373
jbound@luxuryandprestige.com

Get in touch

In person:	28A Haven Road Canford Cliffs Poole BH13 7LP
By phone:	01202 007373
By email:	info@luxuryandprestige.com
Online:	luxuryandprestige.com
Facebook:	facebook.com/luxuryandprestige
Instagram:	@luxuryprestigerealty
Property ref:	1006
Published:	January 2025



Important notice
Luxury and Prestige Realty Ltd, its clients and any joint agents give notice that 1: They are not authorised to make or give any representations or warranties in relation to the property either here or elsewhere, either on their own behalf or on behalf of their client otherwise. They assume no responsibility for any statement that may be made in these particulars. These particulars do not form part of any offer or contract and must not be relied upon as statements or representations of fact. 2: Any areas, measurements or distances are approximate. The text, photographs and plans are for guidance only and are not necessarily comprehensive. It should not be assumed that the property has all necessary planning, building regulation or other consents and Luxury and Prestige have not tested any services, equipment or facilities. Purchasers must satisfy themselves by inspection or otherwise.

Luxury+Prestige

luxuryandprestige.com