



Apartment 23 Radcliffe Court

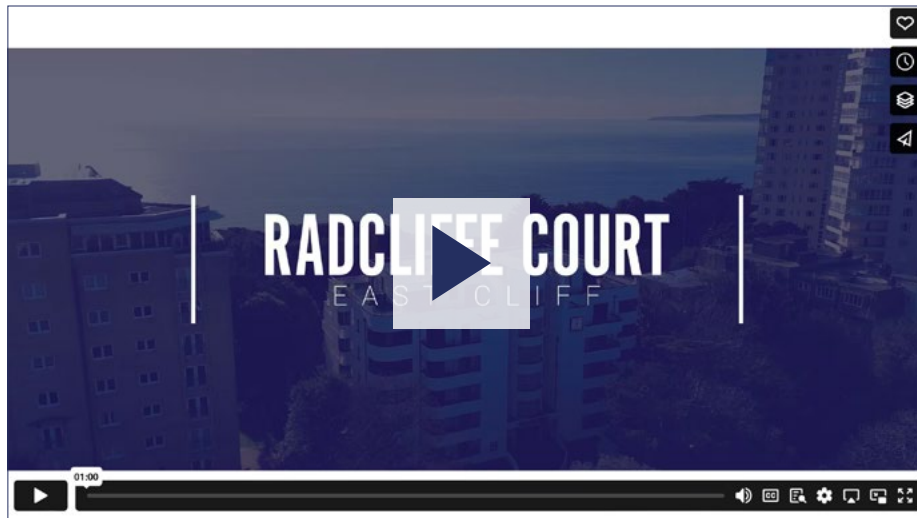
51 Manor Road, East Cliff, Bournemouth, Dorset, BH1 3FH



LUXURY &
PRESTIGE
Exclusive Properties

Can't wait to view in person?

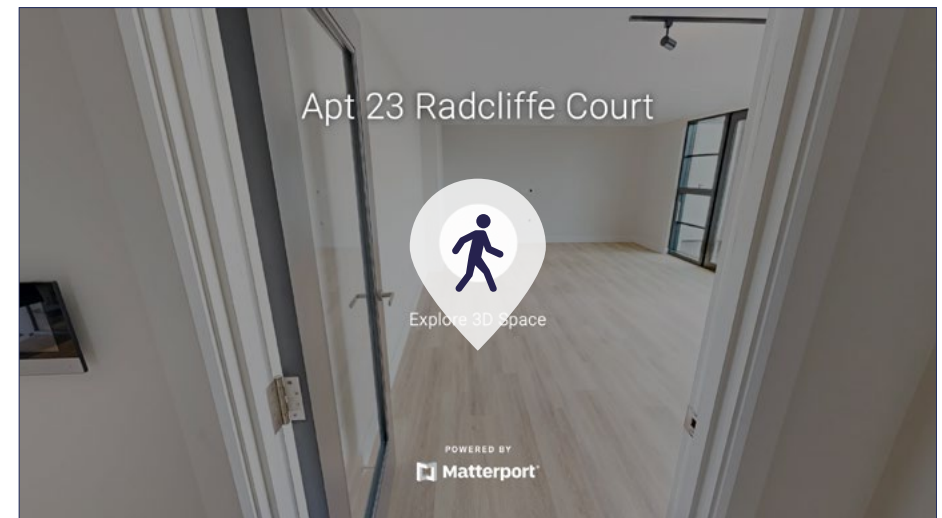
All of our properties feature a professionally produced one minute video, personally introduced by a member of our team as well as a fully interactive 3D tour.



Simply click on the thumbnail above to let one of our team give you a guided tour of the highlights.

If you are longing for a more in-depth explore at your own pace, then head across the page to our fully interactive 3D tour.

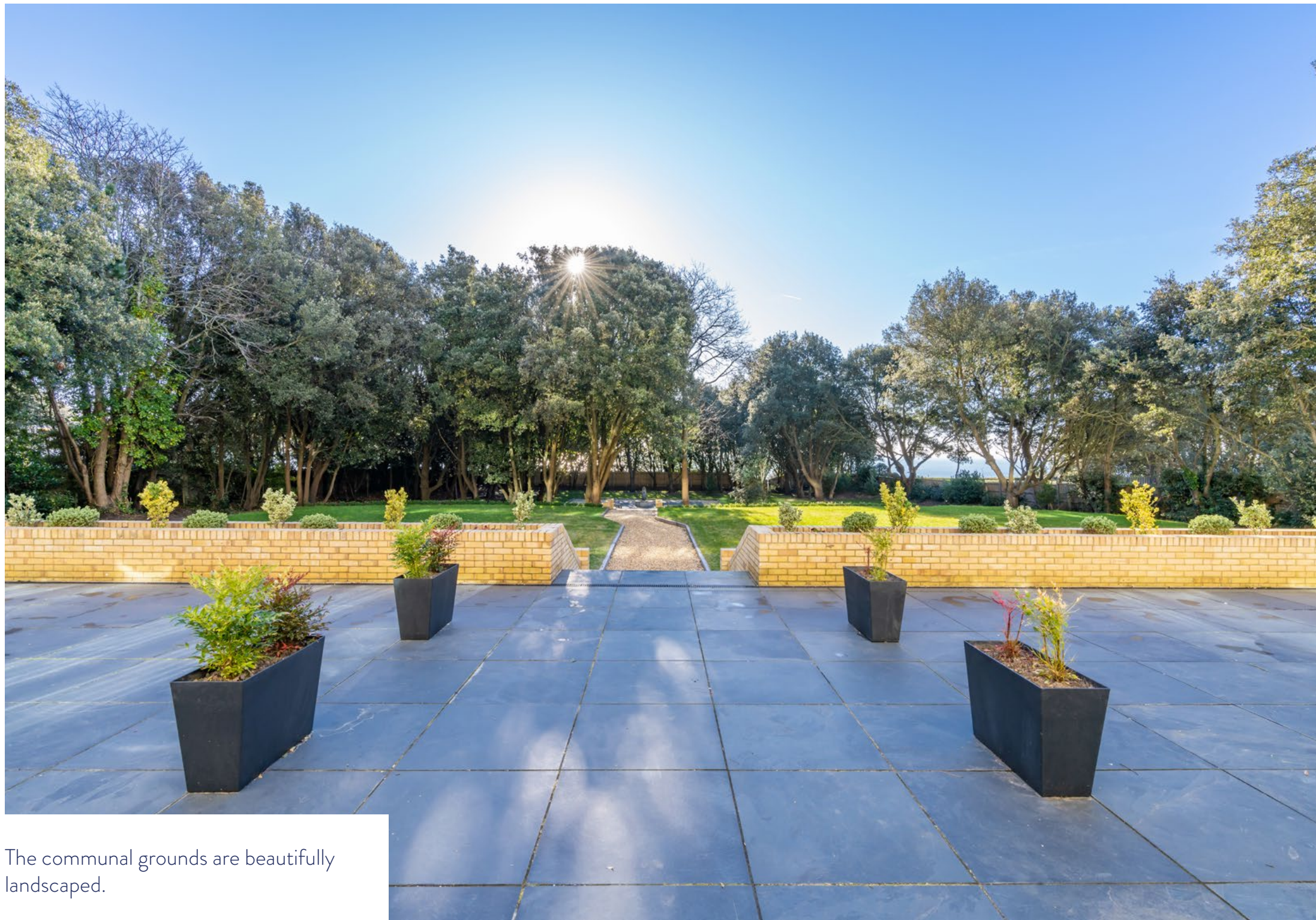
vimeo



Simply click on the thumbnail above to take a step inside and explore this beautiful home.

This fully immersive experience allows you to 'click and drag' your way through the property at your own pace. It is best viewed on a desktop screen or in landscape mode on your smartphone or tablet.

Matterport™



The communal grounds are beautifully landscaped.



A variety of apartments benefit from stunning sea views.



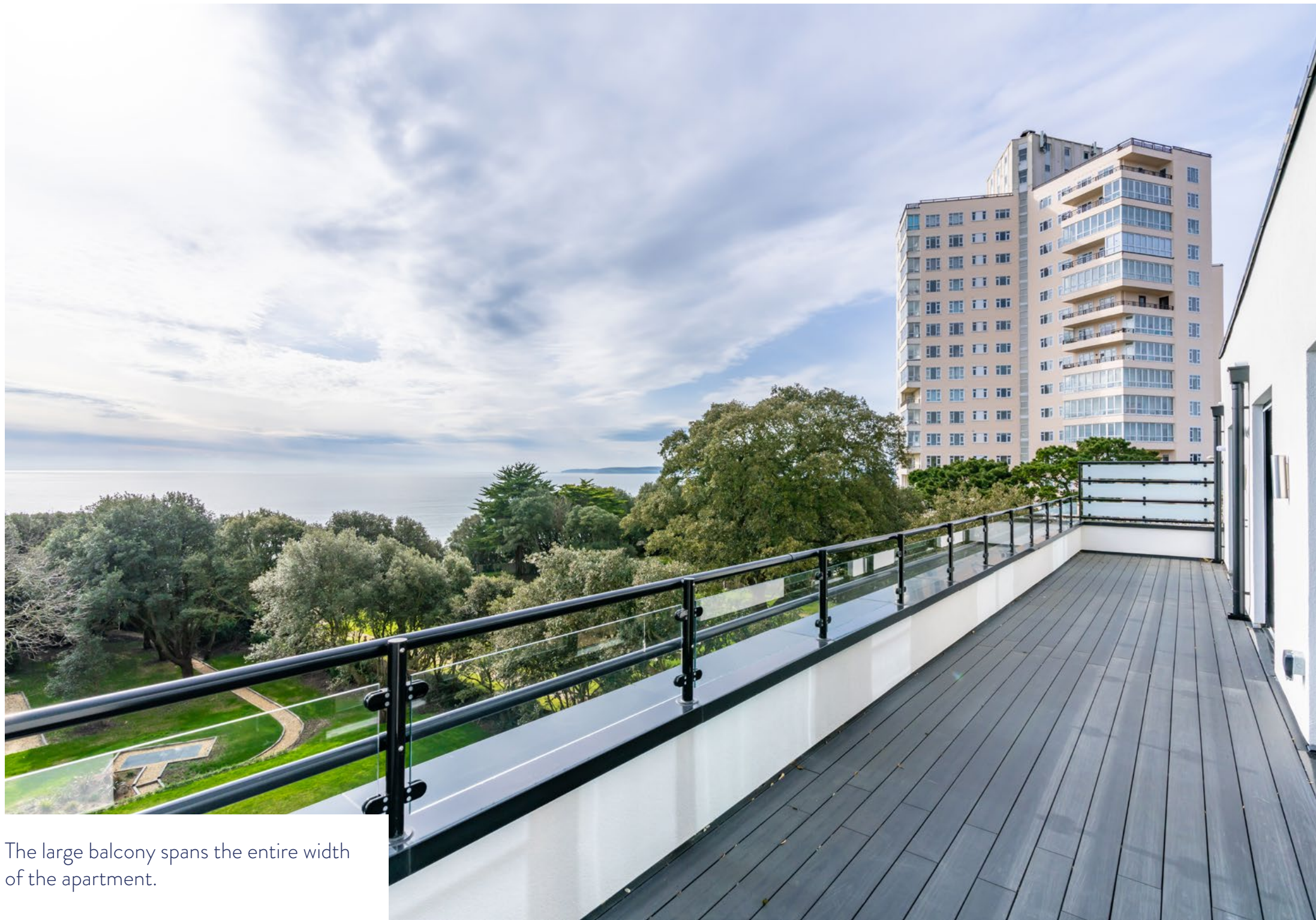
The open plan living space has direct access to a large balcony.



The apartments are cleverly laid out to make the most of the space available.





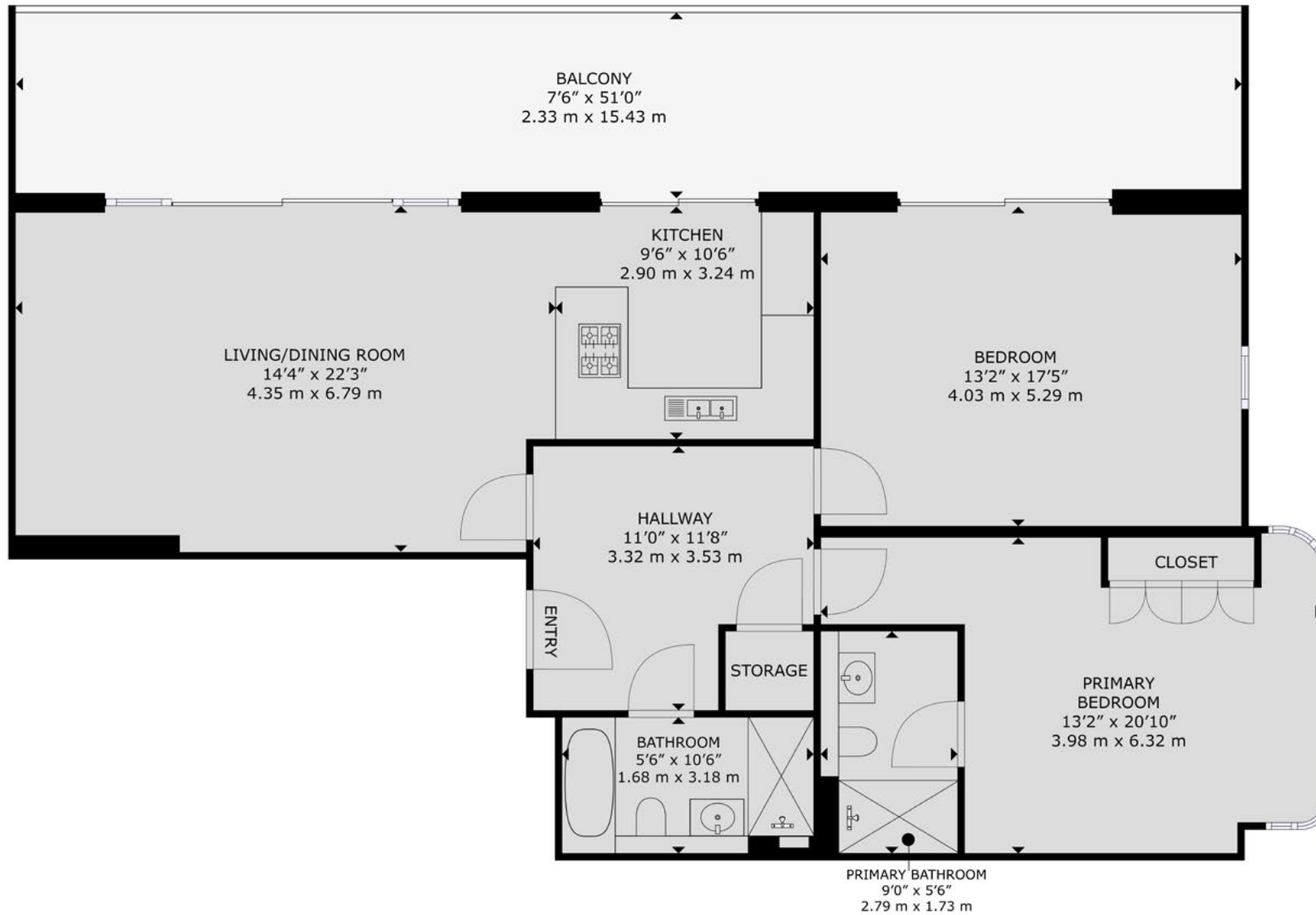


The large balcony spans the entire width of the apartment.



The cliff top and beaches below are within easy reach.

Apartment 23 Radcliffe Court, 51 Manor Road, Bournemouth, BH1 3FH



GROSS INTERNAL AREA
FLOOR PLAN: 1,119 sq. ft, 103 m²
EXCLUDED AREA: BALCONY: 386 sq. ft, 35 m²
SIZES AND DIMENSIONS ARE APPROXIMATE, ACTUAL MAY VARY.

Summary

Radcliffe Court is a stylishly designed Art Deco apartment block built to an exceptional standard. This new build development offers 26 luxury homes with a large selection of apartments enjoying panoramic sea views.

The development comprises a range of 2 and 3 bedroom apartments as well as two duplex apartments and a penthouse. All the apartments benefit from their own private outside areas along with landscaped communal grounds with a water feature and seating area to be enjoyed by all the residents. There is also a footpath that leads you directly to the cliff top providing easy access to Bournemouth's award winning beaches below. All the apartments benefit from secure underground parking along with lift access to all floors. Radcliffe Court is located on a tree lined premier road on Bournemouth's beautiful East Cliff, the town centre is within walking distance as well national and local transport links.

- Brand new fourth floor apartment
- South facing balcony with sea views
- Two double bedrooms
- Two tastefully finished bathrooms
- Spacious open plan living space
- Range of fitted appliances
- Secure underground parking with bike storage
- Beautifully landscaped communal grounds
- Luxury art deco new build development
- Share of freehold

Details

Guide Price:	£950,000
Tenure:	Leasehold & Share of Freehold
Lease Length:	125 years
Maintenance:	Between £2,000-£2,500
Ground Rent:	A peppercorn* * Ground Rents can increase over time and advice should always be sought from your solicitor before exchange of contracts.
Stamp Duty:	Main Home £35,250** Additional Home £64,750** ** based on guide price
Council Tax:	Band TBC 2023/2024 £x,xxx.xxpa
EPC:	



LUXURY & PRESTIGE

Exclusive Properties



Steve Isaacs
Director
07979 878106
steve@luxuryandprestige.co.uk



Harriet Towing
Head of Sales
07809 908718
harriet@luxuryandprestige.co.uk



Thomas Powner
Residential Sales
07437 491094
tom@luxuryandprestige.co.uk



Asia Roberston
Social Media Manager
07484 719645
asia@luxuryandprestige.co.uk



Valentina Morana
Marketing Assistant
01202 007373
valentina@luxuryandprestige.co.uk



David Chissell
Director
07795 835647
david@luxuryandprestige.co.uk



Adrianna Ciereszko
Photographer / Marketing Manager
01202 007373
adrianna@luxuryandprestige.co.uk



Ryan Horan
Land & New Homes
07512 196688
ryan@luxuryandprestige.co.uk



Jo Bound
Search Agent
01202 007373
jbound@luxuryandprestige.co.uk

Get In Touch

In Person: 28A Haven Road
Canford Cliffs
Poole
BH13 7LP

By Phone: 01202 007373

By Email: info@luxuryandprestige.co.uk

Online: www.luxuryandprestige.co.uk

Facebook: facebook.com/luxuryandprestige

Instagram: [@luxuryprestigerealty](https://www.instagram.com/luxuryprestigerealty)

Property Ref: 0923



Important notice

Luxury and Prestige Realty Ltd wishes to inform prospective purchasers that we have prepared these sales particulars as a general guide. We have not carried out a detailed survey, nor tested the services, appliances and specific fittings. Room sizes are approximate and rounded; they are taken between internal wall surfaces and therefore include cupboards/shelves etc. Accordingly they should not be relied upon for carpets and furnishings. Formal notice is also given that all fixtures and fittings, carpeting, curtains/blinds and kitchen equipment, whether fitted or not, are deemed removable by the vendor unless specifically itemised within these particulars.