



135-137 Christchurch Road

West Parley, Ferndown, BH22 8TB



LUXURY &
PRESTIGE
Exclusive Properties

Can't wait to view in person?

All of our properties feature a professionally produced one minute video, personally introduced by a member of our team as well as a fully interactive 3D tour.



Simply click on the thumbnail above to let one of our team give you a guided tour of the highlights.

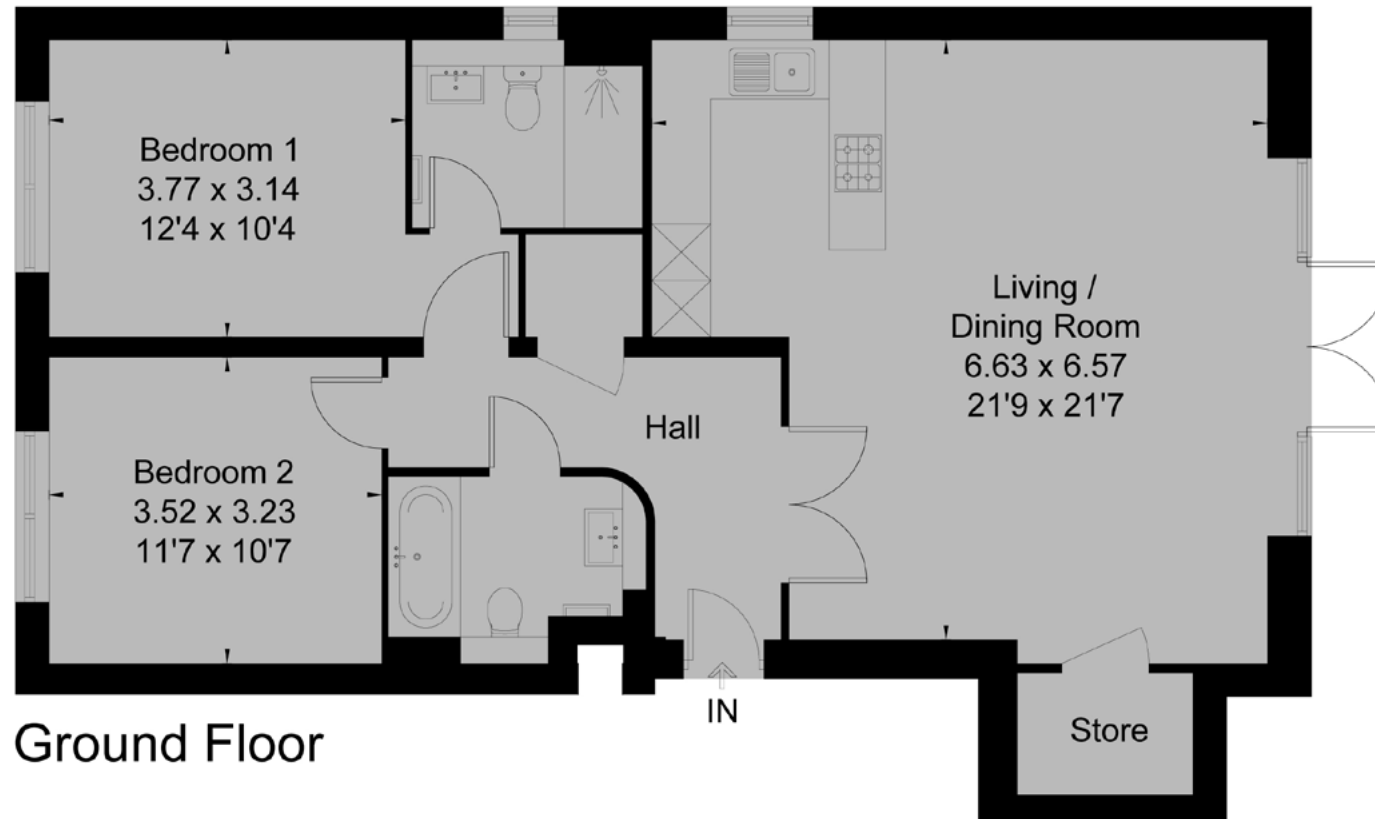
If you are longing for a more in-depth explore at your own pace, then head across the page to our fully interactive 3D tour.

vimeo



Plots 1-6
Six two bedroom apartments

Apartment 1, 135-137 Christchurch Road, Ferndown, BH22 8TB
Approximate Floor Area = 87.7 sq m / 944 sq ft

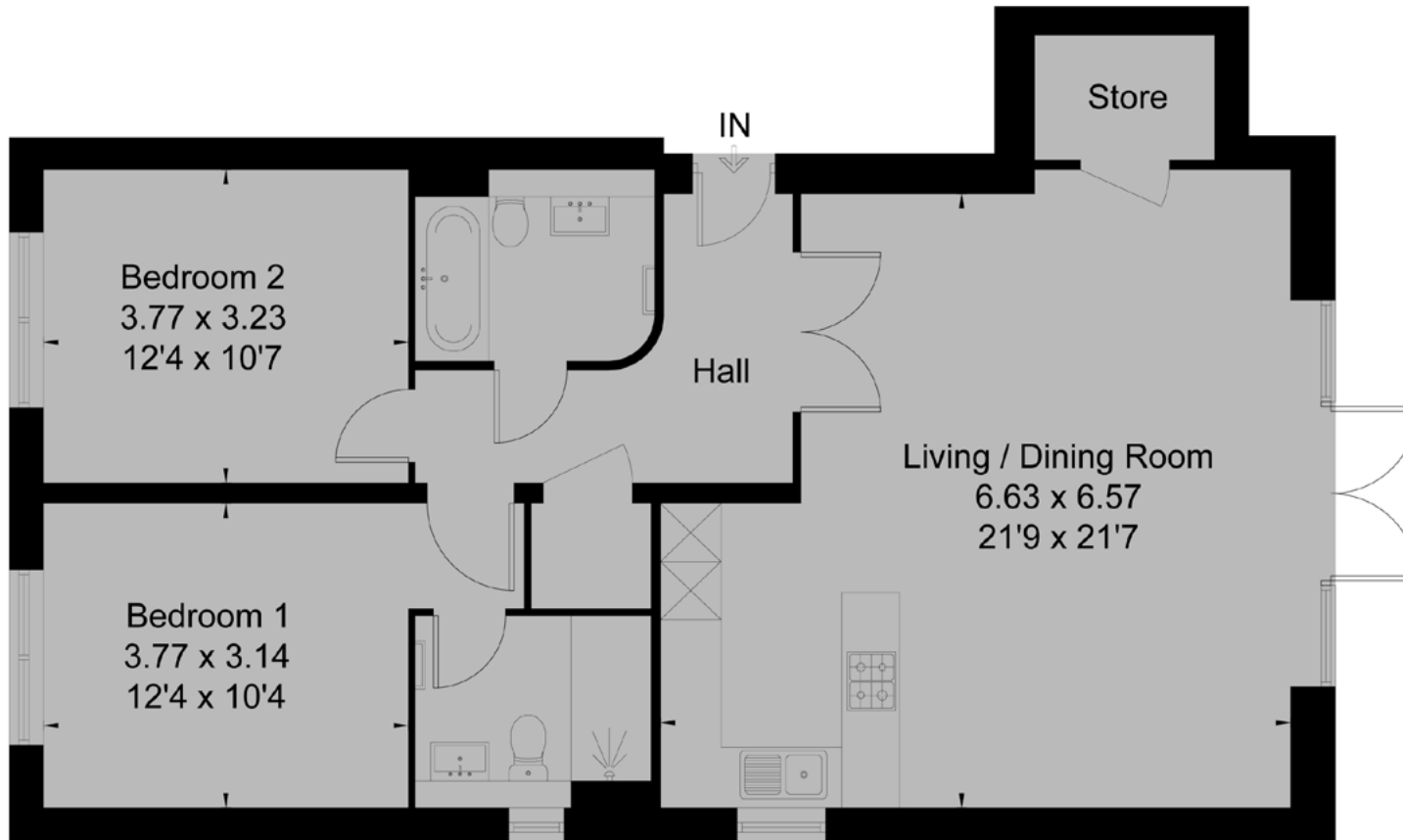


This floor plan has been drawn in accordance with RICS Property Measurement 2nd edition.

All measurements, including the floor area, are approximate and for illustrative purposes only. @fourwalls-group.com #64211

Apartment 2, 135-137 Christchurch Road, Ferndown, BH22 8TB

Approximate Floor Area = 88.2 sq m / 949 sq ft



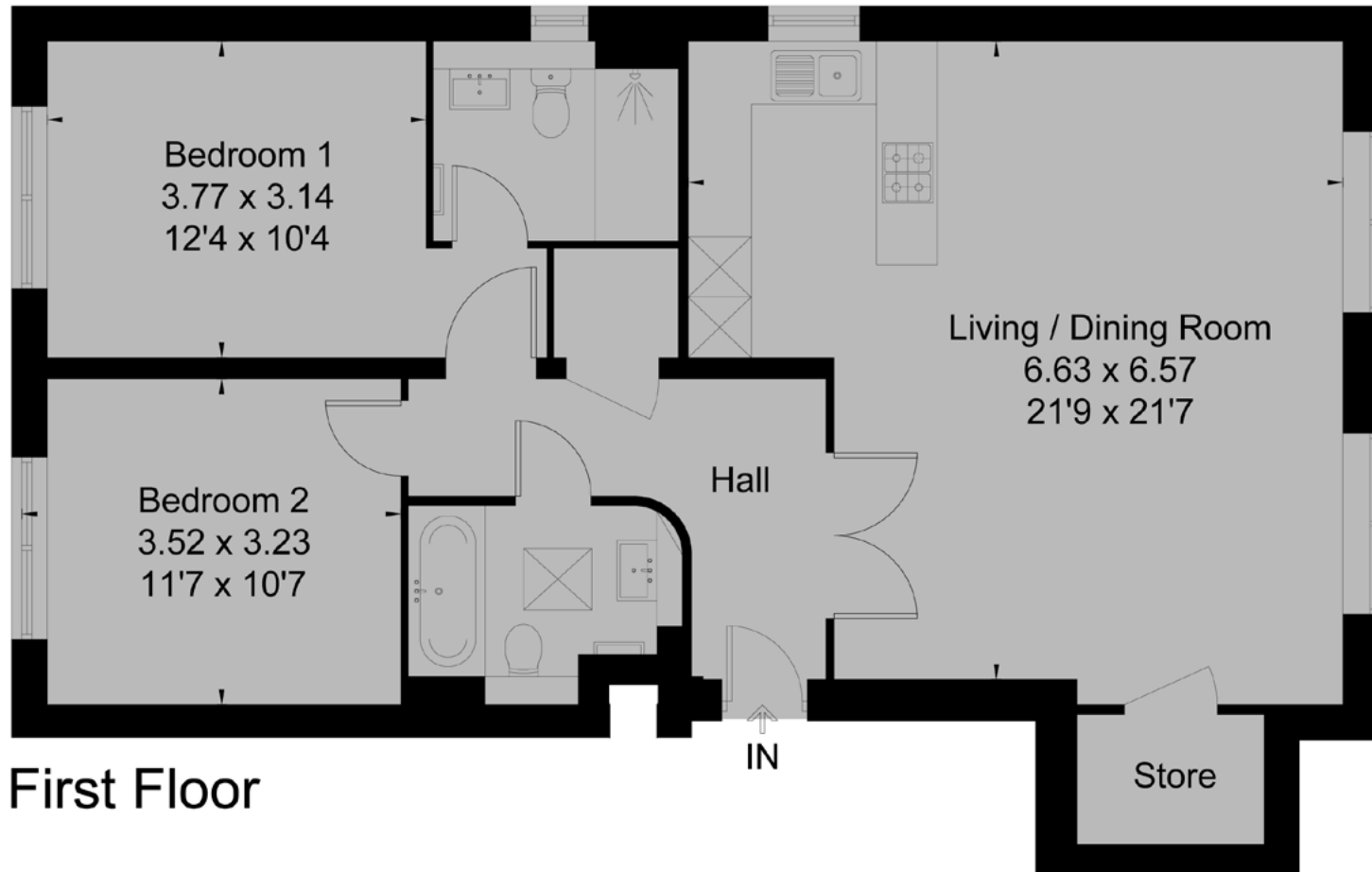
Ground Floor



This floor plan has been drawn in accordance with RICS Property Measurement 2nd edition.

All measurements, including the floor area, are approximate and for illustrative purposes only. @fourwalls-group.com #64211

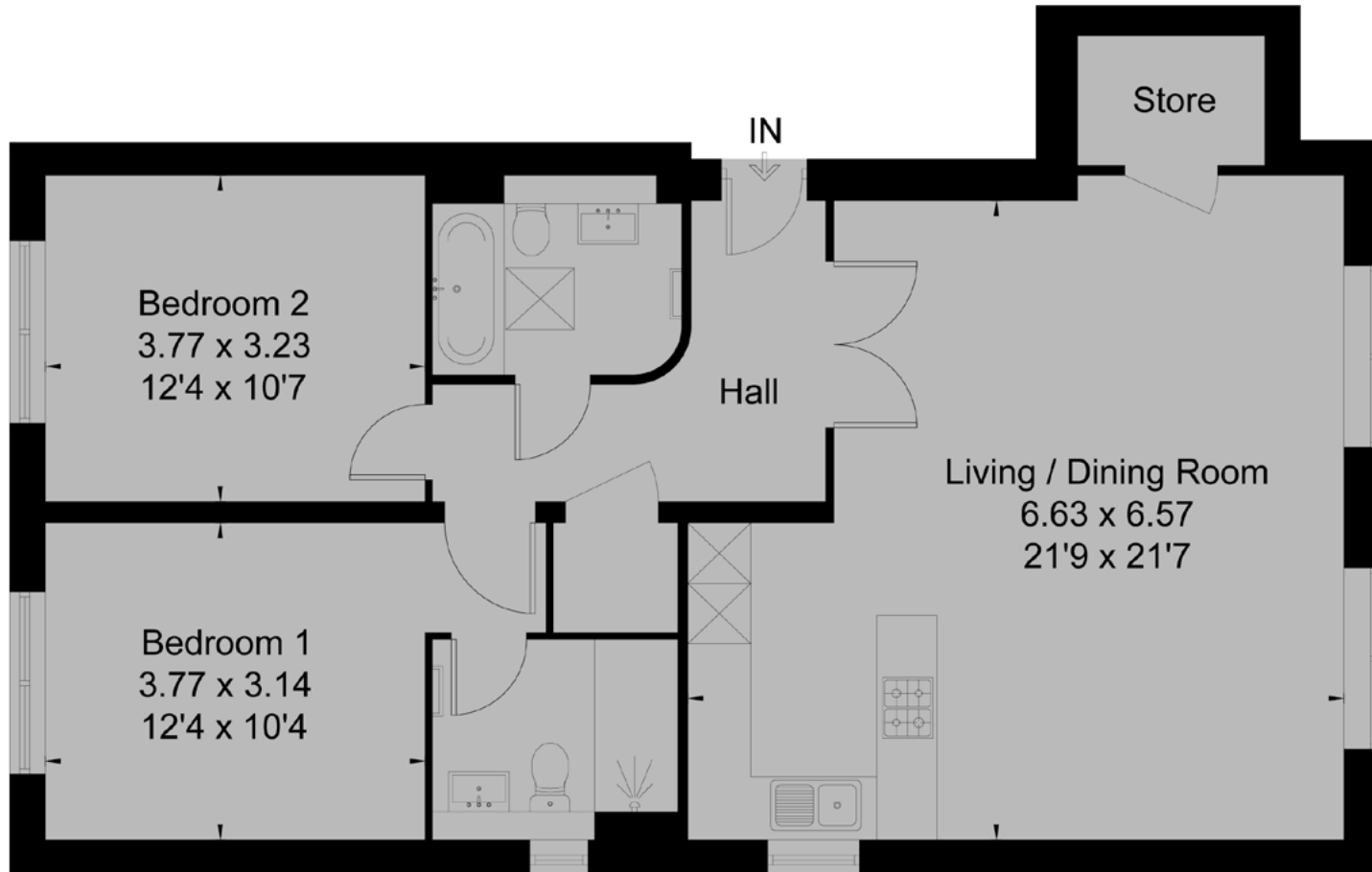
Apartment 3, 135-137 Christchurch Road, Ferndown, BH22 8TB
Approximate Floor Area = 86.4 sq m / 930 sq ft



This floor plan has been drawn in accordance with RICS Property Measurement 2nd edition.

All measurements, including the floor area, are approximate and for illustrative purposes only. @fourwalls-group.com #64211

Apartment 4, 135-137 Christchurch Road, Ferndown, BH22 8TB
Approximate Floor Area = 86.9 sq m / 935 sq ft



First Floor

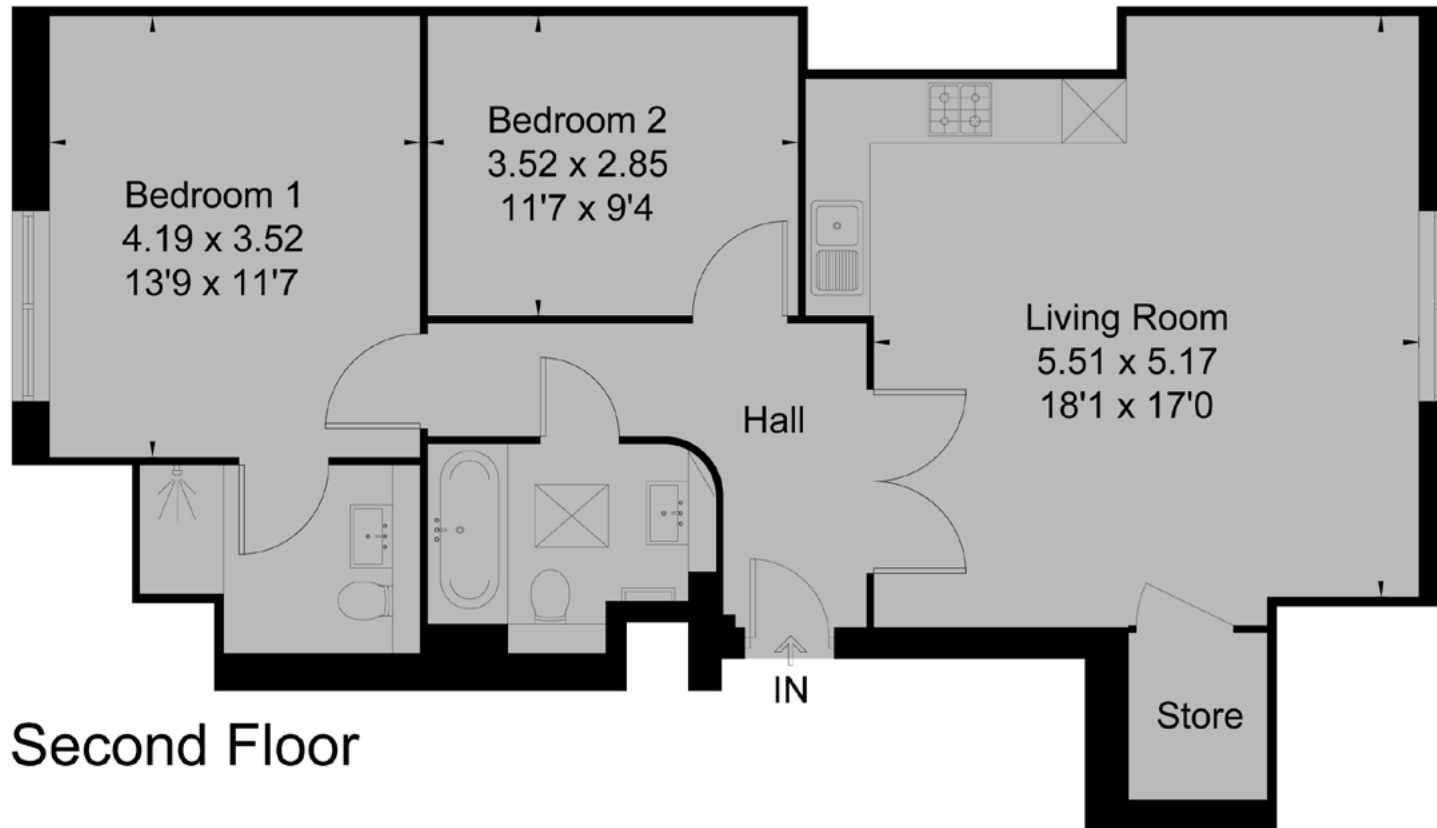


This floor plan has been drawn in accordance with RICS Property Measurement 2nd edition.

All measurements, including the floor area, are approximate and for illustrative purposes only. @fourwalls-group.com #64211

Apartment 5, 135-137 Christchurch Road, Ferndown, BH22 8TB

Approximate Floor Area = 74.6 sq m / 803 sq ft



Second Floor

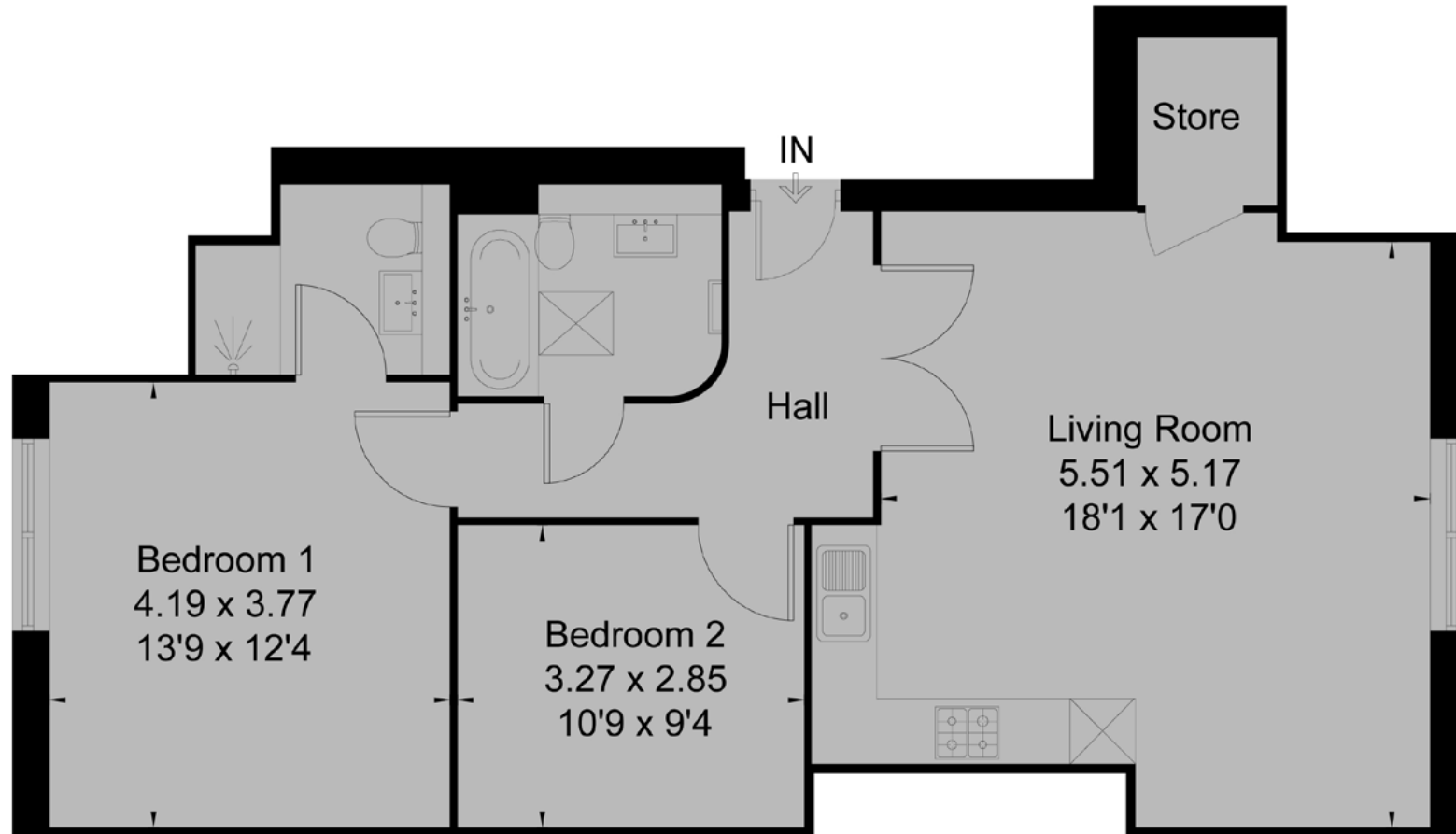


This floor plan has been drawn in accordance with RICS Property Measurement 2nd edition.

All measurements, including the floor area, are approximate and for illustrative purposes only. @fourwalls-group.com #64211

Apartment 6, 135-137 Christchurch Road, Ferndown, BH22 8TB

Approximate Floor Area = 74.1 sq m / 798 sq ft



Second Floor



This floor plan has been drawn in accordance with RICS Property Measurement 2nd edition.

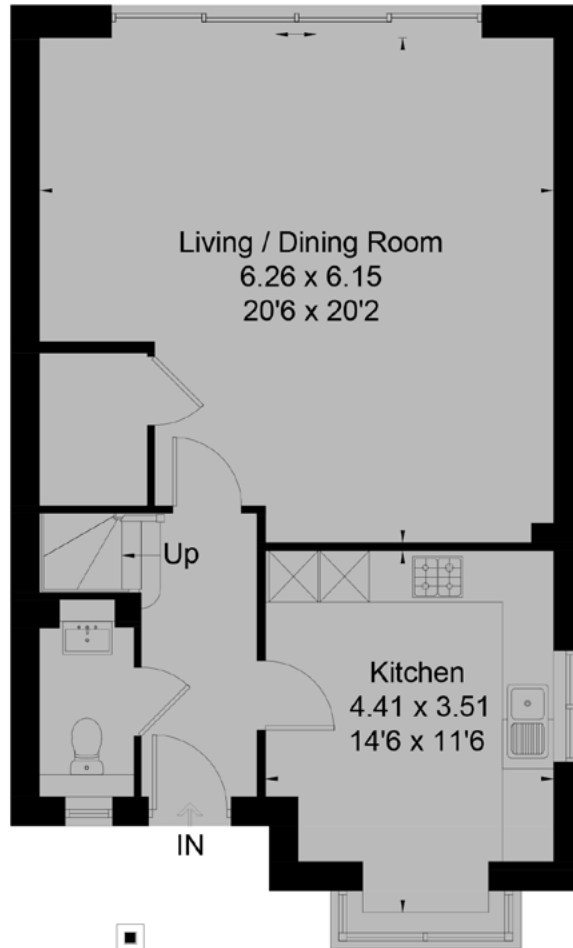
All measurements, including the floor area, are approximate and for illustrative purposes only. @fourwalls-group.com #64211



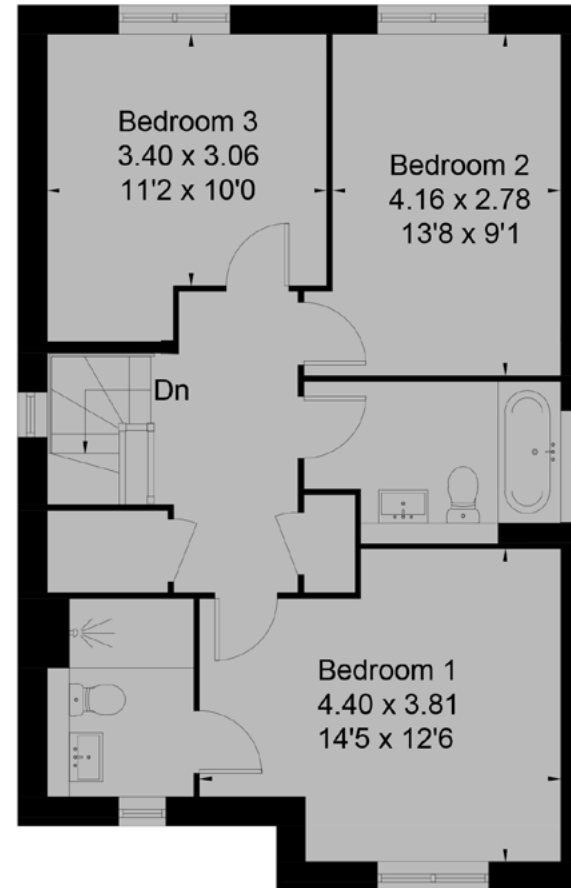
Plot 7
Three bedroom detached house

Plot 7, 135-137 Christchurch Road, Ferndown, BH22 8TB

Approximate Floor Area = 122.9 sq m / 1323 sq ft



Ground Floor



First Floor



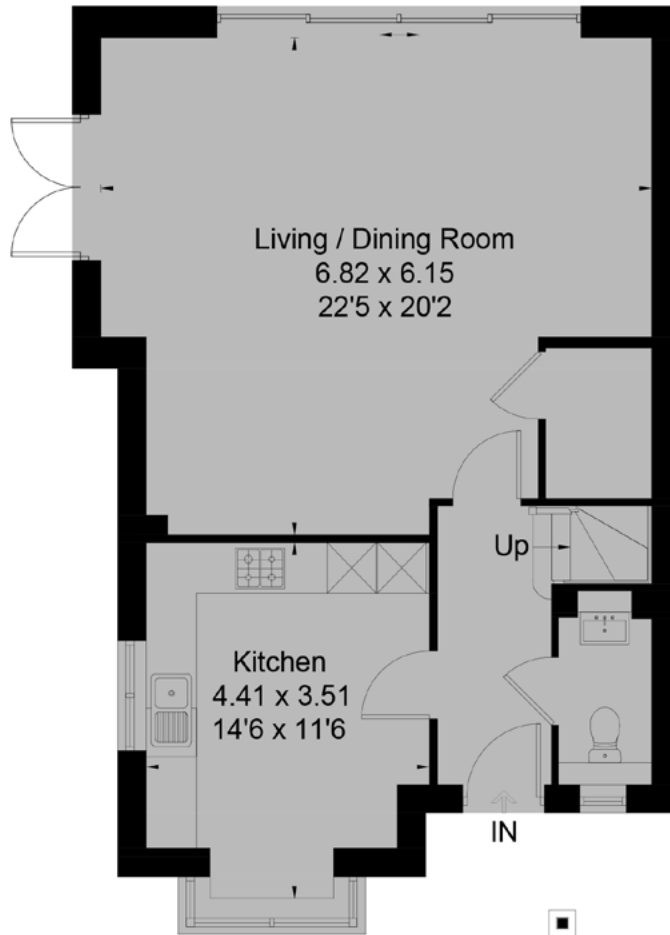
Drawn for illustration and identification purposes only by @fourwalls-group.com #64213



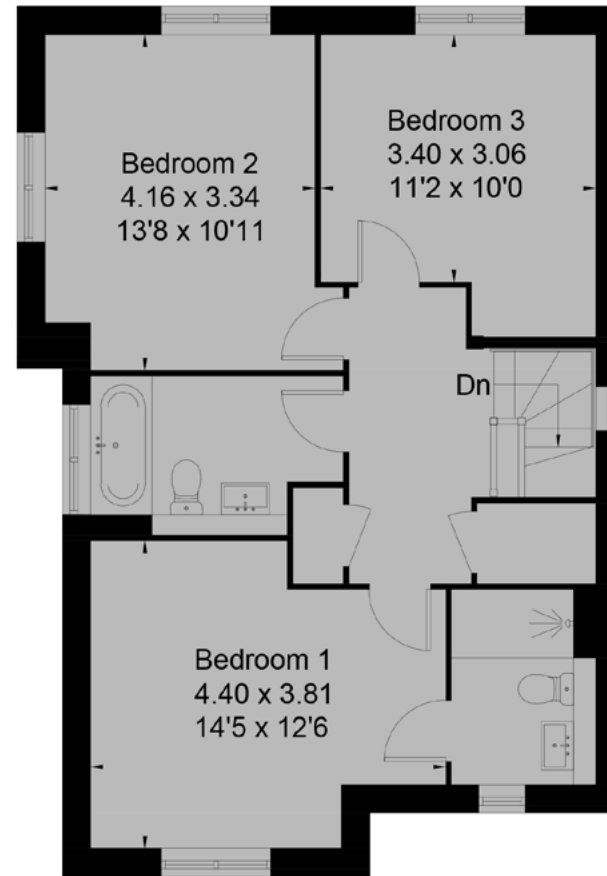
Plot 8
Three bedroom detached house

Plot 8, 135-137 Christchurch Road, Ferndown, BH22 8TB

Approximate Floor Area = 127.3 sq m / 1370 sq ft



Ground Floor



First Floor



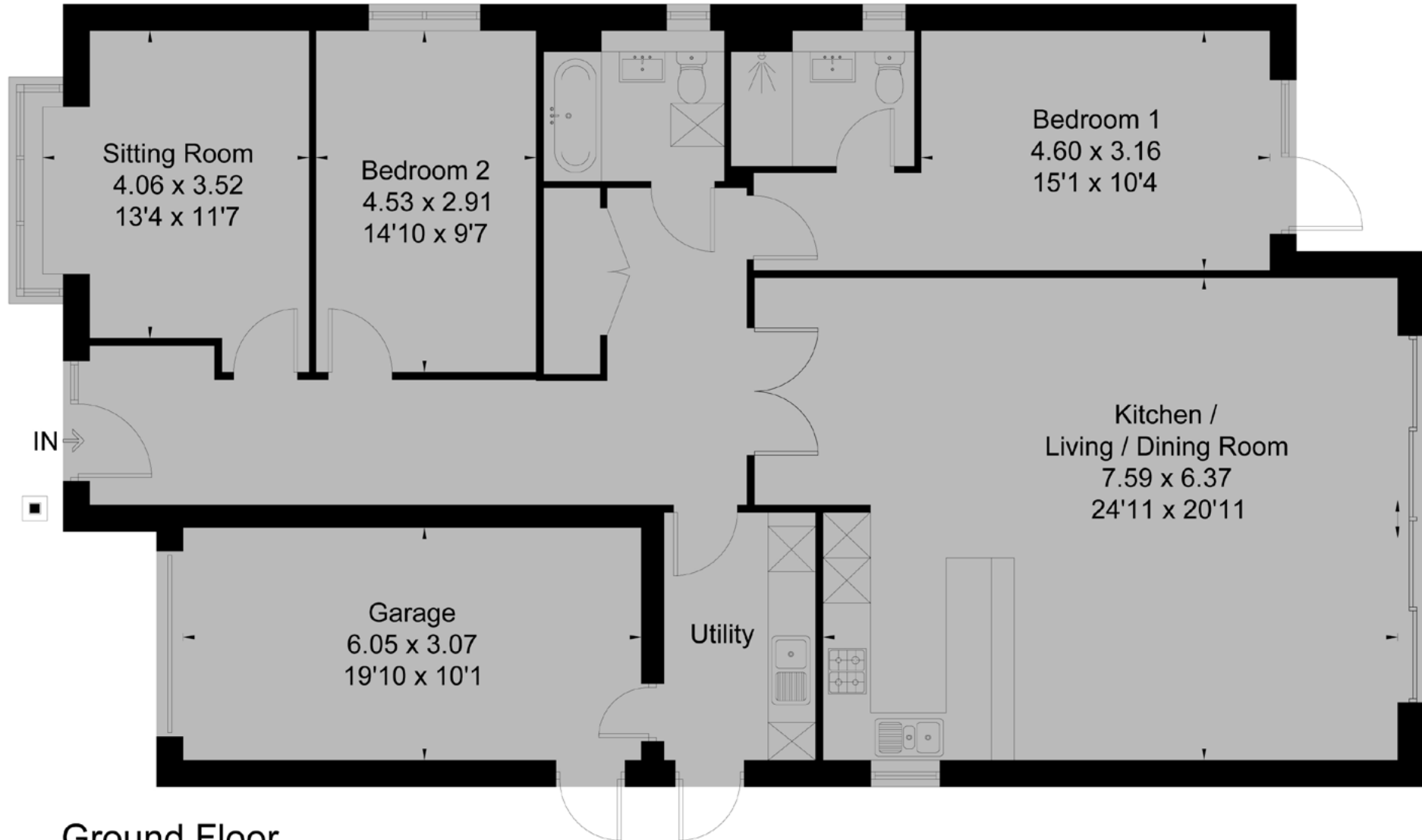
Drawn for illustration and identification purposes only by @fourwalls-group.com #64213



Plot 9
Three bedroom detached bungalow

PLOT 9, 135-137, CHRISTCHURCH ROAD WEST PARLEY FERNDOWN BH22 8TB

Approximate Floor Area = 159.8 sq m / 1720 sq ft



Ground Floor



Drawn for illustration and identification purposes only by @fourwalls-group.com #64213



LUXURY & PRESTIGE

Exclusive Properties



Steve Isaacs
Director
07979 878106
steve@luxuryandprestige.co.uk



Harriet Towing
Head of Sales
07809 908718
harriet@luxuryandprestige.co.uk



Thomas Powner
Residential Sales
07437 491094
tom@luxuryandprestige.co.uk



Asia Roberston
Social Media Manager
07484 719645
asia@luxuryandprestige.co.uk



Valentina Morana
Marketing Assistant
01202 007373
valentina@luxuryandprestige.co.uk



David Chissell
Director
07795 835647
david@luxuryandprestige.co.uk



Adrianna Ciereszko
Photographer / Marketing Manager
01202 007373
adrianna@luxuryandprestige.co.uk



Ryan Horan
Land & New Homes
07512 196688
ryan@luxuryandprestige.co.uk



Jo Bound
Search Agent
01202 007373
jbound@luxuryandprestige.co.uk

Get In Touch

In Person: 28A Haven Road
Canford Cliffs
Poole
BH13 7LP

By Phone: 01202 007373

By Email: info@luxuryandprestige.co.uk

Online: www.luxuryandprestige.co.uk

Facebook: facebook.com/luxuryandprestige

Instagram: [@luxuryprestigerealty](https://www.instagram.com/luxuryprestigerealty)

Property Ref: 0928



Important notice

Luxury and Prestige Realty Ltd wishes to inform prospective purchasers that we have prepared these sales particulars as a general guide. We have not carried out a detailed survey, nor tested the services, appliances and specific fittings. Room sizes are approximate and rounded; they are taken between internal wall surfaces and therefore include cupboards/shelves etc. Accordingly they should not be relied upon for carpets and furnishings. Formal notice is also given that all fixtures and fittings, carpeting, curtains/blinds and kitchen equipment, whether fitted or not, are deemed removable by the vendor unless specifically itemised within these particulars.