



## 4 Fairway View Close

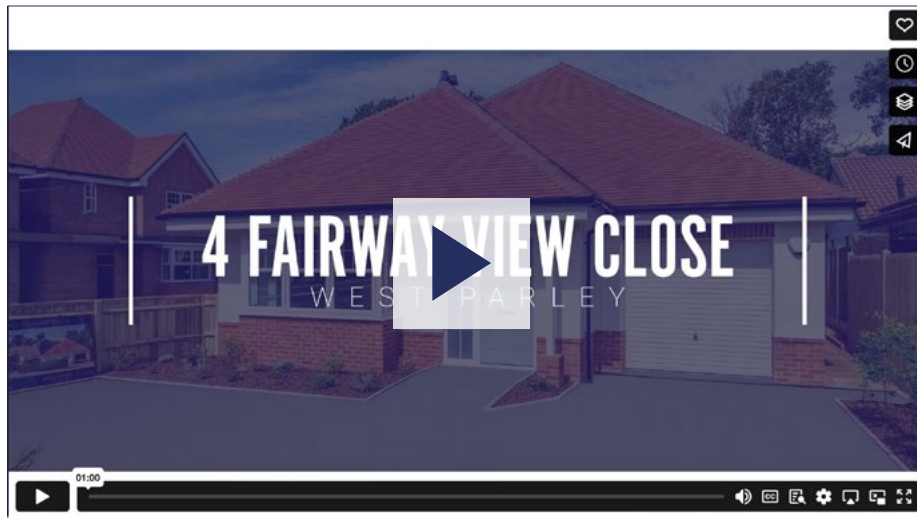
West Parley, Ferndown, Dorset, BH22 8GG



LUXURY &  
PRESTIGE  
Exclusive Properties

## Can't wait to view in person?

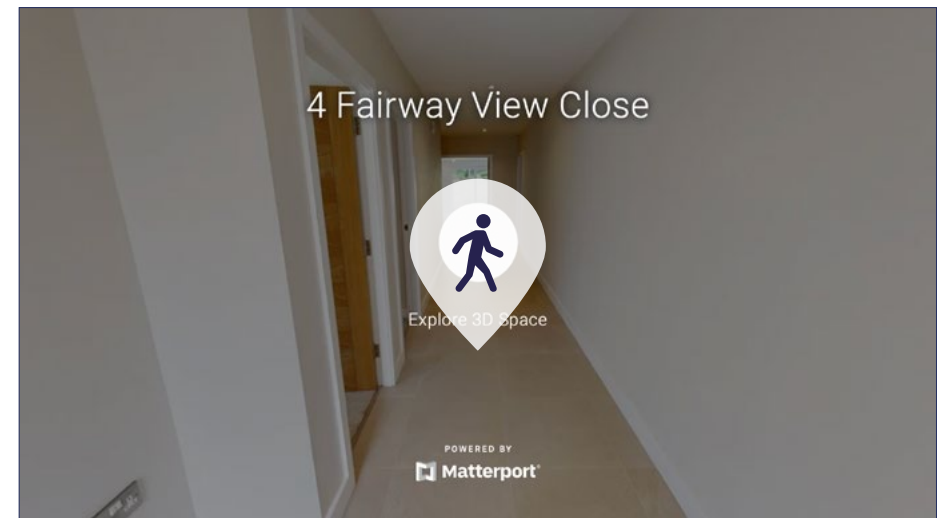
All of our properties feature a professionally produced one minute video, personally introduced by a member of our team as well as a fully interactive 3D tour.



Simply click on the thumbnail above to let one of our team give you a guided tour of the highlights.

If you are longing for a more in-depth explore at your own pace, then head across the page to our fully interactive 3D tour.

**vimeo**



Simply click on the thumbnail above to take a step inside and explore this beautiful home.

This fully immersive experience allows you to 'click and drag' your way through the property at your own pace. It is best viewed on a desktop screen or in landscape mode on your smartphone or tablet.

**Matterport™**





It has a superb level garden that is mainly laid to lawn.





We have digitally furnished the property to show what it could look like.



There are crisp, clean finishes throughout creating bright living spaces.





There are three bedrooms and two luxurious bathrooms.

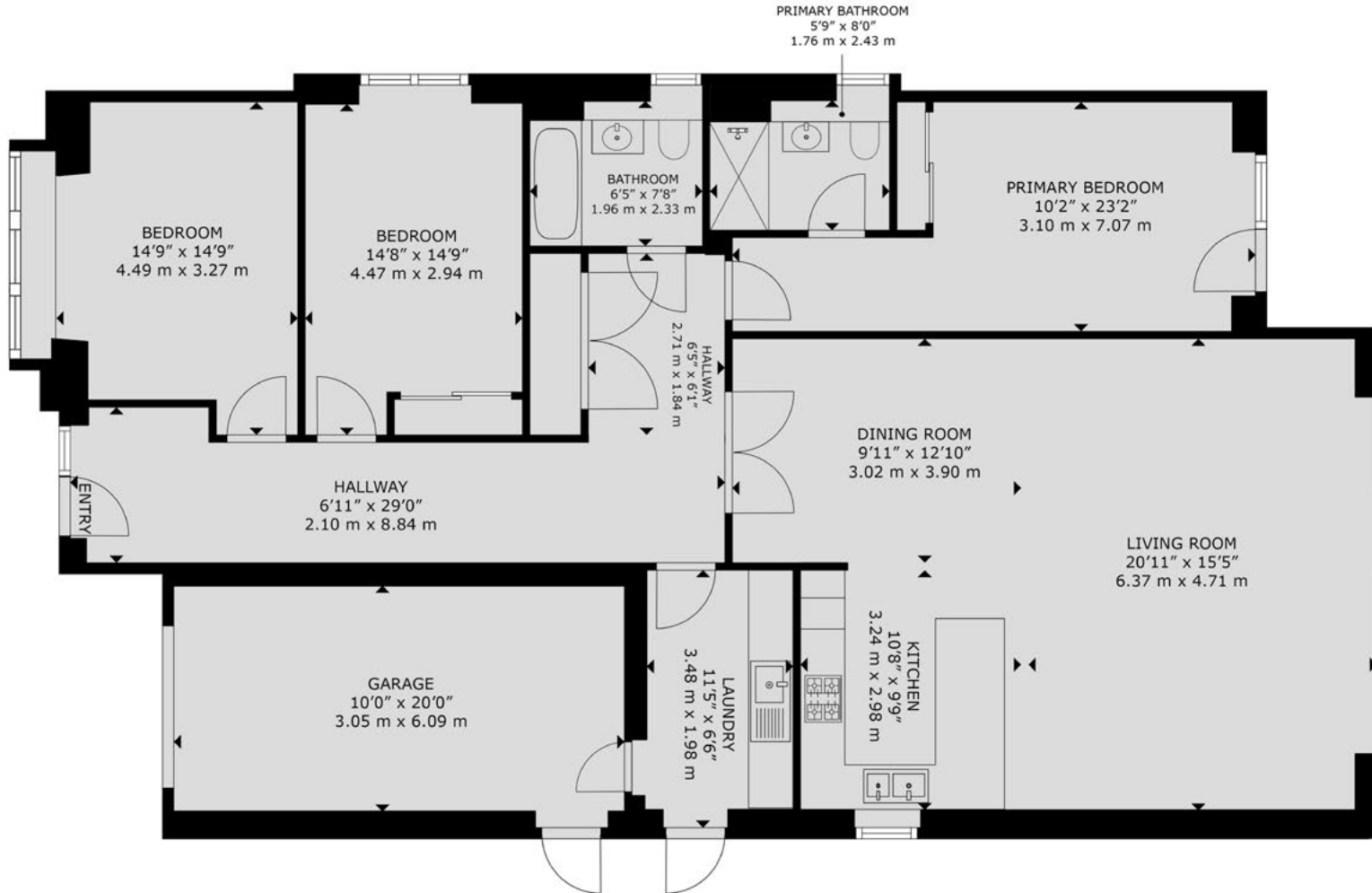




There is plenty of outside space, perfect for entertaining or relaxing.



### 4 Fairway View Close, West Parley, Ferndown, BH22 8GG



GROSS INTERNAL AREA  
HOUSE: 1,565 sq. ft, 145 m<sup>2</sup>, GARAGE: 228 sq. ft, 21 m<sup>2</sup>  
**TOTAL: 1,793 sq. ft, 166 m<sup>2</sup>**  
SIZES AND DIMENSIONS ARE APPROXIMATE, ACTUAL MAY VARY.





## Summary

This brand new detached bungalow is the first part of the latest development from Stanborough Developments who are well known for delivering high quality homes.

The property forms part of a beautiful development which comprises a detached bungalow, two detached houses and six apartments. The popular Ferndown shopping parade is few minutes drive in one direction and the historical Wimborne Minster is also nearby.

This new home is traditional in design and extends to 1,793 square feet. There is an impressive open plan kitchen / dining / lounge area with a separate utility room as well as a spacious master bedroom with a beautifully appointed en suite, two further bedrooms and a modern family bathroom.

There are landscaped low maintenance front and rear gardens with a wide variety of planting. It benefits from off road parking and a spacious integral garage. It is finished to an exceptional standard with bespoke modern interiors and is available for viewings now!

- Brand new detached bungalow
- Large garden
- Spacious open plan living area
- Three bedrooms
- Two bathrooms
- Separate utility
- ORP and integral garage
- Finished to a high standard
- Great location
- Move in ready

## Details

**Guide Price:** £800,000

**Tenure:** Freehold

**Lease Length:** N/A

**Maintenance:** N/A

**Ground Rent:** N/A\*

\* Ground Rents can increase over time and advice should always be sought from your solicitor before exchange of contracts.

**Stamp Duty:** Main Home £27,500\*\*  
Additional Home £51,500\*\*  
\*\* based on guide price

**Council Tax:** Band G  
2024/2025 £x,xxx.xxpa

**EPC:**





# LUXURY & PRESTIGE

Exclusive Properties



**Steve Isaacs**  
**Director**  
07970 878106  
steve@luxuryandprestige.co.uk



**Harriet Towing**  
**Head of Sales**  
07809 908718  
harriet@luxuryandprestige.co.uk



**Thomas Powner**  
**Residential Sales**  
07437 491094  
tom@luxuryandprestige.co.uk



**Asia Roberston**  
**Social Media Manager**  
07484 719645  
asia@luxuryandprestige.co.uk



**Valentina Morana**  
**Marketing Assistant**  
01202 007373  
valentina@luxuryandprestige.co.uk



**David Chissell**  
**Director**  
07795 835647  
david@luxuryandprestige.co.uk



**Adrianna Ciereszko**  
**Photographer / Marketing Manager**  
01202 007373  
adrianna@luxuryandprestige.co.uk



**Ryan Horan**  
**Land & New Homes**  
07512 196688  
ryan@luxuryandprestige.co.uk



**Jo Bound**  
**Search Agent**  
01202 007373  
jbound@luxuryandprestige.co.uk

## Get In Touch

**In Person:** 28A Haven Road  
Canford Cliffs  
Poole  
BH13 7LP

**By Phone:** 01202 007373

**By Email:** info@luxuryandprestige.co.uk

**Online:** www.luxuryandprestige.co.uk

**Facebook:** facebook.com/luxuryandprestige

**Instagram:** @luxuryprestigerealty

**Property Ref:** 0928



### Important notice

Luxury and Prestige Realty Ltd wishes to inform prospective purchasers that we have prepared these sales particulars as a general guide. We have not carried out a detailed survey, nor tested the services, appliances and specific fittings. Room sizes are approximate and rounded; they are taken between internal wall surfaces and therefore include cupboards/shelves etc. Accordingly they should not be relied upon for carpets and furnishings. Formal notice is also given that all fixtures and fittings, carpeting, curtains/blinds and kitchen equipment, whether fitted or not, are deemed removable by the vendor unless specifically itemised within these particulars.