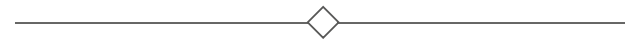




# RADCLIFFE COURT



51 MANOR ROAD, EAST CLIFF, BOURNEMOUTH

PLAN BOOK

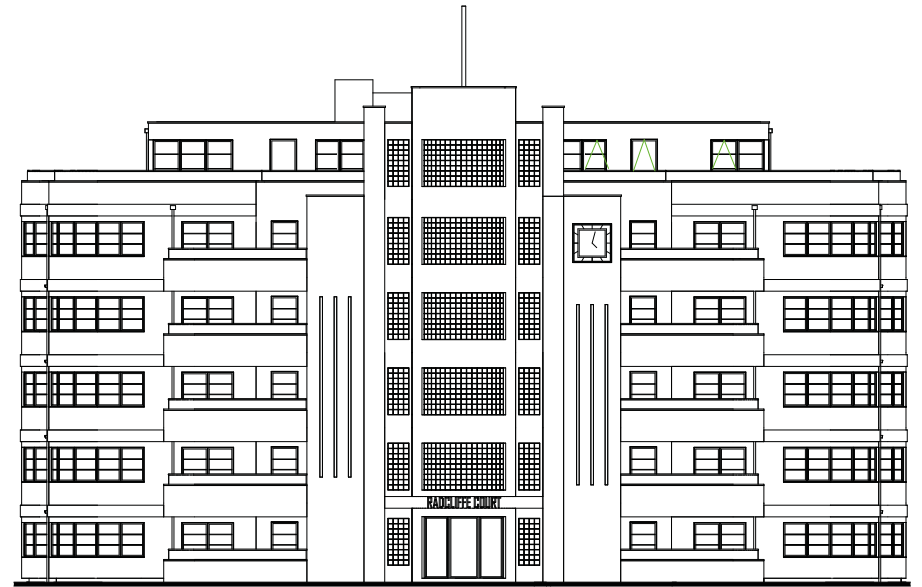








RADCLIFFE COURT

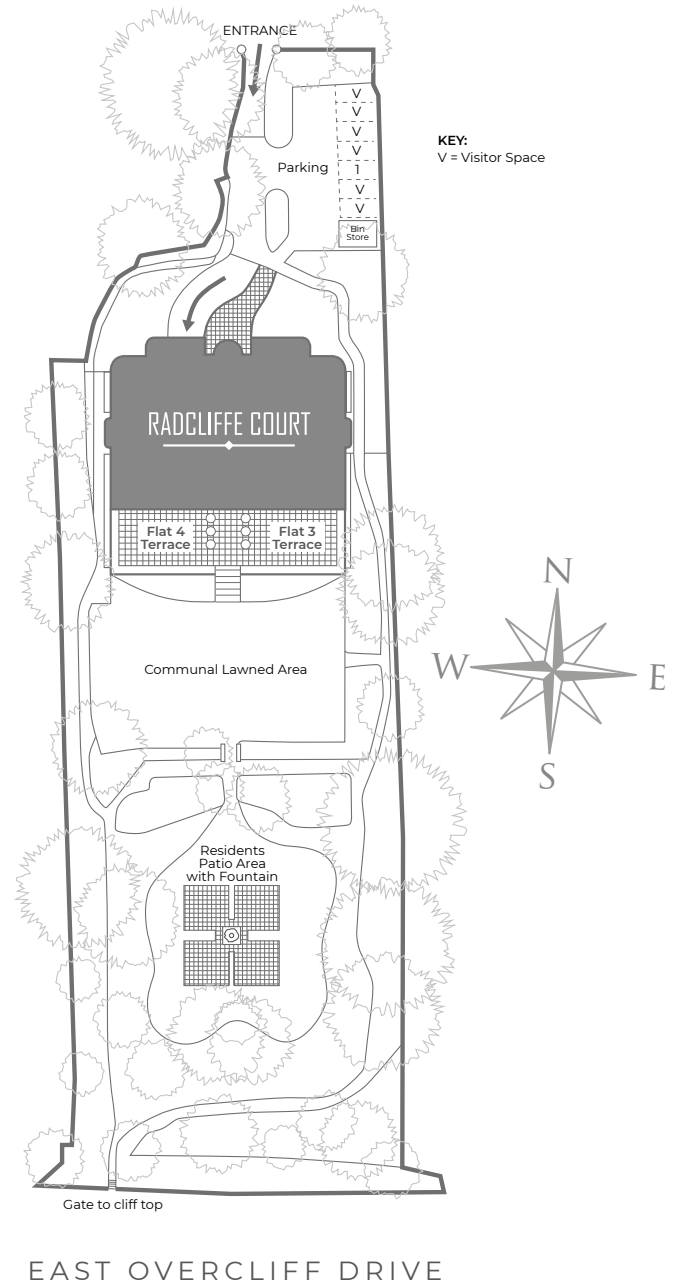


North Elevation



South Elevation





# CONTENT

## GROUND

<b>Page 8</b>	FLAT 1	2 bed - Duplex
<b>Page 9</b>	FLAT 2	2 bed
<b>Page 9</b>	FLAT 3	2 bed
<b>Page 10</b>	FLAT 4	2 bed
<b>Page 10</b>	FLAT 5	2 bed
<b>Page 11</b>	FLAT 6	2 bed - Duplex
<b>Page 12</b>	FLAT 7	2 bed

## FIRST

<b>Page 12</b>	FLAT 8	2 bed
<b>Page 13</b>	FLAT 9	2 bed
<b>Page 13</b>	FLAT 10	2 bed
<b>Page 14</b>	FLAT 11	3 bed - Duplex
<b>Page 15</b>	FLAT 12	2 bed
<b>Page 15</b>	FLAT 13	2 bed
<b>Page 16</b>	FLAT 14	2 bed
<b>Page 16</b>	FLAT 15	2 bed
<b>Page 17</b>	FLAT 16	3 bed - Duplex

## SECOND

<b>Page 18</b>	FLAT 17	2 bed
<b>Page 18</b>	FLAT 18	2 bed
<b>Page 19</b>	FLAT 19	2 bed
<b>Page 19</b>	FLAT 20	2 bed

## THIRD

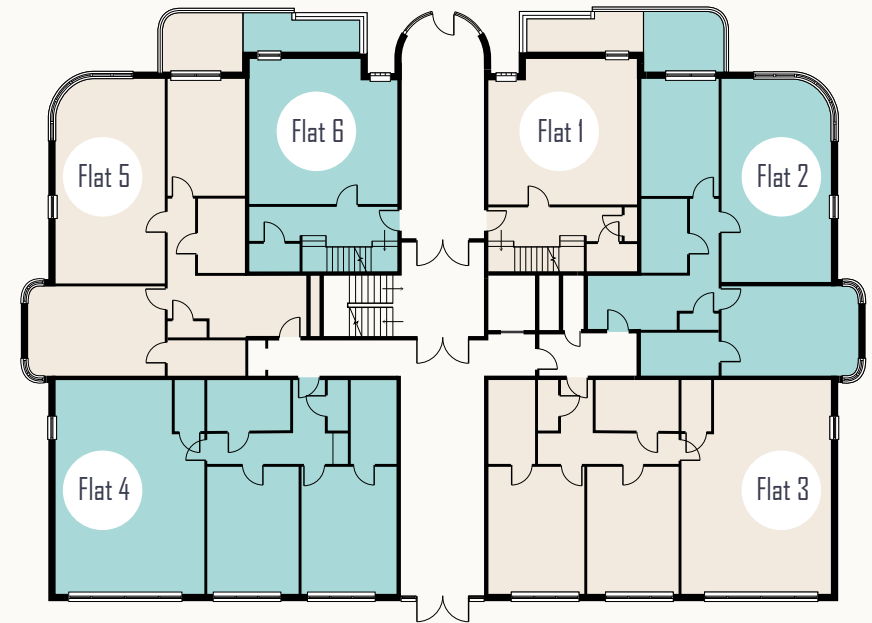
<b>Page 20</b>	FLAT 21	2 bed
<b>Page 20</b>	FLAT 22	2 bed
<b>Page 21</b>	FLAT 23	2 bed
<b>Page 21</b>	FLAT 24	3 bed

## FOURTH

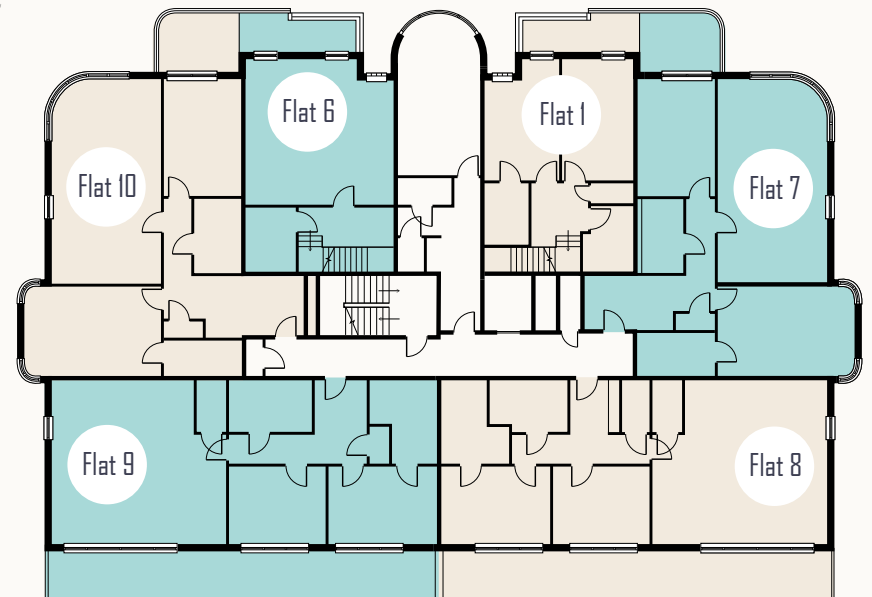
<b>Page 23</b>	FLAT 25	3 bed - Penthouse
<b>Page 23</b>	FLAT 26	3 bed - Penthouse

## FIFTH

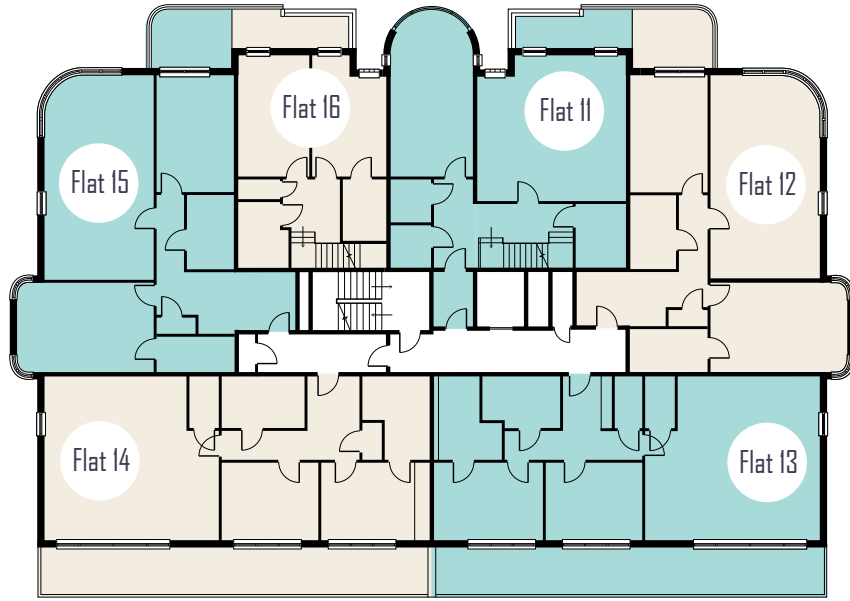
Ground Floor



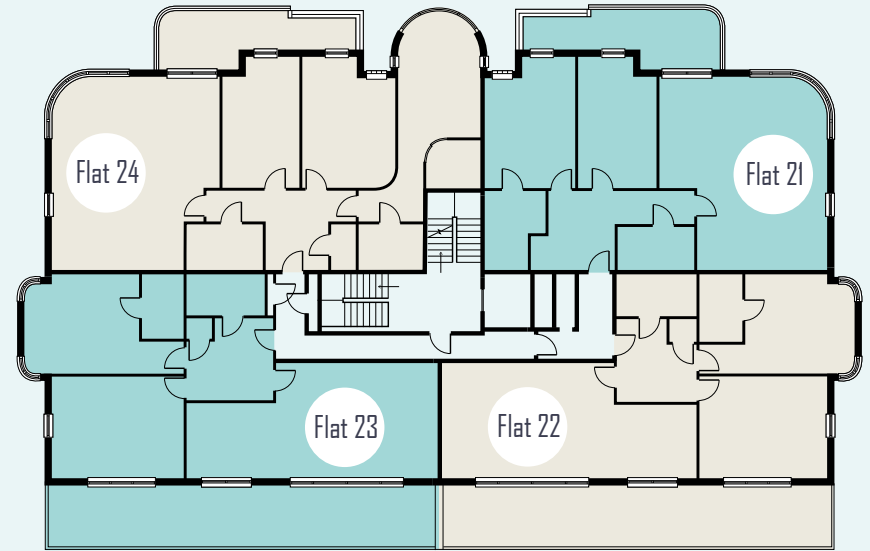
First Floor



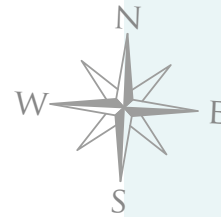
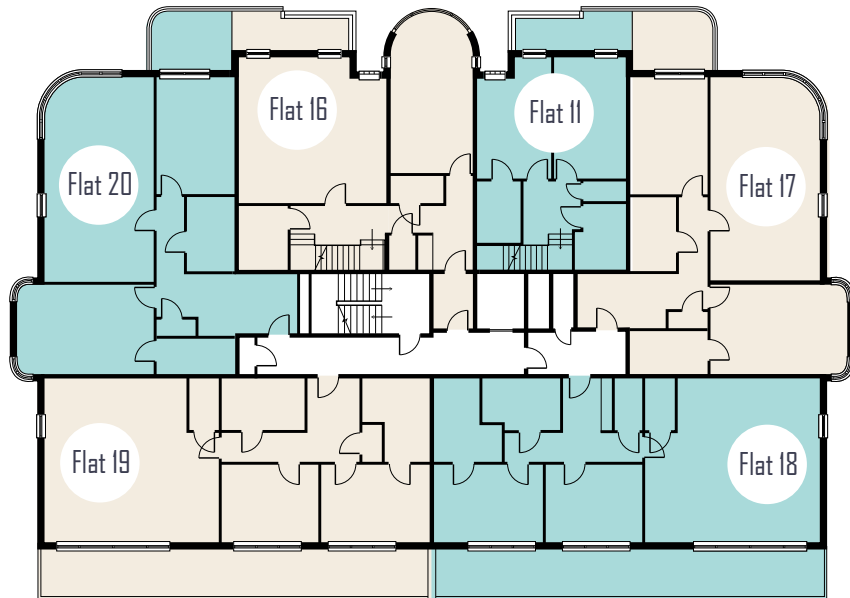
Second Floor



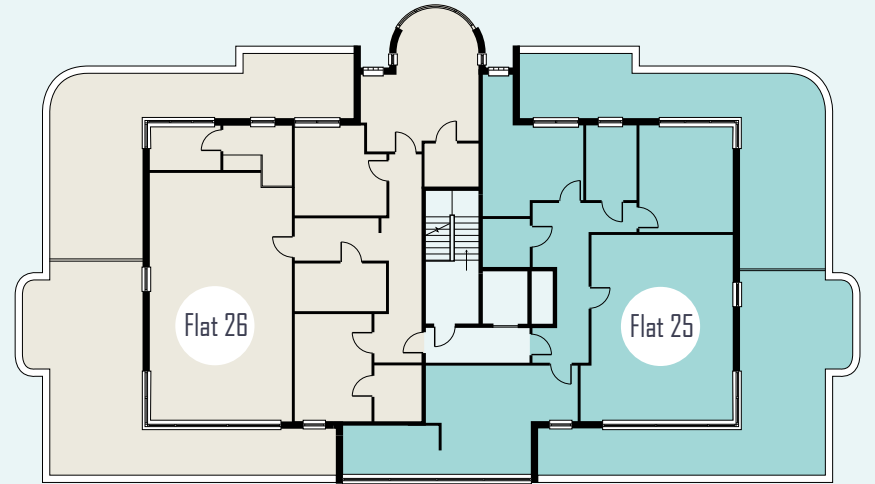
Fourth Floor



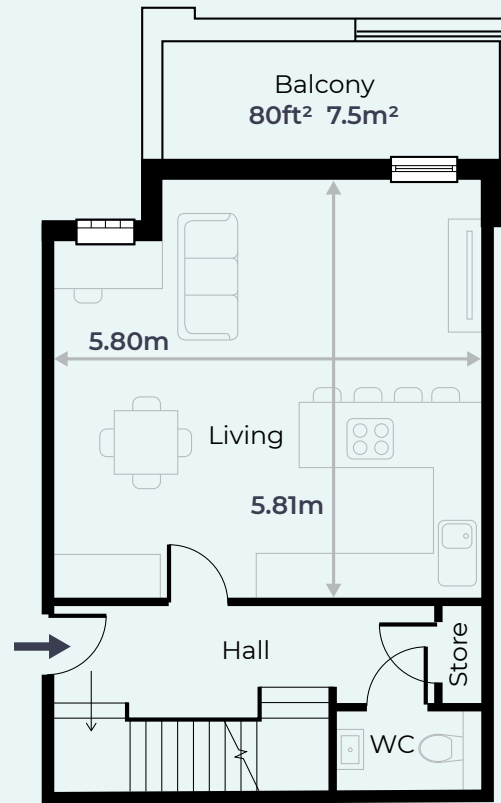
Third Floor



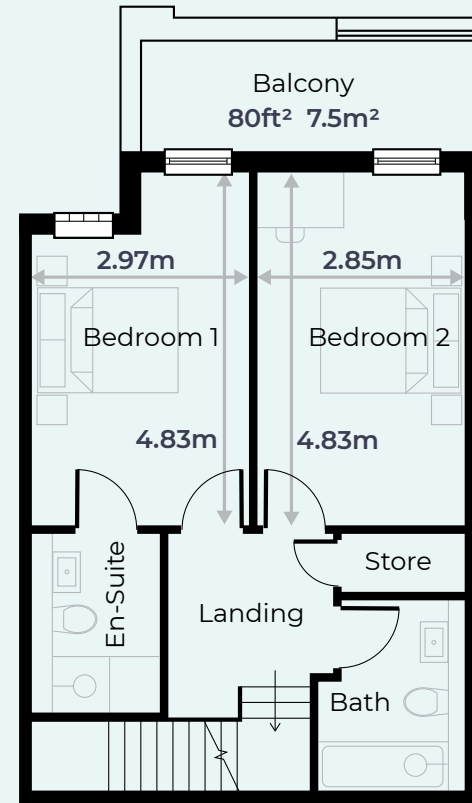
Penthouses Fifth Floor



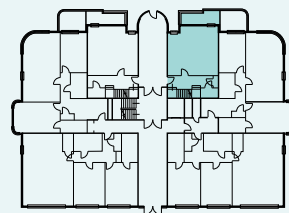
# FLAT 1 DUPLEX GROUND/FIRST FLOOR



Ground Floor



First Floor



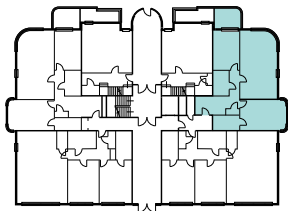
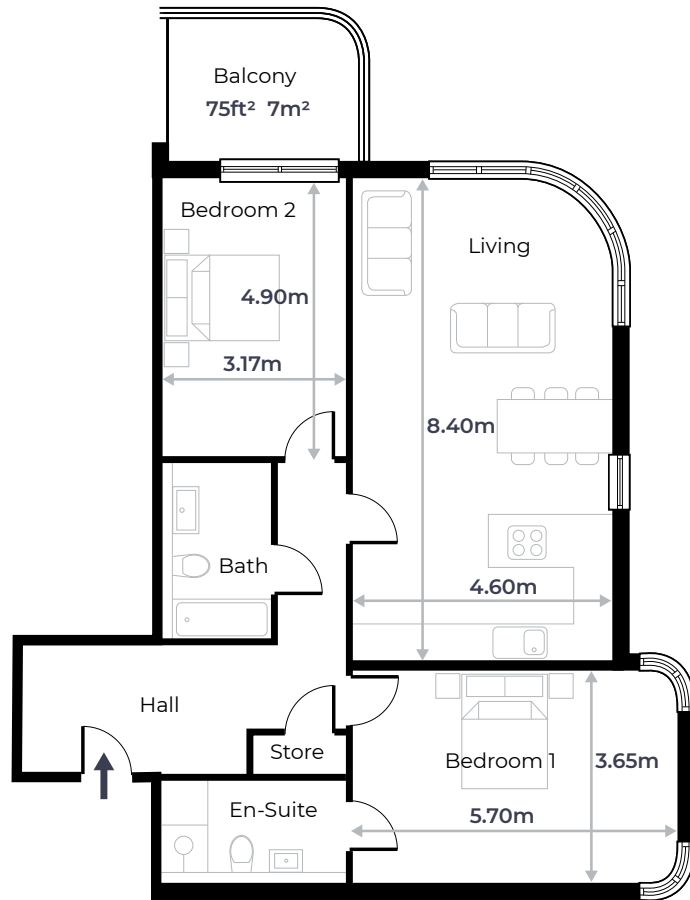
## Total Floor Area

Sqm	91
Sqft	980

All measurements taken are maximum room dimensions. Sizes are approximate and subject to change.



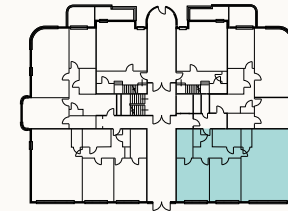
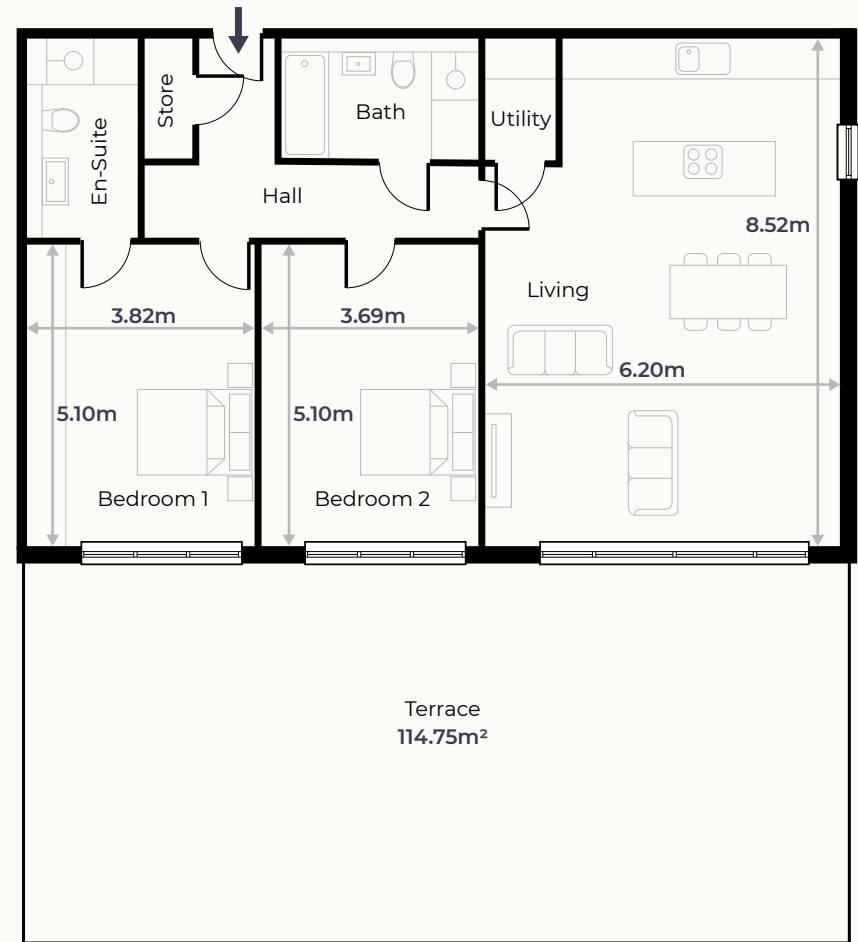
## FLAT 2 GROUND FLOOR



### Total Floor Area

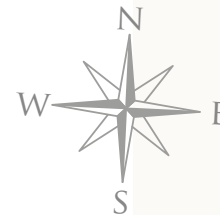
Sqm 98  
Sqft 1055

## FLAT 3 GROUND FLOOR

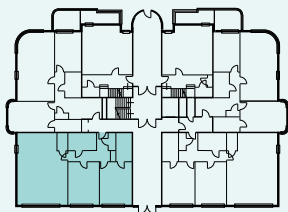
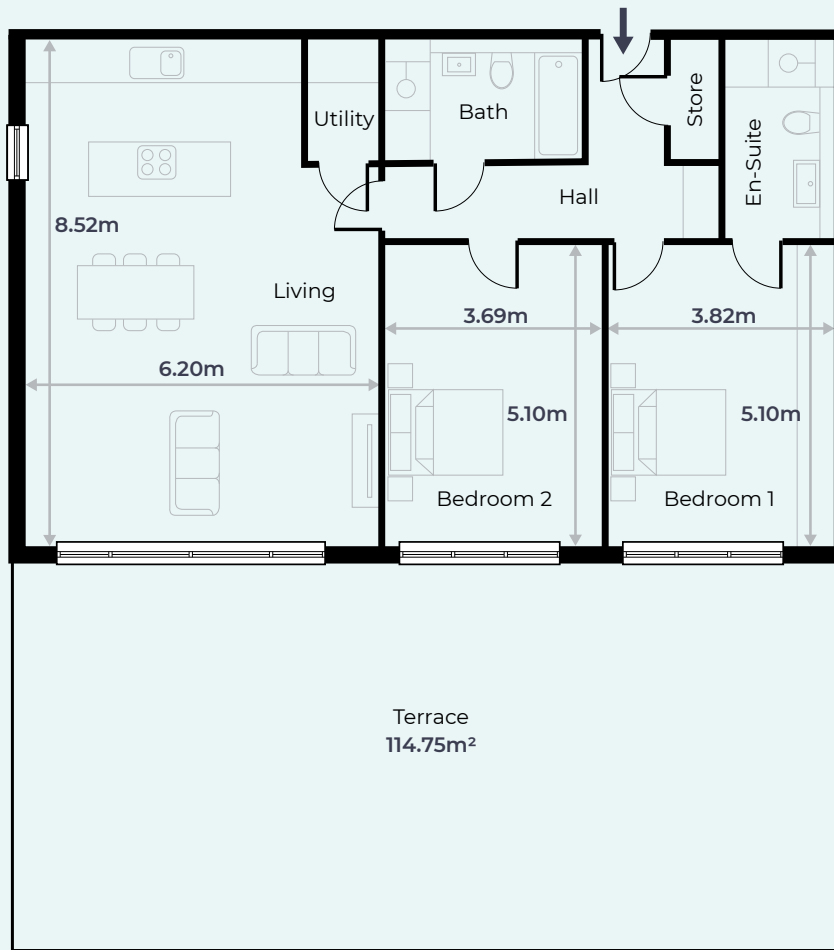


### Total Floor Area

Sqm 112  
Sqft 1206

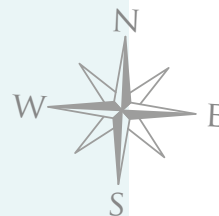


## FLAT 4 GROUND FLOOR

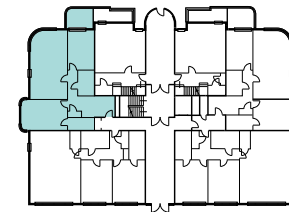
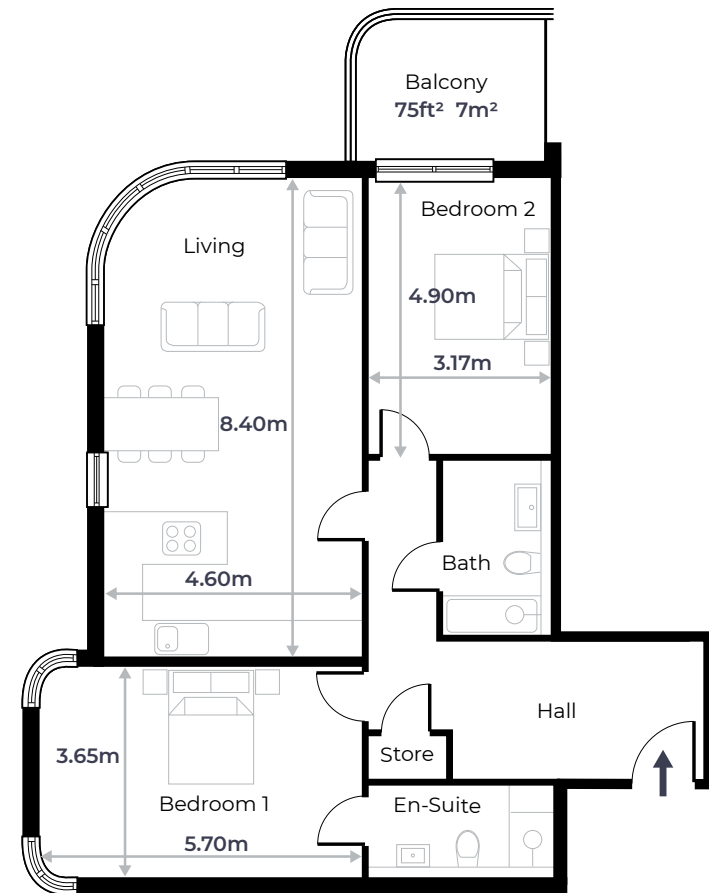


### Total Floor Area

Sqm	112
Sqft	1206



## FLAT 5 GROUND FLOOR

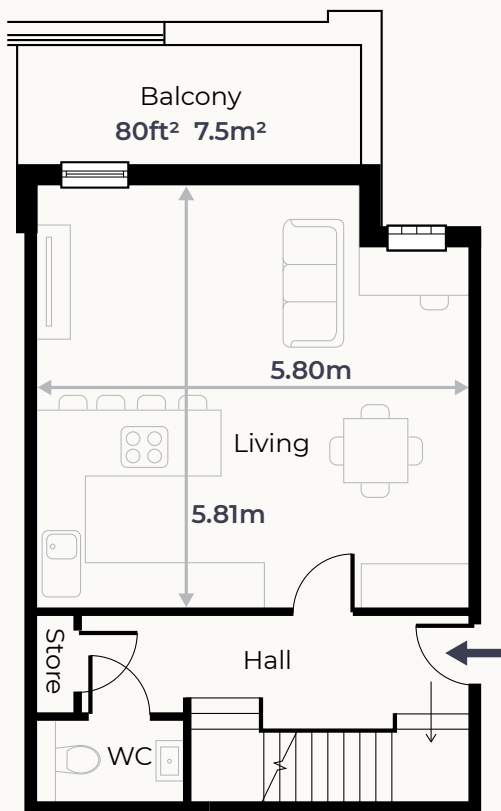


### Total Floor Area

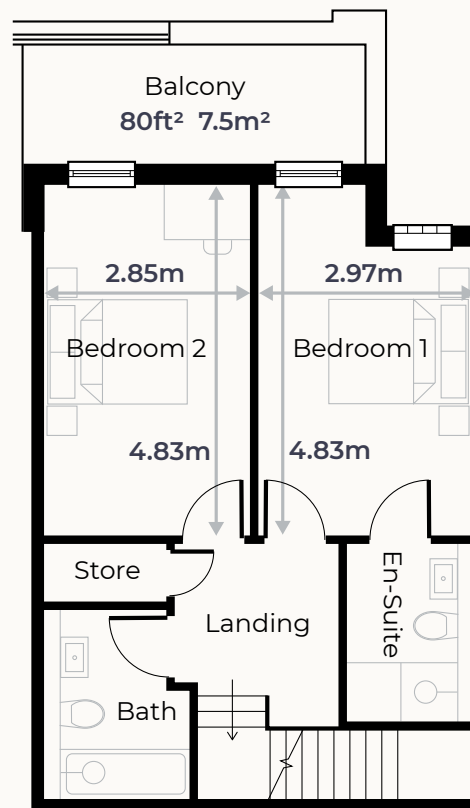
Sqm	98
Sqft	1055

All measurements taken are maximum room dimensions. Sizes are approximate and subject to change.

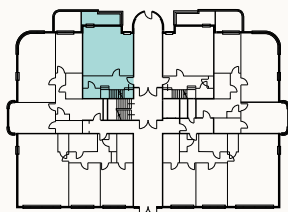
# FLAT 6 DUPLEX GROUND/FIRST FLOOR



Ground Floor



First Floor



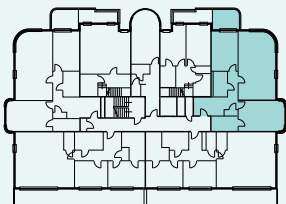
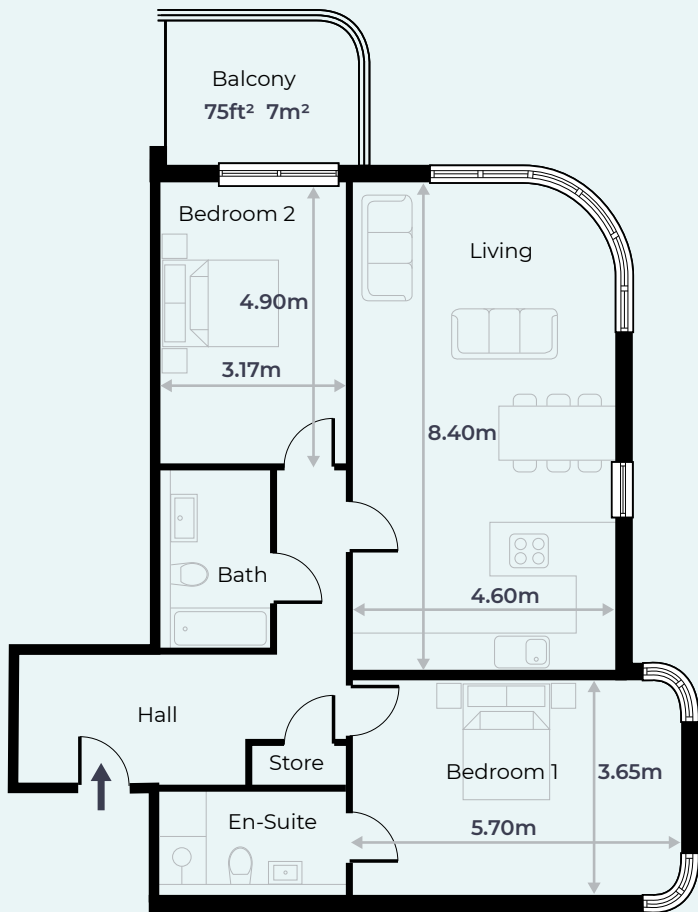
## Total Floor Area

Sqm	91
Sqft	980

All measurements taken are maximum room dimensions. Sizes are approximate and subject to change.



## FLAT 7 FIRST FLOOR

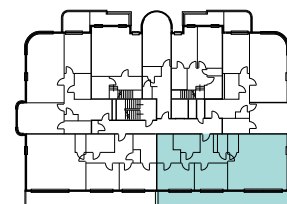
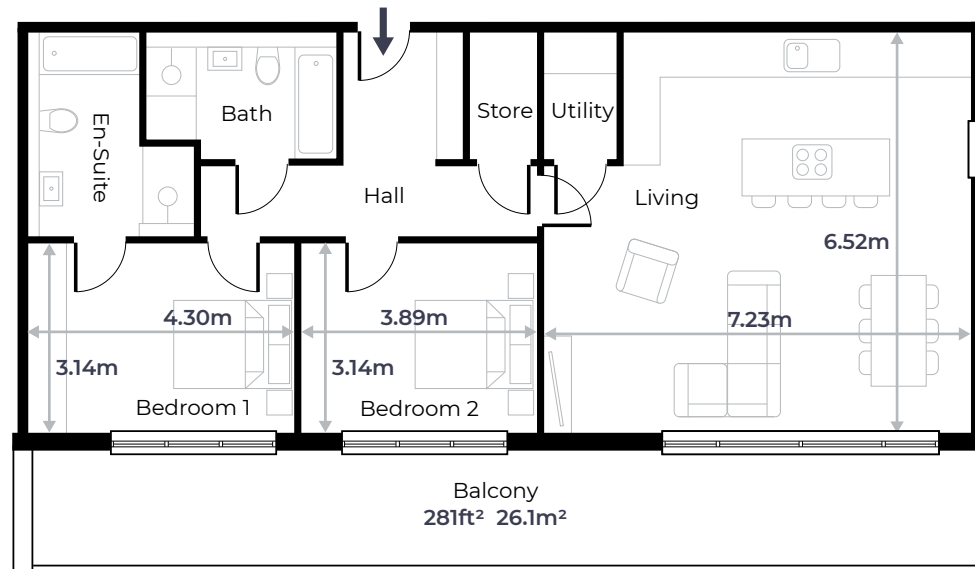


### Total Floor Area

Sqm 98  
Sqft 1055



## FLAT 8 FIRST FLOOR

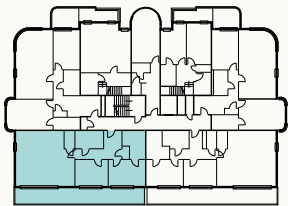
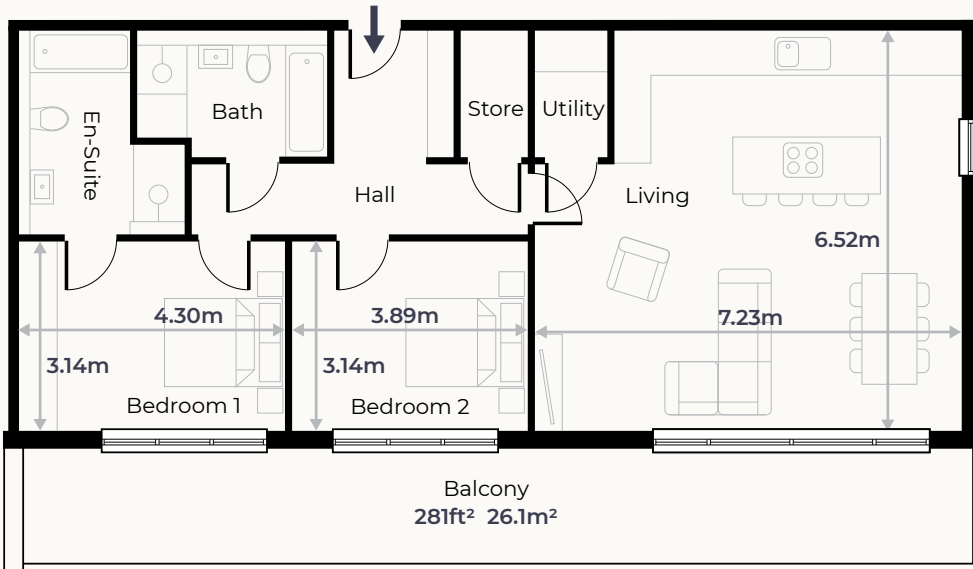


### Total Floor Area

Sqm 96  
Sqft 1033

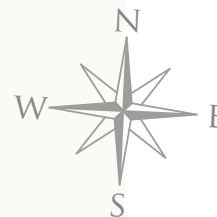
All measurements taken are maximum room dimensions.  
Sizes are approximate and subject to change.

# FLAT 9 FIRST FLOOR

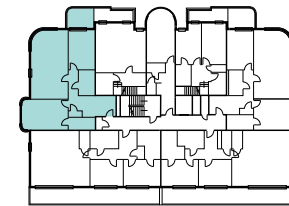


## Total Floor Area

Sqm 96  
Sqft 1033



# FLAT 10 FIRST FLOOR

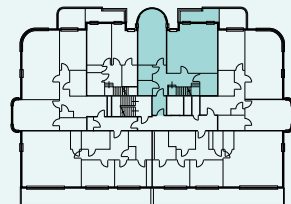
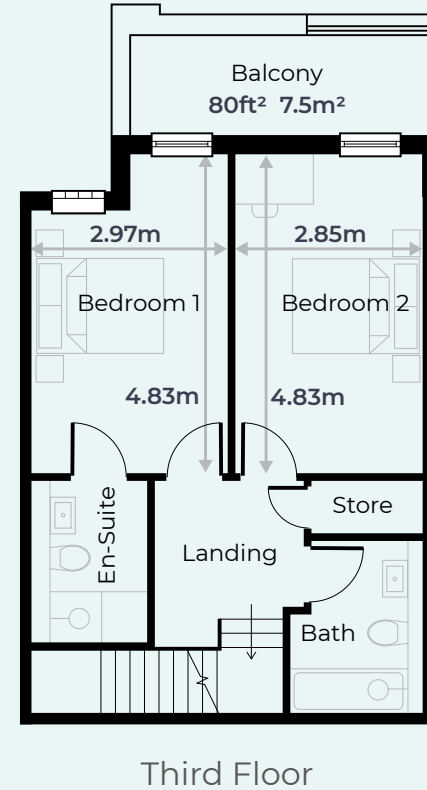
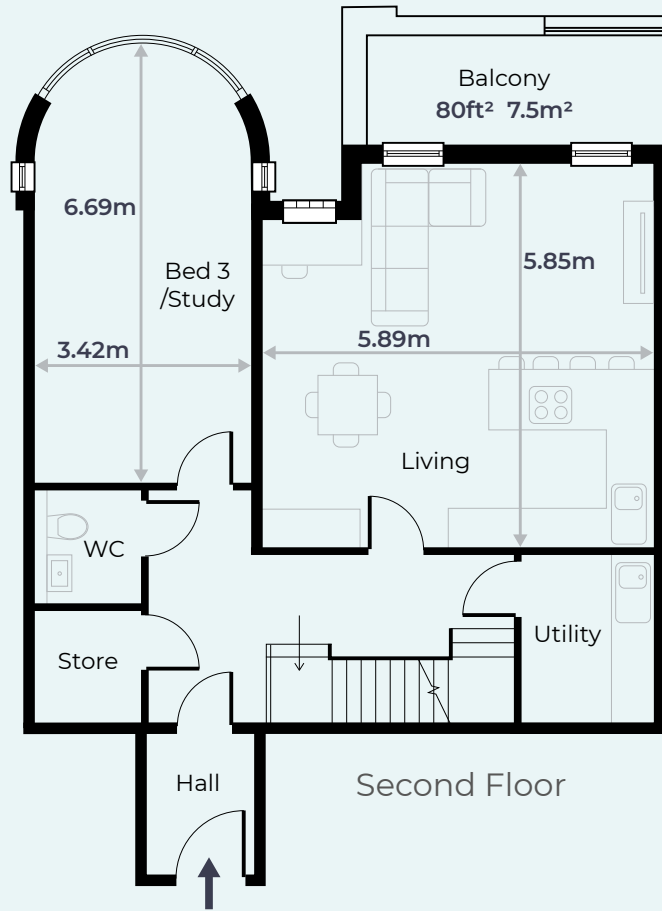


## Total Floor Area

Sqm 98  
Sqft 1055

All measurements taken are maximum room dimensions.  
Sizes are approximate and subject to change.

# FLAT 11 DUPLEX SECOND/THIRD FLOOR



## Total Floor Area

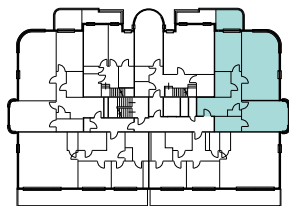
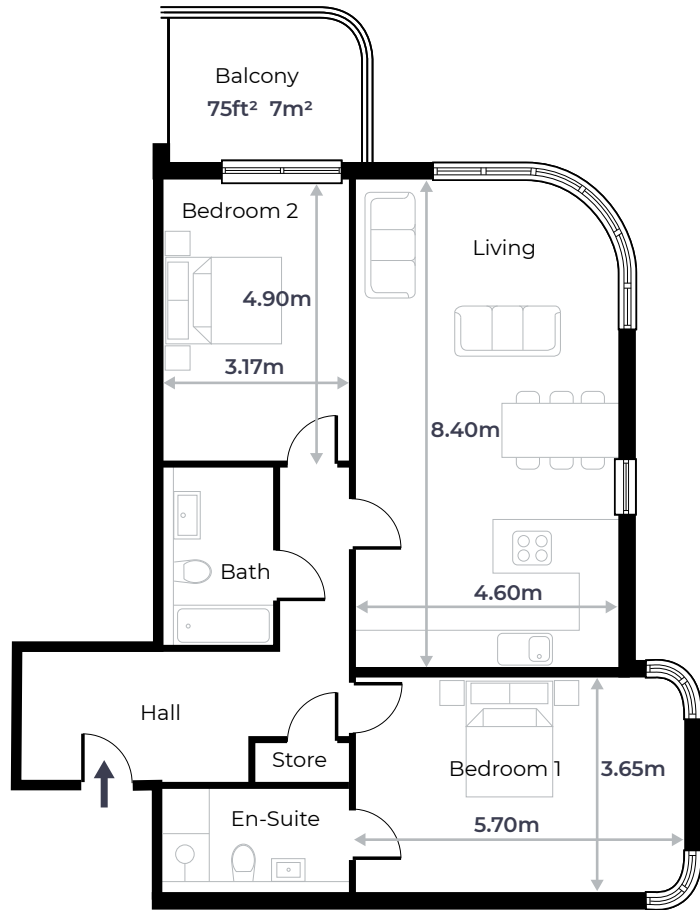
Sqm 128

Sqft 1378

All measurements taken are maximum room dimensions. Sizes are approximate and subject to change.



## FLAT 12 SECOND FLOOR

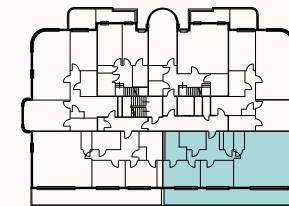
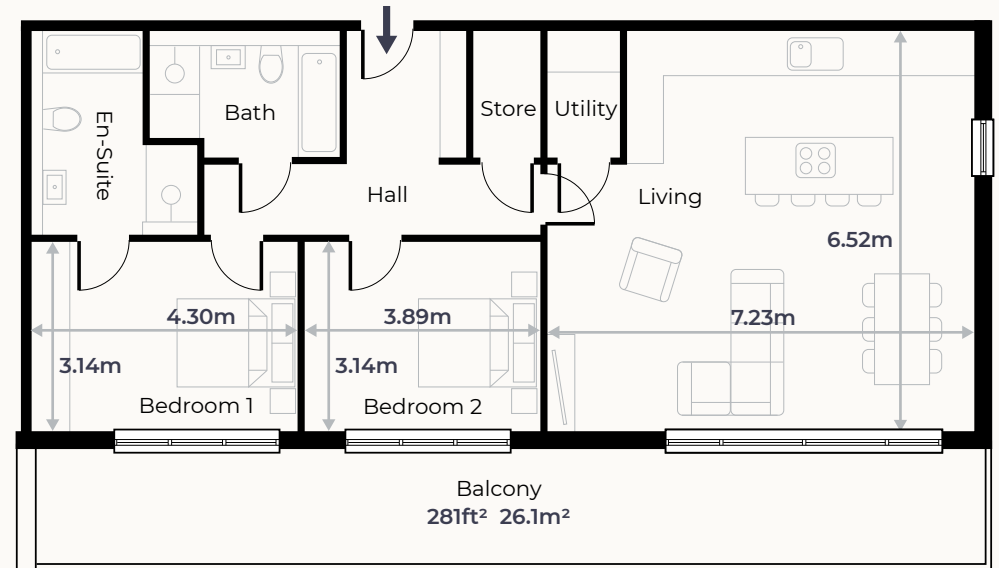


### Total Floor Area

Sqm 98  
Sqft 1055



## FLAT 13 SECOND FLOOR

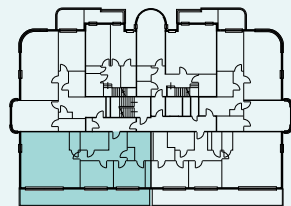
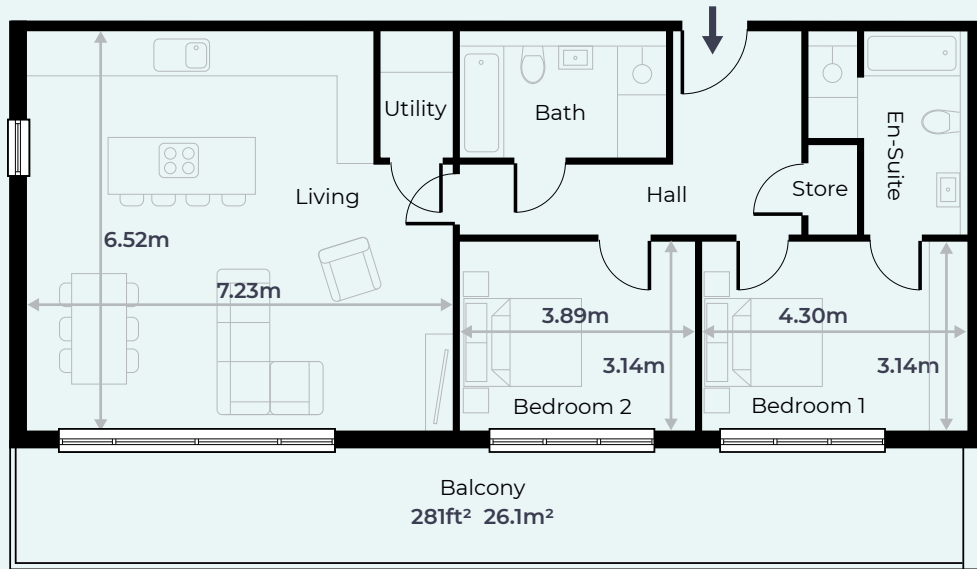


### Total Floor Area

Sqm 96  
Sqft 1033

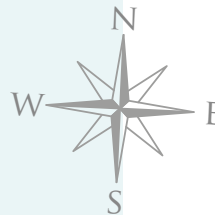
All measurements taken are maximum room dimensions.  
Sizes are approximate and subject to change.

## FLAT 14 SECOND FLOOR

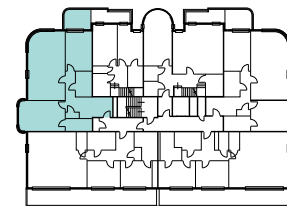
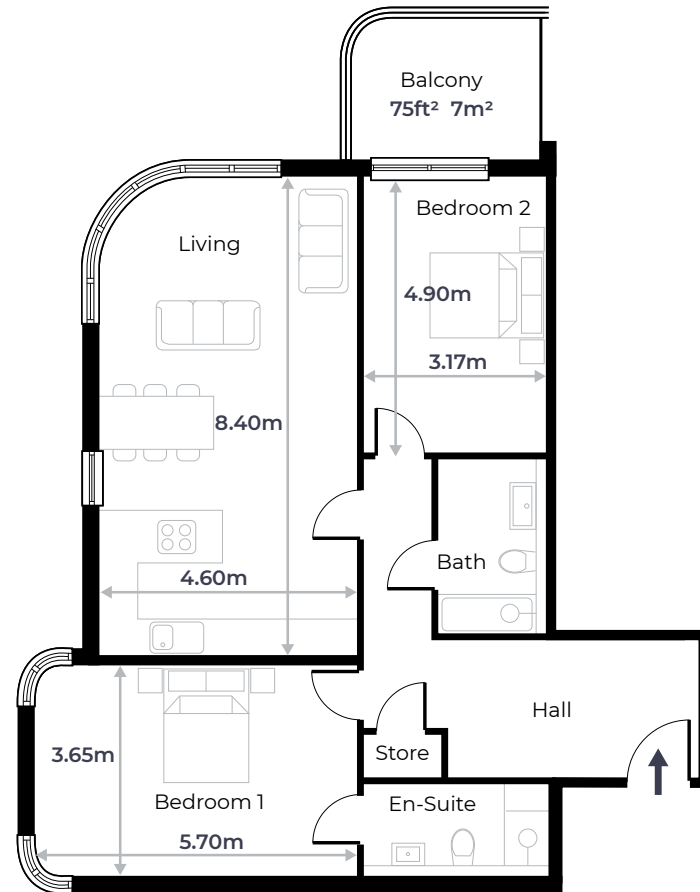


### Total Floor Area

Sqm 96  
Sqft 1033



## FLAT 15 SECOND FLOOR

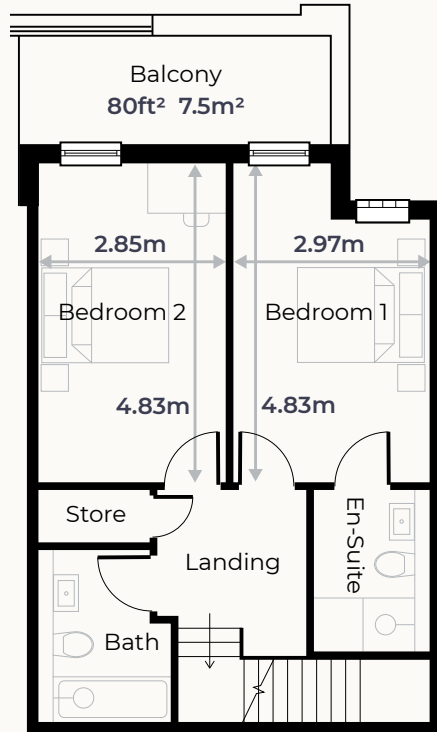


### Total Floor Area

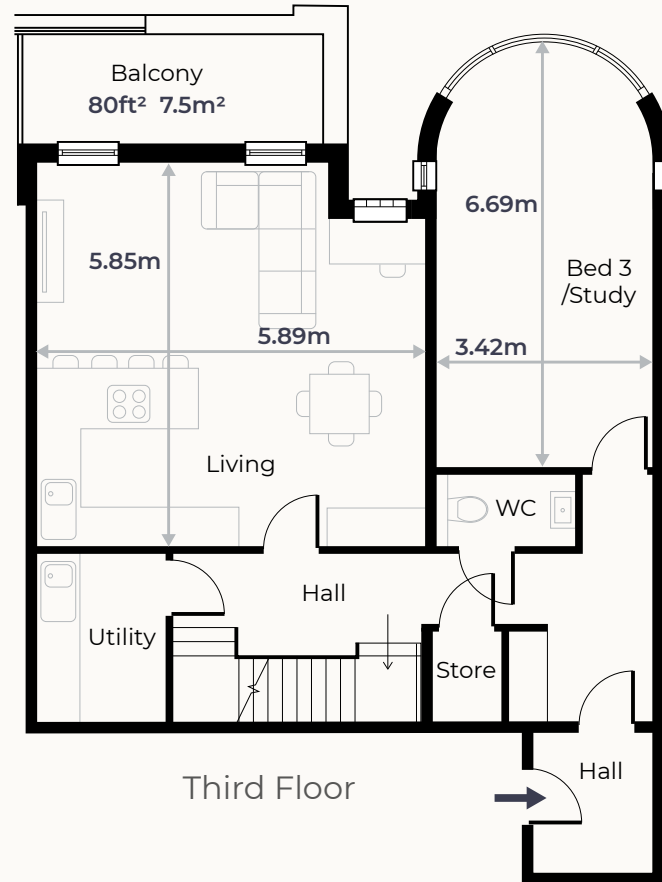
Sqm 98  
Sqft 1055

All measurements taken are maximum room dimensions.  
Sizes are approximate and subject to change.

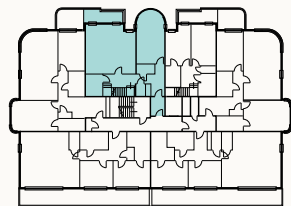
# FLAT 16 DUPLEX SECOND/THIRD FLOOR



Second Floor



Third Floor



## Total Floor Area

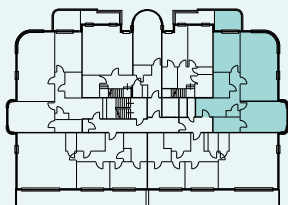
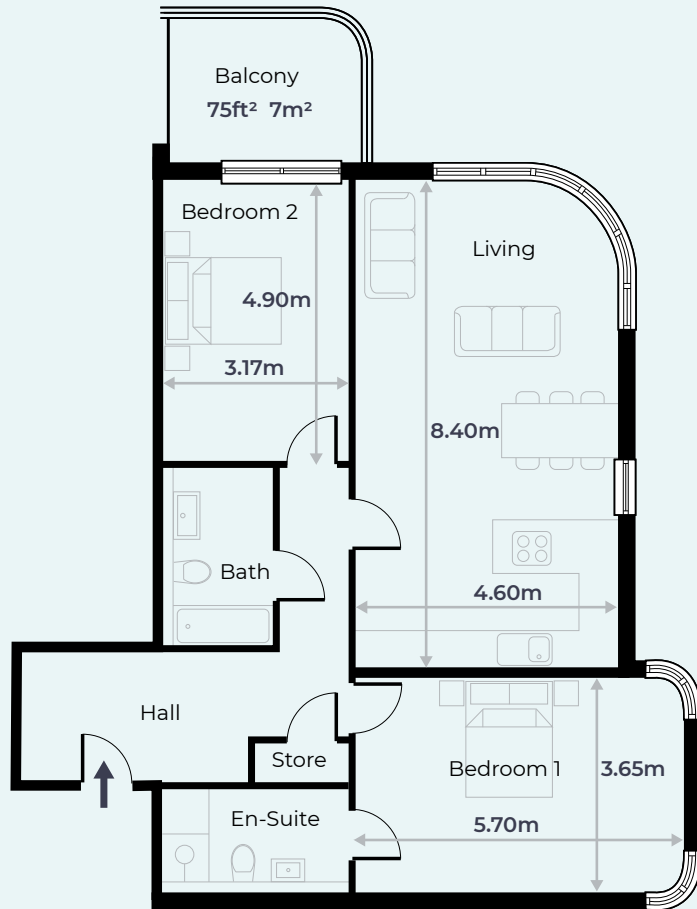
Sqm 128

Sqft 1378

All measurements taken are maximum room dimensions. Sizes are approximate and subject to change.



## FLAT 17 THIRD FLOOR

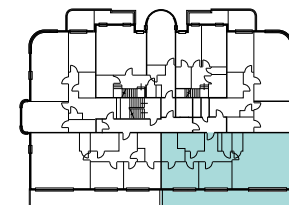
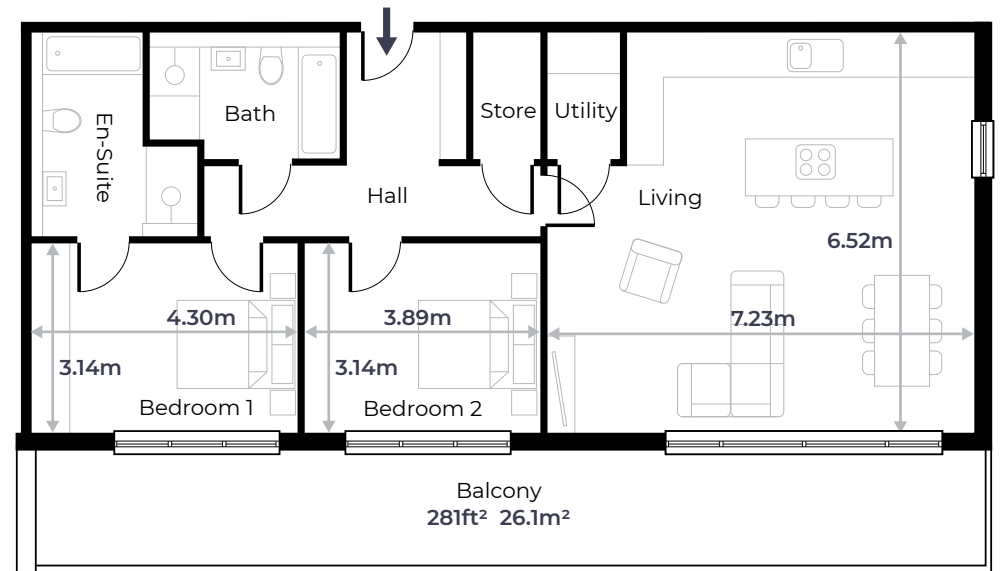


### Total Floor Area

Sqm 98  
Sqft 1055



## FLAT 18 THIRD FLOOR

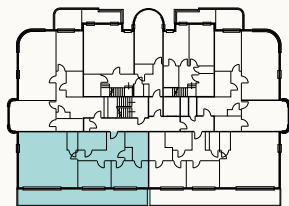
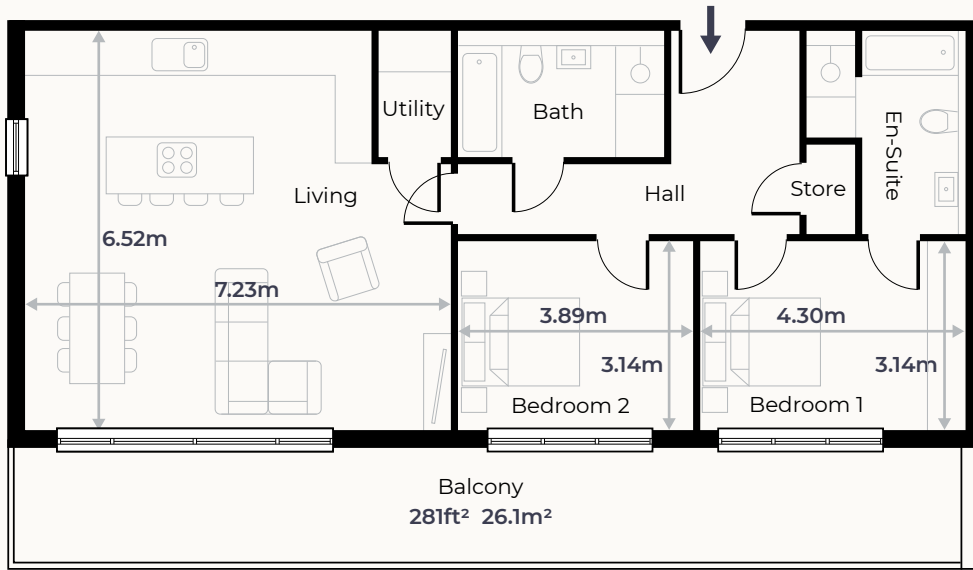


### Total Floor Area

Sqm 96  
Sqft 1033

All measurements taken are maximum room dimensions.  
Sizes are approximate and subject to change.

## FLAT 19 THIRD FLOOR

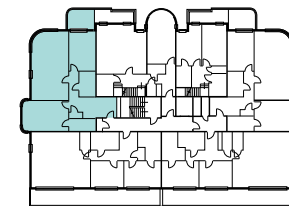


### Total Floor Area

Sqm 96  
 Sqft 1033



## FLAT 20 THIRD FLOOR



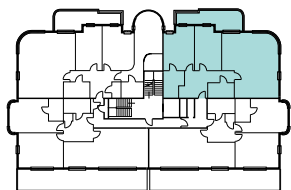
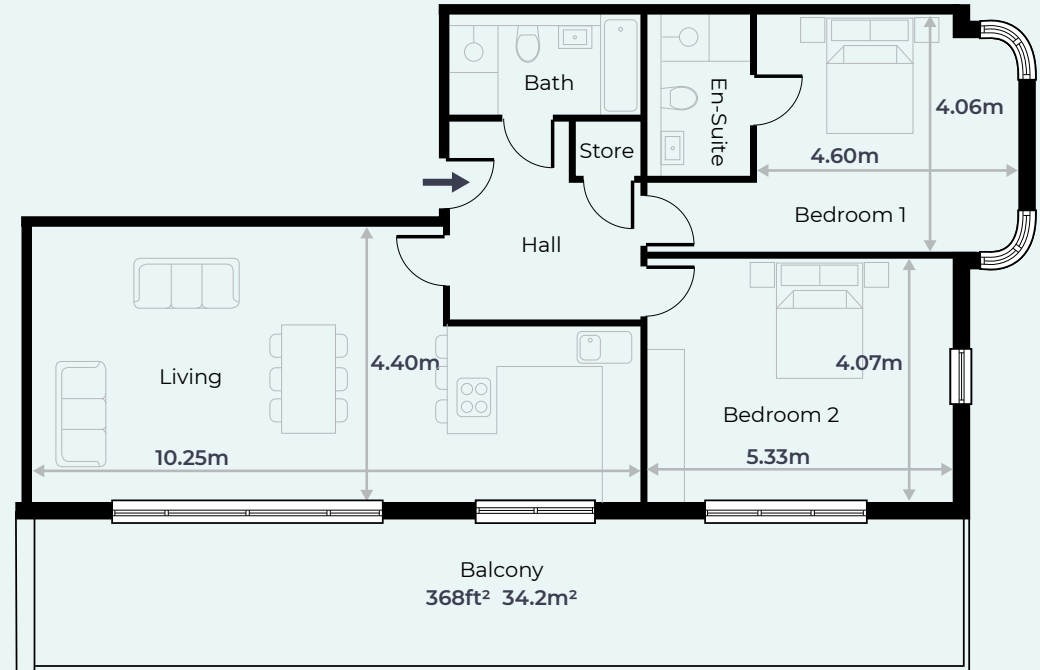
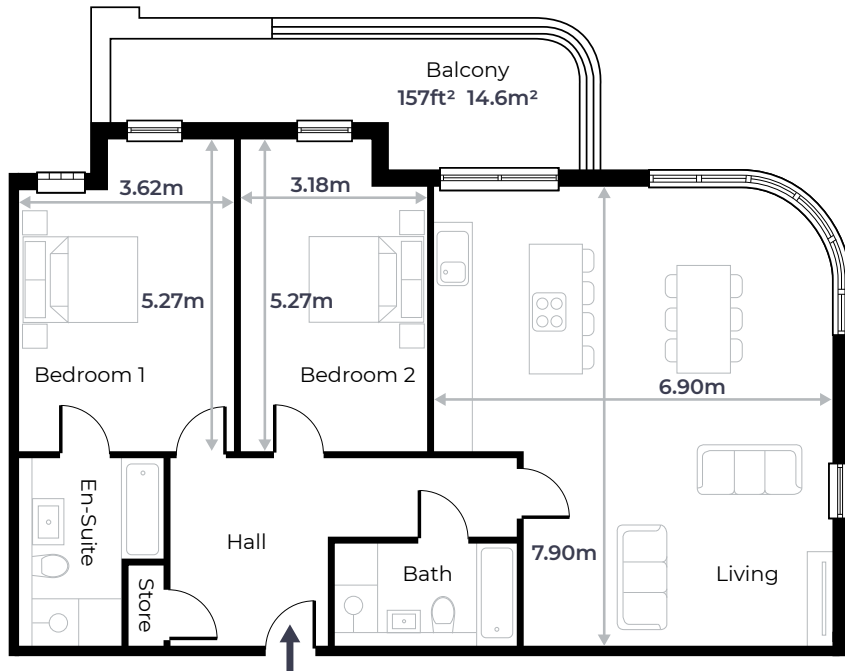
### Total Floor Area

Sqm 98  
 Sqft 1055

All measurements taken are maximum room dimensions. Sizes are approximate and subject to change.

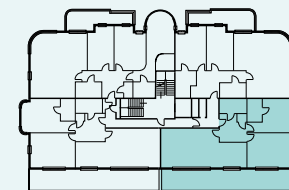
## FLAT 21 FOURTH FLOOR

## FLAT 22 FOURTH FLOOR



### Total Floor Area

Sqm 105  
 Sqft 1130

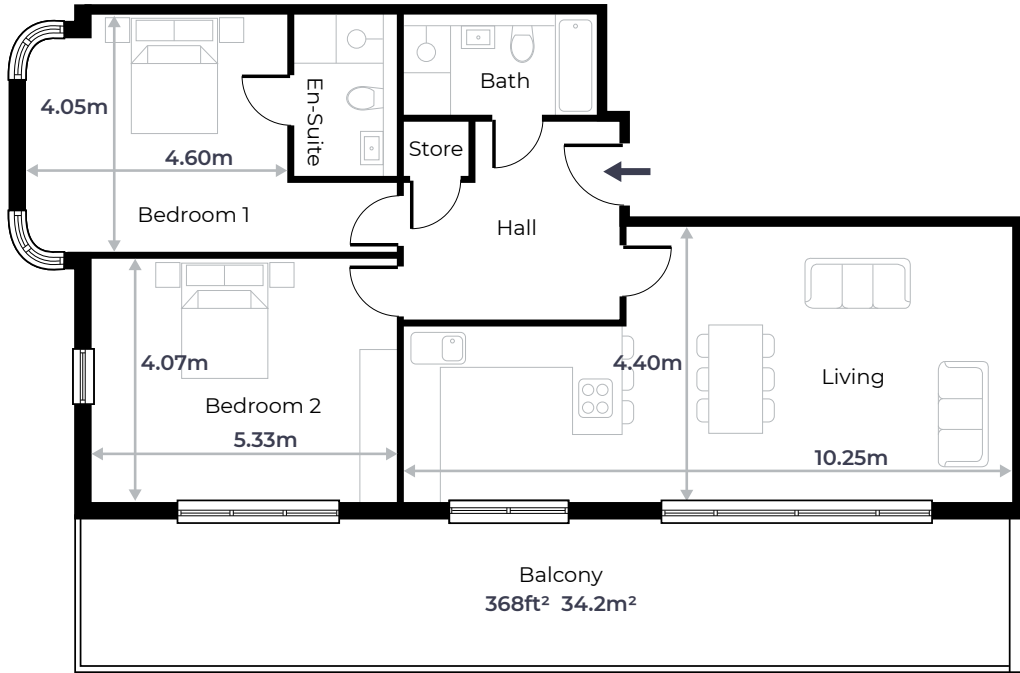


### Total Floor Area

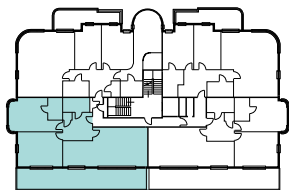
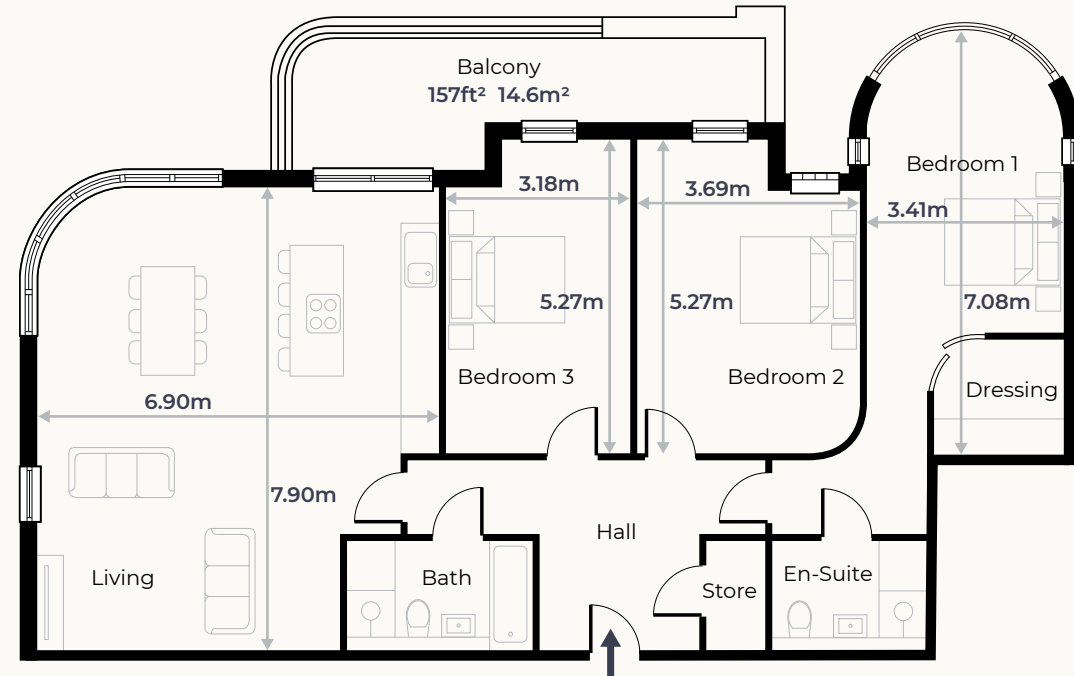
Sqm 99  
 Sqft 1066



## FLAT 23 FOURTH FLOOR

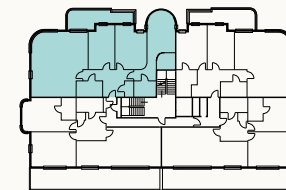


## FLAT 24 FOURTH FLOOR



### Total Floor Area

Sqm	100
Sqft	1076

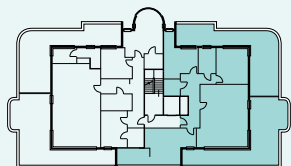
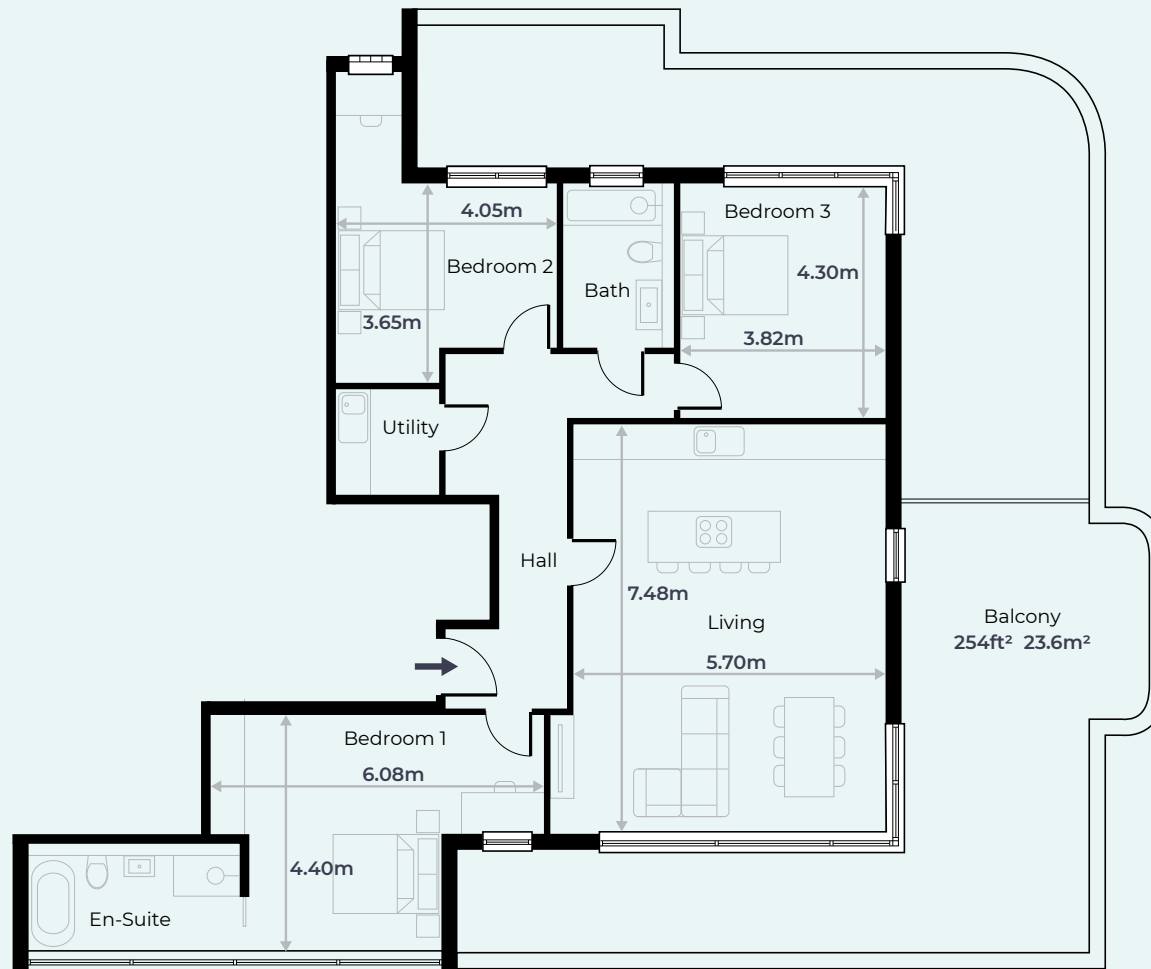


### Total Floor Area

Sqm	131
Sqft	1410

All measurements taken are maximum room dimensions.  
Sizes are approximate and subject to change.

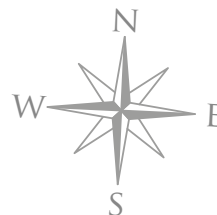
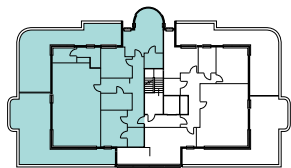
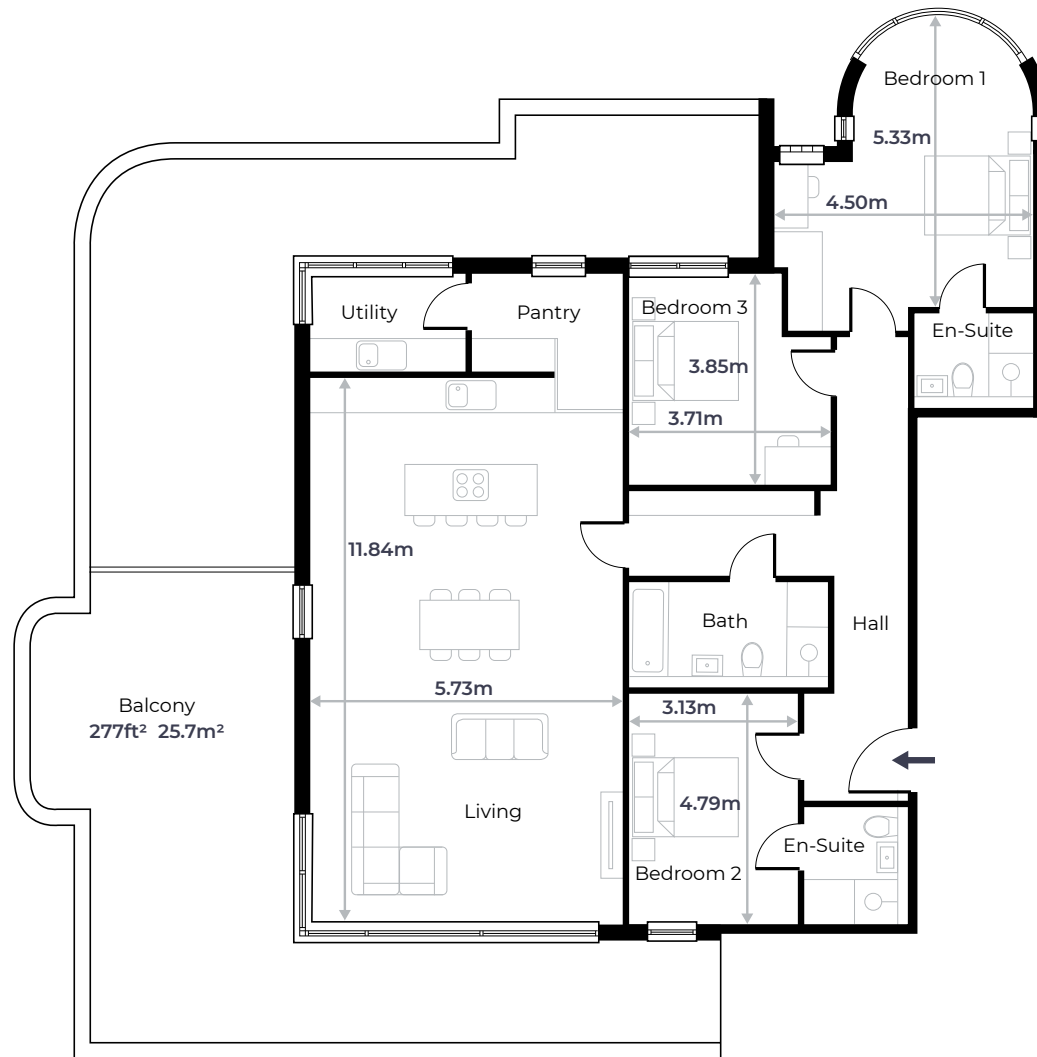
# FLAT 25 PENTHOUSE FIFTH FLOOR



## Total Floor Area

Sqm	126
Sqft	1356

# FLAT 26 PENTHOUSE FIFTH FLOOR



## Total Floor Area

Sqm	141
Sqft	1518

All measurements taken are maximum room dimensions.  
 Sizes are approximate and subject to change.



[www.radcliffecourt.co.uk](http://www.radcliffecourt.co.uk)

**frost & co**

**All Enquiries**

Frost & Co Estate Agents | 01202 311888 | [radcliffe@frostandco.net](mailto:radcliffe@frostandco.net)