



Land at Alipore Heights

Alipore Close, Lower Parkstone, Poole, BH14 9NS



LUXURY &
PRESTIGE
Exclusive Properties

Can't wait to view in person?

All of our properties feature a professionally produced one minute video, personally introduced by a member of our team.



Simply click on the thumbnail above to let one of our team give you a guided tour of the highlights.

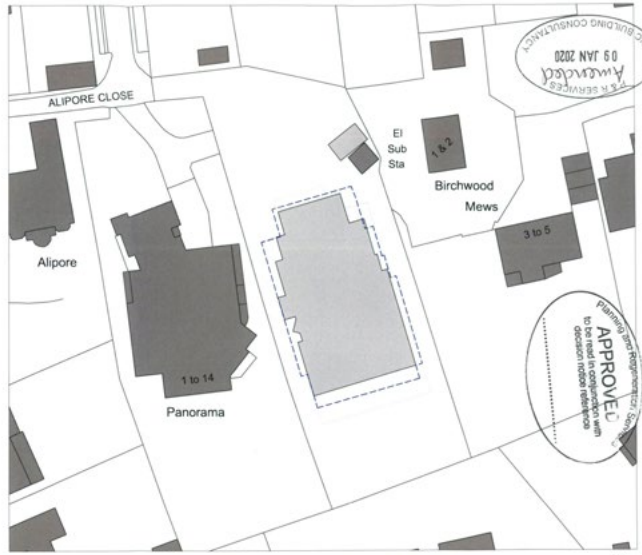
vimeo







Location Plan
Scale 1: 1250



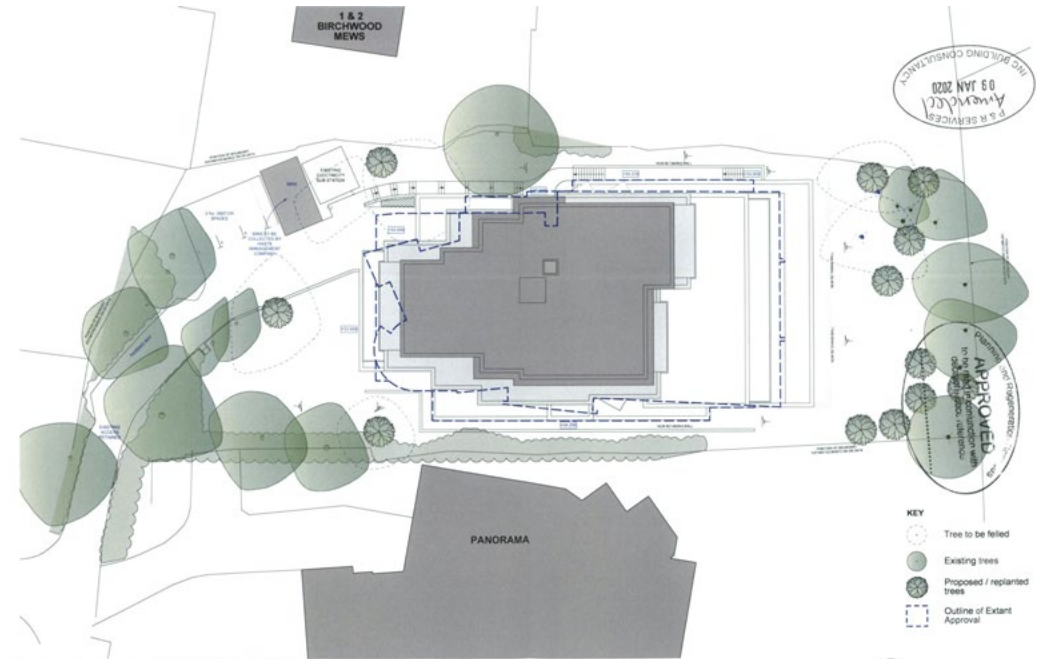
Block Plan
Scale 1: 500

Drawn: AW, Checked: DJ
 Revision A: 2018/11/14, Baseline outline amended, AW
 Revision B: 2018/12/12, Baseline outline amended, JVG
 Revision C: 2020/01/08, Site plan and number of store revised, JVG

Alipore Heights, Alipore Close, Poole | Planning Application

1914 01C | Location and Block Plan | as shown @A3 | July 2019 | davidjames architects & partners ltd

Note: This drawing is the copyright and remains the property of David James Architects & Partners Ltd. ©
 Do not scale from this drawing and check all dimensions on site. Unauthorised use of the drawing for any use is prohibited.



Drawn: AW, Checked: DJ
 Revision A: 2018/11/14, Drawn and existing paving laid out following Planning Comments, AW
 Revision B: 2018/12/12, Line of Lower Ground Floor amended, JVG
 Revision C: 2020/01/08, Site plan and number of store revised, JVG

Alipore Heights, Alipore Close, Poole | Planning Application

1914 02C | Site Plan | 1:250 @A3 | July 2019 | davidjames architects & partners ltd

Note: This drawing is the copyright and remains the property of David James Architects & Partners Ltd. ©
 Do not scale from this drawing and check all dimensions on site. Unauthorised use of the drawing for any use is prohibited.



Drawn: RH, Checked: DJ
 Revision A: 2018/11/14, Baseline outline amended due to changes to Lower Ground Floor following Planning Comments, AW
 Revision B: 2018/12/12, Detail of Baseline and Lower Ground Floor fully agreed out by 10/08/19, JVG
 Revision C: 2020/01/08, Final plan and number of store revised, JVG

Alipore Heights, Alipore Close, Poole | Planning Application

1914 09B | North and East Elevations | 1:200 @A3 | July 2019 | davidjames architects & partners ltd

Note: This drawing is the copyright and remains the property of David James Architects & Partners Ltd. ©
 Do not scale from this drawing and check all dimensions on site. Unauthorised use of the drawing for any use is prohibited.



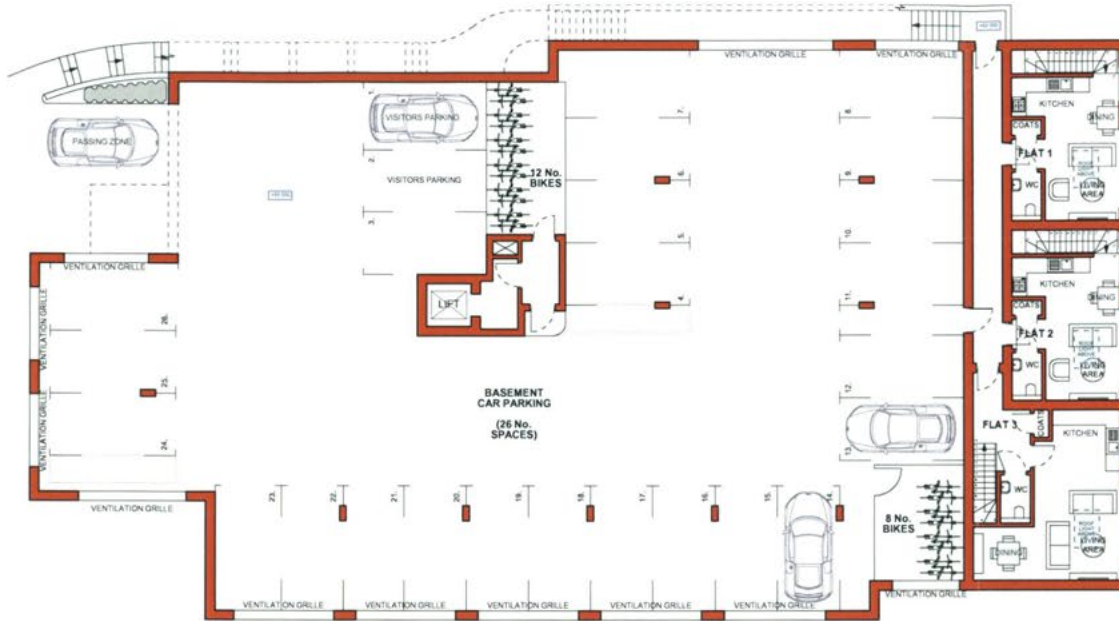
Drawn: RH, Checked: DJ
 Revision A: 2018/11/14, Baseline outline amended due to changes to Lower Ground Floor following Planning Comments, AW

Alipore Heights, Alipore Close, Poole | Planning Application

1914 13A | Street Scene | 1:250 @A3 | July 2019 | davidjames architects & partners ltd

Note: This drawing is the copyright and remains the property of David James Architects & Partners Ltd. ©
 Do not scale from this drawing and check all dimensions on site. Unauthorised use of the drawing for any use is prohibited.

Floorplan



Lower Ground Floor Plan
Scale 1: 200



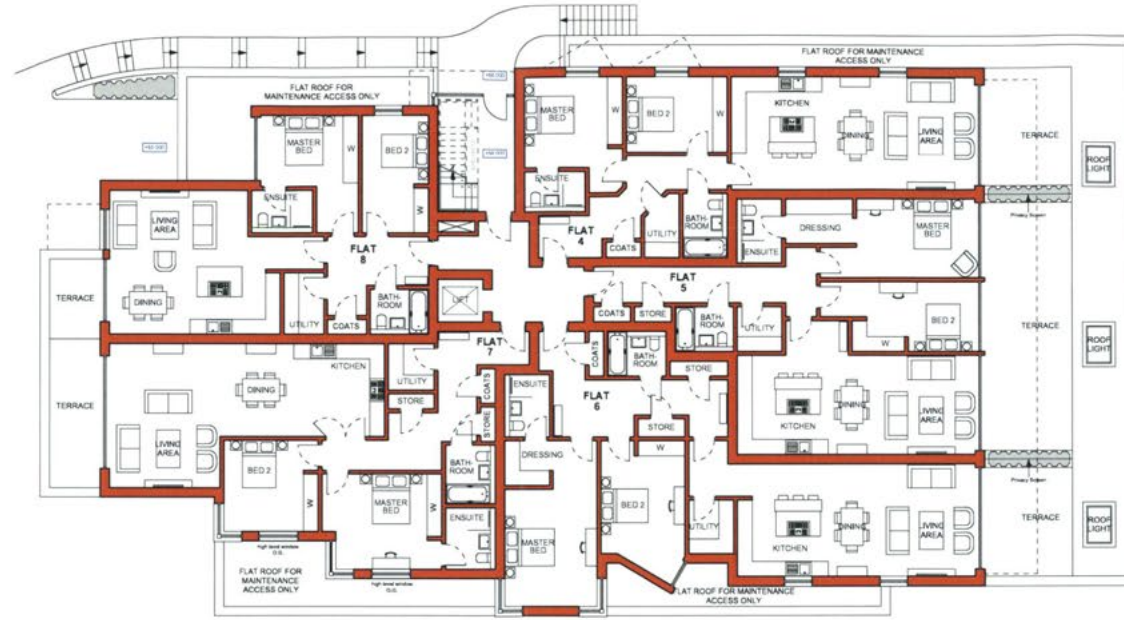
Basement Floor Plan
Scale 1: 200



Drawn	AW	Checked	DJ
-------	----	---------	----

revisions: A_2019.11.14_Space in front of parking bays 1-3 increased following Planning Comments, core layout amended_AW
revisions: B_2019.12.12_Wall of Basement & Lower Ground Floor flats moved out by 100mm_HVG
Balconies @ Lower Ground Floor omitted_HVG





Upper Ground Floor Plan
Scale 1: 200

Planning and Regeneration Services
APPROVED
to be read in conjunction with
decision notice reference

Planning and Regeneration Services
RECEIVED
12 DEC 2019
AMENDED PLAN

Drawn	AW	Checked	DJ
-------	----	---------	----

revisions: A_2019.11.14_Basement / terrace outline amended due to changes to Lower Ground Floor following Planning Comments_AW
revisions: B_2019.12.12_Lower Ground Floor wall amended_HVG
Balconies @ Lower Ground Floor omitted_HVG
High level windows added to Flat 7_HVG



Note: This drawing is the copyright and remains the property of David James Architects & Partners Ltd. ©
Do not scale from this drawing and check all dimensions on site. Unauthorised use of the drawing for any use is prohibited.



First Floor Plan
Scale 1: 200



Drawn	AW	Checked	DJ
-------	----	---------	----

revisions: A_2019.11.14_Basement / terrace outline amended due to changes to Lower Ground Floor following Planning Comments_AW
 revisions: B_2019.12.12_Line of Lower Ground Floor amended_HVG
 High level windows added to Flats 10 & 13_HVG





Second Floor Plan
Scale 1: 200



Drawn	AW	Checked	DJ
-------	----	---------	----

revisions: A_2019.11.14_Basement / terrace outline amended due to changes to Lower Ground Floor following Planning Comments_AW
 revisions: B_2019.12.12_Line of Lower Ground Floor amended_HVG
 High level windows added to Flats 15 & 17_HVG



ACCOMMODATION SCHEDULE

Flat 1	70 sqm	753 sqft
Flat 2	70 sqm	753 sqft
Flat 3	83 sqm	893 sqft
Flat 4	103 sqm	1108 sqft
Flat 5	113 sqm	1216 sqft
Flat 6	128 sqm	1377 sqft
Flat 7	121 sqm	1302 sqft
Flat 8	94 sqm	1012 sqft
Flat 9	94 sqm	1012 sqft
Flat 10	106 sqm	1140 sqft
Flat 11	113 sqm	1216 sqft
Flat 12	128 sqm	1377 sqft
Flat 13	121 sqm	1302 sqft
Flat 14	94 sqm	1012 sqft
Flat 15	105 sqm	1130 sqft
Flat 16	119 sqm	1281 sqft
Flat 17	101 sqm	1087 sqft
Flat 18	97 sqm	1044 sqft
Flat 19	91 sqm	979 sqft
Flat 20	105 sqm	1130 sq ft

Total **20 units**
2056 sqm **22,124 sqft**



Third Floor Plan
 Scale 1: 200



Drawn	AW	Checked	DJ
-------	----	---------	----

revisions: A_2019.11.14_Basement / terrace outline amended due to changes to Lower Ground Floor following Planning Comments_AW
 revisions: B_2019.12.12_Line of Lower Ground Floor amended_HVG
 Accommodation schedule amended, Flats 1, 2 & 3 revised



Summary

Development opportunity with full planning permission to construct 20 luxury apartments located on a quiet cul-de-sac. Alipore Heights, Alipore Close, Lower Parkstone is conveniently located in between the Ashley Cross Village and Penn Hill shopping parade with a variety of restaurants, shopping facilities as well as national and local transport links are close by.

The current owner has obtained planning permission (APP/19/01211/F) to demolish the existing building and construct 20 spacious two bedroom apartments with outdoor areas and underground parking. The majority of the apartments will benefit from fantastic views out towards Poole Harbour and beyond. This unique site is circa 0.6 acres and is rare in this location.

This would be a fantastic development opportunity for a developer looking to build a statement block of apartments and the finished apartments would attract a lot of interest on the open market. Potential purchasers are invited to view from inside the existing building in order to fully appreciate the elevated position and distant views from this peaceful location.

For all enquiries please call the office on 01202 007373. Luxury & Prestige are to be retained by any potential purchaser at 1%+VAT (1.2% inc. VAT) of the agreed price in the event of successfully completed transaction.

- Rare development opportunity
- Planning Permission approved
- Demolish existing & construct 20 apartments
- All two bedroom apartments
- Underground parking
- Units range from 753-1,377 square feet
- Great views from majority of apartments
- Located on a quiet cul-de-sac
- Approx. 0.6 acre plot
- For more info call 01202 007373

Details

Guide Price: OIEO £2,500,000

Tenure: Freehold

Stamp Duty: Advice should be sought



LUXURY & PRESTIGE

Exclusive Properties



Steve Isaacs
Director
07970 878106
steve@luxuryandprestige.co.uk



Harriet Towing
Head of Sales
07809 908718
harriet@luxuryandprestige.co.uk



Thomas Powner
Residential Sales
07437 491094
tom@luxuryandprestige.co.uk



Asia Roberston
Social Media Manager
07484 719645
asia@luxuryandprestige.co.uk



Valentina Morana
Marketing Assistant
01202 007373
valentina@luxuryandprestige.co.uk



David Chissell
Director
07795 835647
david@luxuryandprestige.co.uk



Adrianna Ciereszko
Photographer / Marketing Manager
01202 007373
adrianna@luxuryandprestige.co.uk



Ryan Horan
Land & New Homes
07512 196688
ryan@luxuryandprestige.co.uk



Jo Bound
Search Agent
01202 007373
jbound@luxuryandprestige.co.uk

Get In Touch

In Person: 28A Haven Road
Canford Cliffs
Poole
BH13 7LP

By Phone: 01202 007373

By Email: info@luxuryandprestige.co.uk

Online: www.luxuryandprestige.co.uk

Facebook: facebook.com/luxuryandprestige

Instagram: @luxuryprestigerealty

Property Ref: L0067



Important notice

Luxury and Prestige Realty Ltd wishes to inform prospective purchasers that we have prepared these sales particulars as a general guide. We have not carried out a detailed survey, nor tested the services, appliances and specific fittings. Room sizes are approximate and rounded; they are taken between internal wall surfaces and therefore include cupboards/shelves etc. Accordingly they should not be relied upon for carpets and furnishings. Formal notice is also given that all fixtures and fittings, carpeting, curtains/blinds and kitchen equipment, whether fitted or not, are deemed removable by the vendor unless specifically itemised within these particulars.