



Apartment 26 Radcliffe Court

51 Manor Road, Bournemouth, Dorset, BH1 3FH





RADCLIFFE COURT

EAST CLIFF

£1,500,000

All of our properties are presented with a professionally produced one minute video, personally introduced by a member of our team as well as a fully interactive 3D tour.

Of course, if you would like more information, or would like to arrange a viewing, please contact us on the details below:

01202 007373

info@luxuryandprestige.co.uk
www.luxuryandprestige.co.uk

Please click on the image above to view our short video introduction to this property.

Interactive 3D Tour

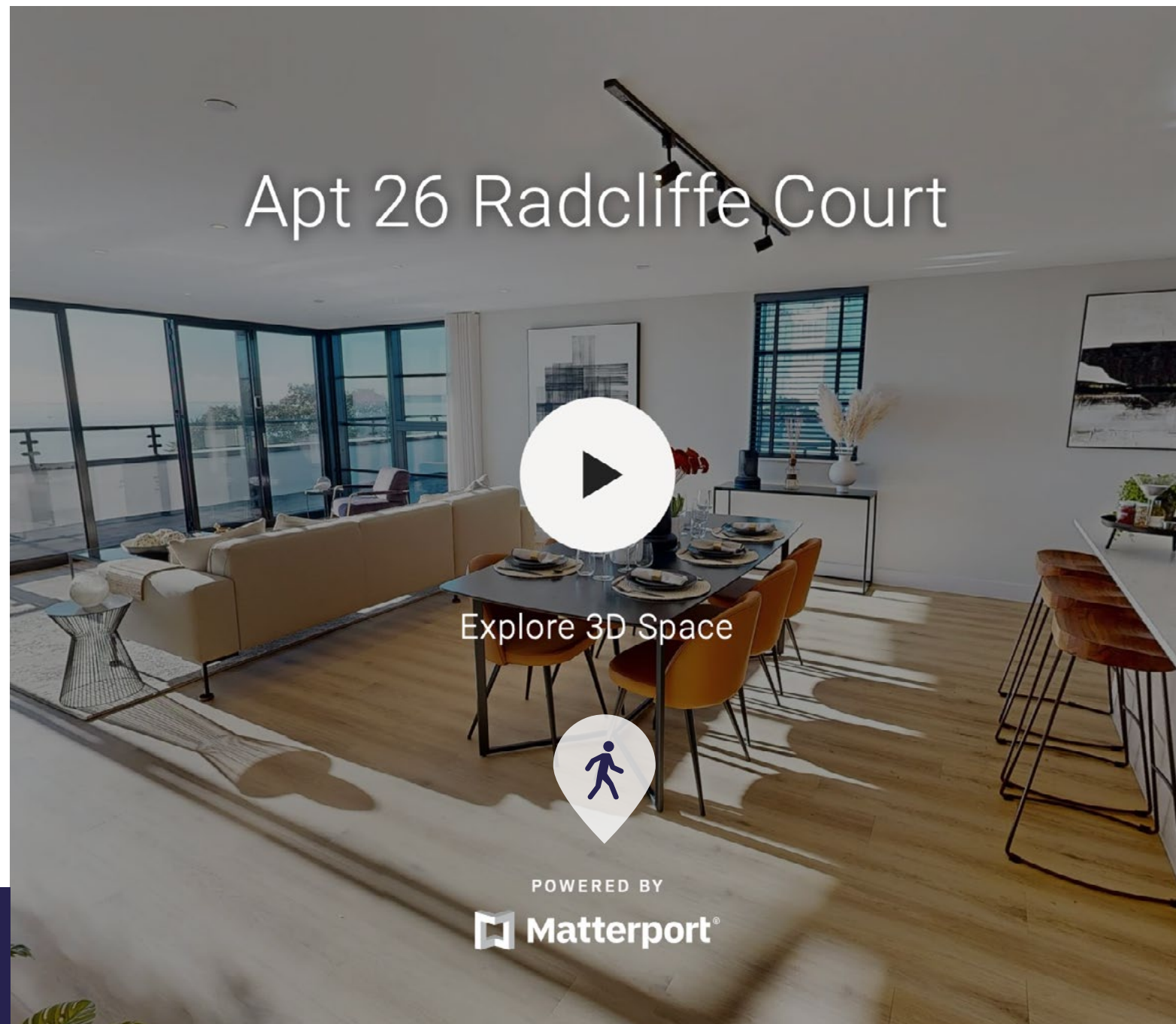
Can't wait to view in person?

Simply click on the thumbnail opposite to take a step inside and explore this beautiful home.

This fully immersive experience allows you to 'click and drag' your way through the property at your own pace. It is best viewed on a desktop screen or in landscape mode on your smartphone or tablet.

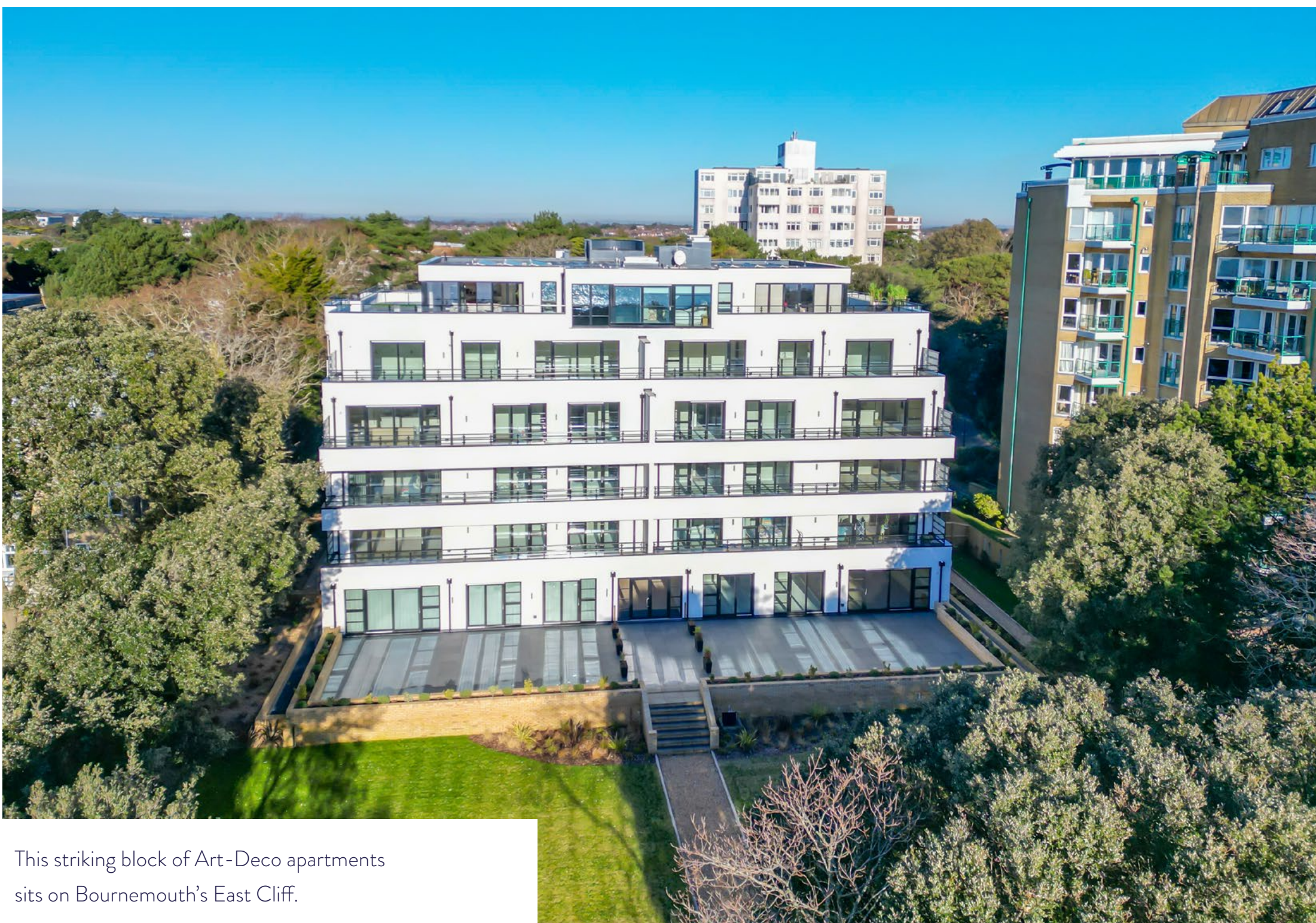
01202 007373

info@luxuryandprestige.co.uk
www.luxuryandprestige.co.uk



Please click on the image above to view our interactive 3D tour of this property.



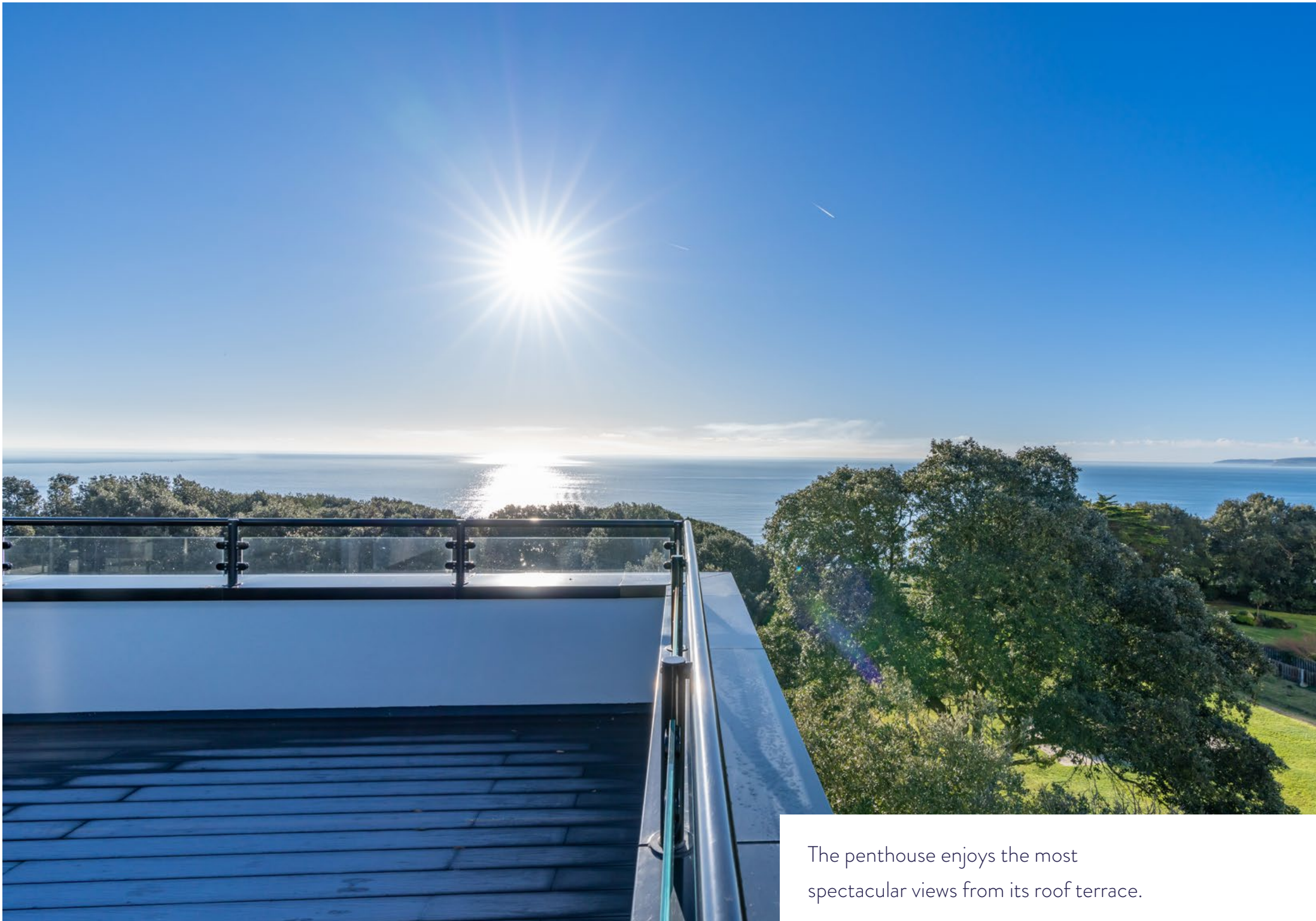


This striking block of Art-Deco apartments sits on Bournemouth's East Cliff.

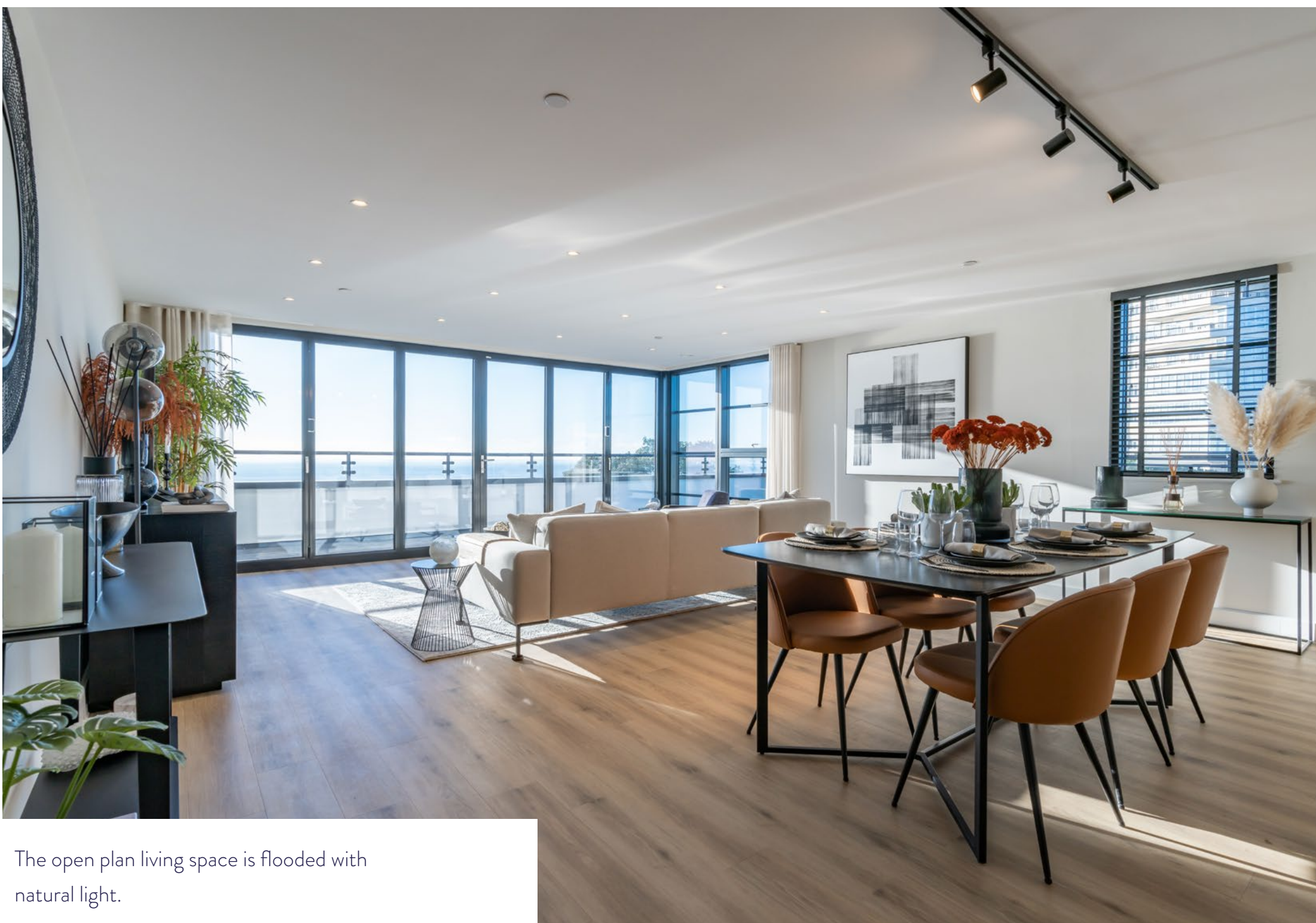


It sits within stunning grounds that lead directly to the cliff top.





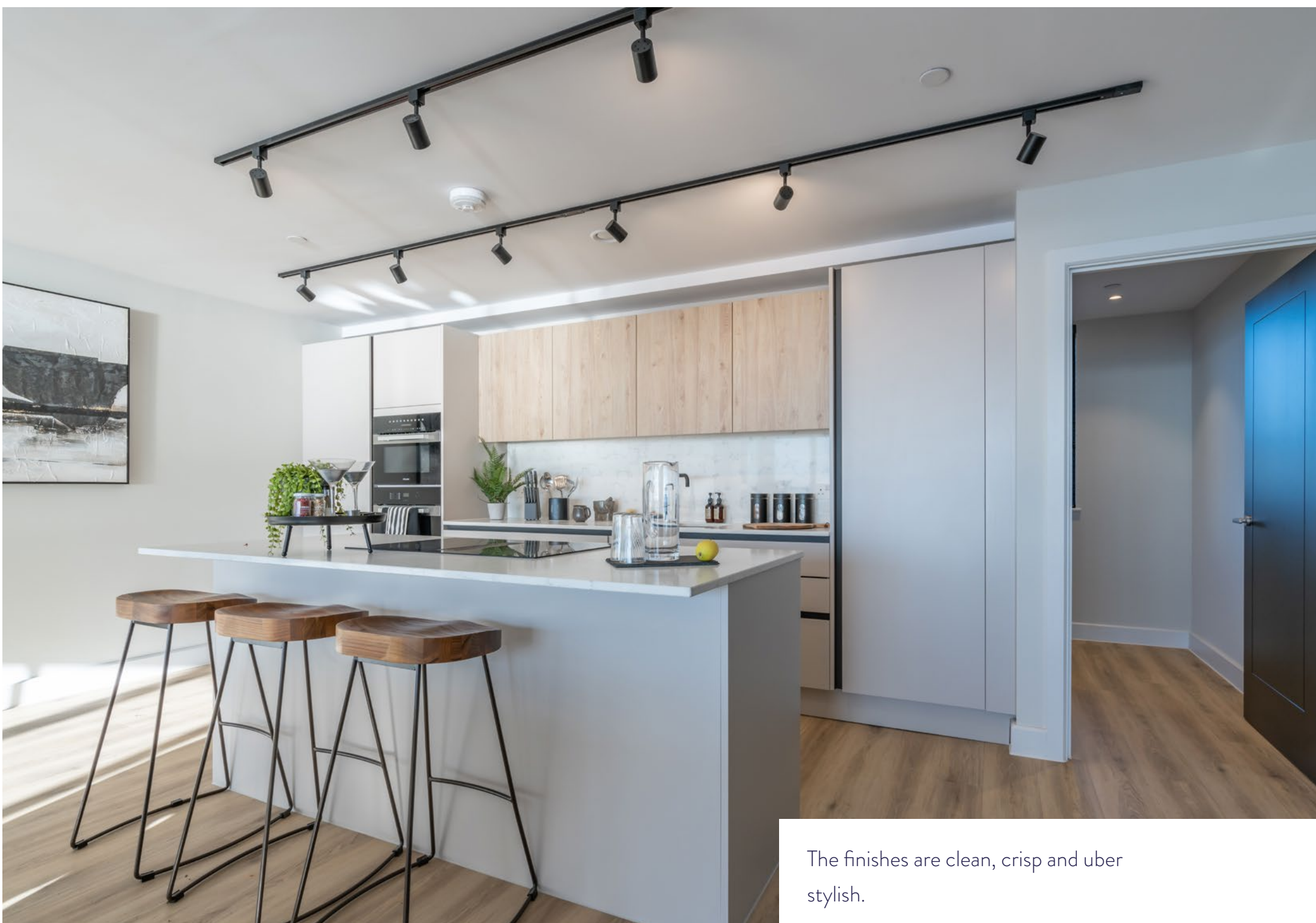
The penthouse enjoys the most spectacular views from its roof terrace.



The open plan living space is flooded with natural light.



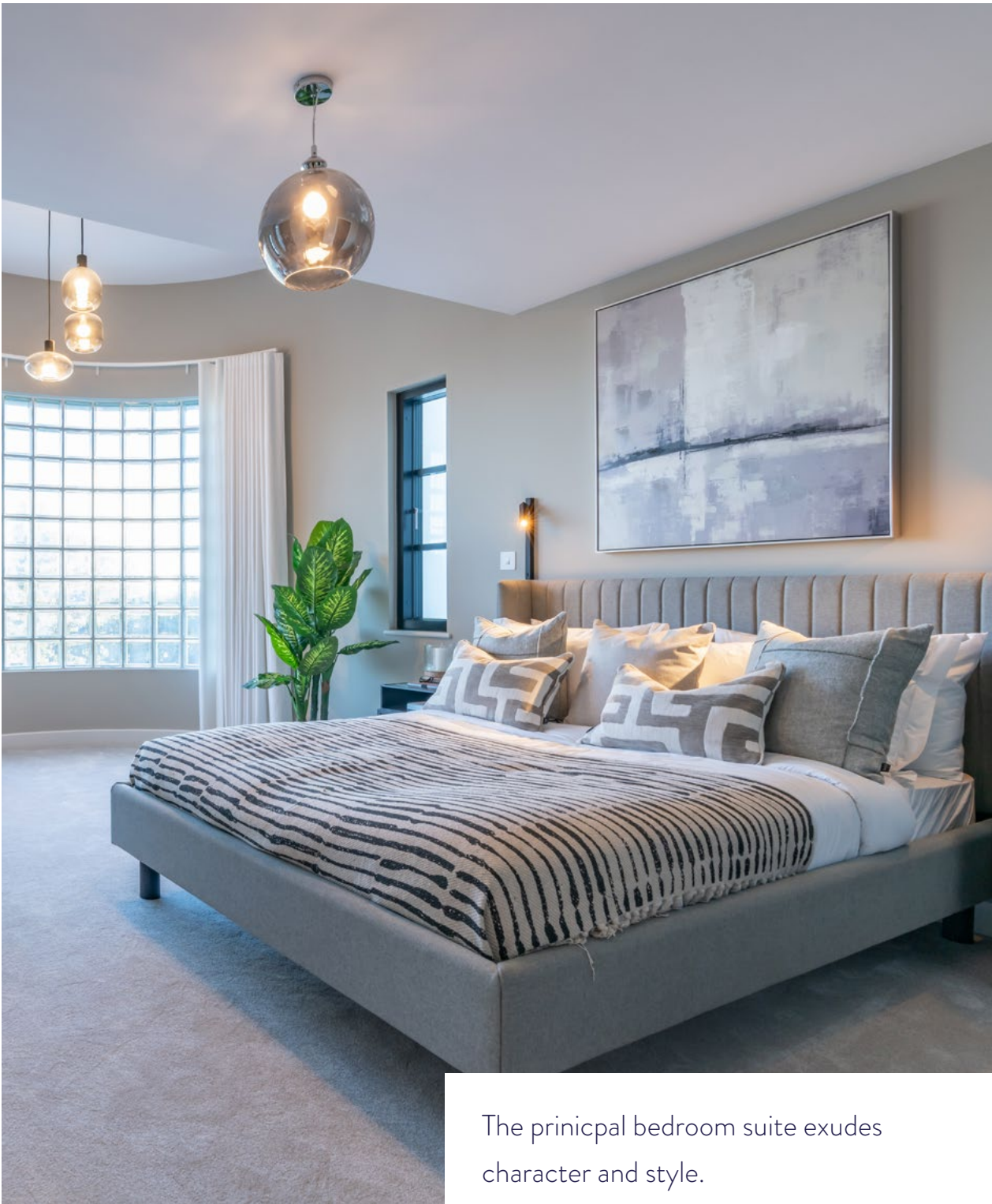
Every inch has been carefully thought through and meticulously designed.



The finishes are clean, crisp and uber stylish.



The view from the main living space is truly panoramic.

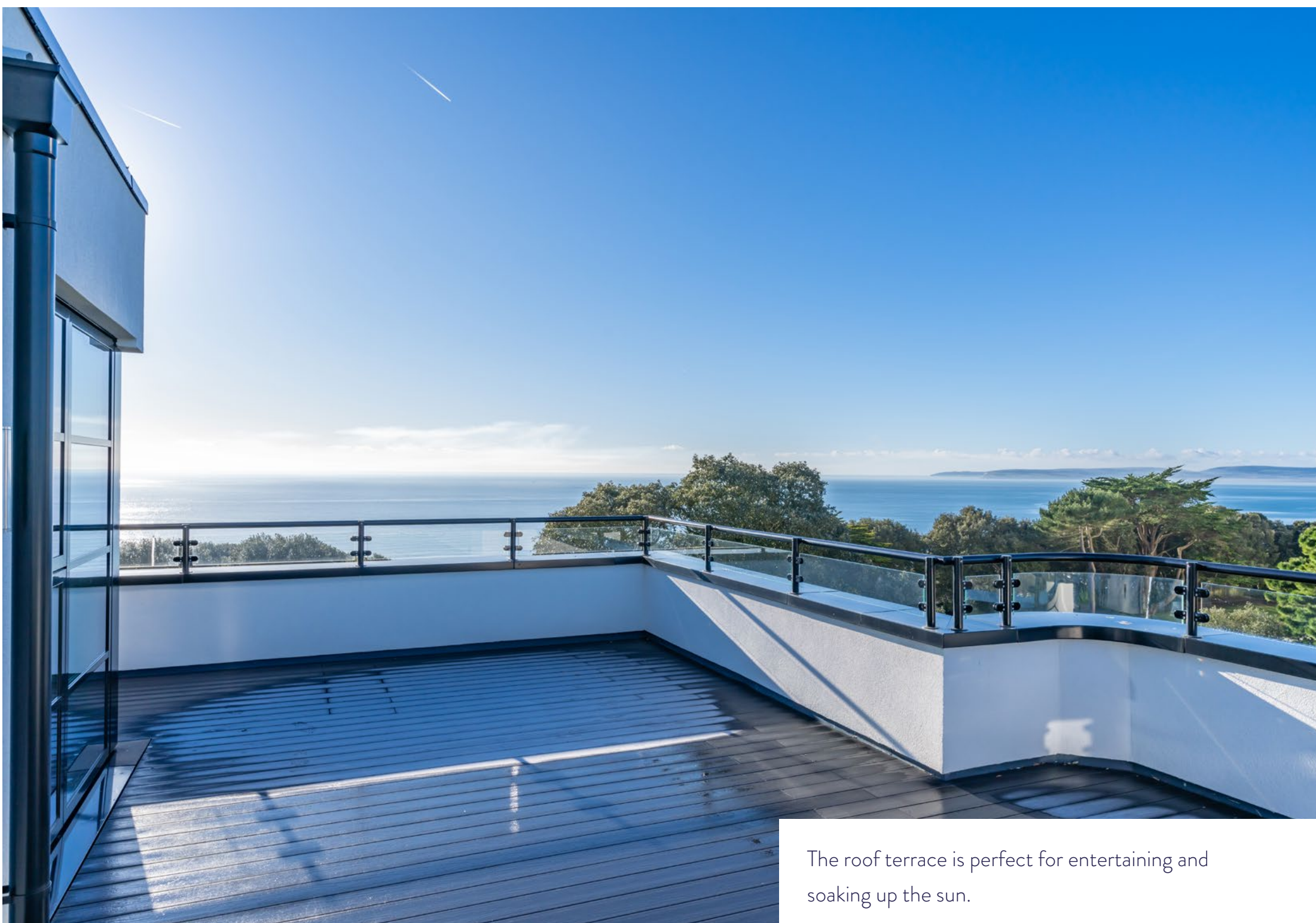


The principal bedroom suite exudes character and style.





There are a total of three bedrooms and three bathrooms.

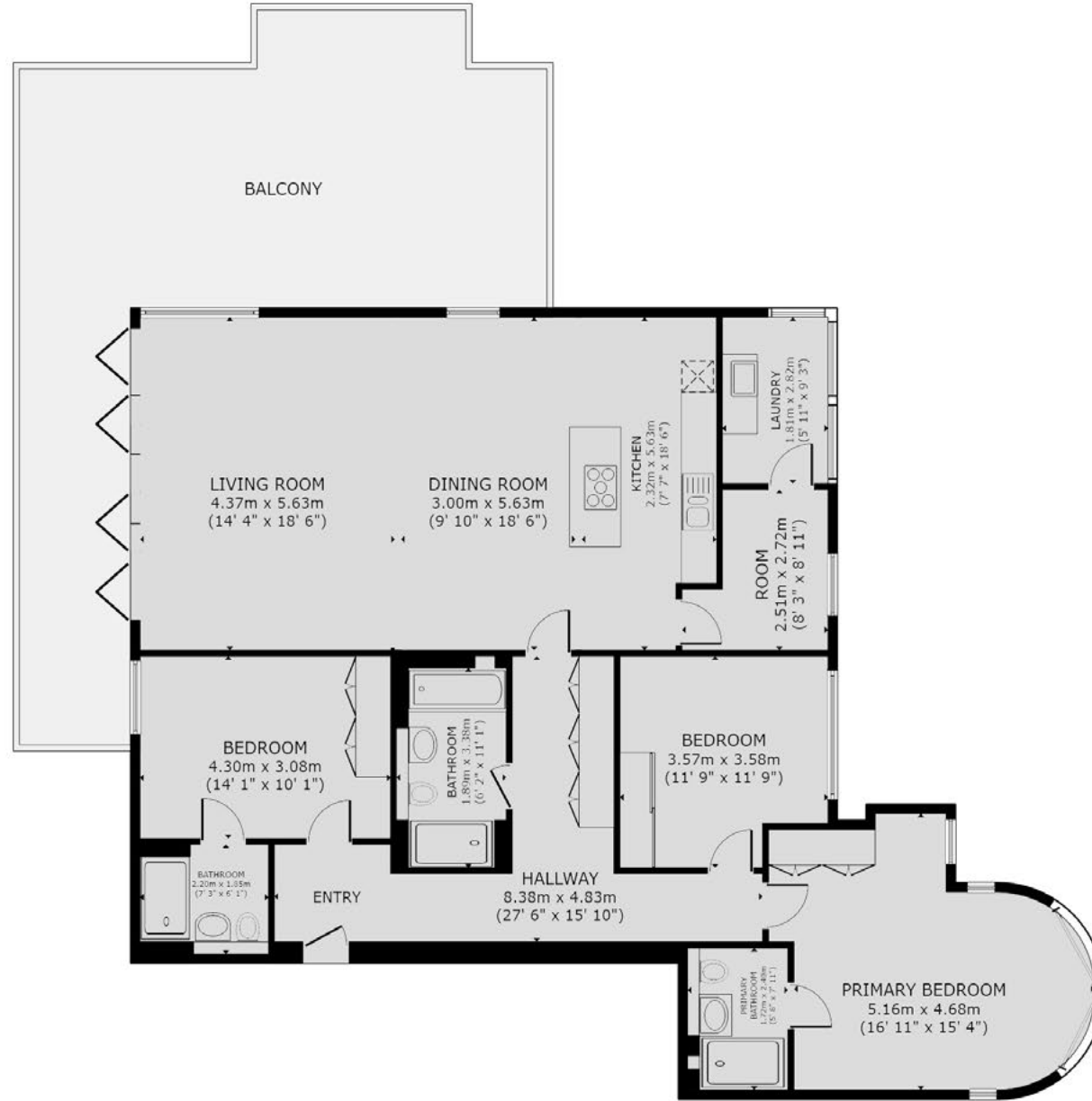


The roof terrace is perfect for entertaining and soaking up the sun.



The cliff top is accessed directly from the grounds with the beaches below.

Apartment 26 Radcliffe Court, 51 Manor Road, Bournemouth, BH1 3HH



GROSS INTERNAL AREA: 1,600 sq. ft., 148.7 m2
BALCONY: 585 sq. ft., 54.4 m2

SIZES AND DIMENSIONS ARE APPROXIMATE, ACTUAL MAY VARY.

Summary

Radcliffe Court is a beautifully designed Art Deco apartment block built to an exceptional standard. This new build development offers 26 luxury homes with a large selection of apartments enjoying panoramic sea views.

The development comprises a range of 2 and 3 bedroom apartments as well as two duplex apartments and a penthouse. All the apartments benefit from their own private outside areas along with landscaped communal grounds with a water feature and seating area to be enjoyed by all the residents.

There is also a footpath that leads you directly to the cliff top providing easy access to Bournemouth's award winning beaches below.

All the apartments benefit from secure underground parking along with lift access to all floors. Radcliffe Court is located on a tree lined premier road on Bournemouth's beautiful East Cliff, the town centre is within walking distance as well national and local transport links.

- Unique luxury new build development
- Stunning penthouse apartment
- Three beautifully appointed bathrooms
- Spacious open plan living space
- Separate utility and pantry
- Three double bedrooms with fitted wardrobes
- Large private terrace with sea views
- Secure underground parking with bike storage
- Beautifully landscaped communal grounds
- Ready for occupation and available to view now!

Guide Price:	£1,500,000
Tenure:	Leasehold
Lease Length:	125 years with automatic right to ownership in the Freehold
Stamp Duty:	Main Home £91,250* Additional Home £136,250* (*based on guide price)
Lease Length:	TBA
Maintenance:	TBA
Council Tax:	Band TBC (2023/2024 £x,xxx.xx)

EPC:

01202 007373

info@luxuryandprestige.co.uk
www.luxuryandprestige.co.uk



LUXURY &
PRESTIGE
Exclusive Properties



Steve Isaacs

07970 878106

steve@luxuryandprestige.co.uk



Harriet Towing

07809 908718

harriet@luxuryandprestige.co.uk



Asia Robertson

01202 007373

asia@luxuryandprestige.co.uk



Ryan Horan

07512 196688

ryan@luxuryandprestige.co.uk



David Chissell

07795 835647

david@luxuryandprestige.co.uk



Adrianna Cierieszko

01202 007373

adrianna@luxuryandprestige.co.uk



Jo Bound

01202 007373

jbound@luxuryandprestige.co.uk



Thomas Powner

01202 007373

tom@luxuryandprestige.co.uk

Get in touch

In person: We are located at
28A Haven Road,
Canford Cliffs,
Poole, BH13 7LP.
We would love to see you
for a cup of tea or coffee.

By phone: 01202 007373

By email: info@luxuryandprestige.co.uk

Property ref: 0923



Important notice

Luxury and Prestige Realty Ltd wishes to inform prospective purchasers that we have prepared these sales particulars as a general guide. We have not carried out a detailed survey, nor tested the services, appliances and specific fittings. Room sizes are approximate and rounded; they are taken between internal wall surfaces and therefore include cupboards/shelves etc. Accordingly they should not be relied upon for carpets and furnishings. Formal notice is also given that all fixtures and fittings, carpeting, curtains/blinds and kitchen equipment, whether fitted or not, are deemed removable by the vendor unless specifically itemised within these particulars.