

← C →  
BLOCK C



Strawberry Star

FLOOR PLANS AND TYPOLOGIES



Specification

GENERAL

- Wood plank effect flooring to hallway
- Walls and ceilings are painted in neutral contemporary colours. All joinery is primed and decorated with an eggshell finish
- Contemporary screwless flush plate light switches and electric sockets throughout
- Stainless steel ironmongery

LIVING / DINING

- Wood plank effect flooring
- Floor to ceiling windows
- TV socket set to living room (Sky+) subject to subscription. All TV socket sets to include digital radio and terrestrial sockets
- White telephone and data sockets to living/ dining area
- Pendant lighting to ceiling

KITCHENS

- Wood plank effect flooring
- Bespoke, single tone, designer kitchen units with base level finish, soft close doors and concealed handles
- Vinyl worktop with porcelain tile splashback
- Zanussi integrated electric appliances to include:
  - 1. Single low-level oven electric induction hob
  - 2. Integrated cooker hood
  - 3. Washing machine (freestanding if within utility cupboard)
  - 4. Fridge/Freezer
- Stainless steel bowl under-mounted sink with contemporary mixer-tap and drainer
- Low energy unit under lighting
- Plumbed for dishwasher

ENTRANCE

- Wood plank effect flooring
- Audio/visual entry phone system connected to communal entrance door

Management

The wider scheme is managed by Strawberry Star Asset Management.

COMMUNAL AREAS

- 24/7 concierge & services
- Lifts to all apartment levels
- Independent entrance foyers serving each core with stair and lift access
- Multi levelled private residents roof gardens

BEDROOMS

- Wood plank effect flooring
- Floor to ceiling windows
- TV socket set to all bedrooms (Sky) subject to subscription
- All TV socket sets to include digital radio and terrestrial sockets
- Pendant ceiling lights
- Telephone and data extension sockets to all bedrooms

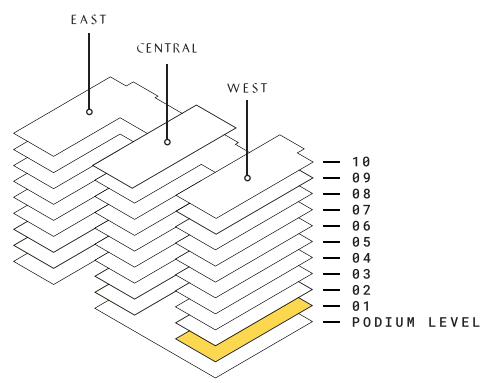
BATH & SHOWER

- Large format tiled floor and porcelain tiled walls to wet areas
- WHITE BATHROOM SUITE FEATURING:
- Steel/ enamel shower tray, chrome adjustable overhead shower column and low level hose and handset
  - Steel/ enamel bath (selected apartments) with integrated bath filler and waste system
  - Chrome adjustable overhead shower column and low level hose and handset
  - Contemporary floor mounted WC, chrome wall flush, push plate
  - Semi-recessed 'cube' basin with chrome mixer-tap and pop-up plug
  - Chrome plated, electric heated towel-rail
  - Clear glass frameless bath screen/shower enclosure





FLOOR:  
01



UNION  
EAST, CENTRAL & WEST



FLOOR 01:  
WEST CORE

| UNIT | TYPE  | SQM  | SQFT |
|------|-------|------|------|
| C-01 | 2 BED | 70   | 753  |
| C-02 | 2 BED | 57.5 | 619  |
| C-03 | SUITE | 37   | 398  |
| C-04 | 1 BED | 47   | 506  |
| C-05 | 1 BED | 47.2 | 508  |
| C-06 | 1 BED | 47.1 | 507  |
| C-07 | 2 BED | 68.3 | 735  |
| C-08 | 2 BED | 68.7 | 739  |
| C-09 | 2 BED | 70.4 | 758  |
| C-10 | 2 BED | 71.8 | 773  |
| C-11 | SUITE | 37.6 | 405  |
| C-12 | SUITE | 38.4 | 413  |
| C-13 | 2 BED | 59.1 | 636  |

2 BEDROOM  
2 BATHROOM

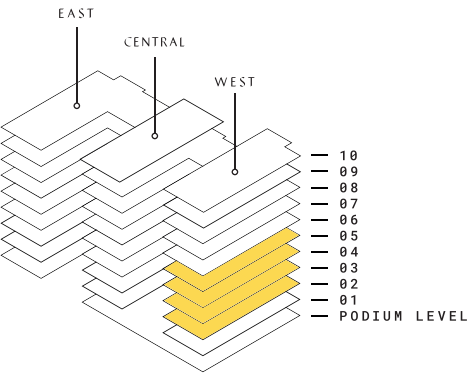
2 BEDROOM  
1 BATHROOM

1 BEDROOM  
APARTMENT

SUITES



FLOOR:  
02,03,04,05



UNION  
EAST, CENTRAL & WEST



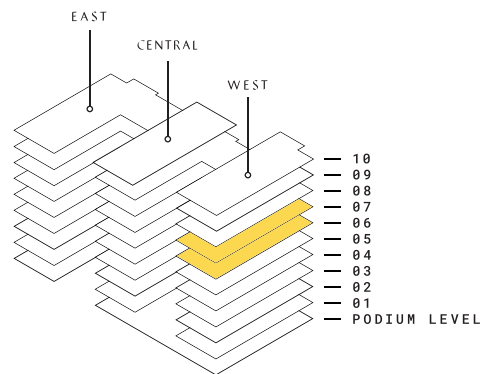
FLOOR 02,03,04,05:  
WEST CORE

| UNIT | TYPE  | SQM  | SQFT |
|------|-------|------|------|
| C-01 | 2 BED | 70   | 753  |
| C-02 | 2 BED | 57.5 | 619  |
| C-03 | SUITE | 37   | 398  |
| C-04 | 1 BED | 47   | 506  |
| C-05 | 1 BED | 47.2 | 508  |
| C-06 | 1 BED | 47.1 | 507  |
| C-07 | 2 BED | 68.3 | 735  |
| C-08 | 2 BED | 68.7 | 739  |
| C-09 | 1 BED | 47.4 | 510  |
| C-10 | 2 BED | 67.5 | 727  |
| C-11 | 1 BED | 47   | 506  |
| C-12 | SUITE | 37.6 | 405  |
| C-13 | SUITE | 38.4 | 413  |
| C-14 | 2 BED | 59.1 | 636  |

2 BEDROOM 2 BATHROOM    2 BEDROOM 1 BATHROOM    1 BEDROOM APARTMENT    SUITES



FLOOR:  
06,07



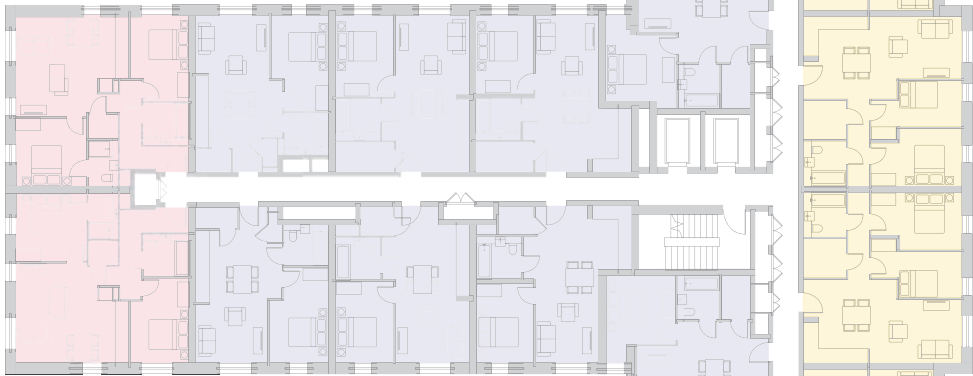
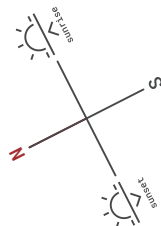
UNION  
EAST, CENTRAL & WEST



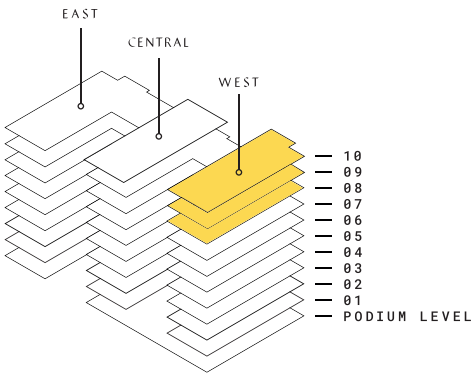
FLOOR 06,07:  
WEST CORE

| UNIT | TYPE  | SQM  | SQFT |
|------|-------|------|------|
| C-01 | 2 BED | 70   | 753  |
| C-02 | 2 BED | 57.5 | 619  |
| C-03 | SUITE | 37   | 398  |
| C-04 | 1 BED | 47   | 506  |
| C-05 | 1 BED | 47.2 | 508  |
| C-06 | 1 BED | 47.1 | 507  |
| C-07 | 2 BED | 68.3 | 735  |
| C-08 | 2 BED | 68.7 | 739  |
| C-09 | 1 BED | 47.4 | 510  |
| C-10 | SUITE | 37   | 398  |
| C-11 | SUITE | 37   | 398  |
| C-12 | SUITE | 37   | 398  |
| C-13 | SUITE | 37.6 | 405  |
| C-14 | SUITE | 38.4 | 413  |
| C-15 | 2 BED | 59.1 | 636  |

2 BEDROOM 2 BATHROOM    2 BEDROOM 1 BATHROOM    1 BEDROOM APARTMENT    SUITES



FLOOR:  
08,09,10



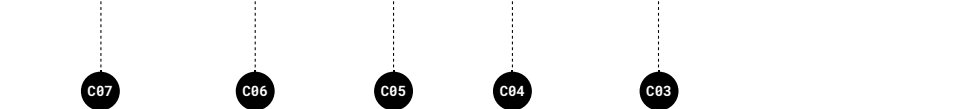
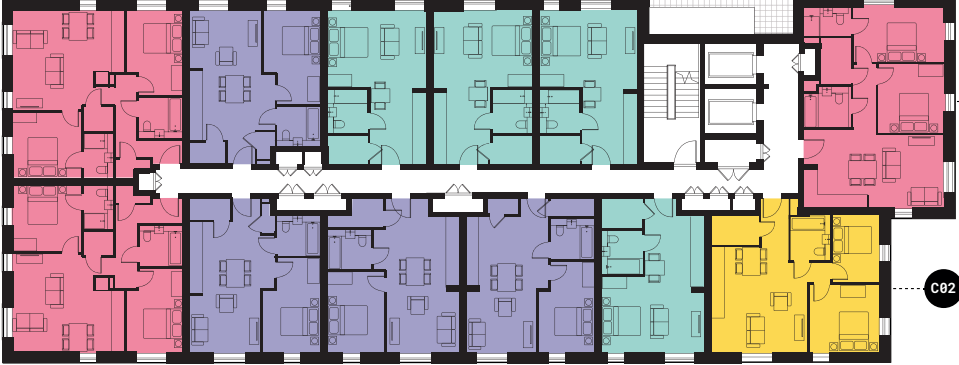
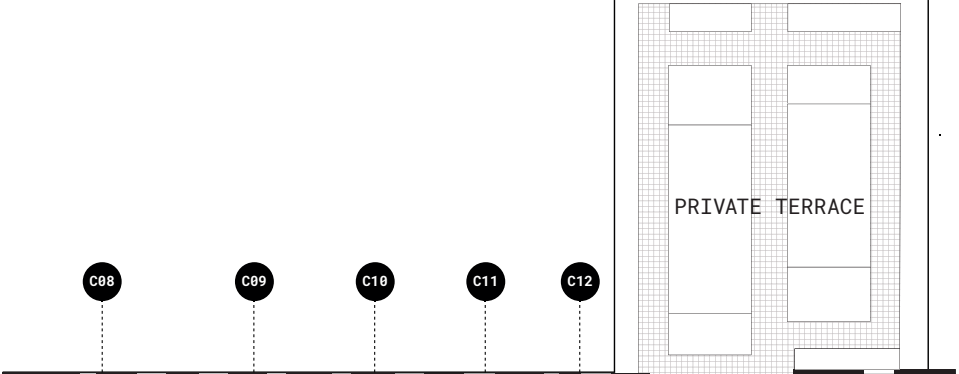
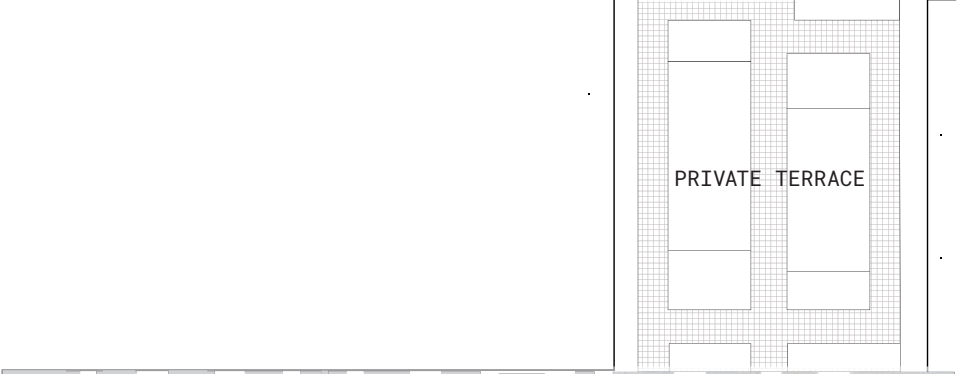
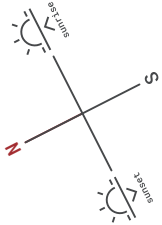
UNION  
EAST, CENTRAL & WEST



FLOOR 08,09,10:  
WEST CORE

| UNIT | TYPE  | SQM  | SQFT |
|------|-------|------|------|
| C-01 | 2 BED | 68.1 | 733  |
| C-02 | 2 BED | 57.5 | 619  |
| C-03 | SUITE | 37   | 398  |
| C-04 | 1 BED | 47   | 506  |
| C-05 | 1 BED | 47.2 | 508  |
| C-06 | 1 BED | 47.1 | 507  |
| C-07 | 2 BED | 68.3 | 735  |
| C-08 | 2 BED | 68.7 | 739  |
| C-09 | 1 BED | 47.4 | 510  |
| C-10 | SUITE | 37   | 398  |
| C-11 | SUITE | 37   | 398  |
| C-12 | SUITE | 37   | 398  |

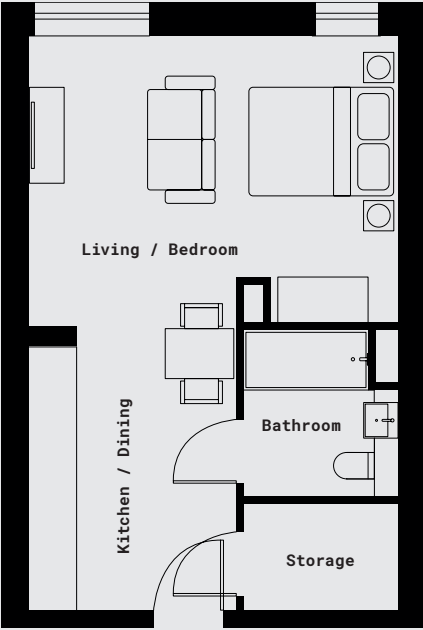
2 BEDROOM  
2 BATHROOM  
2 BEDROOM  
1 BATHROOM  
1 BEDROOM  
APARTMENT  
SUITES



TYPICAL SUITE

These typical suites have been designed to maximise the space, making the apartments perfect for entertaining and relaxing alike.

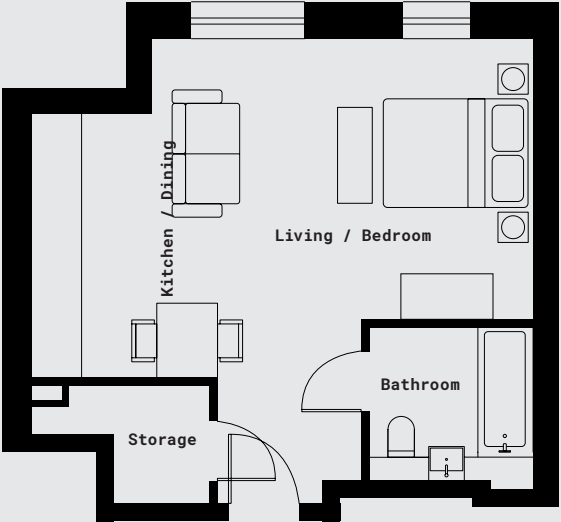
V1\*



37m<sup>2</sup> (398ft<sup>2</sup>)

- Kitchen/Dining**  
2.7m x 3.8m (8'10" x 12'5")
- Living/Bedroom**  
4.9m x 3.8m (16'1" x 12'6")
- Bathroom**  
2.0m x 2.1m (6'7" x 6'11")

V2



37m<sup>2</sup> (398ft<sup>2</sup>)

- Kitchen/Dining**  
3.3m x 2.3m (10'10" x 7'7")
- Living/Bedroom**  
3.7m x 5.0m (12'2" x 16'5")
- Bathroom**  
2.0m x 2.2m (6'7" x 7'3")

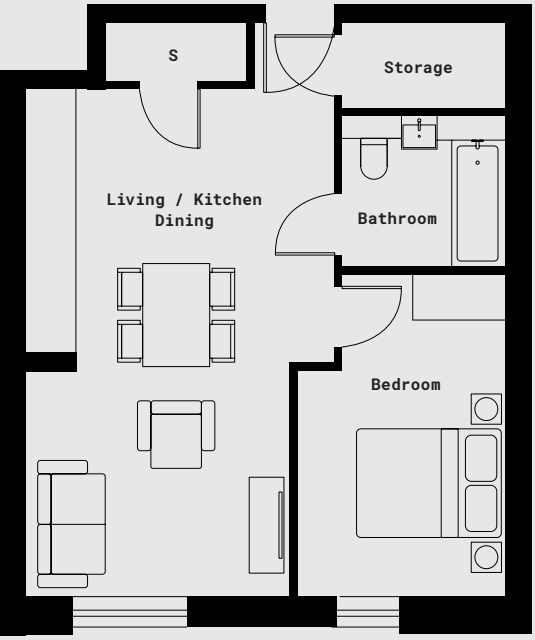
TYPICAL SUITE



TYPICAL 1 BEDROOM APARTMENT

Suitable for upto 2 people, these perfectly formed 1-bedroom apartments maximise the living space, ensuring there's a place for everything.

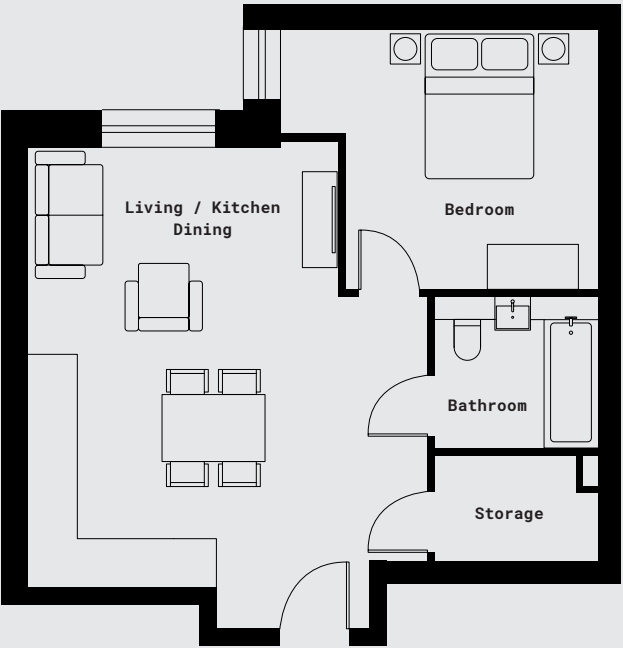
V1\*



47m<sup>2</sup> (506ft<sup>2</sup>)

- Kitchen/Dining**  
2.7m x 3.8m (8'10" x 12'6")
- Living**  
3.5m x 3.1m (11'6" x 10'2")
- Bedroom**  
2.8m x 4.5m (9'2" x 14'9")
- Bathroom**  
2.1m x 2.0m (6'11" x 6'7")

V2



50m<sup>2</sup> (538ft<sup>2</sup>)

- Kitchen/Dining**  
3.1m x 3.4m (10'2" x 11'2")
- Living**  
2.7m x 4.1m (8'10" x 13'5")
- Bedroom**  
3.4m x 4.1m (11'2" x 13'5")
- Bathroom**  
2.0m x 2.2m (6'7" x 7'3")

TYPICAL 1 BEDROOM APARTMENT



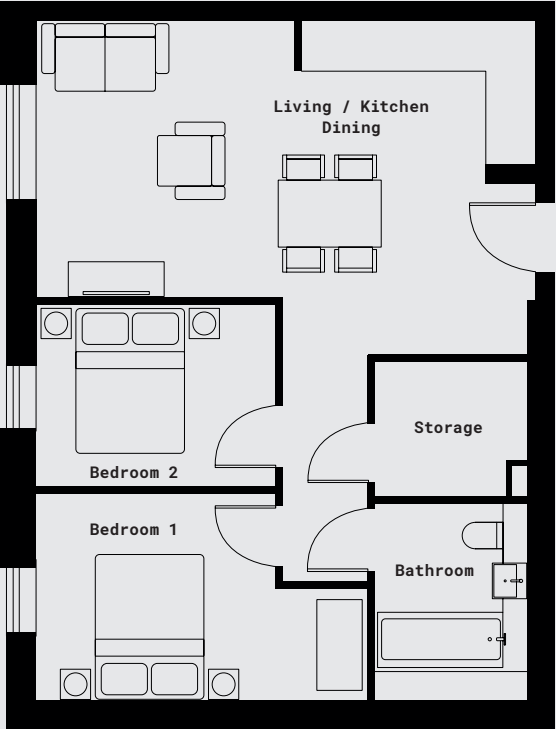
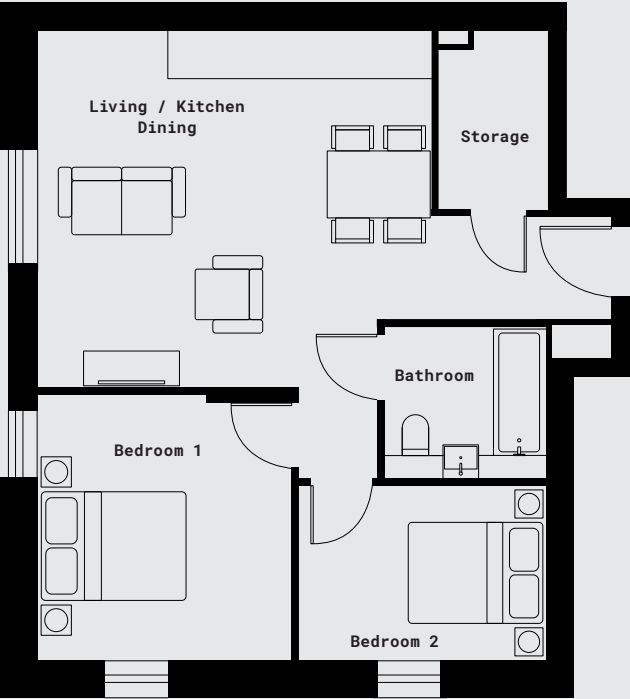


TYPICAL 2 BEDROOM 1 BATHROOM APARTMENT

Suitable for upto 4 people. These spacious apartments feature a second bedroom with enough space for a double-bed, perfect for when guests come to stay or an office away from work.

V1\*

V2\*



57m<sup>2</sup> (613ft<sup>2</sup>)

**Kitchen/Dining**

3.8m x 3.4m (19'0" x 11'2")

**Living**

4.1m x 3.4m (13'5" x 11'2")

**Bedroom 1**

3.5m x 3.3m (11'6" x 10'10")

**Bedroom 2**

2.3m x 3.3m (7'7" x 10'10")

**Bathroom**

2.0m x 2.2m (6'7" x 7'3")

58m<sup>2</sup> (624ft<sup>2</sup>)

**Kitchen/Dining**

3.3m x 4.4m (10'10" x 14'5")

**Living**

3.3m x 3.6m (10'10" x 11'10")

**Bedroom 1**

4.4m x 2.8m (14'5" x 9'2")

**Bedroom 2**

3.2m x 2.4m (10'6" x 7'11")

**Bathroom**

2.0m x 2.2m (6'7" x 7'3")

TYPICAL 2 BEDROOM 1 BATHROOM APARTMENT

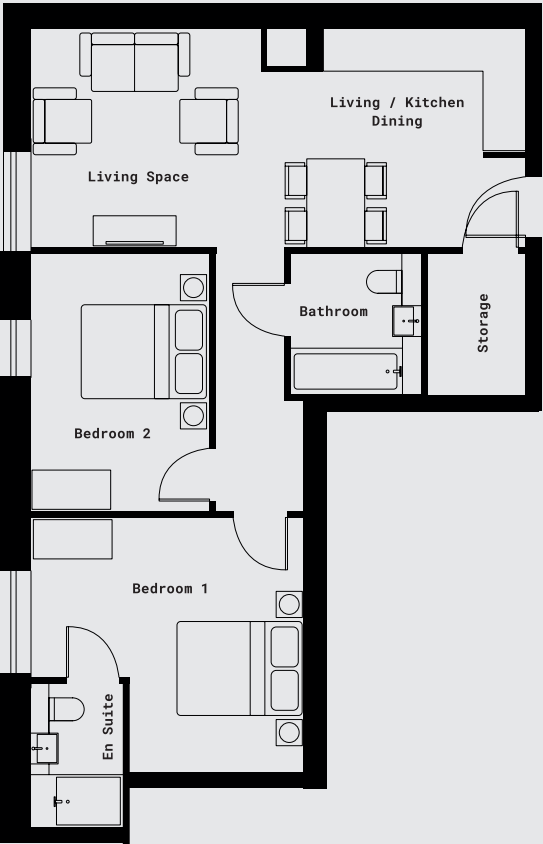
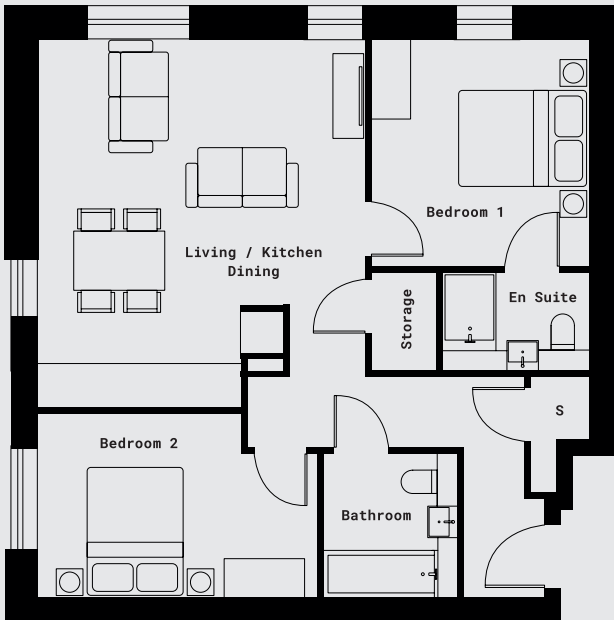


TYPICAL 2 BEDROOM 2 BATHROOM APARTMENT

These 2-bedroom apartments are designed to allow for upto 4 people comfortably, with master en suite and separate bathroom and large open-plan living space.

V1\*

V2



67m<sup>2</sup> (721ft<sup>2</sup>)

68m<sup>2</sup> (732ft<sup>2</sup>)

Kitchen/Dining

2.7m x 3.7m (8'10" x 12'2")

Kitchen/Dining/Living

3.4m x 7.6m (11'2" x 24'11")

Living

2.8m x 4.8m (9'2" x 15'9")

Bedroom 1

3.9m x 4.1m (12'10" x 13'5")

Bedroom 1

3.4m x 3.3m (11'2" x 10'10")

Bedroom 2

3.9m x 2.8m (12'10" x 9'2")

Bedroom 2

2.8m x 4.2m (9'2" x 13'9")

Bathroom

2.2m x 2.0m (7'3" x 6'7")

Bathroom

2.2m x 2.0m (7'3" x 6'7")

TYPICAL 2 BEDROOM 2 BATHROOM APARTMENT





