



Khormaksar Drive, Nocton



£650 PCM

- Village Location between Lincoln & Sleaford
- Allocated Off Road Parking
- Well Managed Block
- Two Double Bedrooms
- First Floor Apartment
- Available Now!
- Deposit: £750.00
- EPC rating D



****Virtual Viewing Available** TWO DOUBLE BEDROOM First Floor Apartment** situated in a village location to the Southeast of Lincoln city offering good access to both Lincoln and Sleaford & AVAILABLE NOW. The recently redecorated accommodation comprises Entrance Hall with secure telephone intercom system, good sized Living Room and Dining Kitchen both rooms offering access to the Balcony, Two Double Bedrooms both with built in wardrobes and Bathroom. One Allocated Off Road Parking Space, Communal Gardens. EPC Grade D and Council Tax Band A.

Entrance Hall

With access to storage.

Lounge

14'6" x 10'5" (4.4m x 3.2m)

With a window the side aspect and radiator.

Kitchen/Diner

13'4" x 10'4" (4.1m x 3.1m)

With two windows to the side aspect, a range of wall and base units with worktops over, fitted oven with hob over, sink with drainer unit and access to the balcony.



Balcony

With field views and access from the kitchen/diner and the lounge.

Bedroom One

10'6" x 10'2" (3.2m x 3.1m)

With a window to the side aspect, fitted wardrobe and radiator.

Bedroom Two

14'4" x 10'6" (4.4m x 3.2m)

With a window to the side aspect, fitted wardrobe and radiator.

Bathroom

6'9" x 6'2" (2.1m x 1.9m)

With a window to the side aspect, low level WC, hand wash basin and panelled bath.

Outside

One allocated off road parking space. Lawned communal gardens.

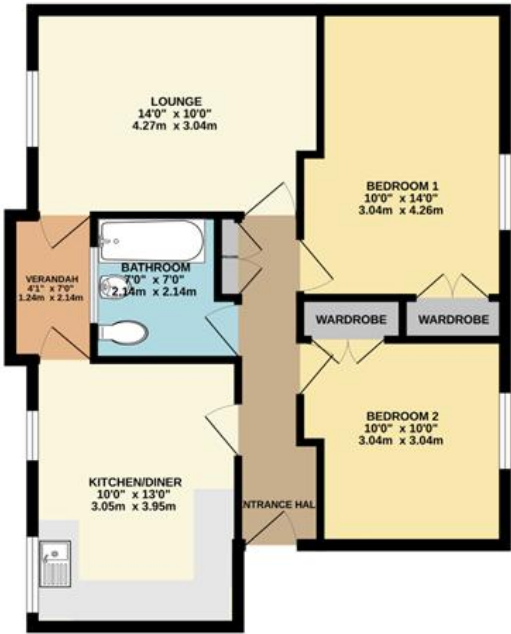
Agents Note

These particulars are issued in good faith but do not constitute representations of fact or form part of any offer or contract. The matters referred to in these particulars should be independently verified by prospective buyers or tenants. Neither Newton Fallowell nor any of its employees or agents has any authority to make or give any representation or warranty whatever in relation to this property.

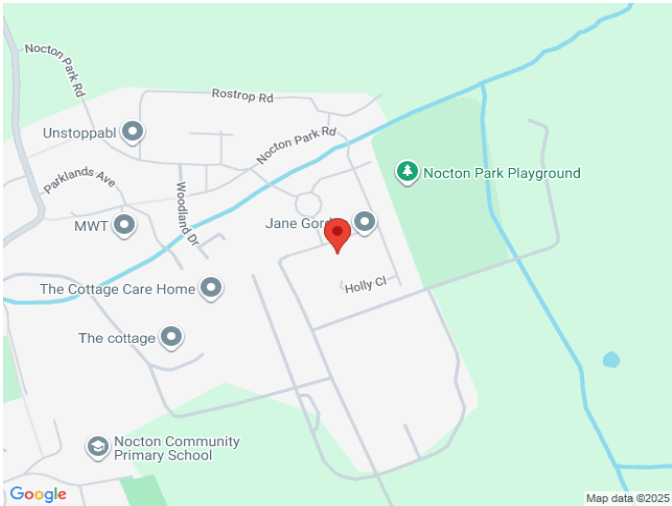


Floorplan

GROUND FLOOR
645 sq.ft. (59.9 sq.m.) approx.



KHORMAKSAR DRIVE, NOCTON LN4 2DD
TOTAL FLOOR AREA : 645 sq.ft. (59.9 sq.m.) approx.
While every attempt has been made to ensure the accuracy of the floorplan contained here, measurements of doors, windows, rooms and any other items are approximate and no responsibility is taken for any error, omission or misstatement. This plan is for illustrative purposes only and should be used as such by any prospective purchaser. The services, systems and appliances shown have not been tested and no guarantee as to their operability or efficiency can be given.
Made with floorplan (2023)



Score	Energy rating	Current	Potential
92+	A		
81-91	B		
69-80	C		80 C
55-68	D	68 D	
39-54	E		
21-38	F		
1-20	G		



Newton Fallowell Lincoln

01522 516590
lincoln@newtonfallowell.co.uk