

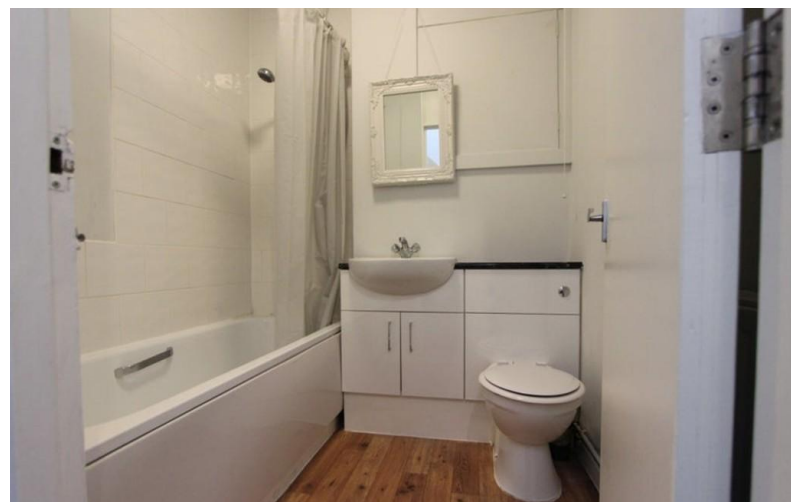
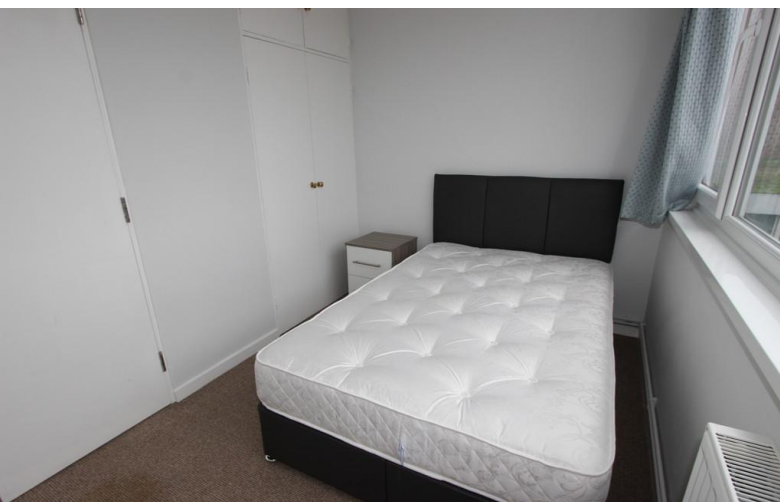


Woodcote House Hitchin

£675 pcm



- Spacious Room With Furniture
- Hitchin Town Centre
- Suitable For Student/Professional
- All Bills Included
- Single Occupancy
- Communal Area Cleaning Included
- Available End Of May
- EPC - D





A spacious room in a shared apartment, located in Hitchin's town centre - just a 10 minute walk from the train station. The room comes furnished, including a bed/mattress, wardrobe, bedside table and additional storage. The apartment has a modern shared bathroom and kitchen, with a balcony overlooking St Mary's Church. All bills are included in the rent - gas, electric, water, high speed internet and regular communal area cleaning. Available 22 May 2024.

Viewings: strictly by appointment with dj Lettings, Hitchin office



30 Sun Street, Hitchin
Hertfordshire. SG5 1AH

t: 01462 455434
info@djlettings.co.uk
www.djlettings.co.uk



Free Property Appraisal • Full Management Service • Tenant Find Service • Tenant Reference Checks
Rent & Legal Protection • Safety Regulation Advice • Tenancy Deposit Registration
Client Money Protection • Buy to Let Advice • Estate Management Services