



4 Bed House Share to rent, New Ashby Road, Loughborough, LE11 4ET

£86/pppw (£373/pppcm) based on 4 people sharing + £800 deposit [EPC: D]



Front of House

New Ashby Road, Loughborough, LE11 4ET

* 50% DISCOUNT ON SUMMER RENT FOR JULY & AUGUST * Spacious student property fully furnished, including flat screen TV. Open plan kitchen with breakfast bar and all kitchen appliances, including tumble dryer. Four double bedrooms. Private garden to the rear with picnic bench & lockable bike shed. Off street parking. The property is just 50 metres from University campus entrance.

Kitchen 5.46m (17'11) x 4.03m (13'3)

Great kitchen complete with all the appliances you need are included and both a breakfast bar and dining area.

Four bedrooms

All the bedrooms in this house are good sized rooms fully furnished with beds, side tables, desks, chairs, wardrobes and chest of drawers. The rooms are decorated in a neutral style, all of which are double glazed and centrally heated.

Toilet

There is a separate upstairs toilet for your convenience.

Parking

Driveway parking for several cars to the front of the property with further space available on road without restriction.

Glazing

Modern, good quality, uPVC double glazing.

Please note

We aim to make our particulars both accurate and reliable. However they are not guaranteed; nor do they form part of an offer or contract. If you require clarification on any points then please contact us, especially if you are traveling some distance to view. All measurements are to widest point.

Lounge 3.24m (10'8) x 2.66m (8'9)

Spacious lounge with flat screen TV, oversized sofa and armchairs. Opens to the kitchen making this a great social space.

Bathroom 2.5m (8'2) x 1.66m (5'5)

Situated on the first floor. A contemporary bathroom suite complete with electric shower over the bath.

Garden

Rear garden has lawn, patio area, picnic bench and lockable bike shed.

Heating

Gas fired central heating.



Kitchen



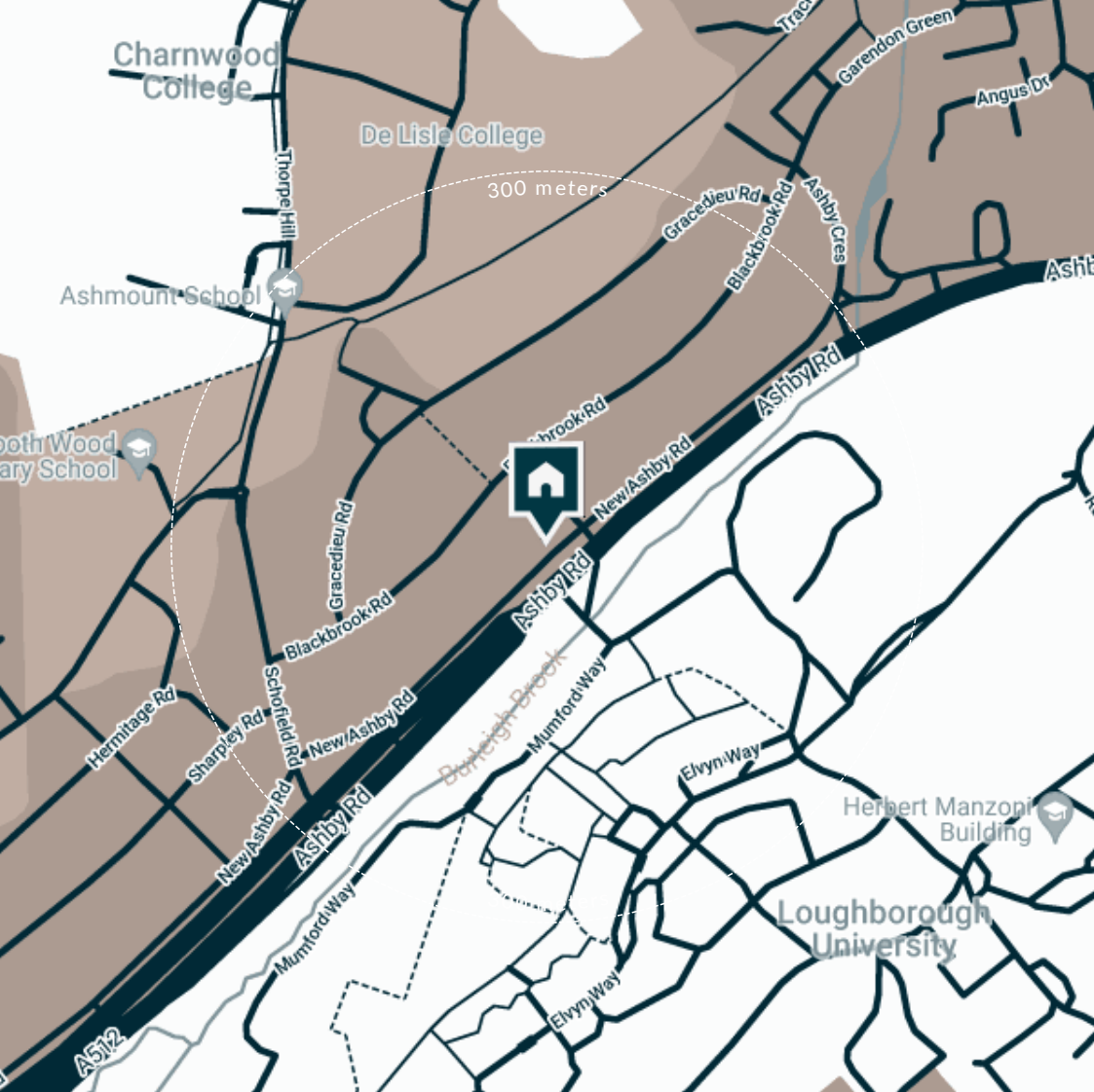
Kitchen



Kitchen



Kitchen / Dining Area



Supermarkets

Co-op Food Knightthorpe Rd	0.6 mi.
Morrisons Loughborough	0.8 mi.
Lidl Loughborough	1 mi.
Sainsburys Loughborough	1.1 mi.
Tesco Superstore Loughborough	1.2 mi.

Train Stations

Loughborough	1.8 mi.
Barrow upon Soar	4 mi.
Sileby	5.8 mi.
East Midlands Parkway	6.7 mi.
Syston	8.2 mi.

Primary School

Booth Wood Primary Sch	0.2 mi.
Thorpe Acre Junior Sch	0.3 mi.
Ashmount Sch	0.3 mi.
Loughborough CE Primary Sch	0.8 mi.
Holywell Primary Sch	0.8 mi.

Gyms

Loughborough Sport	0.4 mi.
Burleigh Springs Leisure Club	0.4 mi.
Loughborough University Pool	0.5 mi.
Radmoor Centre	0.6 mi.
Holywell Fitness Centre	0.7 mi.

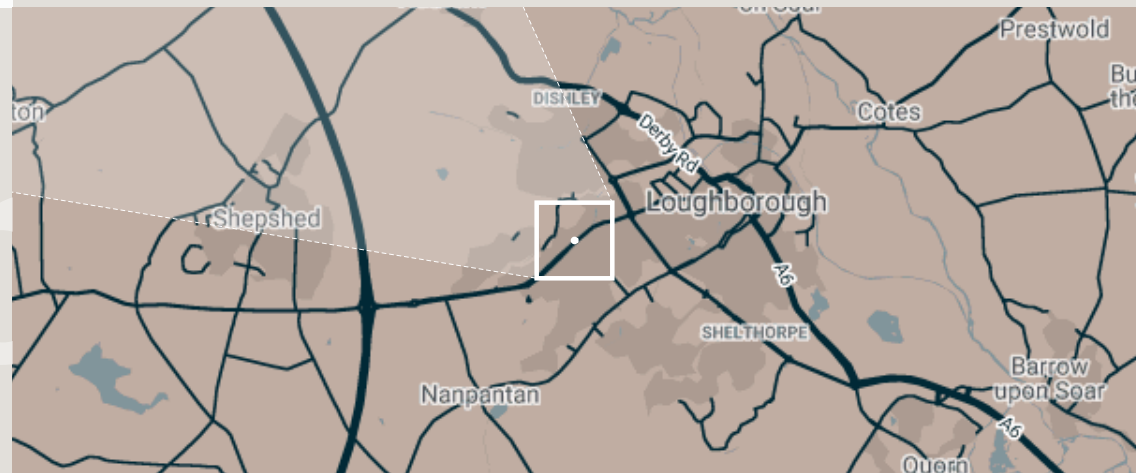
Nursery Schools

Loughborough Campus Nursery	0.3 mi.
Little House Day Nursery	0.4 mi.
Charnwood College Playgroup	0.4 mi.
Kingscliffe Day Nursery	0.8 mi.
Busy Bees in Loughborough	0.9 mi.

High School

De Lisle Catholic Science College	0.2 mi.
The Garendon High Sch	0.3 mi.
Ashmount Sch	0.3 mi.
Charnwood College	0.4 mi.
Lboro Uni School Of The Arts	0.6 mi.

**Discover
Loughborough**



Features

- ✓ Great location
- ✓ 100ft from the Uni
- ✓ Fully Furnished
- ✓ Great size
- ✓ Driveway Parking
- ✓ DASH accredited landlord
- ✓ Great Garden





Living Area



Living Area



Living Area



Living Area



Bedroom One



Bedroom One



Bedroom One



Bedroom One



Bedroom One



Bedroom Two



Bedroom Two



Bedroom Two



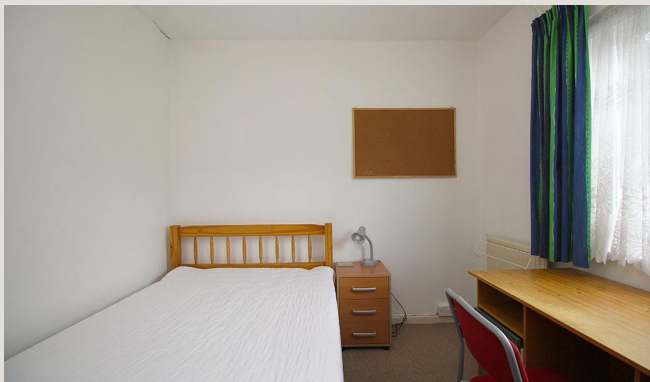
Bedroom Two



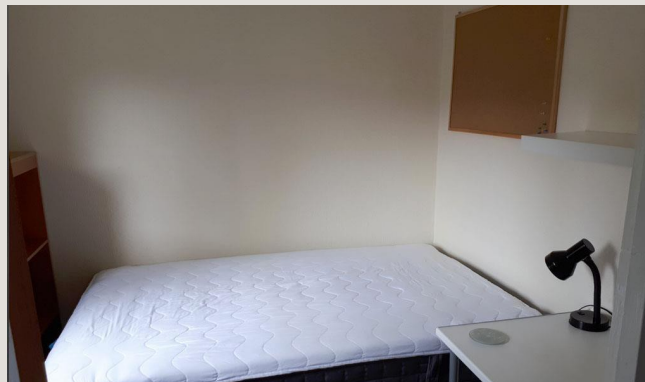
Bedroom Three



Bedroom Three



Bedroom Three



Bedroom Four



Bedroom Four



Bathroom



Bathroom



Bathroom



Water Closet



Landing



Entrance hall



Garden Area



Garden Area

Available
From 01/07/2021

Rent
£1490.67/pcm

Comes
Furnished

Deposit
£800

Bedrooms
4

EPC
D (56)

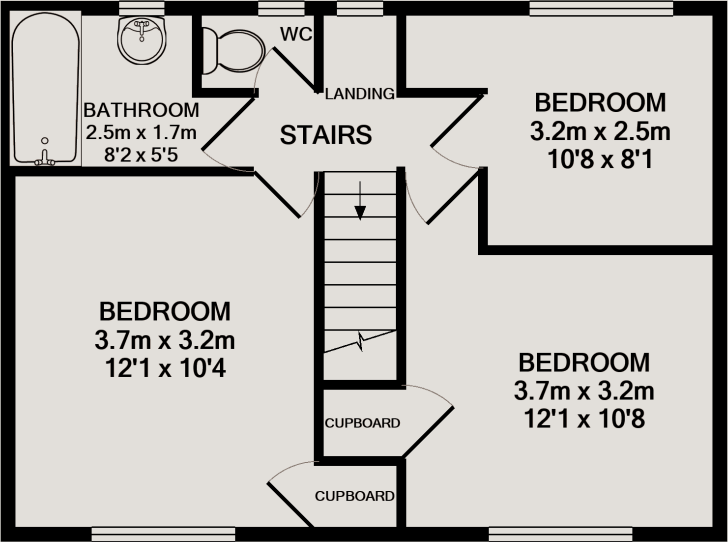
Receptions
1

ID
#3990

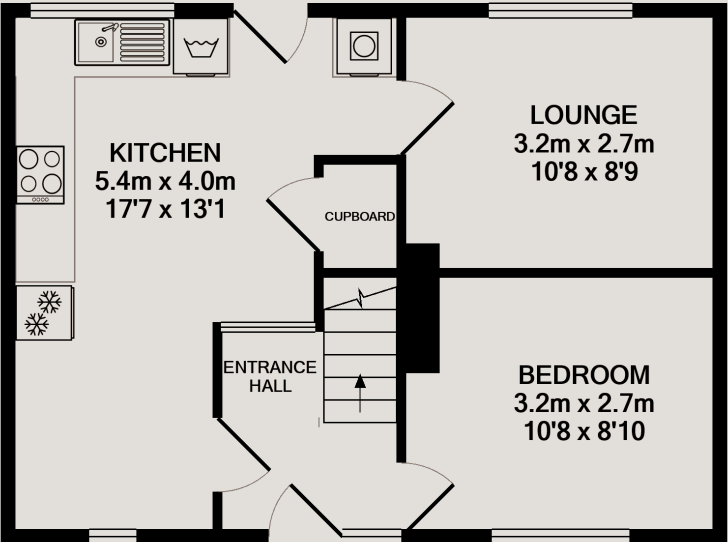
Bathrooms
1

Updated
25 May 2021

Parking
Driveway



1ST FLOOR



GROUND FLOOR



Have a property like this? Let's work together

Design and marketing are at the heart of our approach. With the great majority of people now looking for property online we can get our clients' properties in front of as many people as the largest national agents. Where we differ is in the quality of our work. We create stunning digital and printed particulars that highlight the individual attributes of every property we market. With videos tours and floor plans as standard.

Need a tenant? Ready to switch agent? Want to find out more? Call us between 9am and 6pm on 01509 320 320 or scan the link to find out more.



OUR OFFICE

7 Biggin Street
Loughborough, LE11 1UA

CONTACT US

01509 320 320
Let@Huntleys.net

