



**9 Bed House Share to rent, Carington Street, Loughborough, LE11 5NF**

£115/pppw (£498/pppcm) based on 9 people sharing + £1600 deposit [ EPC: C ]



Games room

## Carington Street, Loughborough, LE11 5NF

### 50% discount for September! ### NINE DOUBLE bedrooms. TWO separate lounges, TWO washrooms, a POOL TABLE, parking for several cars, OPEN PLAN kitchen with BREAKFAST BAR, all the kitchen APPLIANCES including AMERICAN style fridge-freezer and a DISHWASHER.

### **Kitchen** 4.9m (16'1) x 3.4m (11'2)

Stunning gloss white kitchen complete with American style fridge freezer and breakfast bar overlooking the lounge / TV area. All the kitchen appliances you need are included.

### **Second Lounge** 5m (16'5) x 3.4m (11'2)

Another room? This place is huge! Yes, that's right, a second lounge with patio doors overlooking the rear garden. Furnished with three oversized leather sofas.

### **Bedrooms x9**

All the bedrooms in this house are good sized double rooms fully furnished with double beds, side tables, desks, chairs, wardrobes and chests of draws. The rooms are decorated in a variety of colours, all of which are double glazed and centrally heated.

### **Shower room** 2.8m (9'2) x 1.8m (5'11)

Contemporary three piece shower suite with electric shower and heated towel rail.

### **Heating**

Gas fired central heating.

### **Glazing**

Full Upvc double glazing.

### **Please note**

We aim to make our particulars both accurate and reliable. However they are not guaranteed; nor do they form part of an offer or contract. If you require clarification on any points then please contact us, especially if you are traveling some distance to view. All measurements are to widest point.

### **Lounge** 4.9m (16'1) x 2.8m (9'2)

Spacious lounge with oversized sofas, flat screen TV. The open plan layout to the kitchen and Breakfast bar makes this a great social space.

### **Games room** 5.2m (17'1) x 4.3m (14'1)

Complete with its own pool table and plenty of room for the cues. Another sofa and armchair keep the spectators happy.

### **Bathroom** 3.2m (10'6) x 2.4m (7'10)

Contemporary four piece bathroom suite complete with bath, separate electric shower and heated towel rail.

### **Garden**

Private and low maintenance rear garden with patio, decking and lawn. Great for BBQs in the summer. Convenient side access makes this a great place to secure bikes.

### **Parking**

Driveway parking for approximately six cars to the front of the property with further space available on the surrounding roads without restriction.





Kitchen and Breakfast bar



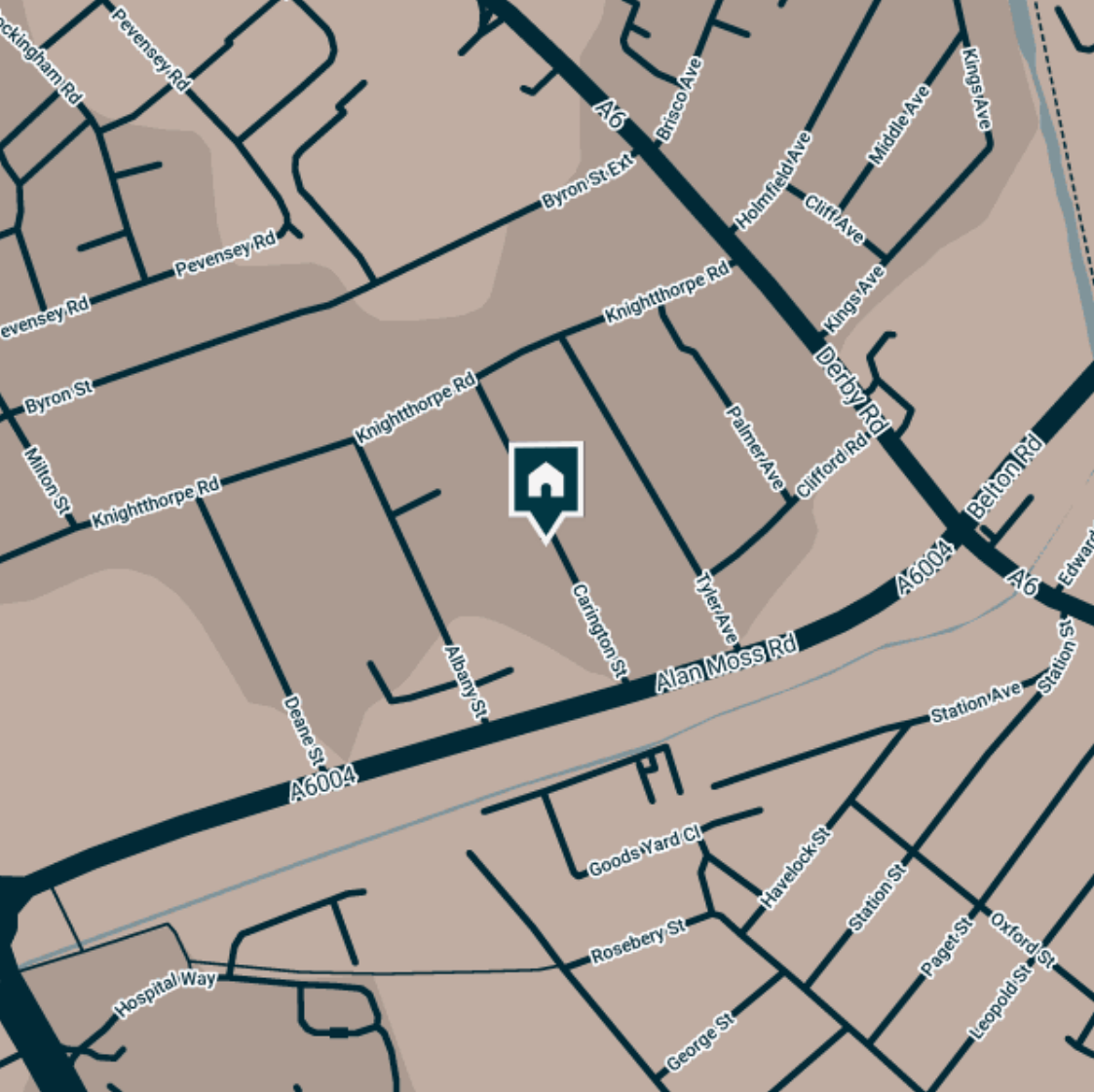
Lounge



Lounge and Kitchen



Second Lounge



### Supermarkets

Lidl Loughborough	0.2 mi.
Co-op Food Knightthorpe Rd	0.4 mi.
Sainsburys Loughborough	0.5 mi.
Aldi Loughborough	0.5 mi.
Tesco Superstore Loughborough	0.6 mi.

### Gyms

Loughborough University Pool	0.5 mi.
Anytime Fitness Loughborough	0.5 mi.
Radmoor Centre	0.6 mi.
Loughborough Sport	0.6 mi.
PureGym Loughborough	0.7 mi.

### Train Stations

Loughborough	1.1 mi.
Barrow upon Soar	3.8 mi.
Sileby	5.6 mi.
East Midlands Parkway	6.2 mi.
Long Eaton	7.9 mi.

### Nursery Schools

Little House Day Nursery	0.4 mi.
Busy Bees in Loughborough	0.4 mi.
Kingscliffe Day Nursery	0.4 mi.
Robert Bakewell Playgroup	0.5 mi.
Loughborough Campus Nursery	0.6 mi.

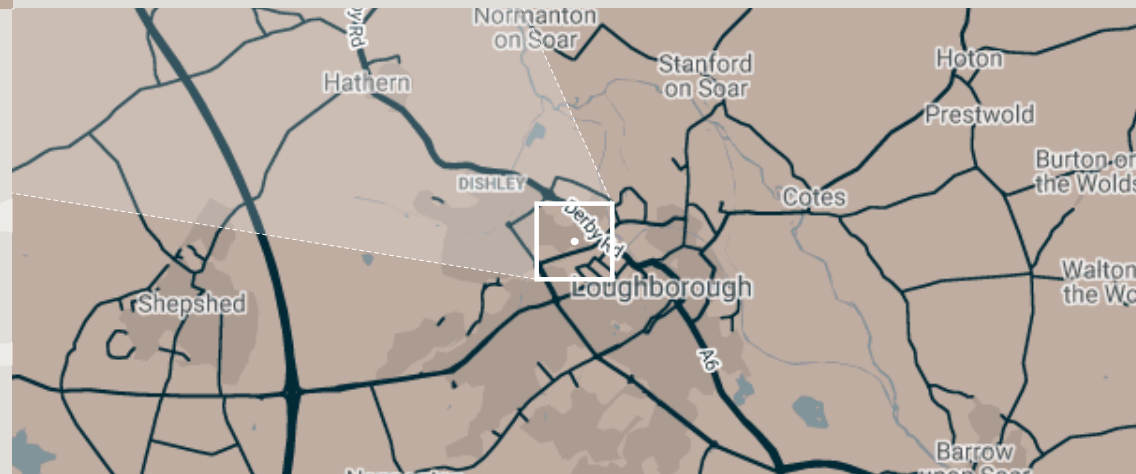
### Primary School

St Marys Catholic Primary Sch	0.4 mi.
Robert Bakewell Primary Sch	0.5 mi.
Loughborough CE Primary Sch	0.6 mi.
Limehurst Academy	0.6 mi.
Thorpe Acre Junior Sch	0.7 mi.

### High School

RNIB College Loughborough	0.6 mi.
Limehurst Academy	0.6 mi.
Loughborough College	0.6 mi.
Lboro Uni School Of The Arts	0.7 mi.
The Garendon High Sch	0.8 mi.

Discover  
Loughborough





## Features

- ✓ Nine Double Bedrooms
- ✓ Fully Furnished
- ✓ Plenty of Parking
- ✓ Pool Table!





Hall



Bathroom one



Bedroom



Bathroom Two



Landing



Bedroom



Bedroom



Bedroom



Bedroom





Bedroom



Bedroom



Bedroom



Bedroom





Pool table



Patio



Decking



Garden



**Available**  
Now

**Rent**  
£4485/pcm

**Comes**  
Furnished

**Deposit**  
£1600

**Bedrooms**  
9

**EPC**  
C (79)

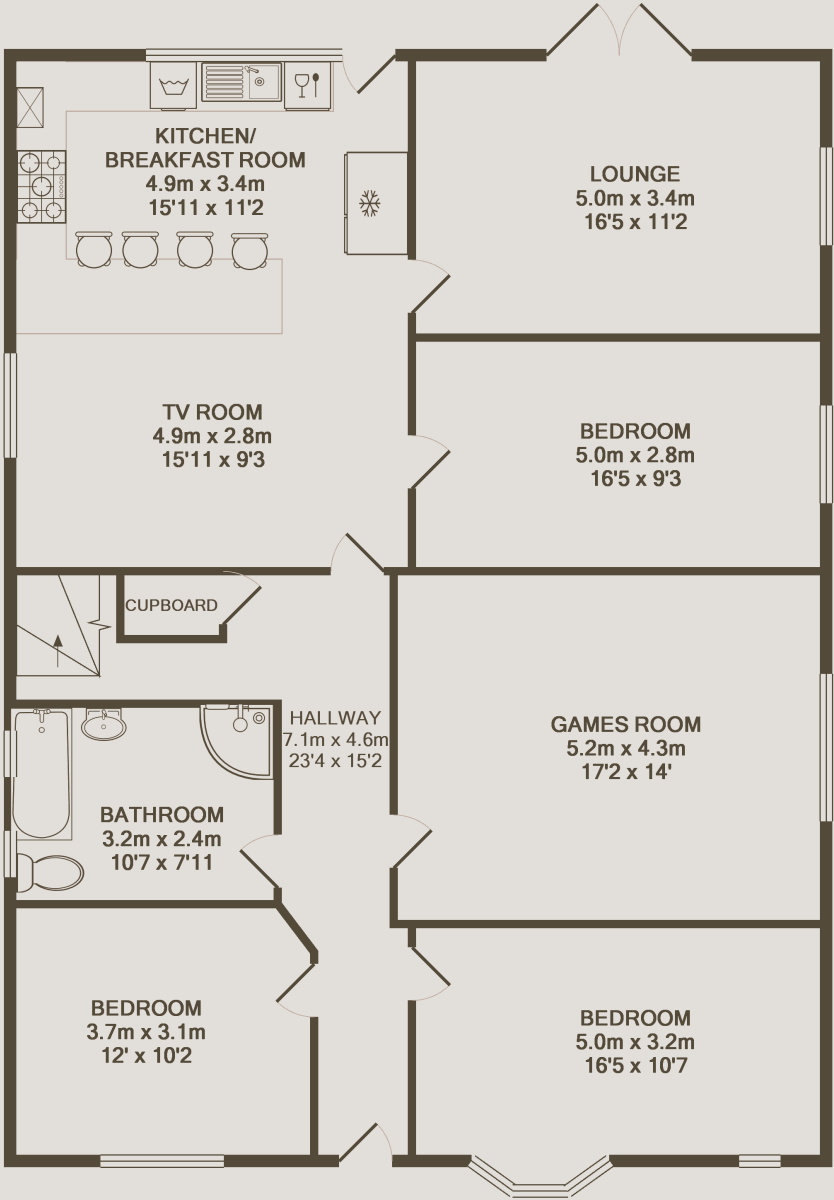
**Receptions**  
3

**ID**  
#474

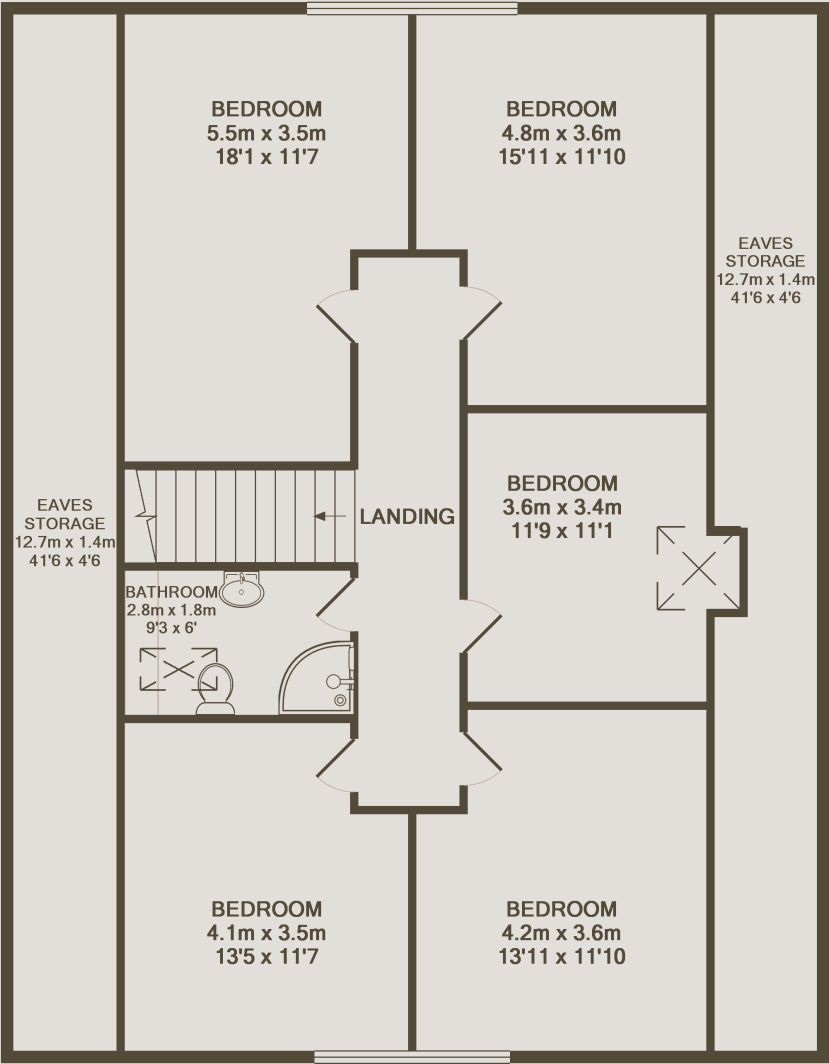
**Bathrooms**  
2

**Updated**  
8 September 2021

**Parking**  
Driveway



GROUND FLOOR



1ST FLOOR



## Have a property like this? Let's work together

Design and marketing are at the heart of our approach. With the great majority of people now looking for property online we can get our clients' properties in front of as many people as the largest national agents. Where we differ is in the quality of our work. We create stunning digital and printed particulars that highlight the individual attributes of every property we market. With videos tours and floor plans as standard.

**Need a tenant? Ready to switch agent? Want to find out more? Call us between 9am and 6pm on 01509 320 320 or scan the link to find out more.**



### OUR OFFICE

7 Biggin Street  
Loughborough, LE11 1UA

### CONTACT US

01509 320 320  
Let@Huntleys.net

