

A dark teal square logo with the word "Huntleys" in white, sans-serif font.

1 Bed 1st Floor Room to rent, Knightthorpe Road, Loughborough, LE11 4JS

£385/pcm (£89/pw) + £440 deposit [EPC: D]



Knighththorpe Road

Knighththorpe Road, Loughborough, LE11 4JS

SINGLE bedroom in a house share. STYLISH kitchen, low maintenance GARDEN. OPEN PLAN kitchen diner. Fully FURNISHED. STREET parking. All the kitchen APPLIANCES including a DISHWASHER. WIFI included.

Bedroom 3m (9'10) x 2.3m (7'7)

Situated on the first floor, this is a single bedroom fully furnished with bed, table, chair, fitted wardrobes and sofa. Marked as bedroom 4four on the floor plan.

Living Room 4.6m (15'1) x 3.7m (12'2)

Spacious lounge with flat screen TV, sofas, tables and chairs. The semi-open plan layout to the kitchen and dining area makes this a great social space.

Kitchen 5.5m (18'1) x 3.2m (10'6)

Stunning grey and black kitchen complete with dining table and stalls. Semi-open plan to the lounge and TV area. All the kitchen appliances you need are included. French doors to the garden.

Bathroom 2m (6'7) x 1.7m (5'7)

Contemporary three piece bathroom suite complete with shower over the bath and heated towel rail.

Please note

We aim to make our particulars both accurate and reliable. However, they are not guaranteed, nor do they form part of an offer or contract. Please get in touch with us if you require any clarification, especially if you are travelling some distance to view. All measurements are to the widest point.

Garden

Private and low maintenance rear garden with patio. Great for BBQs in the summer. Convenient side access makes this a great place to secure bikes.

Parking

Space available on road without restriction.

Heating

Gas fired central heating.

Glazing

Full uPVC double glazing.



Kitchen and Breakfast area



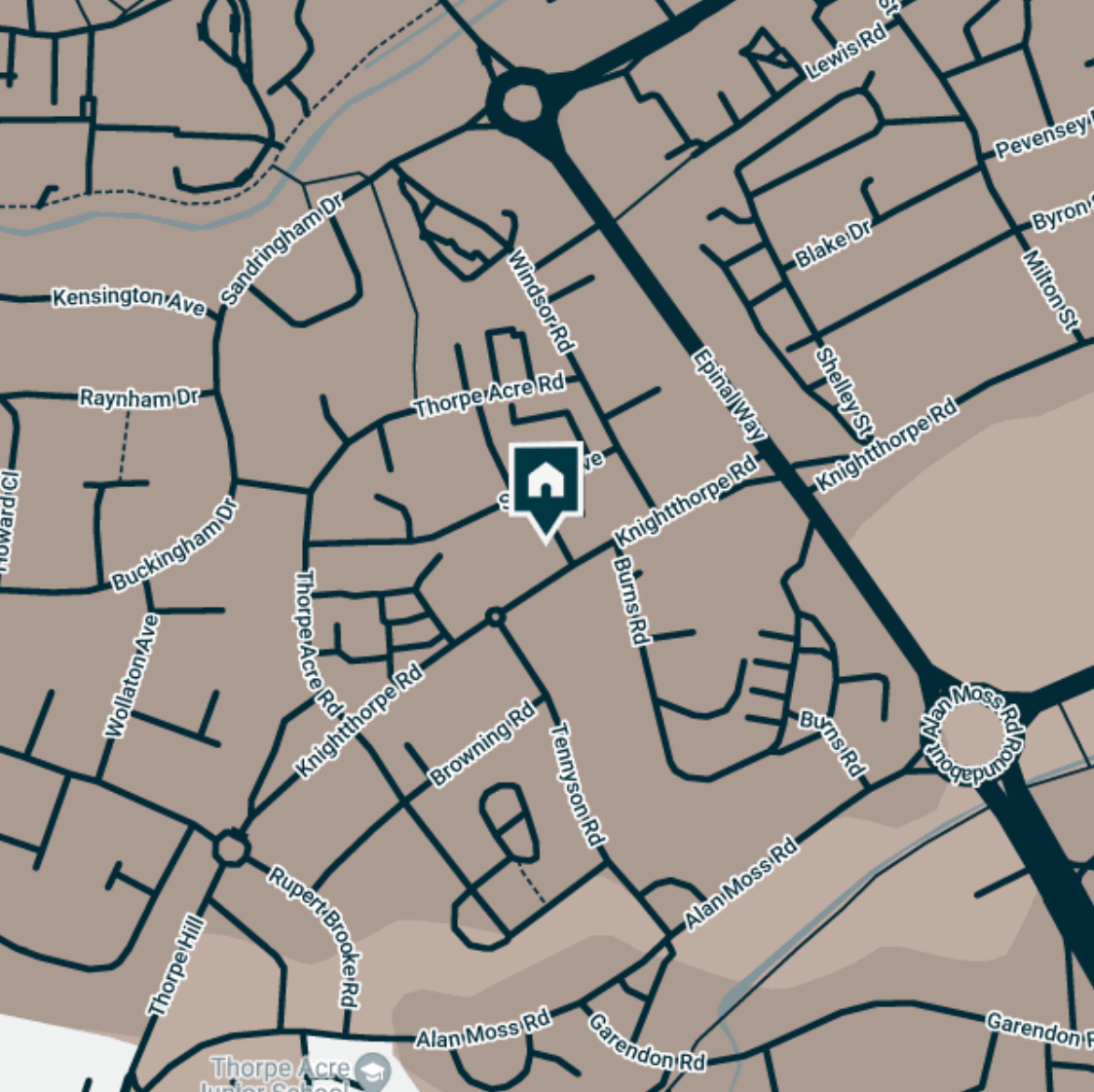
Livingroom



Livingroom



Entrance hall



Supermarkets

Co-op Food Knightthorpe Rd	0.1 mi.
Morrisons Loughborough	0.3 mi.
Lidl Loughborough	0.7 mi.
Aldi Loughborough	1 mi.
Sainsburys Loughborough	1 mi.

Train Stations

Loughborough	1.6 mi.
Barrow upon Soar	4.1 mi.
Sileby	6 mi.
East Midlands Parkway	6.1 mi.
Long Eaton	7.9 mi.

Primary School

Thorpe Acre Junior Sch	0.3 mi.
Robert Bakewell Primary Sch	0.4 mi.
Ashmount Sch	0.5 mi.
Booth Wood Primary Sch	0.6 mi.
Stonebow County Primary Sch	0.8 mi.

Gyms

Loughborough University Pool	0.5 mi.
Loughborough Sport	0.6 mi.
Radmoor Centre	0.8 mi.
Anytime Fitness Loughborough	1 mi.
Burleigh Springs Leisure Club	1 mi.

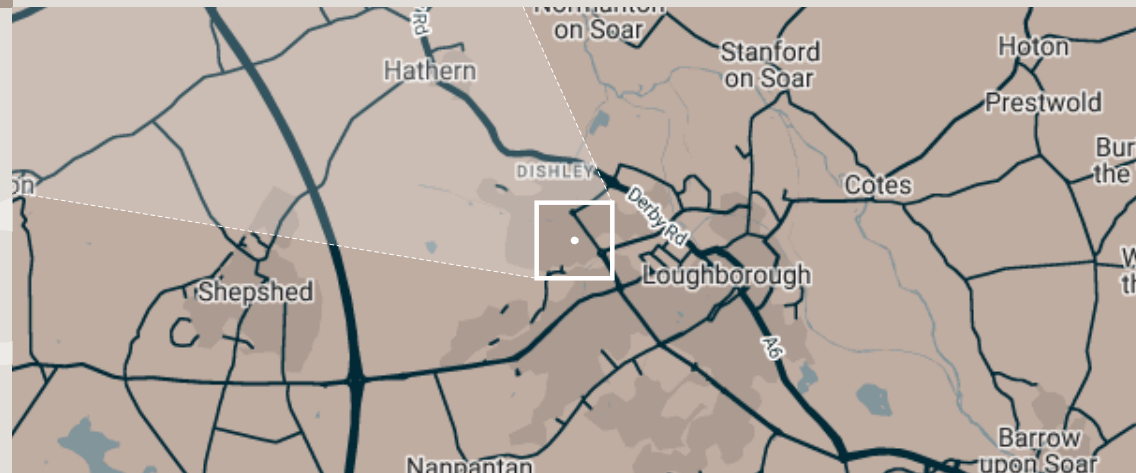
Nursery Schools

Little House Day Nursery	0.3 mi.
Robert Bakewell Playgroup	0.5 mi.
Loughborough Campus Nursery	0.5 mi.
Charnwood College Playgroup	0.5 mi.
Busy Bees in Loughborough	0.7 mi.

High School

The Garendon High Sch	0.4 mi.
De Lisle Catholic Science College	0.4 mi.
Ashmount Sch	0.5 mi.
Charnwood College	0.5 mi.
RNIB College Loughborough	0.8 mi.

Discover
Loughborough



Features

- ✓ Bills included
- ✓ Quiet location
- ✓ Low cost
- ✓ Fully Furnished
- ✓ Driveway parking
- ✓ Well presented





Landing



Bathroom



Bedroom

Available
Now

Rent
£385/pcm

Comes
Furnished

Deposit
£440

Bedrooms
1

EPC
D (61)

Receptions
1

Council tax
Band B

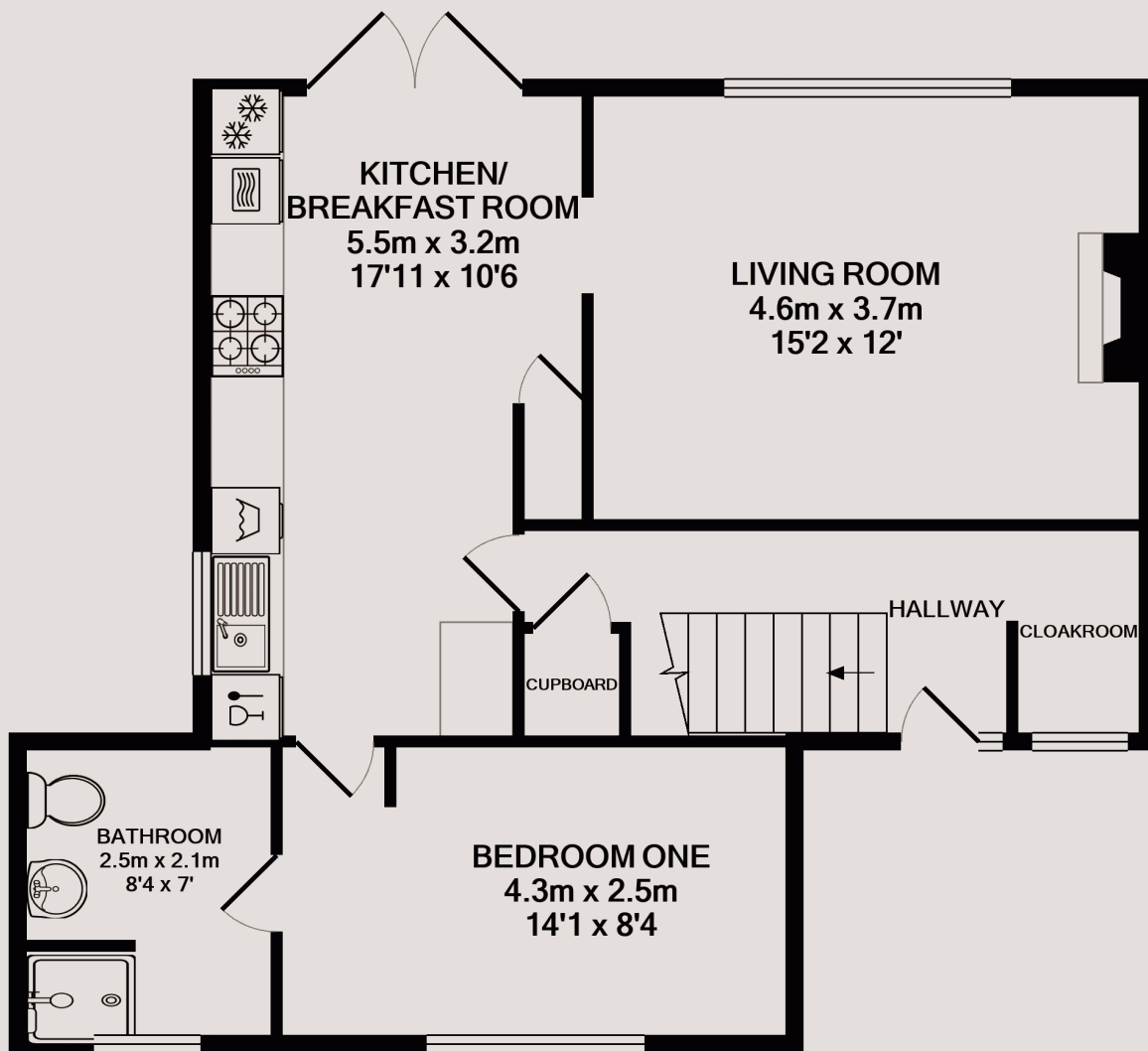
Bathrooms
1

ID
#547

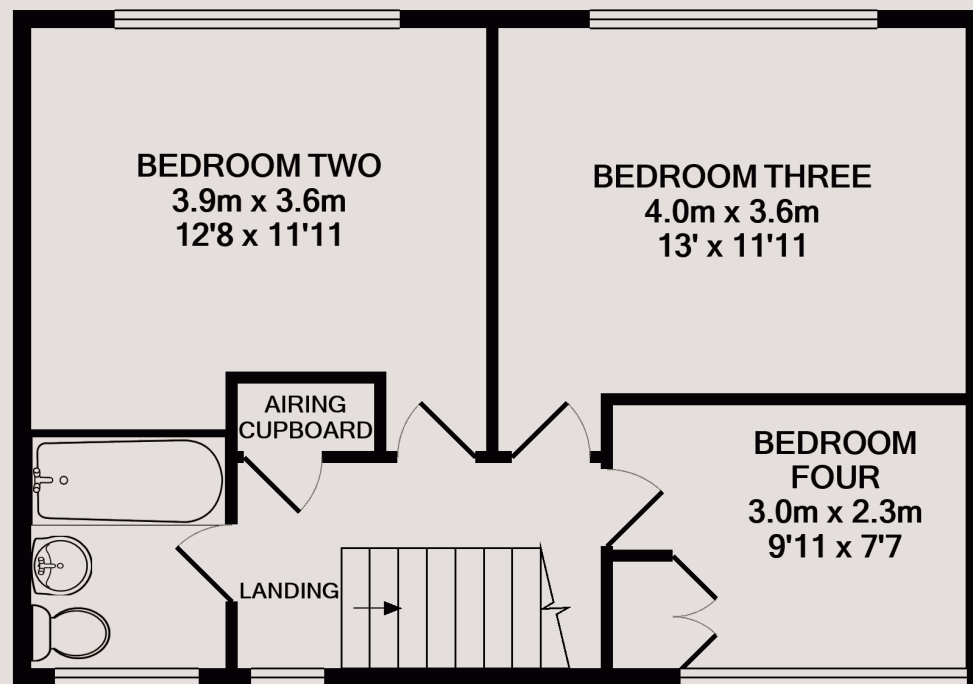
Parking
On Street

Updated
27 June 2022

Postcode
LE11 4JS



GROUND FLOOR



1ST FLOOR



Have a property like this? Let's work together

Design and marketing are at the heart of our approach. With most people now looking for property online, we can get our clients' properties in front of as many people as the most prominent national agents. Where we differ is in the quality of our work. We create stunning digital particulars that highlight the individual attributes of every property we market, with videos and floor plans as standard.

Need a tenant? Ready to switch agents? Want to find out more? Call us between 9 am and 6 pm on 01509 320 320 or scan the link to find out more.



OUR OFFICE

7 Biggin Street
Loughborough, LE11 1UA

CONTACT US

01509 320 320
Let@Huntleys.net

