



10 Jubilee Drive, The Meadows, Yelverton, Devon, PL20 7FG



Guide Price £625,000

'The Meadows', a new development in the quaint village of Crapstone, is nestled on the edge of Dartmoor National Park, an Area of Outstanding Natural Beauty. Offering modern, moorland living, amongst breath-taking landscapes and fabulous flora and fauna, these homes offer the best of both worlds in a peaceful rural location just minutes from the city of Plymouth.

10 Jubilee Drive is an executive, detached three bedroomed home which offers the perfect combination of contemporary design and spacious living accommodation. Built on one level for maximum accessibility, this fabulous bungalow comprises an open plan lounge/kitchen/dining room with a breakfast bar and bifold doors which open directly onto the garden. A master suite with ensuite shower room, two further bedrooms and a family bathroom make up the accommodation. The property is built on a large plot, sits within its own private gardens and benefits from having a private driveway with ample parking and a double garage. The property is built and ready to move into.

Service charges

The development is run by a management company with a service charge of £185.00 per year. The details of which should be confirmed by your solicitor.

Room Dimensions

lounge/kitchen/diner 4.23m x 13m, 13'11" x 42'8"

master bedroom 3.7m x 3.9m, 12'2" x 12'10"

ensuite 1.8m x 3.8m, 5'11" x 12'6" (max)

bedroom 2 3.7m x 3.2m, 12'2" x 10'6"

bedroom 3 3.7m x 2.4m, 12'2" x 7'10"

bathroom 2.2m x 2m, 7'3" x 6'7"

double garage (10 & 13) 6m x 5.4m, 19'8" x 17'9"

AGENTS NOTE

Please note: floorplans and dimensions are taken from architectural drawings and are for guidance only. Overall dimensions are usually stated and there may be projections into these. Please ask our Sales Team for specific details.

What 3 Words Location

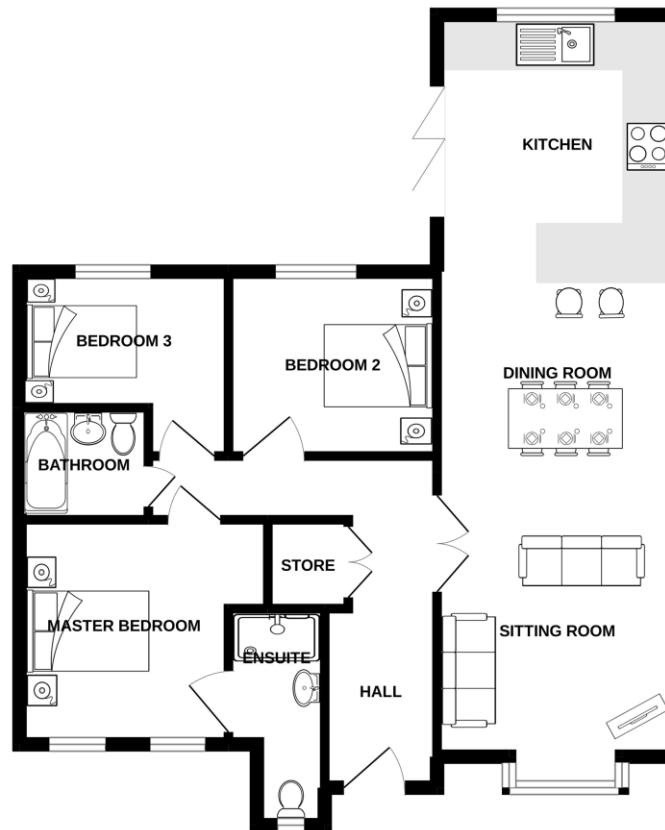
dunes.vague.irritate



To view this property call Lang Town & Country Estate Agents on **01752 278499**.



GROUND FLOOR



Whilst every attempt has been made to ensure the accuracy of the floorplan contained here, measurements of doors, windows, rooms and any other items are approximate and no responsibility is taken for any error, omission or mis-statement. This plan is for illustrative purposes only and should be used as such by any prospective purchaser. The services, systems and appliances shown have not been tested and no guarantee as to their operability or efficiency can be given.
Made with Metrix ©2022

Lang Town & Country
6 Mannamead Road
Mutley
Plymouth
PL4 7AA
Tel: 01752 278499
Email: newhomes@langtownandcountry.com

Lang Town & Country endeavour to ensure the accuracy of property details produced and displayed, we have not tested any apparatus, equipment, fixtures, fittings or services and so cannot verify that they are connected, in working order or fit for purpose. A buyer must check the availability of any property and make an appointment to view before embarking on any journey to see a property.

