



236 KENPAS HIGHWAY

FINHAM, CV3 6PB

- 3 Bedroom Semi Detached Property
- Huge Potential
- Chain Free Sale



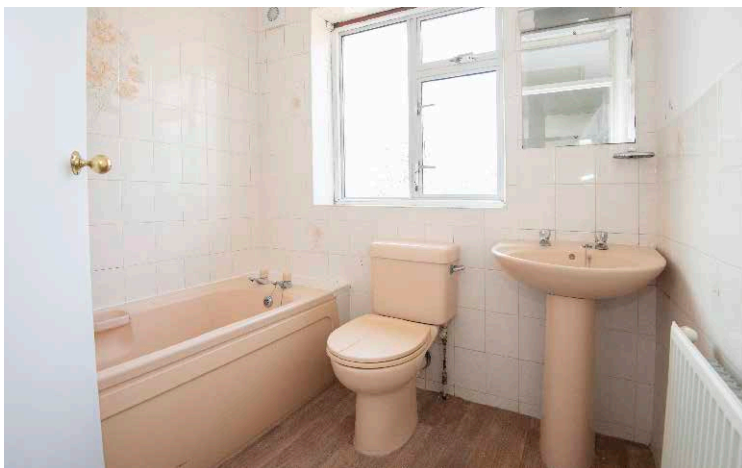
THE PROPERTY

A traditional double bayed semi detached property requiring modernisation whilst offering huge potential for anyone looking for a home to make their own and add value over time. The property is sold with the benefit of immediate vacant possession and a complete new roof. There is gas fired central heating by way of a modern 'Combi' boiler and uPVC double glazing.

The accommodation briefly offers, Entrance Hall, Lounge with bay window, Dining Room with sliding patio door which leads out to the rear garden, fitted Kitchen which would benefit from modernisation and a built in storage cupboard housing the properties gas 'Combi' boiler. To the first floor there are three bedrooms and a family Bathroom.

Externally there is direct vehicular access to a driveway and Garage located in the rear garden. There are gardens to front and rear which are both mainly laid to lawn. The rear garden is of a particularly good size and enjoys a private aspect to the far end. There are two brick sheds as well as the previously mentioned the Brick Garage.





THE LOCATION

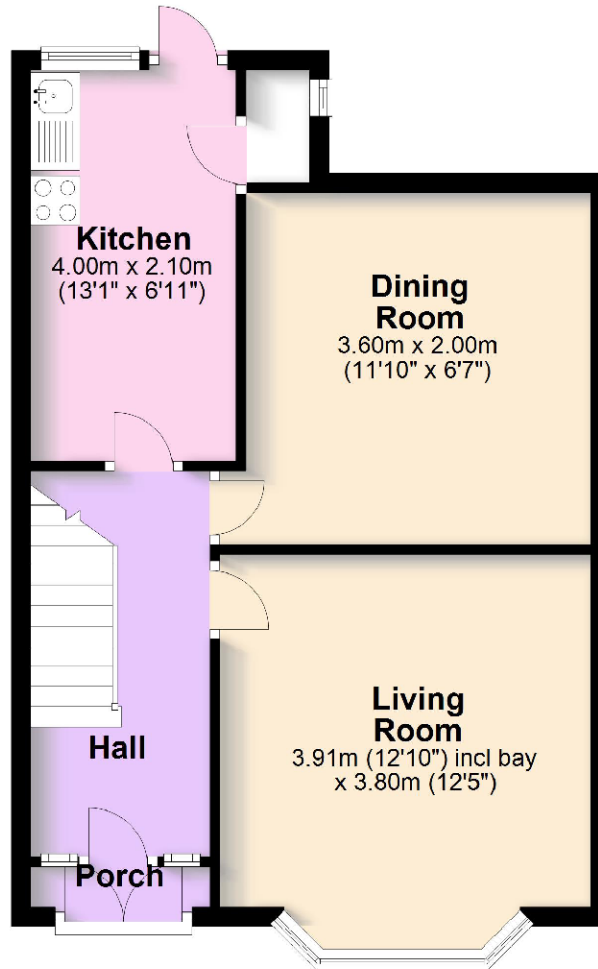
Kenpas Highway is only a short walk from the highly rated Finham Park school and is also located close to Stivichall Infant and Primary school as well as Bishop Ullathorne RC school.

There is nearby access to the A45 leading onto the areas network of commuter roads. There are a number of other local amenities including shops, pubs/eateries, a convenience store, Finham & Hearsall Golf Clubs and the War Memorial Park. The University of Warwick and Jaguar Landover in Whitley are also a short commute away by car or public transport.

Finham is situated on the aspirational south side of Coventry and commands a healthy property market where prices have risen in recent years, providing good investment prospects for potential buyers.

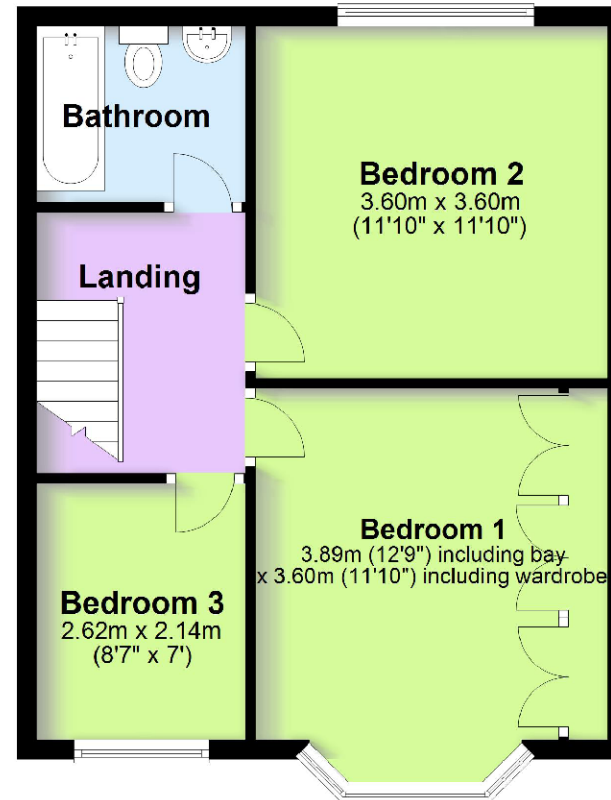
Ground Floor

Approx. 45.8 sq. metres (492.6 sq. feet)



First Floor

Approx. 42.9 sq. metres (461.6 sq. feet)



Total area: approx. 88.6 sq. metres (954.2 sq. feet)

