



## 8 BEAMISH CLOSE

COVENTRY, CV2 2BW

- Three Bedroom Property!
- Close To UHCW Hospital
- Unfurnished But Including FridgeFreezer/WashingMachine/Cooker
- Rear Driveway!
- No pets Or Smokers
- Garage included!
- Great Location
- EPC D
- Council Tax Band A





**E** ELIZABETH  
DAVENPORT

## THE PROPERTY

### PROPERTY

Available Now!!

We are pleased to present this lovely Unfurnished 3 bedroom home for rent.

To the front of the property there is a small easily maintainable lawn

The property comes with full gas central heating it is newly decorated and newly carpeted through out.

The house comes on an unfurnished basis but does include a fridge freezer, washing machine and cooker.

On the ground floor there is a large entrance hall with the stairs leading to the first floor, a good size lounge and the kitchen there is also a storage/meter cupboard.

To the first floor you will find 2 double bedrooms and a good size single and the family bathroom.

At the rear is a a gated small lawn a garage and a driveway for one car it also has an electric car charging point.

You will need to apply for residents parking permits from Coventry City Council

No Pets

Council Tax Band A

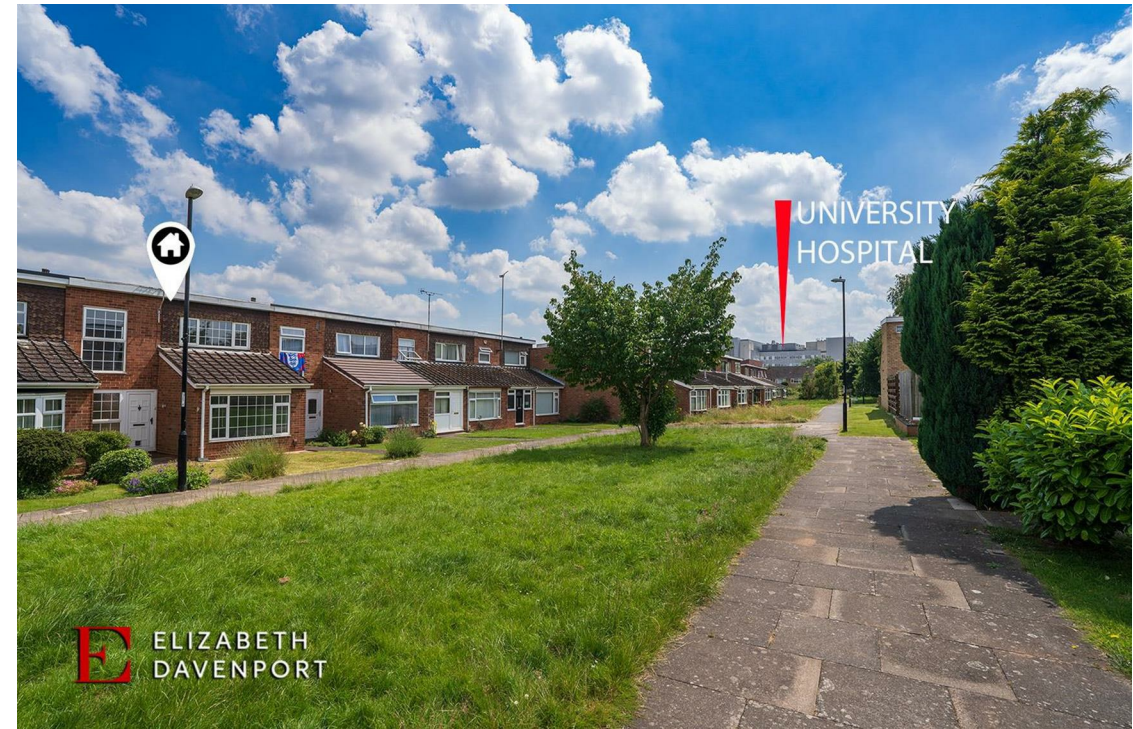
EPCD

Deposit 5 Wks Rent

### LOCATION



**E** ELIZABETH  
DAVENPORT



**E** ELIZABETH  
DAVENPORT





## THE LOCATION

### LOCATION

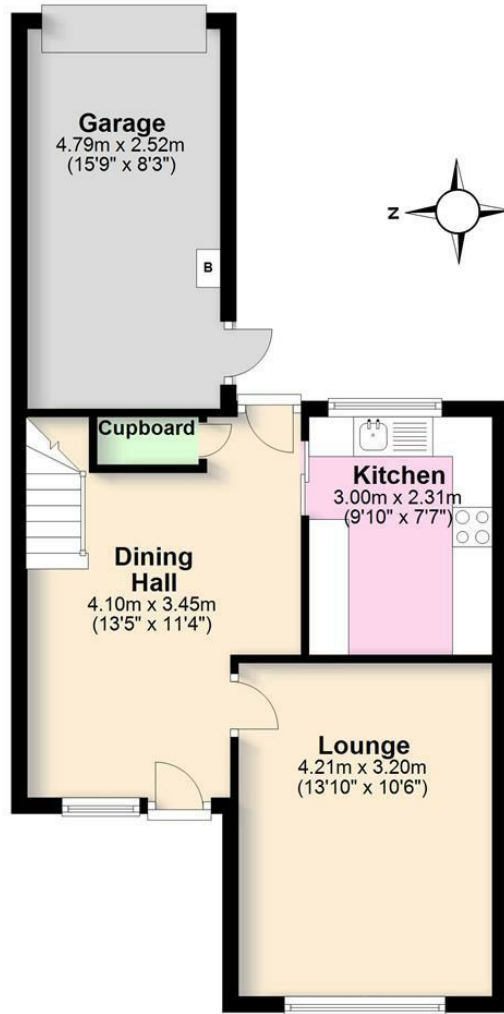
Beamish Close is found just under 1 Mile away from the University Hospital and is a comfortable walk or short bike ride to the hospital

For commuters, Junction 2 of the M6 motorway and links to the M69 are both around 1 mile away. There are also numerous local Supermarkets and Shopping facilities some great local pubs serving meals all just a 5 minute drive away. Further local Amenities include the Showcase Cinema and Mega bowl Bowling Alley, Both within walking distance. Good local schools include Caludon Castke and Ravensdale Primary. (Times and distances sourced from google and may vary)

THE FLOORPLAN

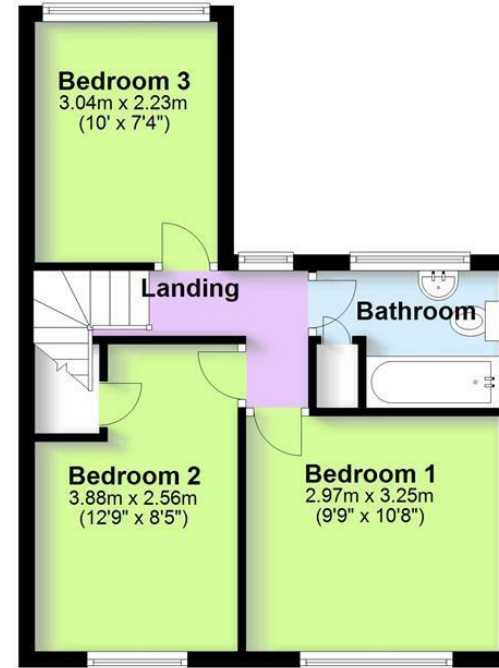
**Ground Floor**

Approx. 48.5 sq. metres (522.1 sq. feet)



**First Floor**

Approx. 35.5 sq. metres (381.7 sq. feet)



Total area: approx. 84.0 sq. metres (903.8 sq. feet)



01926 298 298  
kenilworth@elizabethdavenport.co.uk

Elizabeth Davenport Estate Agents  
99 Warwick Road, Kenilworth, Warwickshire, CV8 1HP

