

25 BROADWELL WOODS

BURTON GREEN, CV8 1QF

- 2 Bedroom Park Home
- Gated Community
- Delightfully Presented Throughout



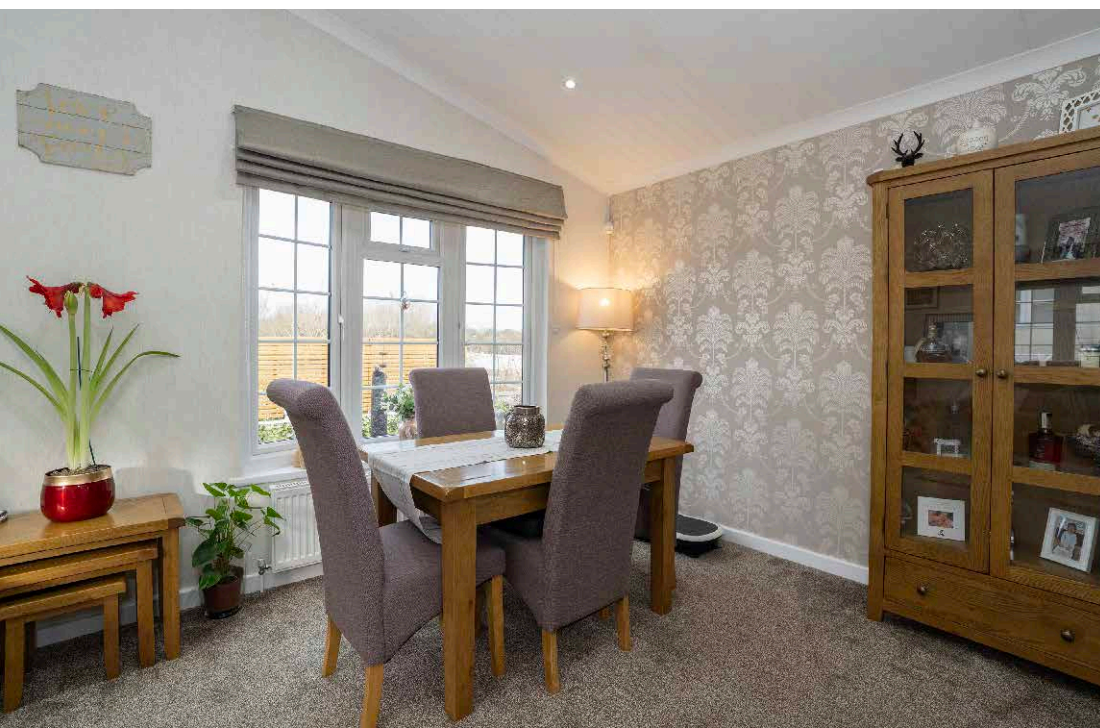
THE PROPERTY

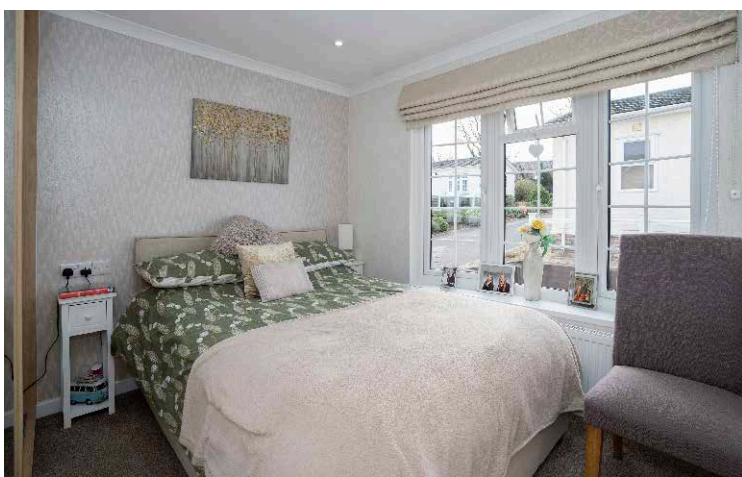
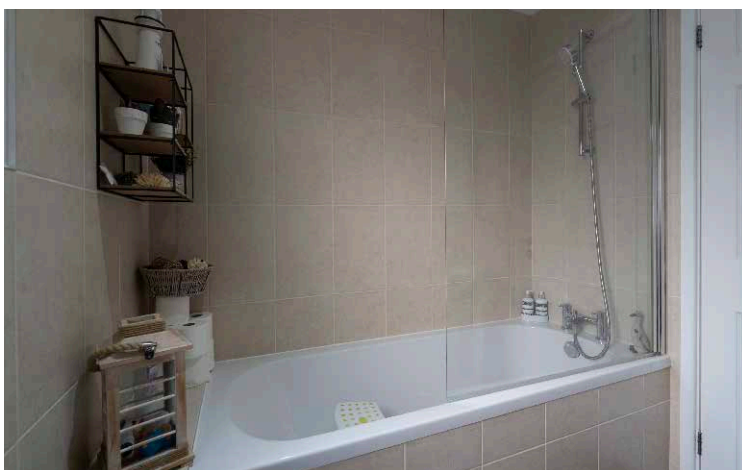
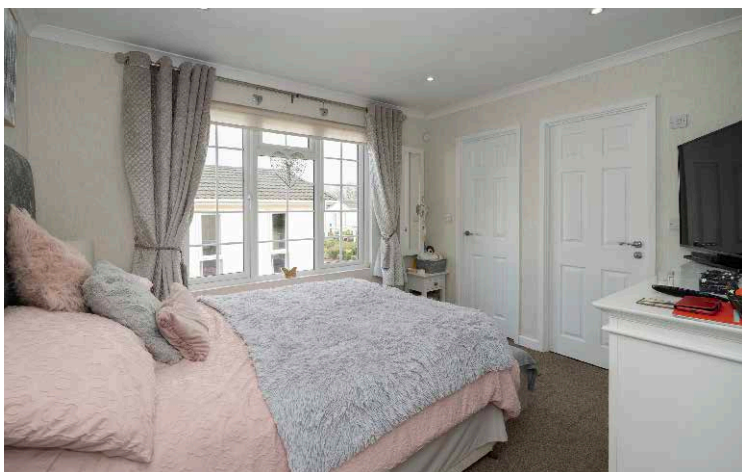
We are delighted to present to the market this very well presented and maintained park home in Burton Green. The property is in perfect condition for a buyer to move straight into, and would suit someone who wants living on one level. The property has a lovely secure and low maintenance garden with outside taps and 2 electric plug-ins. You also have two parking spaces, and visitor parking. The property has been insulated with a 24 year warranty, the fully fitted modern kitchen as integrated appliances to include, fridge/freezer, dishwasher, washing machine, tumble dryer and second freezer.

In brief the accommodation comprises, entrance hall with built in storage cupboards, good sized living room with feature fireplace, french doors leading onto a patio area, fully fitted modern kitchen with plenty of wall and base units, built in oven and hob. utility room with more storage, and door leading outside. Entrance hallway leading to family bathroom, study, bedroom two with built-in wardrobes, main bedroom with a walk-in wardrobe and en suite shower room.

To the outside you have two parking spaces, storage units, and a secure garden laid to lawn with steps leading onto a patio area ideal for entertaining.

Broadwell Woods is a private gated development for buyers over 50 years old. Set within a rural location between Kenilworth and Coventry.





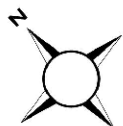
THE LOCATION

Situated within a private gated development between Kenilworth and Burton Green, Broadwell Woods is positioned about 2 miles from Kenilworth and some 6 miles from central Coventry.

Park Homes provide an alternative lifestyle to city living offering affordable detached accommodation within ideally managed and meticulously sourced locations. Each Home has a service charge that varies per site for communal facilities including lighting, security gates and communal gardening. Service Charges are set currently at £211 per calendar month as of April 2023.

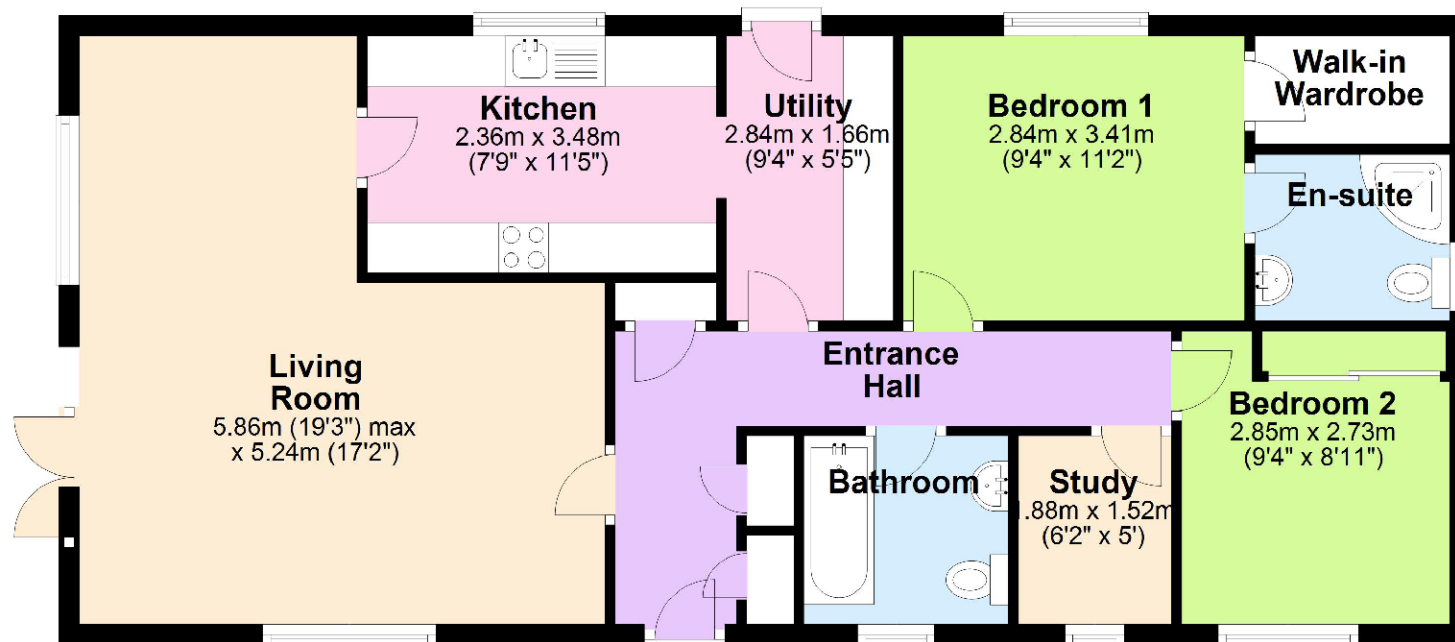
Broadwell Woods is a Pet friendly site.

THE FLOORPLAN



Ground Floor

Approx. 80.1 sq. metres (861.7 sq. feet)



Total area: approx. 80.1 sq. metres (861.7 sq. feet)



01926 298298
elizabethdavenport.co.uk

Elizabeth Davenport Estate Agents
99 Warwick Road, CV8 1HP

