



5 LONG ROW

ASHOW, CV8 2LE

- 3 Bedroom Pristine Period Cottage
- Prime Village Location
- Fabulous Rear Kitchen/Diner



THE PROPERTY

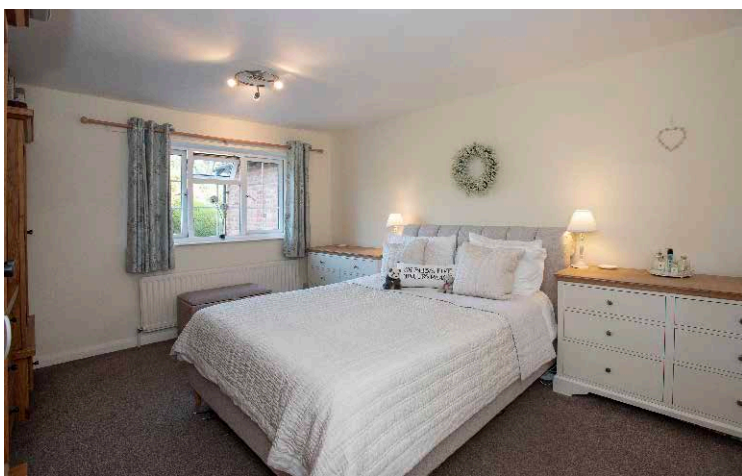
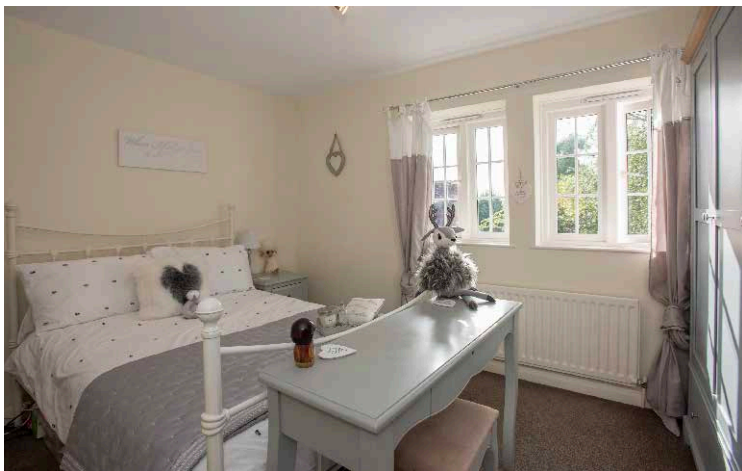
A pristine period cottage and which is immaculately presented throughout, located in the pretty village of Ashow, which is close to both Leamington and Kenilworth. The property has two reception rooms, and the most fabulous kitchen/diner with granite worktops and bi-fold doors overlooking the garden, cloakroom with w.c, and three double bedrooms, a modern fitted shower room. To the rear of this property you have a private rear garden, with a double garage with power and electric door, and further parking.

In brief the accommodation comprises, entrance hallway, cloakroom with w.c, family room with sliding doors, lounge, fully fitted modern kitchen with built in appliances to include a double oven, microwave, dishwasher, washer/dryer, induction hob and cooker hood, the kitchen is solid wood with granite worktops and underfloor heating, with bi-fold doors opening onto a private patio area, and the garden. To the first floor accommodation you have a modern fitted shower room, three double bedrooms

To the rear of this lovely house you have a good sized patio area perfect for entertaining, steps leading onto a lawned area and borders with various plants, shrubs and trees. pathway taking you to a double garage with electric door, and loft space.

We would strongly recommend a viewing of this lovely home to appreciate the property and the village community of Ashow





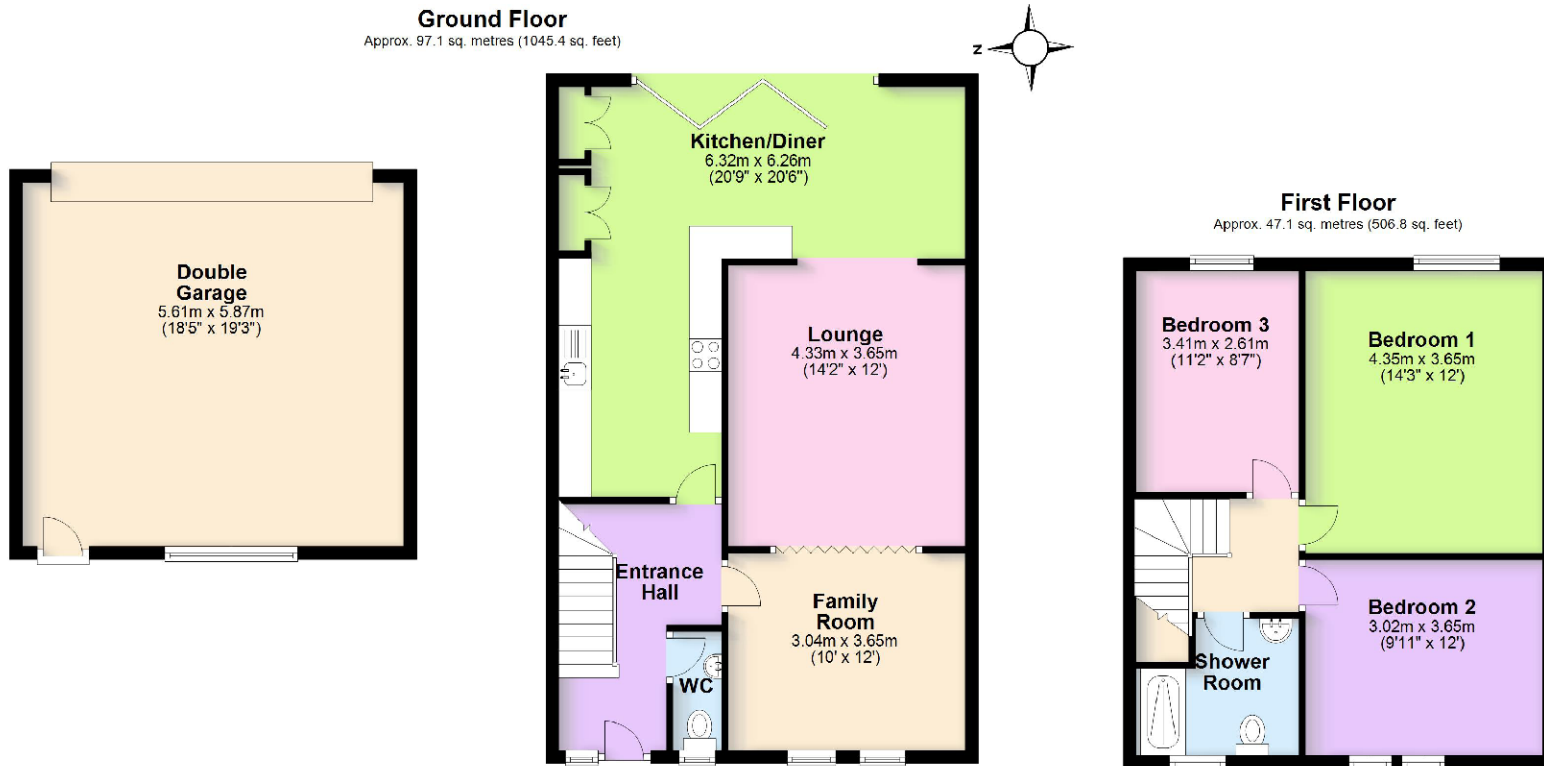
THE LOCATION

Ashow is a small village located approximately 2.5 miles south east of central Kenilworth. According to the last census (2011) the parish had a population of 108. The village has around 51 houses and a small church, The Assumption of Our Lady, which dates from the early 12th century. There is also a small village club with a bar that is right in the heart of the village.

There are many walks that take you through the village and into Kenilworth or in the opposite direction towards Leamington and its surrounding villages, ideal for dog owners and anyone who enjoys an active outdoor lifestyle.

The village is accessible by the B4115 Coventry Road and the southernmost tip of the parish lies on the River Avon. The earliest known documented reference to Ashow is in the Domesday Survey of 1086.

THE FLOORPLAN



01926 298298
elizabethdavenport.co.uk

Elizabeth Davenport Estate Agents
99 Warwick Road, CV8 1HP

