

JAMES EDWARD

Comprehensively Cared For



Palmerston Road

, London, N22 8QZ

£1,700 Per Month



Palmerston Road



Description

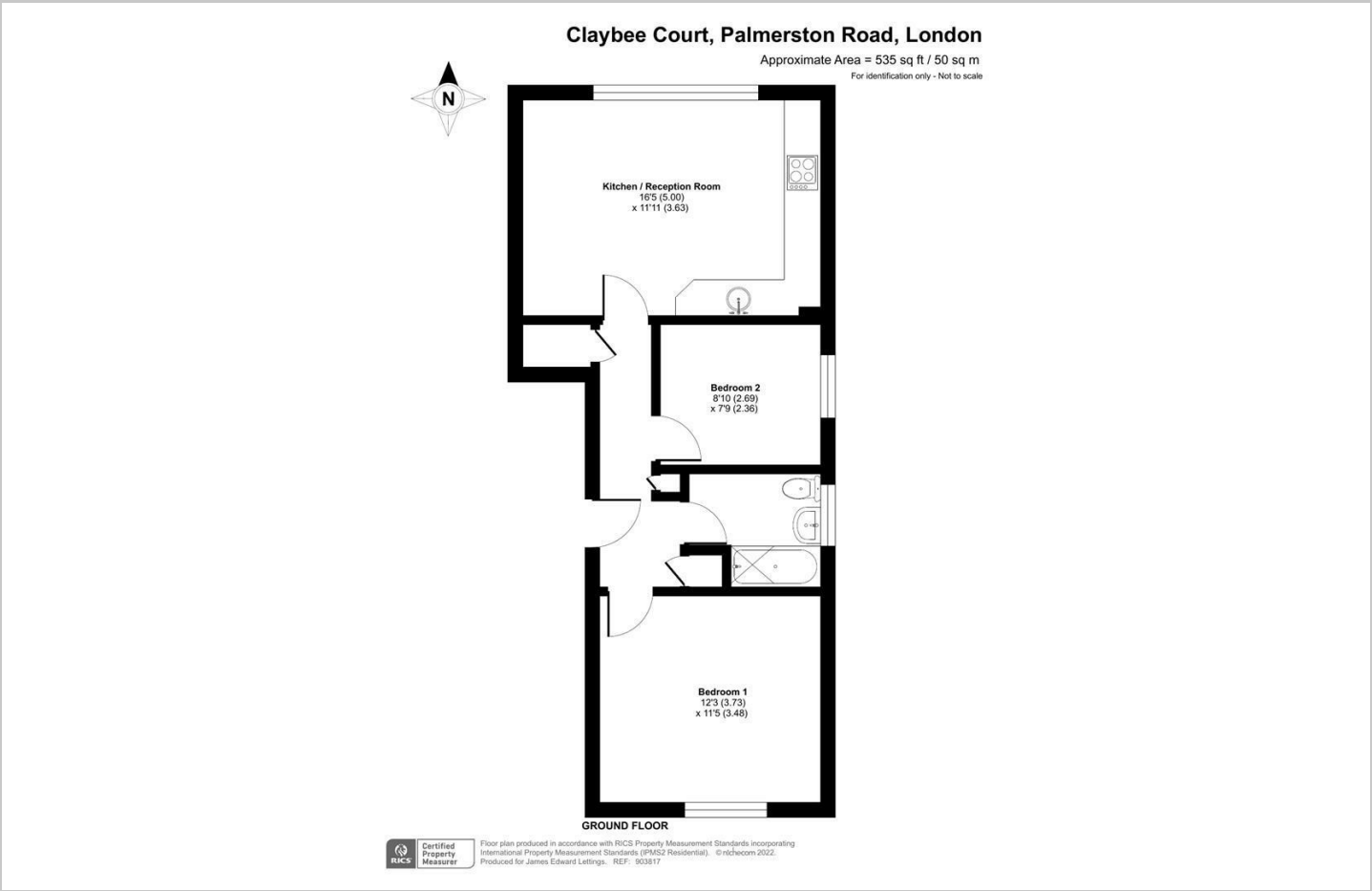
Newly refurbished charming two bedroom apartment located on the ground floor of this peaceful purpose built apartment block, with communal gardens. Close to Bounds Green and Bowes Park Stations, with the New River & Broomfield Park nearby for peaceful strolls.

- Ground Floor
- Communal Gardens
- Purpose Built Apartment Block
- Close to Bowes Park & Bounds Green Stations
- Excellent Storage Throughout
- Newly Refurbished
- Furnished
- Available mid June
- Double Glazed Windows
- Parks & New River Nearby

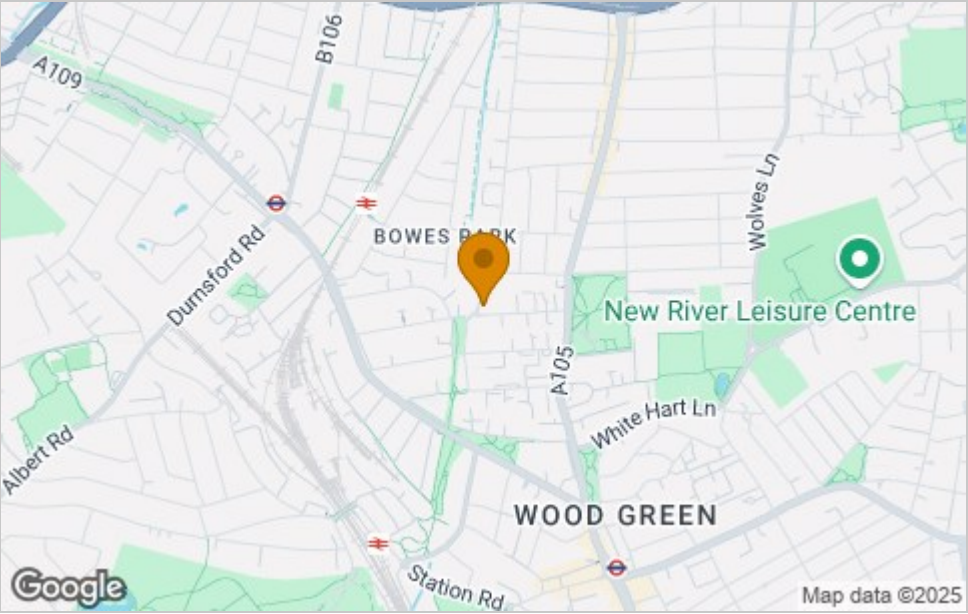




Floor Plan



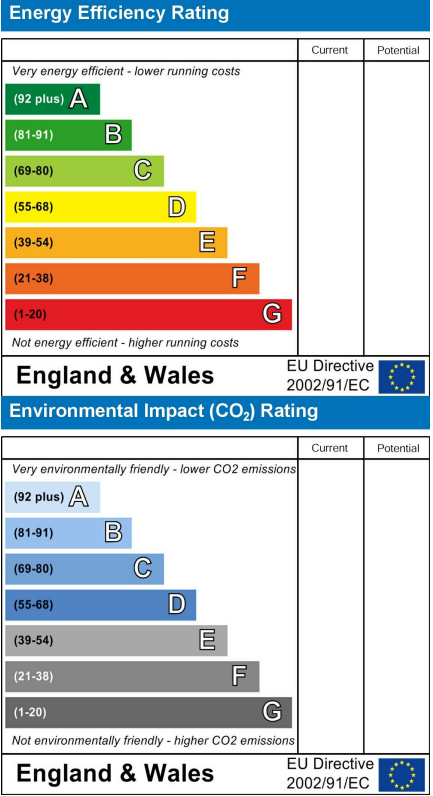
Area Map



Viewing

Please contact our James Edward Office on 020 7952 5197 if you wish to arrange a viewing appointment for this property or require further information.

Energy Efficiency Graph



These particulars, whilst believed to be accurate are set out as a general outline only for guidance and do not constitute any part of an offer or contract. Intending purchasers should not rely on them as statements of representation of fact, but must satisfy themselves by inspection or otherwise as to their accuracy. No person in this firms employment has the authority to make or give any representation or warranty in respect of the property.