

JAMES EDWARD

Comprehensively Cared For

Hamilton Park

, London, N5 1SH

£1,500,000



3



2

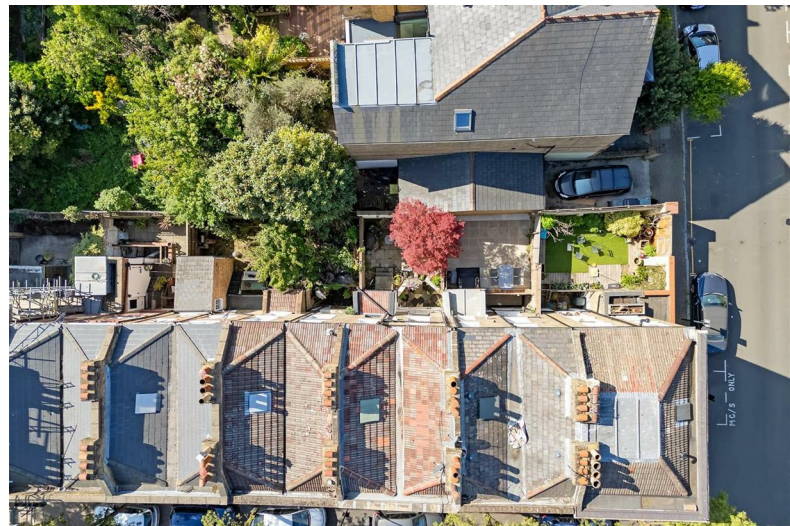


2



D

Hamilton Park



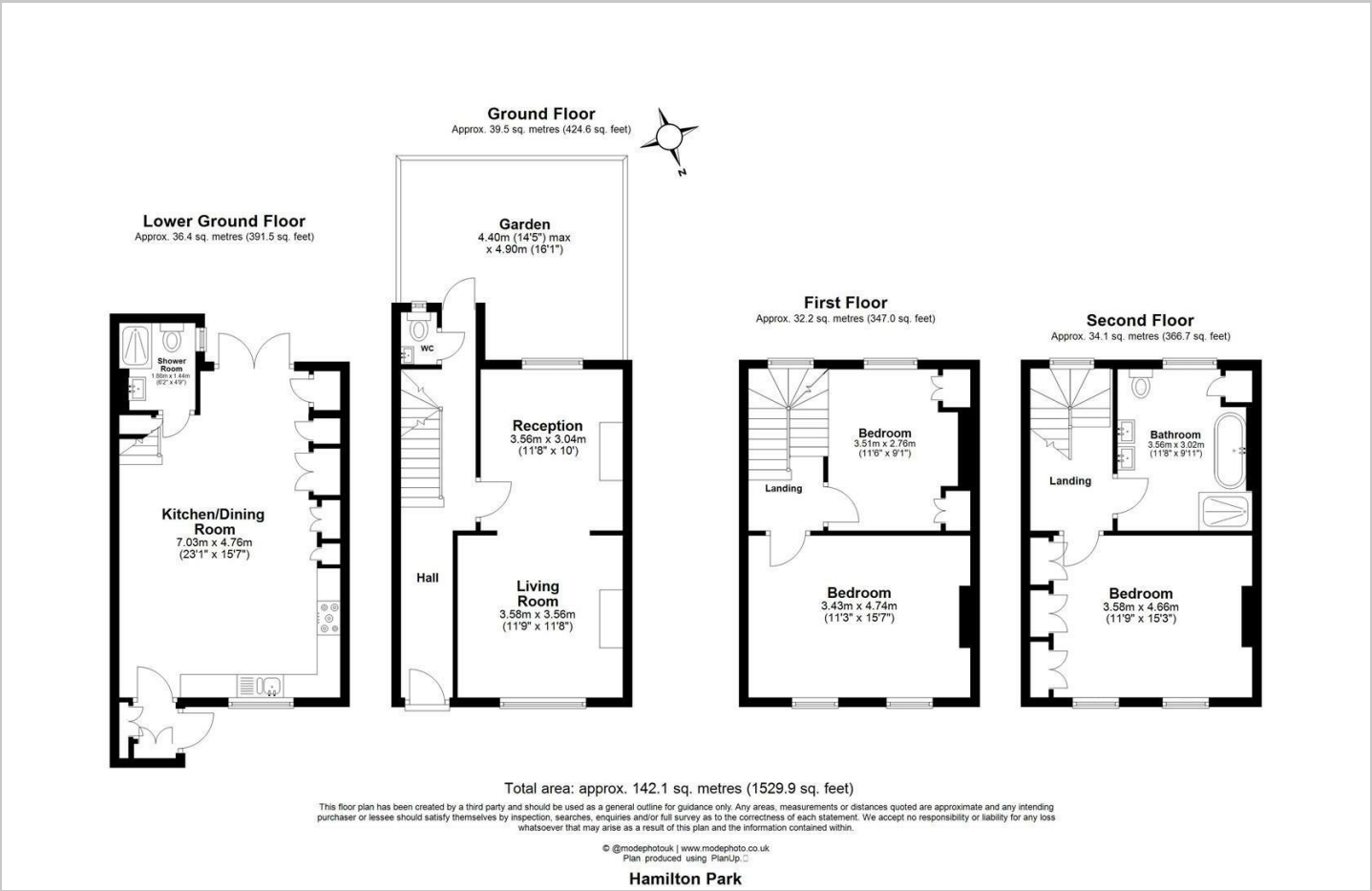
Description

A three bedroom, two reception room house located on this prime street where houses rarely come to market, with all the amenities of Highbury Barn on the doorstep.

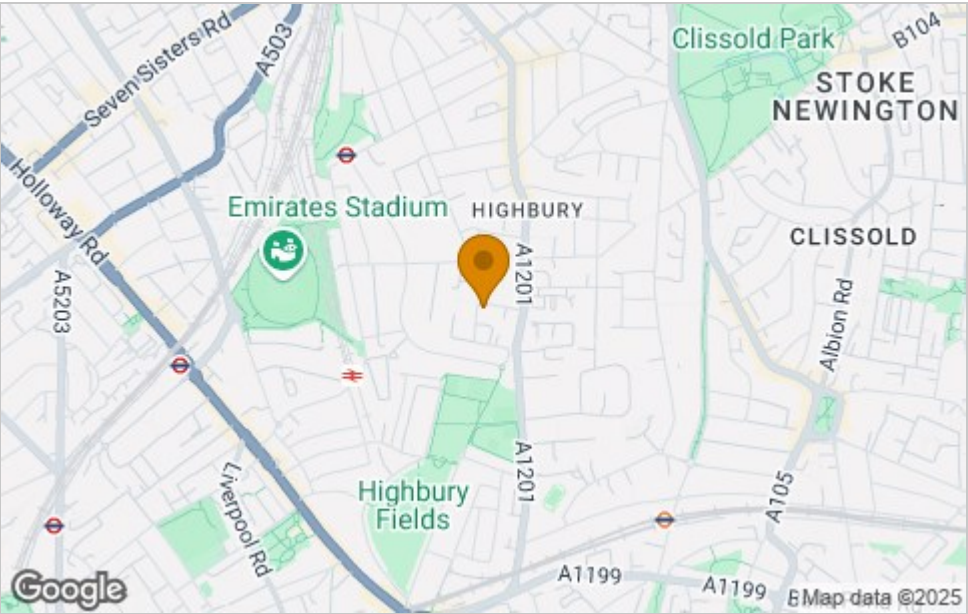
- Three Bedrooms
- Brilliant Location
- Highbury Barn on Doorstep
- Close to Transport & Parks
- Chain Free
- Two Reception Rooms
- Peaceful Street
- Large Kitchen Diner
- "Outstanding" Schools Nearby
- Freehold



Floor Plan



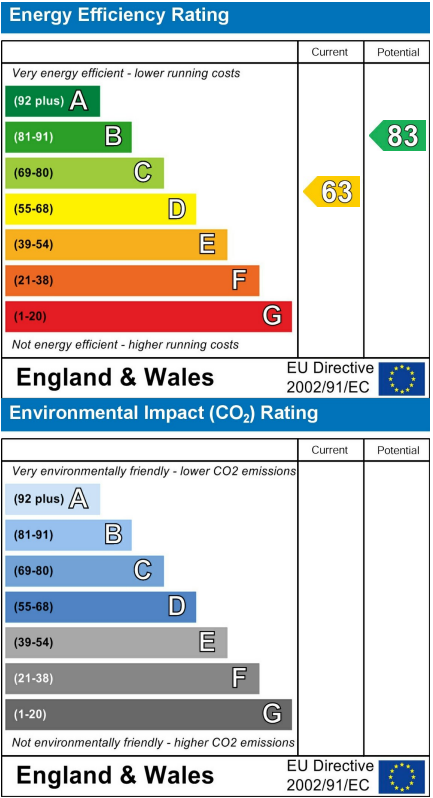
Area Map



Viewing

Please contact our James Edward Office on 020 7952 5197 if you wish to arrange a viewing appointment for this property or require further information.

Energy Efficiency Graph



These particulars, whilst believed to be accurate are set out as a general outline only for guidance and do not constitute any part of an offer or contract. Intending purchasers should not rely on them as statements of representation of fact, but must satisfy themselves by inspection or otherwise as to their accuracy. No person in this firms employment has the authority to make or give any representation or warranty in respect of the property.