

JAMES EDWARD

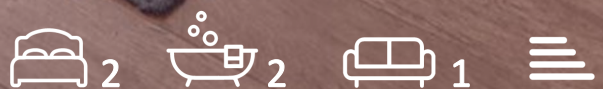
Comprehensively Cared For



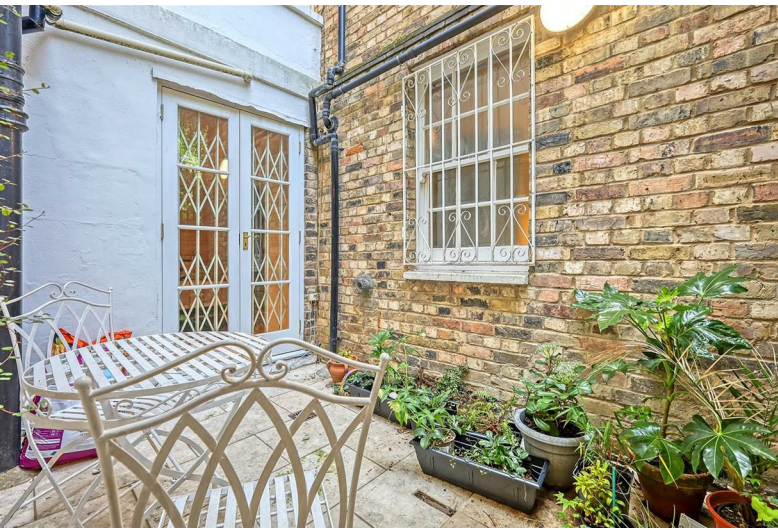
Highbury Park

, London, N5 1TH

Offers In Excess Of £700,000



Highbury Park



Description

Situated on a private road is this exceptionally large, two bedroom apartment in Prime Highbury, offering your own direct entrance and private patio area, a stone's throw from Highbury Fields and Highbury Barn.

- Private Entrance
- Chain Free
- Private Patio
- Close to Highbury Fields & Highbury Barn
- 970 sq ft
- Share of Freehold
- Two Double Bedrooms
- Two Bathrooms
- Close to Highbury & Islington
- Private Road

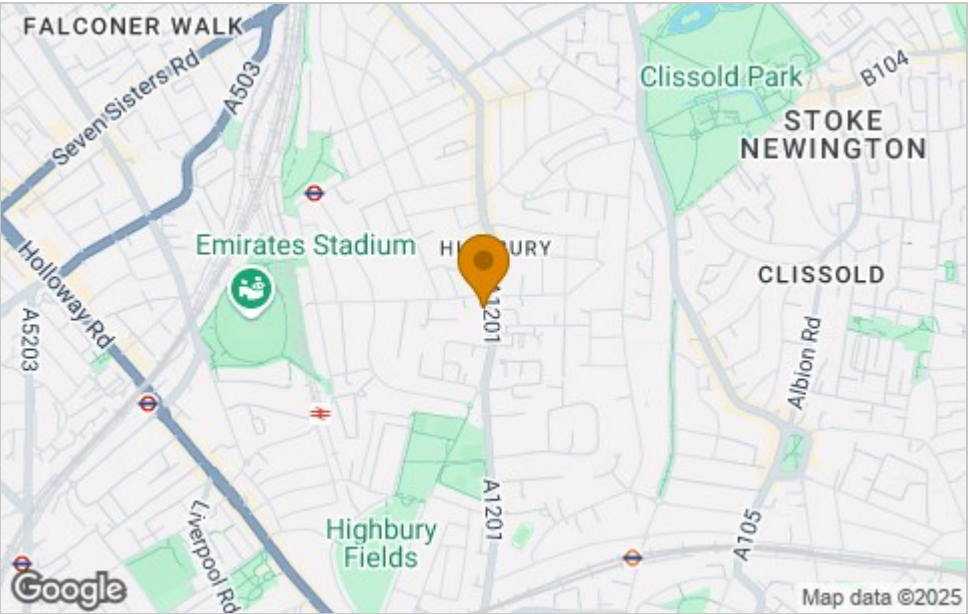




Floor Plan



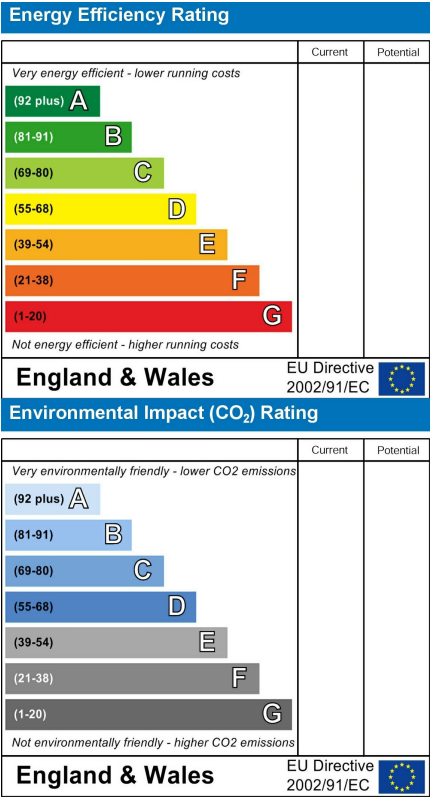
Area Map



Viewing

Please contact our James Edward Office on 020 7952 5197 if you wish to arrange a viewing appointment for this property or require further information.

Energy Efficiency Graph



These particulars, whilst believed to be accurate are set out as a general outline only for guidance and do not constitute any part of an offer or contract. Intending purchasers should not rely on them as statements of representation of fact, but must satisfy themselves by inspection or otherwise as to their accuracy. No person in this firms employment has the authority to make or give any representation or warranty in respect of the property.