

JAMES EDWARD

Comprehensively Cared For



Anson Road

, London, NW2 6AD

£4,250 Per Month



Anson Road

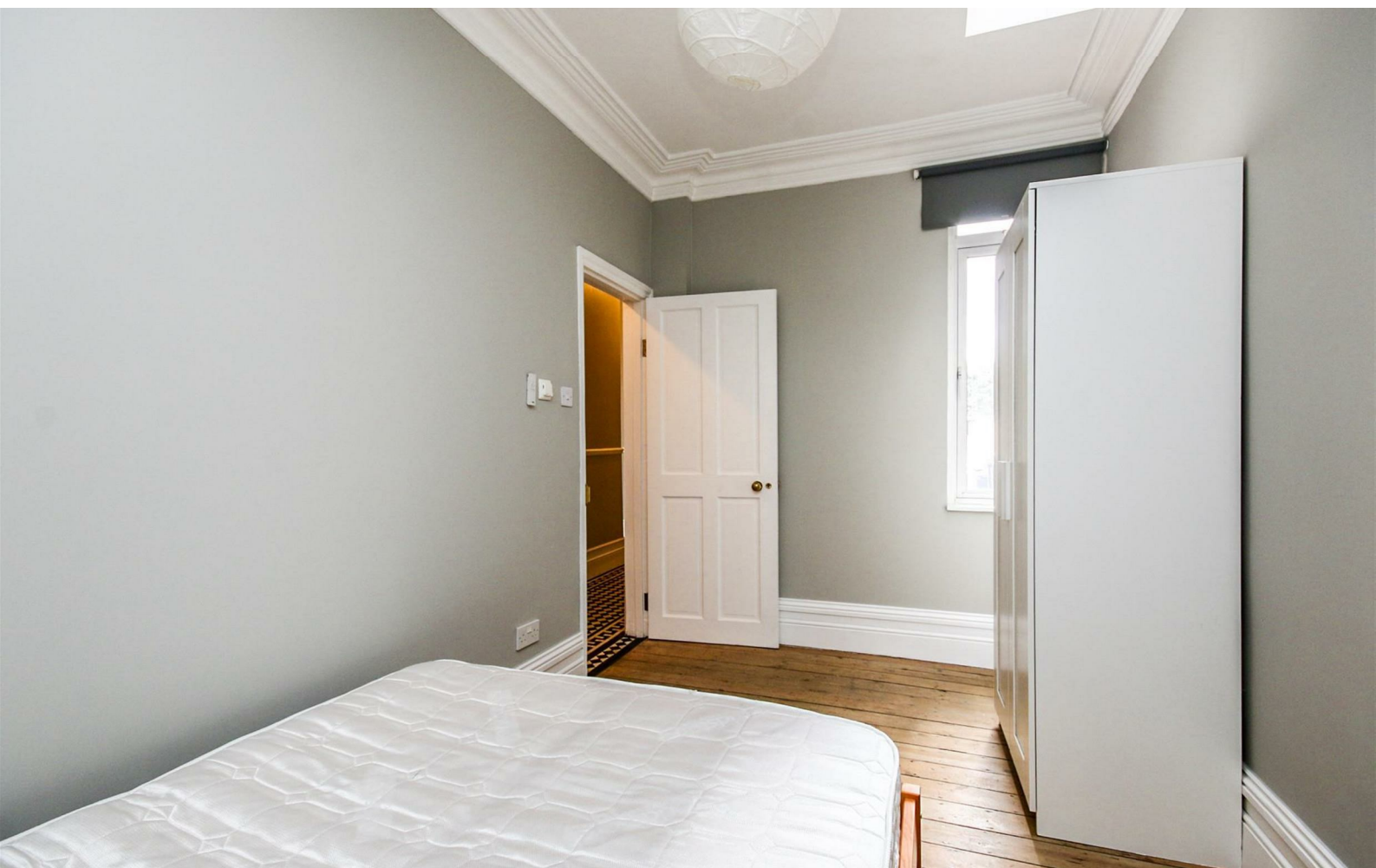


Description

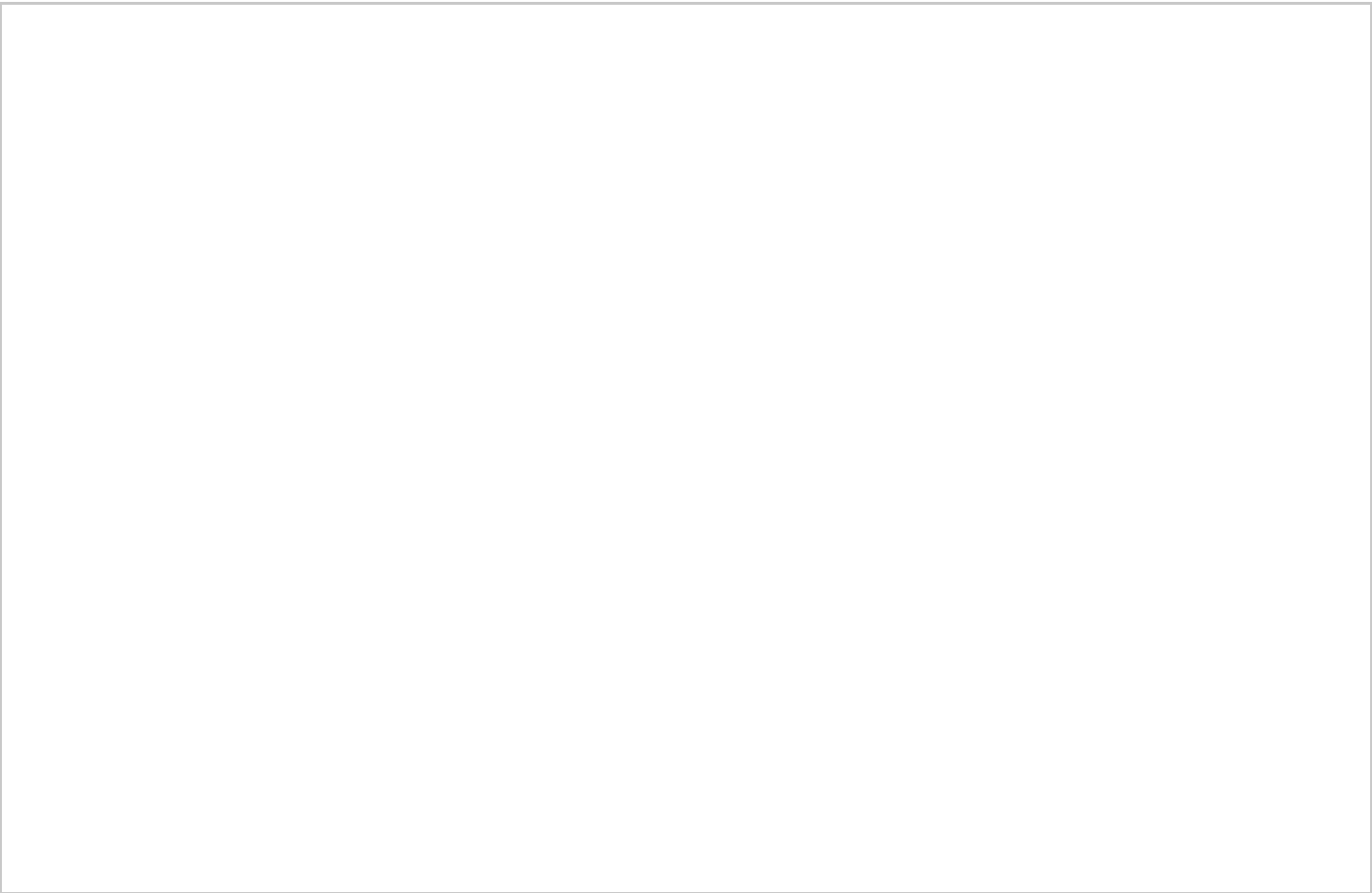
Extremely spacious and characterful four double bedroom, two bathroom period property with private garden and luxurious finish throughout. Cricklewood (Overground) and Willesden Green (Jubilee/Metropolitan) Stations and High Streets are both within close proximity.

- Available Now
- Flexible Furnishings
- Integrated Appliances
- Period Conversion
- Two Bathrooms
- Exposed Brickwork
- Four Double Bedrooms
- Open plan kitchen/living space
- Private Garden





Floor Plan



Area Map



Viewing

Please contact our James Edward Office on 020 7952 5197 if you wish to arrange a viewing appointment for this property or require further information.

Energy Efficiency Graph



These particulars, whilst believed to be accurate are set out as a general outline only for guidance and do not constitute any part of an offer or contract. Intending purchasers should not rely on them as statements of representation of fact, but must satisfy themselves by inspection or otherwise as to their accuracy. No person in this firms employment has the authority to make or give any representation or warranty in respect of the property.