

# JAMES EDWARD

Comprehensively Cared For



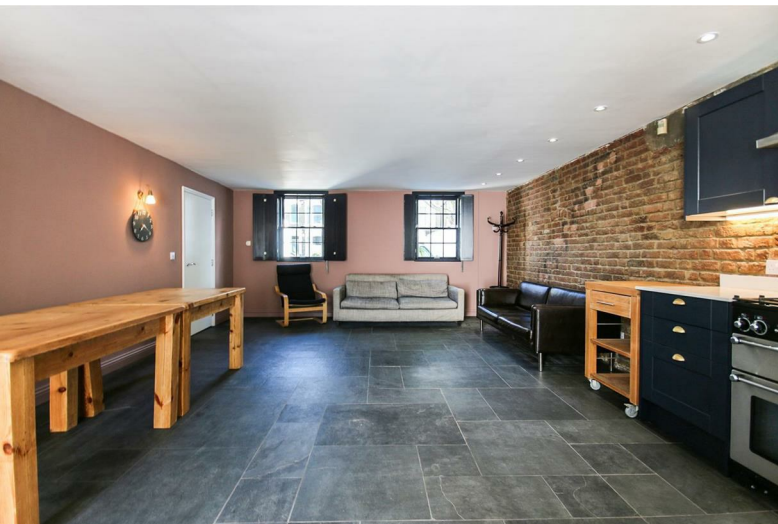
Hanley Road

, London, N4 3DU

£5,250 Per Month



# Hanley Road



## Description

Newly refurbished apartment, finished to an extremely luxurious standard throughout, offering five double bedrooms, two bathrooms, exposed brickwork and large private garden.

- Available Now
- Exposed Brickwork in Living Room
- Flexible Furnishings
- Open plan kitchen/living space
- Underfloor Heating
- Close to Finsbury Park
- Five Double Bedrooms
- Large Private Garden
- Two Bathrooms

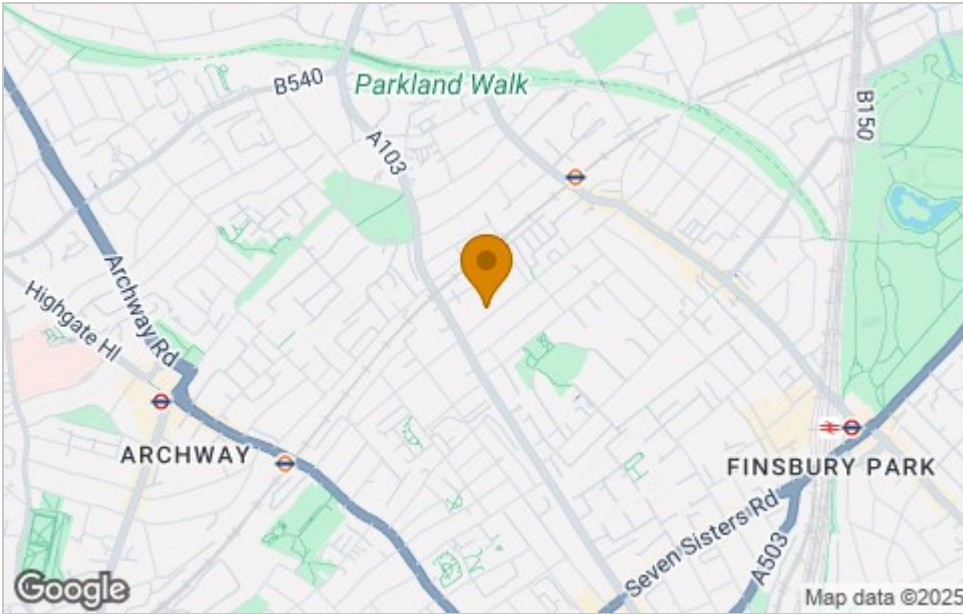




# Floor Plan



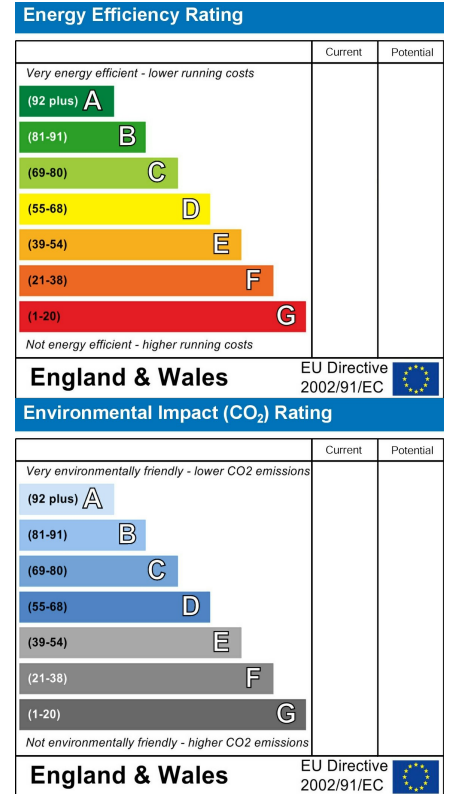
## Area Map



## Viewing

Please contact our James Edward Office on 020 7952 5197 if you wish to arrange a viewing appointment for this property or require further information.

## Energy Efficiency Graph



These particulars, whilst believed to be accurate are set out as a general outline only for guidance and do not constitute any part of an offer or contract. Intending purchasers should not rely on them as statements of representation of fact, but must satisfy themselves by inspection or otherwise as to their accuracy. No person in this firm's employment has the authority to make or give any representation or warranty in respect of the property.

100 Highbury Park, London, N5 2XE

Tel: 020 7952 5197 Email: [info@jamesedwardproperties.co.uk](mailto:info@jamesedwardproperties.co.uk) <https://www.jamesedwardproperties.co.uk>