

# JAMES EDWARD

Comprehensively Cared For



1 Loxford Gardens

, London, N5 1FW

£650,000





# 1 Loxford Gardens



## Description

Modern two bedroom apartment situated within the desirable Loxford Gardens. Premium development with 24 hour concierge on site and close proximity to Highbury Barn, Highbury Fields, Highbury & Islington and Arsenal Stations.

- On Site 24 Hour Concierge / Security
- Close to Highbury & Islington and Arsenal Stations
- Open plan kitchen / living room
- First Floor w/ Lift
- Two Double Bedrooms
- Modern Development
- Close to Highbury Fields & Clissold Park
- Underfloor heating
- 765 sq ft
- Two Bathrooms

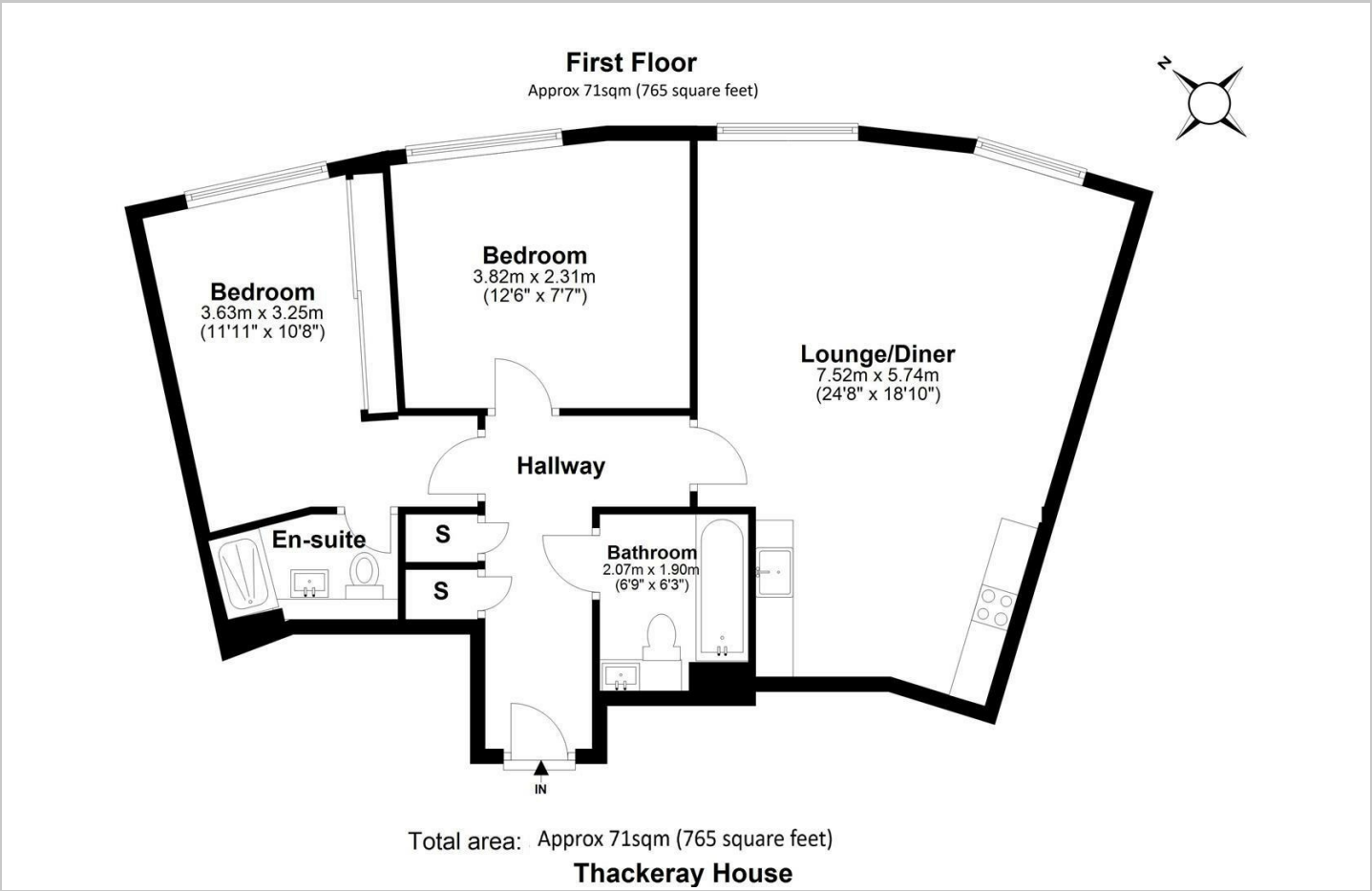




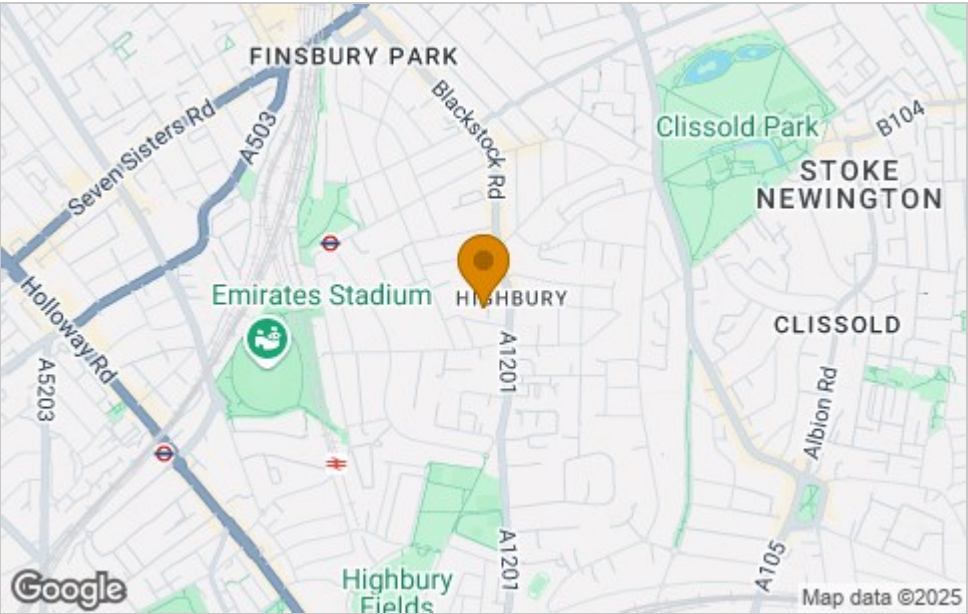




Floor Plan



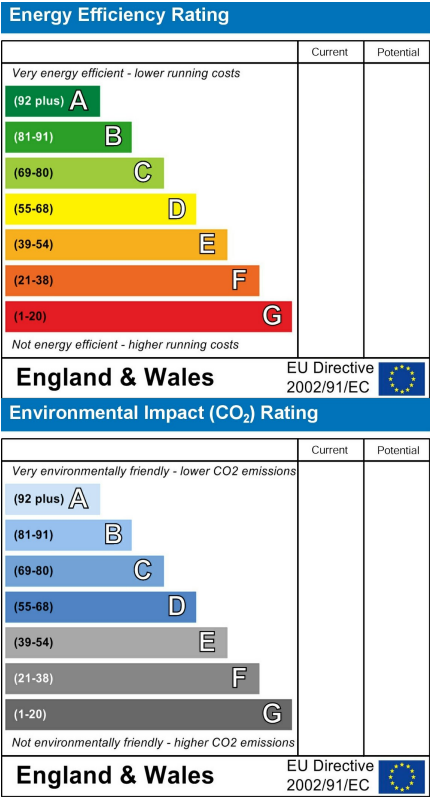
Area Map



Viewing

Please contact our James Edward Office on 020 7952 5197 if you wish to arrange a viewing appointment for this property or require further information.

Energy Efficiency Graph



These particulars, whilst believed to be accurate are set out as a general outline only for guidance and do not constitute any part of an offer or contract. Intending purchasers should not rely on them as statements of representation of fact, but must satisfy themselves by inspection or otherwise as to their accuracy. No person in this firms employment has the authority to make or give any representation or warranty in respect of the property.