

JAMES EDWARD

Comprehensively Cared For

Lucerne Road

, London, N5 1TZ

Offers In Excess Of £1,750,000



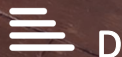
6



3



2



D

Lucerne Road



Description

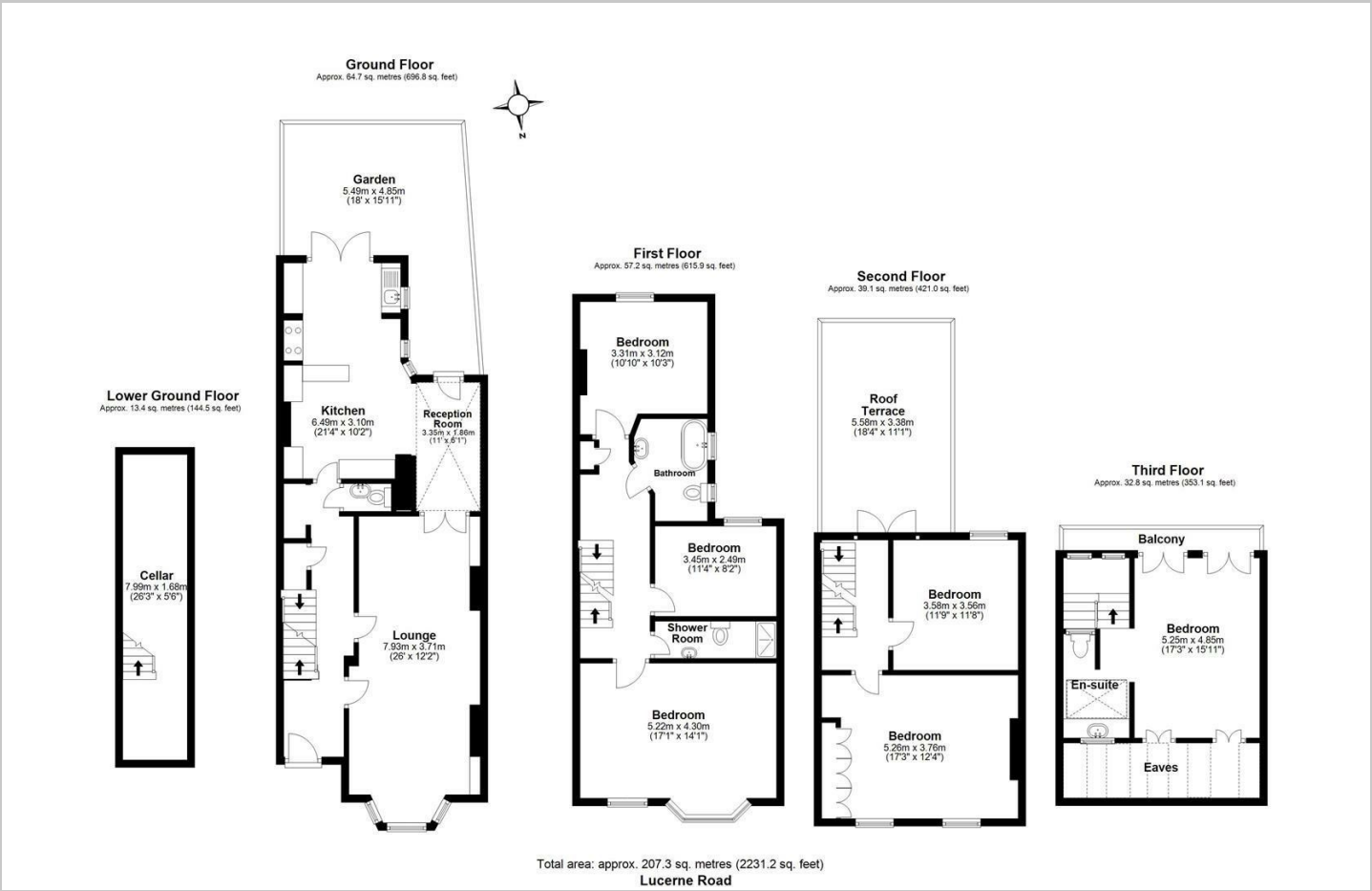
Impressive Six Bedroom Victorian Terraced House, arranged over 4 floors, situated on a quiet street in Prime Highbury. Close to Highbury Barn, Highbury Fields and Highbury & Islington Station.

- Victorian Terraced House
- Six Bedrooms
- Close to Highbury Fields
- South Facing Garden & Large Roof Terrace
- Cellar
- Arranged Over Four Floors
- 2250 Sq Ft
- Close to Highbury & Islington and Arsenal Stations
- Chain Free
- Quiet Tree Lined Street

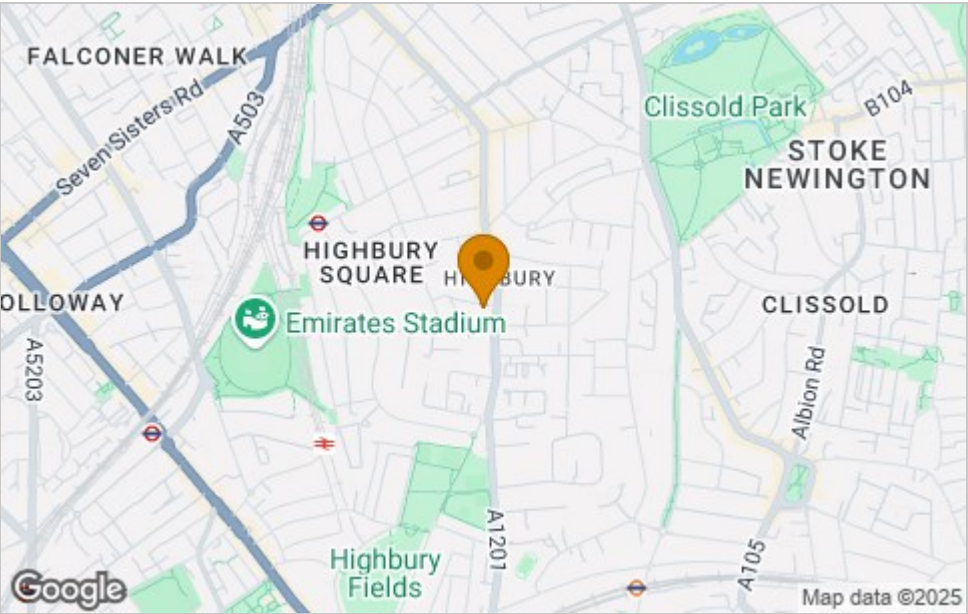




Floor Plan



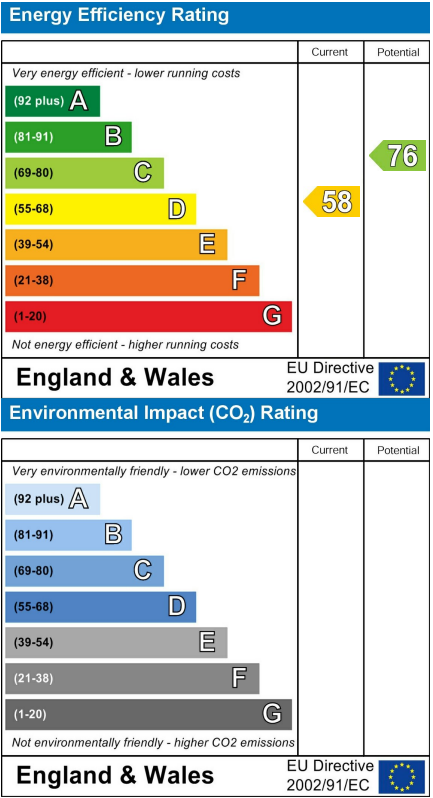
Area Map



Viewing

Please contact our James Edward Office on 020 7952 5197 if you wish to arrange a viewing appointment for this property or require further information.

Energy Efficiency Graph



These particulars, whilst believed to be accurate are set out as a general outline only for guidance and do not constitute any part of an offer or contract. Intending purchasers should not rely on them as statements of representation of fact, but must satisfy themselves by inspection or otherwise as to their accuracy. No person in this firms employment has the authority to make or give any representation or warranty in respect of the property.