

# JAMES EDWARD

Comprehensively Cared For



## Greville Lodge

Avenue Road, London, N6 5DP

£500,000



# Greville Lodge



## Description

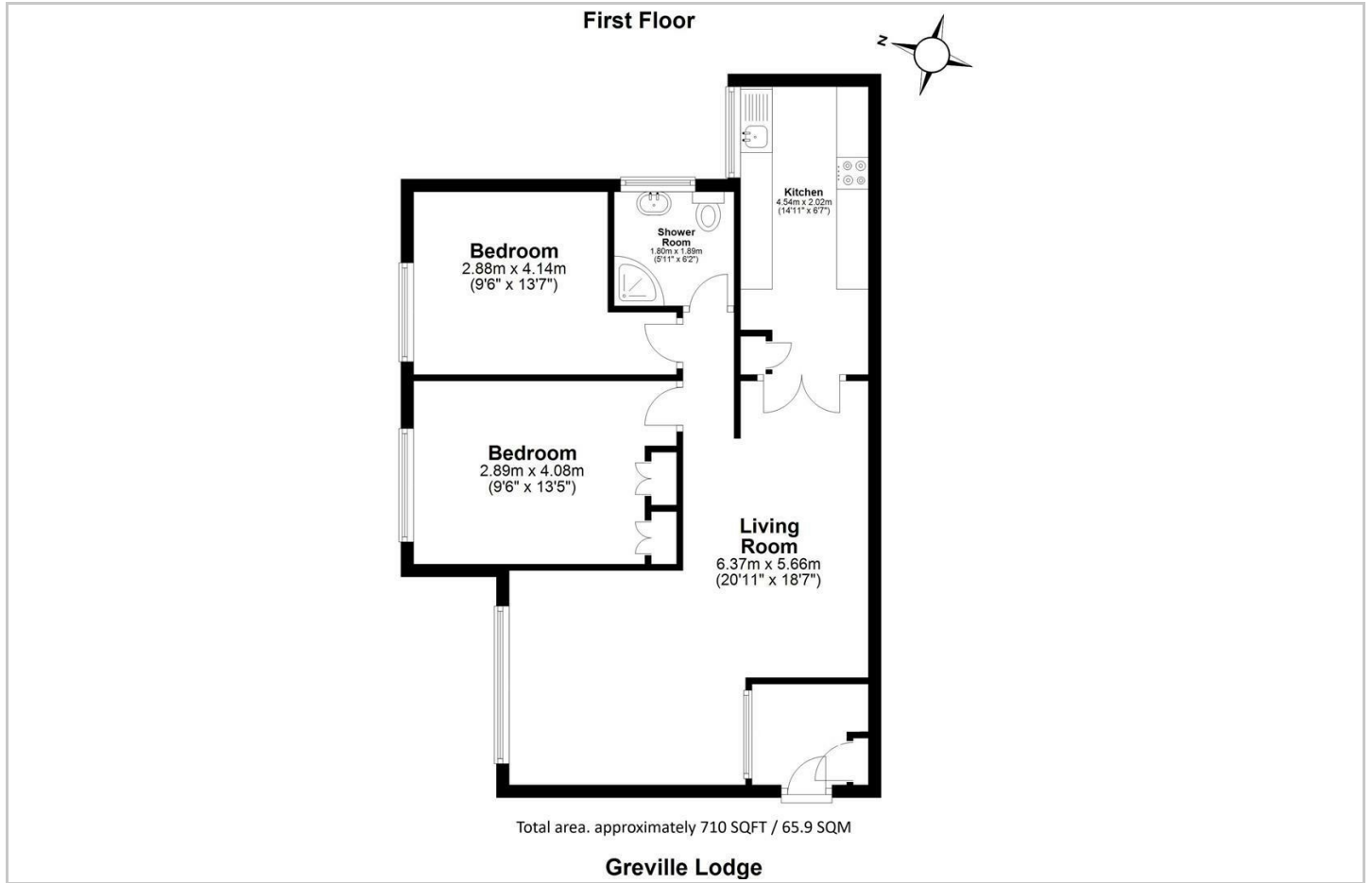
Spacious lateral two bedroom apartment, situated on the first floor of an immaculately maintained purpose built block. Features include communal garden, private garage and additional storage room.

- 10 Minute Walk to Crouch End Broadway
- Chain Free
- Private Garage
- Two Double Bedrooms
- Wooden Flooring
- 10 Minute Walk to Highgate Station
- Communal Garden
- Separate Kitchen/Living Room
- Newly Redecorated
- Separate Private Storage Room

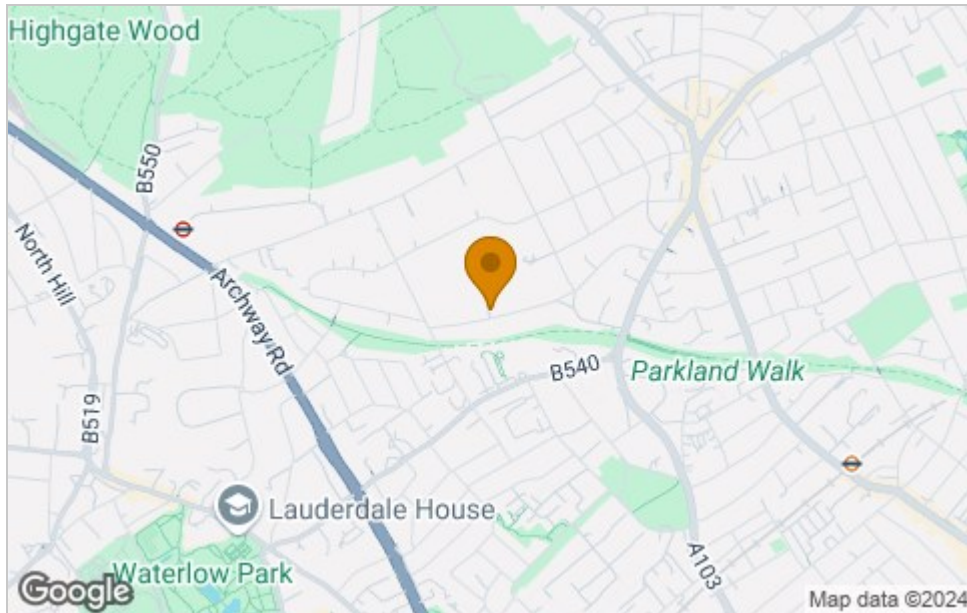




# Floor Plan



# Area Map



# Viewing

Please contact our James Edward Office on 020 7952 5197 if you wish to arrange a viewing appointment for this property or require further information.

These particulars, whilst believed to be accurate are set out as a general outline only for guidance and do not constitute any part of an offer or contract. Intending purchasers should not rely on them as statements of representation of fact, but must satisfy themselves by inspection or otherwise as to their accuracy. No person in this firm's employment has the authority to make or give any representation or warranty in respect of the property.

100 Highbury Park, London, N5 2XE  
 Tel: 020 7952 5197 Email: info@jamesedwardproperties.co.uk <https://www.jamesedwardproperties.co.uk>

# Energy Efficiency Graph

