

JAMES EDWARD

Comprehensively Cared For



Queens Head Street

, London, N1 8NQ

£700,000

 2  1  1 

Queens Head Street



Description

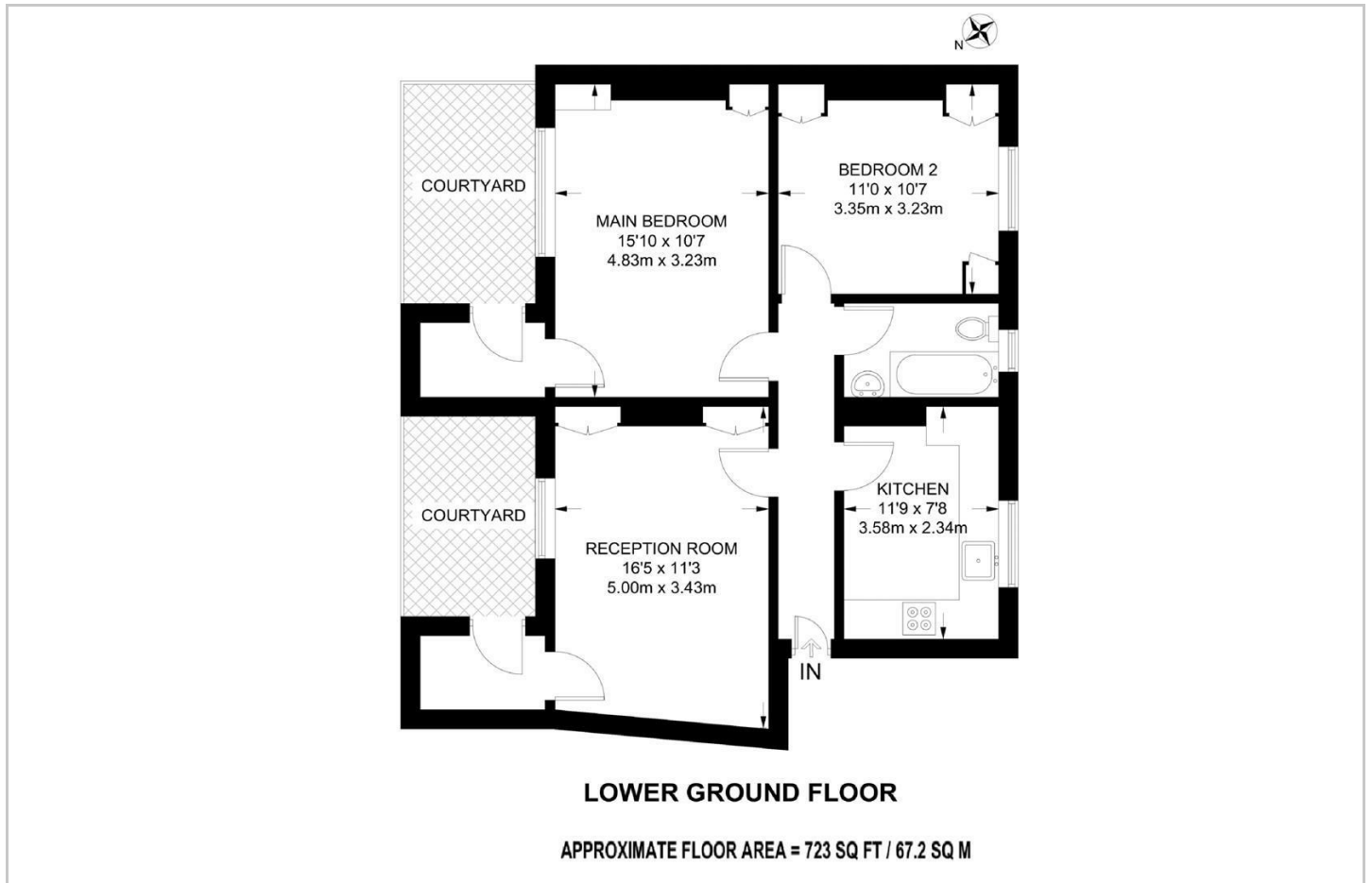
Forming part of an impressive Victorian conversion, is this spacious two bedroom flat with communal garden. Centrally located in Angel, just minutes' from the station and all of the amenities Upper Street has to offer.

- Share of Freehold
- Two Double Bedrooms
- Prime Angel Location
- Chain Free
- Separate Living Room / Kitchen
- Low Service Charge
- Communal Garden
- Lower Ground Floor

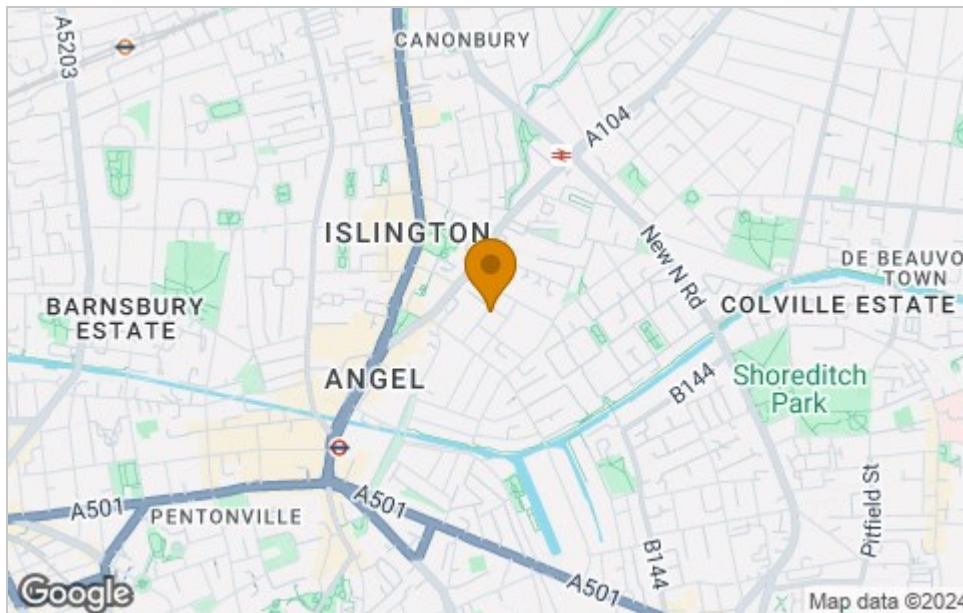




Floor Plan



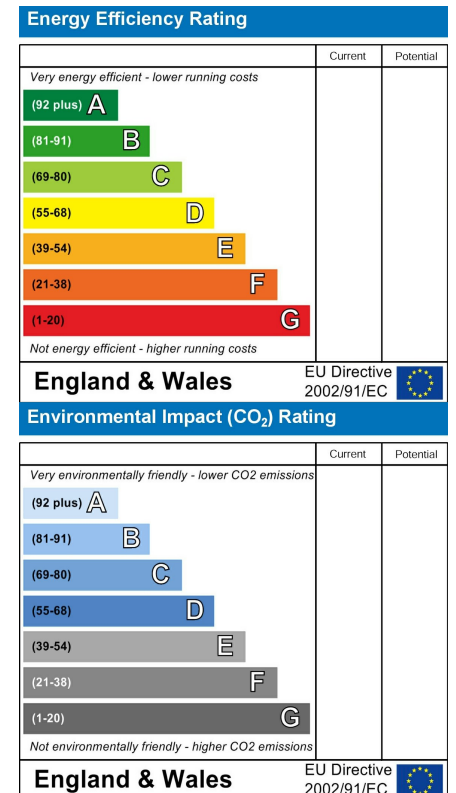
Area Map



Viewing

Please contact our James Edward Office on 020 7952 5197 if you wish to arrange a viewing appointment for this property or require further information.

Energy Efficiency Graph



These particulars, whilst believed to be accurate are set out as a general outline only for guidance and do not constitute any part of an offer or contract. Intending purchasers should not rely on them as statements of representation of fact, but must satisfy themselves by inspection or otherwise as to their accuracy. No person in this firm's employment has the authority to make or give any representation or warranty in respect of the property.

100 Highbury Park, London, N5 2XE

Tel: 020 7952 5197 Email: info@jamesedwardproperties.co.uk <https://www.jamesedwardproperties.co.uk>