

JAMES EDWARD

Comprehensively Cared For



Adolphus Road

, London, N4 2AZ

£475,000



1



1



1



Adolphus Road



Description

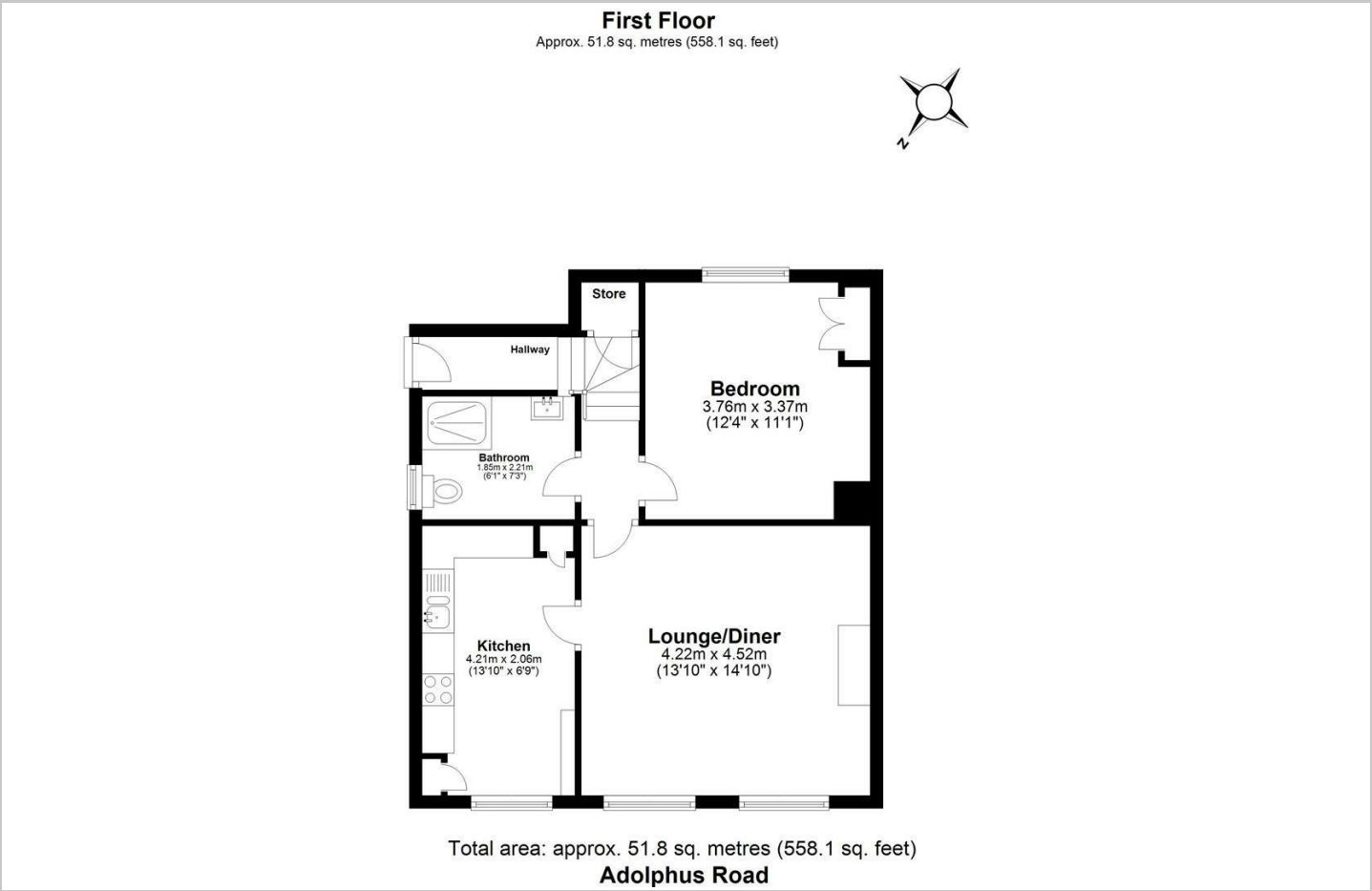
Spacious one bedroom apartment which has undergone a recent full refurbishment, ideally located with Finsbury Park Station just a 10 minute walk away.

- Period Conversion
- Share of Freehold
- 560 sq ft
- Close to Amenities of Highbury and Finsbury Park
- Newly Refurbished
- First Floor
- 10 Minute Walk to Finsbury Park Station
- High Specification

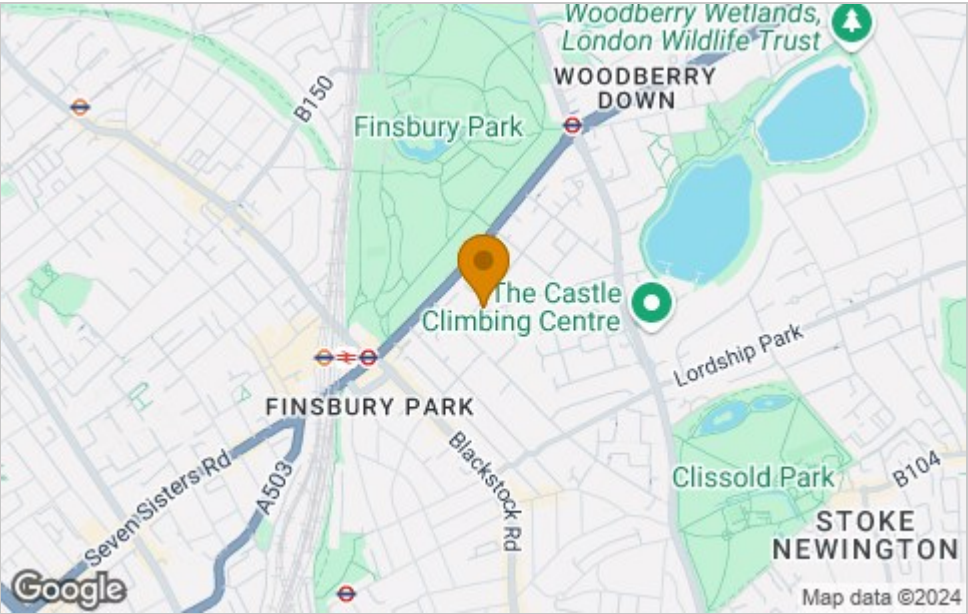




Floor Plan



Area Map



Viewing

Please contact our James Edward Office on 020 7952 5197 if you wish to arrange a viewing appointment for this property or require further information.

These particulars, whilst believed to be accurate are set out as a general outline only for guidance and do not constitute any part of an offer or contract. Intending purchasers should not rely on them as statements of representation of fact, but must satisfy themselves by inspection or otherwise as to their accuracy. No person in this firms employment has the authority to make or give any representation or warranty in respect of the property.

Energy Efficiency Graph

