

JAMES EDWARD

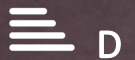
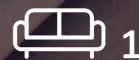
Comprehensively Cared For



Sotheby Road

, London, N5 2UT

£1,250 Per Month



Sotheby Road



Description

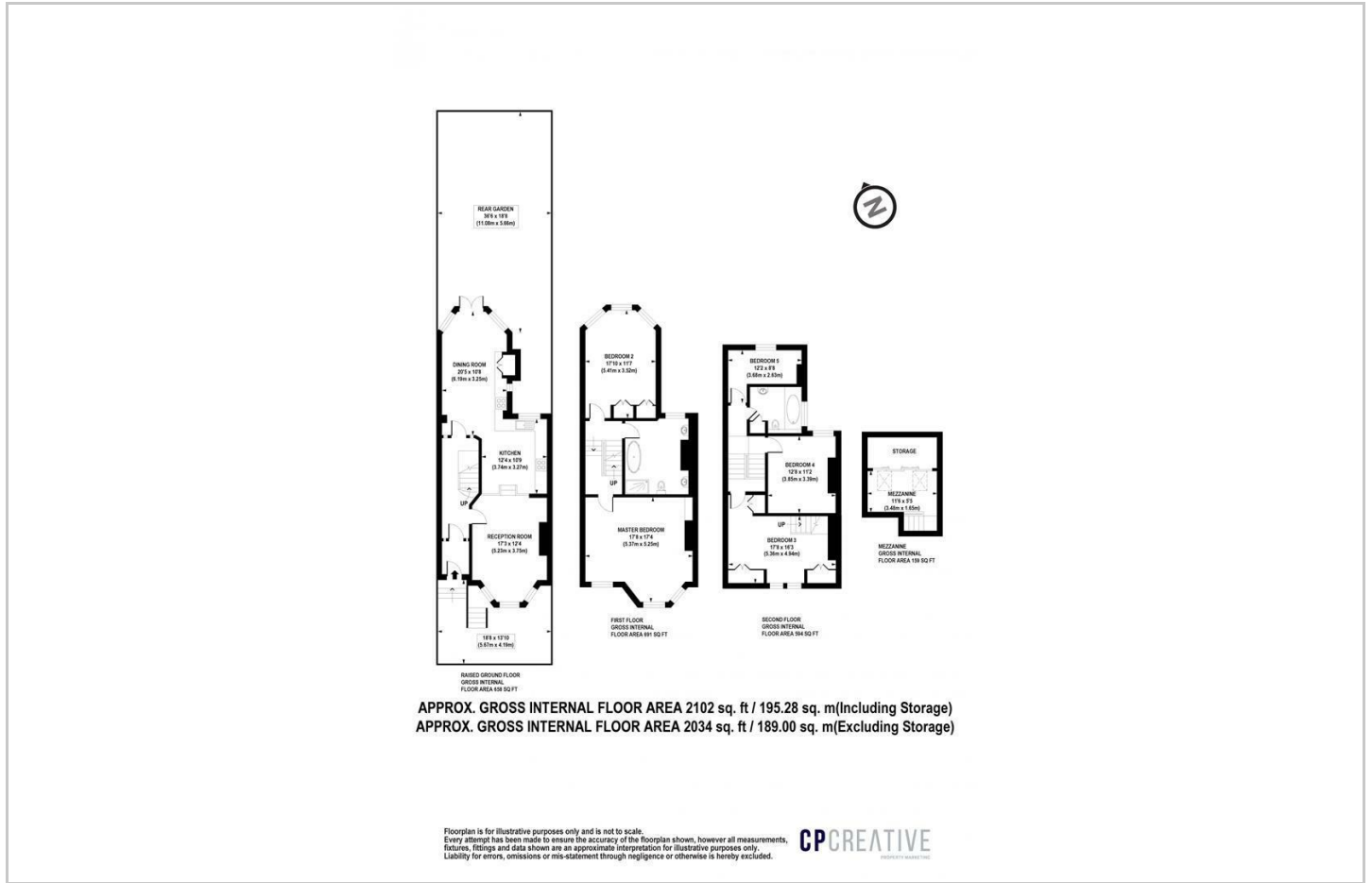
A beautiful and spacious furnished double bedroom located at the rear of this stunning house including all bills (and internet).

- All Bills Included
- Close to Clissold Park
- Garden
- Sought After Location
- Brilliant Transport Links
- Close to Highbury Fields
- Double Bedroom
- Two Bathrooms

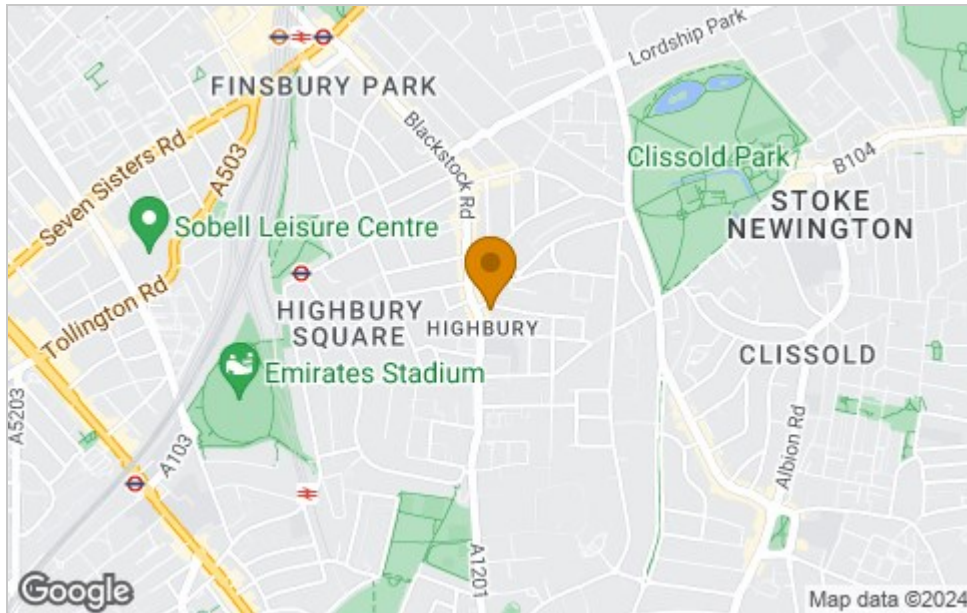




Floor Plan



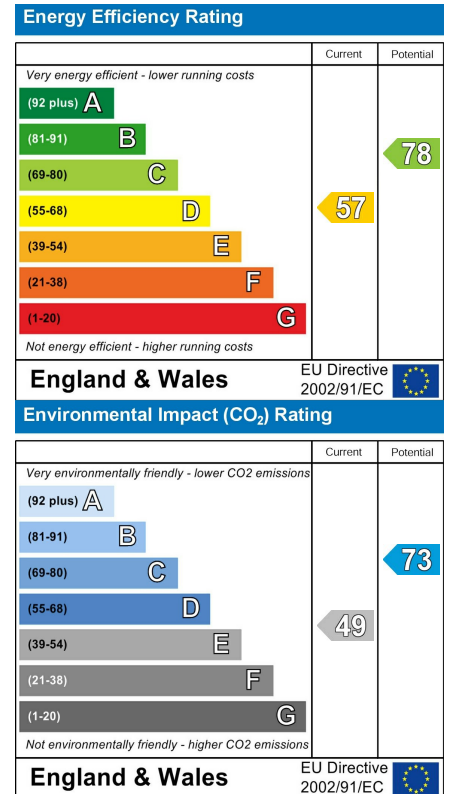
Area Map



Viewing

Please contact our James Edward Office on 020 7952 5197 if you wish to arrange a viewing appointment for this property or require further information.

Energy Efficiency Graph



These particulars, whilst believed to be accurate are set out as a general outline only for guidance and do not constitute any part of an offer or contract. Intending purchasers should not rely on them as statements of representation of fact, but must satisfy themselves by inspection or otherwise as to their accuracy. No person in this firm's employment has the authority to make or give any representation or warranty in respect of the property.