

JAMES EDWARD

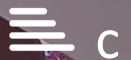
Comprehensively Cared For



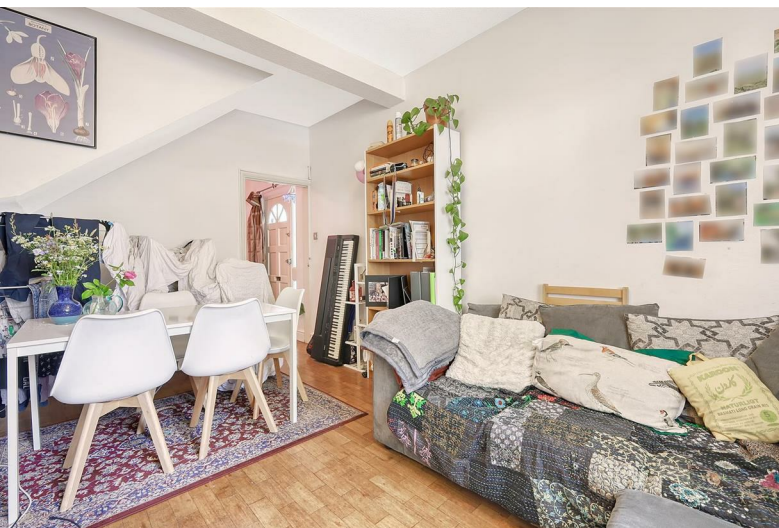
Witley Court

1 Witley Road, London, N19 5SQ

£3,800 Per Month



Witley Court



Description

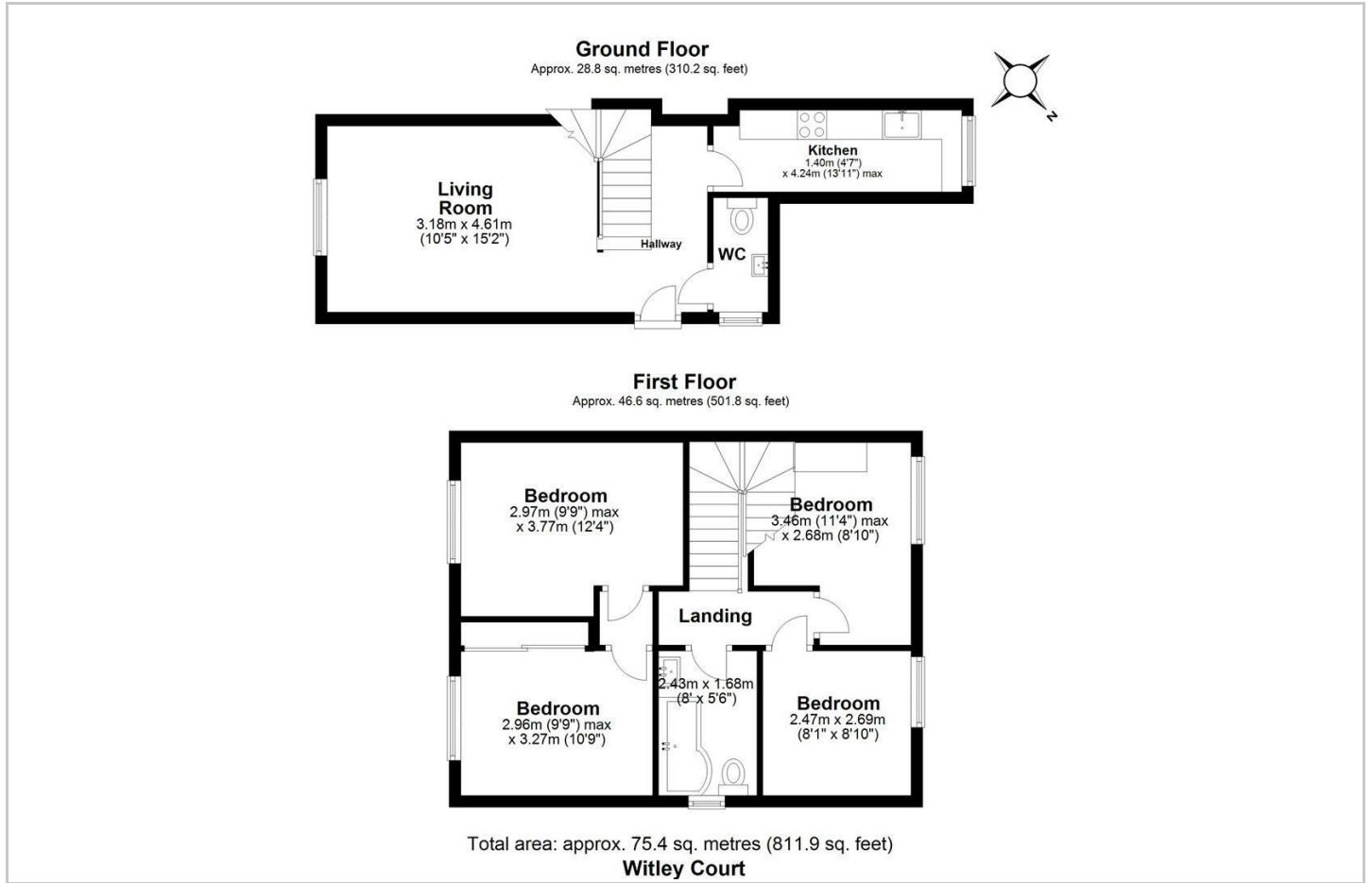
A brilliantly located four double bedroom split level maisonette tucked away in this quiet turning with Archway tube and all local amenities on the doorstep.

- Ample Bus Routes Nearby
- Close to Ample Shops
- Four Double Bedrooms
- Next to Archway Tube Station
- Available End of July
- Flexible Furnishing
- Quiet Location
- Ideal for sharers

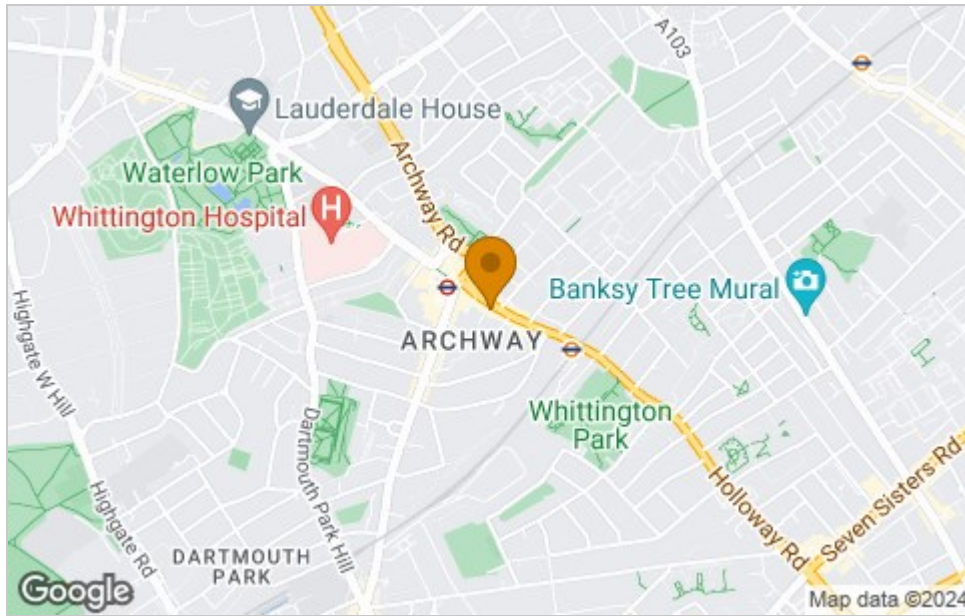




Floor Plan



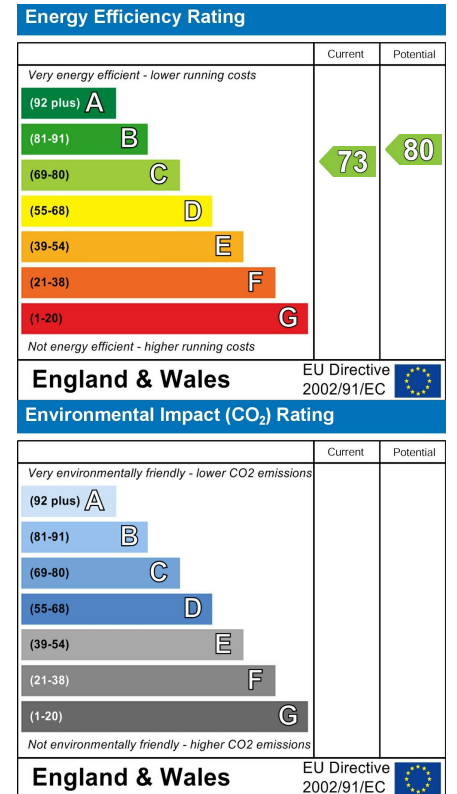
Area Map



Viewing

Please contact our James Edward Office on 020 7952 5197 if you wish to arrange a viewing appointment for this property or require further information.

Energy Efficiency Graph



These particulars, whilst believed to be accurate are set out as a general outline only for guidance and do not constitute any part of an offer or contract. Intending purchasers should not rely on them as statements of representation of fact, but must satisfy themselves by inspection or otherwise as to their accuracy. No person in this firm's employment has the authority to make or give any representation or warranty in respect of the property.

100 Highbury Park, London, N5 2XE

Tel: 020 7952 5197 Email: info@jamesedwardproperties.co.uk <https://www.jamesedwardproperties.co.uk>