

# JAMES EDWARD

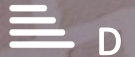
Comprehensively Cared For



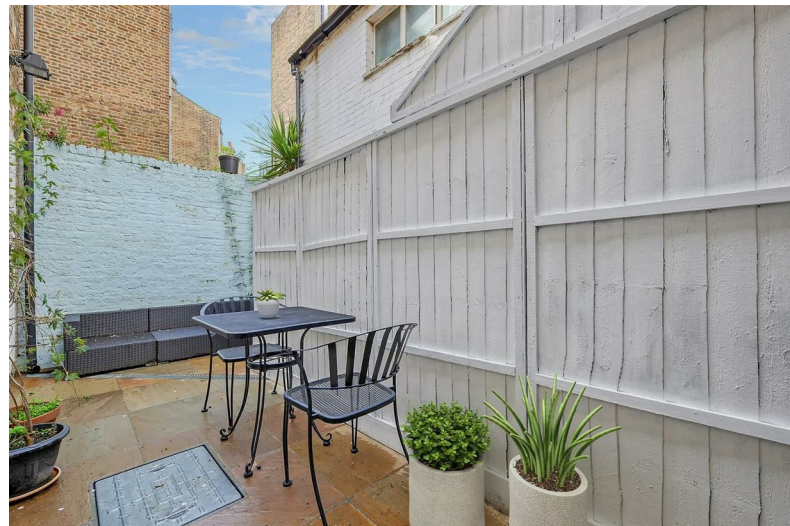
Mountgrove Road

, London, N5 2LT

£475,000



# Mountgrove Road



## Description

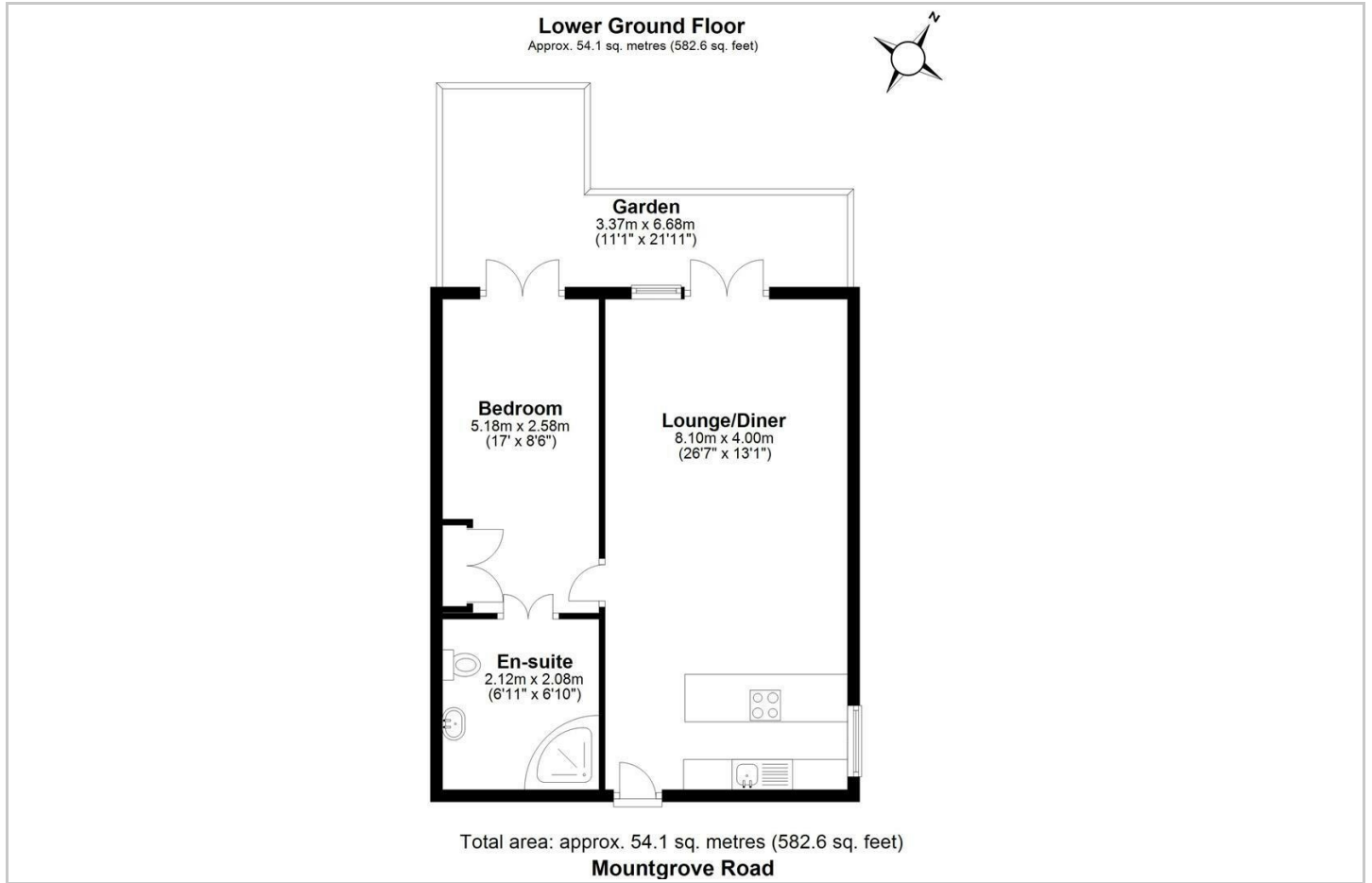
A delightful one bedroom lower ground floor flat with private patio garden located in this incredibly desirable location with Clissold Park, tubes, cafes, shops & buses all on the doorstep.

- Period Conversion
- Very Sought-After Location
- Excellent Transport Links
- Share of Freehold
- Private Garden
- Clissold Park on Doorstep
- Popular Shops & Cafes Very Close By
- Chain Free

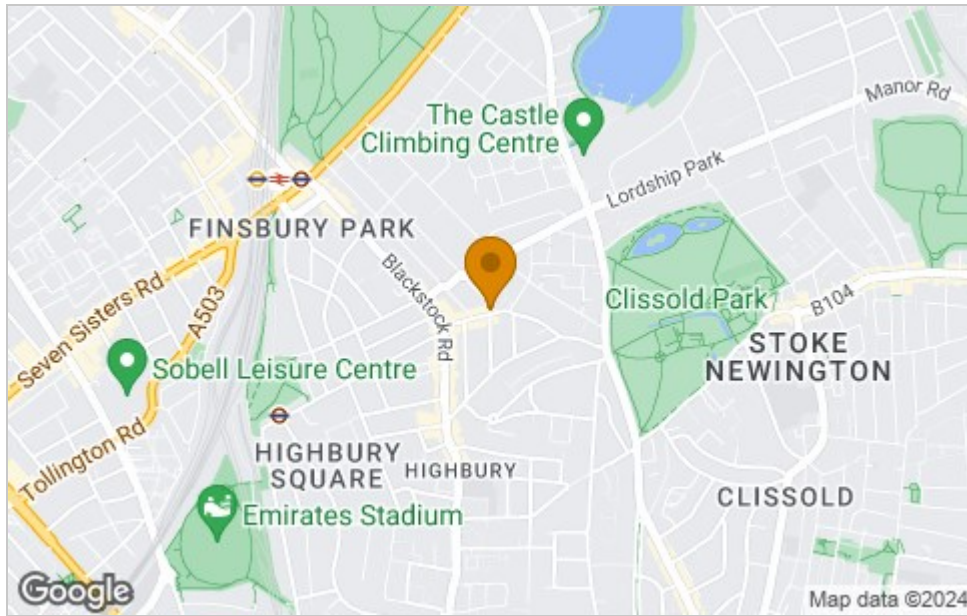




# Floor Plan



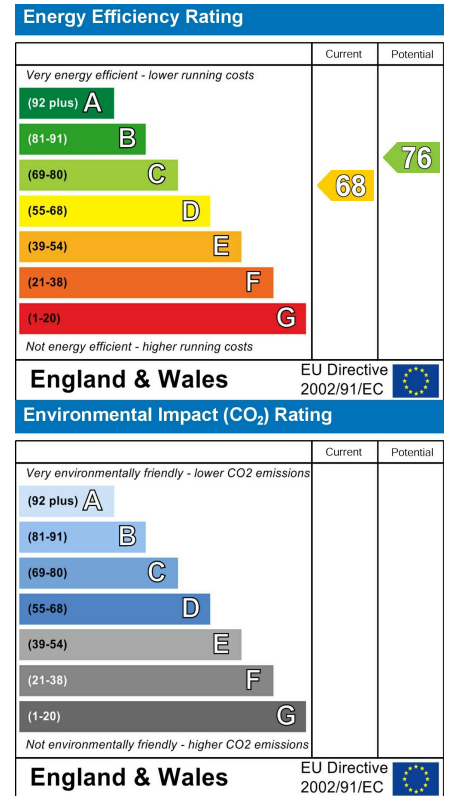
# Area Map



# Viewing

Please contact our James Edward Office on 020 7952 5197 if you wish to arrange a viewing appointment for this property or require further information.

# Energy Efficiency Graph



These particulars, whilst believed to be accurate are set out as a general outline only for guidance and do not constitute any part of an offer or contract. Intending purchasers should not rely on them as statements of representation of fact, but must satisfy themselves by inspection or otherwise as to their accuracy. No person in this firm's employment has the authority to make or give any representation or warranty in respect of the property.