

JAMES EDWARD

Comprehensively Cared For



Alexandra Grove
, London, N4 2LQ

£650,000



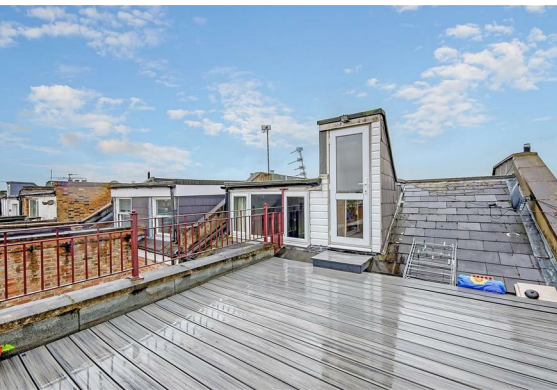
Alexandra Grove

, London, N4 2LQ

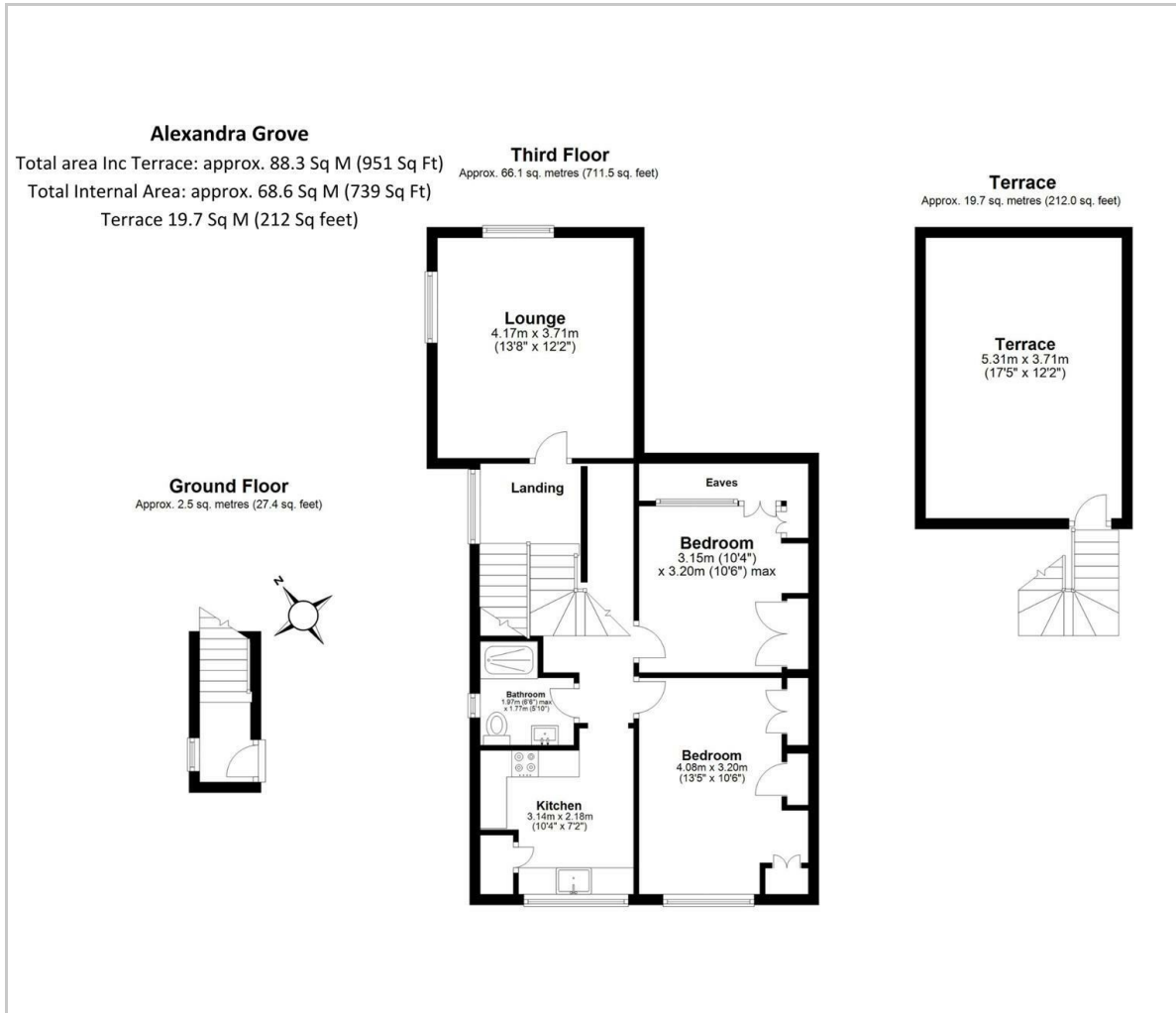
A delightful two double bedroom top floor flat with large private roof terrace located in this peaceful and popular street with excellent transport, parks and amenities all close by.

Main Description





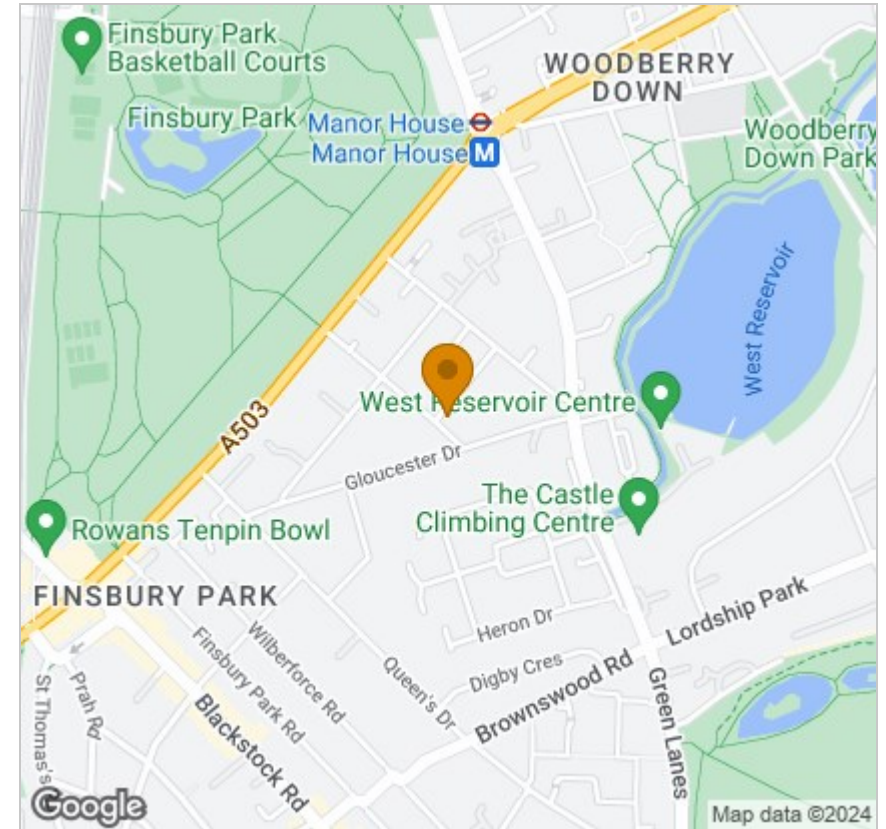
Floor Plan



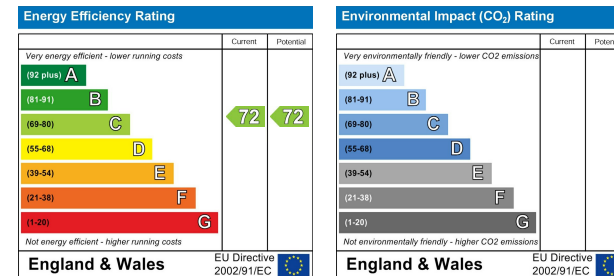
Viewing

Please contact our James Edward Office on 020 7952 5197 if you wish to arrange a viewing appointment for this property or require further information.

Area Map



Energy Efficiency Graph



These particulars, whilst believed to be accurate are set out as a general outline only for guidance and do not constitute any part of an offer or contract. Intending purchasers should not rely on them as statements of representation of fact, but must satisfy themselves by inspection or otherwise as to their accuracy. No person in this firm's employment has the authority to make or give any representation or warranty in respect of the property.

100 Highbury Park, London, N5 2XE

Tel: 020 7952 5197 Email: info@jamesedwardproperties.co.uk <https://www.jamesedwardproperties.co.uk>